

GENERAL DESCRIPTION

The DS33Z44 design kit is an easy-to-use evaluation board for the DS33Z44 Ethernet transport-over-serial link device. The DS33Z44DK is intended to be used with a resource card for the serial link. The serial link resource cards are complete with transceivers, transformers, and network connections. Dallas' ChipView software is provided with the design kit, giving point-and-click access to configuration and status registers from a Windows®-based PC. On-board LEDs indicate receive loss-of-signal, queue overflow, Ethernet link, Tx/Rx, and interrupt status.

Windows is a registered trademark of Microsoft Corp.

ORDERING INFORMATION

PART	DESCRIPTION
DS33Z44DK	DS33Z44 demo card, T3/E3, T1/E1 transceiver resource card included

FEATURES

- Demonstrates Key Functions of DS33Z44 Ethernet Transport Chipset
- Includes Two Resource Cards: One with DS21458 T1/E1 SCT and one with DS3174 T3/E3 SCT, Transformers, BNC and RJ48 Network Connectors, and Termination
- Provides Support for Hardware and Software Modes
- On-Board MMC2107 Processor and ChipView Software Provide Point-and-Click Access to the DS33Z44 Register Set
- All DS33Z44 Interface Pins are Easily Accessible for External Data Source/Sink
- LEDs for Loss-of-Signal, Queue Overflow, Ethernet Link, Tx/Rx, and Interrupt Status
- Easy-to-Read Silkscreen Labels Identify the Signals Associated with All Connectors, Jumpers, and LEDs

DESIGN KIT CONTENTS

- DS33Z44DK Main Board
- Quad-Port Serial Card with DS21458 T1/E1 SCT
- Quad-Port Serial Card with DS3174 T3/E3 SCT
- CD_ROM
 - ChipView Software and Manual
 - DS33Z44DK Data Sheet
 - Configuration Files

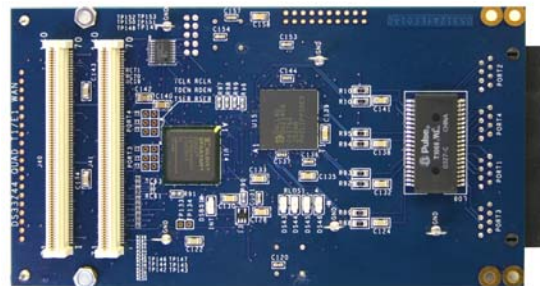
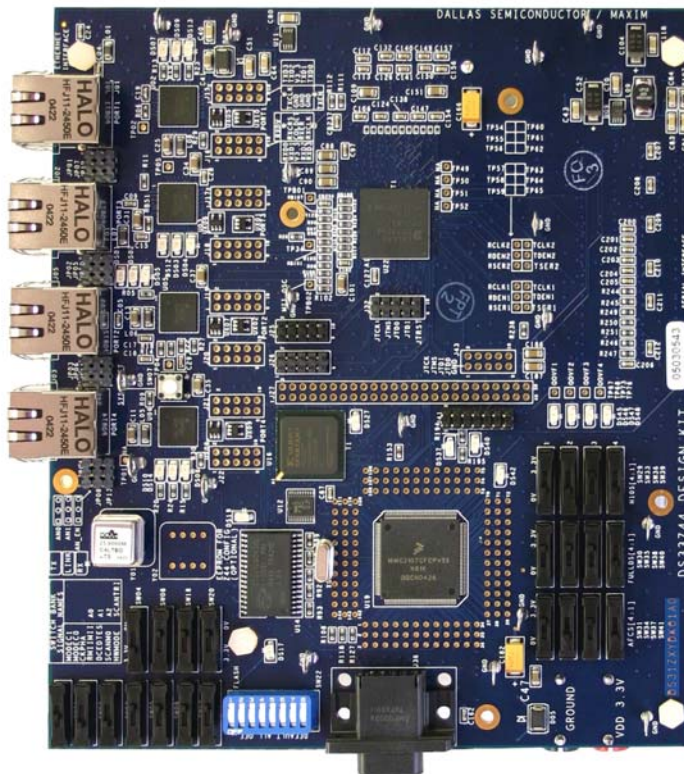


TABLE OF CONTENTS

GENERAL DESCRIPTION	1
ORDERING INFORMATION	1
DESIGN KIT CONTENTS	1
COMPONENT LIST	3
PC BOARD ERRATA	10
FILE LOCATIONS	10
BASIC OPERATION	11
POWERING UP THE DESIGN KIT	11
<i>General</i>	11
BASIC DS33Z44 INITIALIZATION (USED FOR ALL QUICK SETUPS)	11
<i>Quick Setup #1 (Device Driver + CPLD Loopback)</i>	11
<i>Quick Setup #2 (DS3174 T3E3)</i>	12
<i>Quick Setup #3 (DS21458 T1E1)</i>	12
CONFIGURATION SWITCHES AND JUMPERS	13
ADDRESS MAP (ALL CARDS)	15
DS33Z44 INFORMATION	15
DS33Z44DK INFORMATION	15
TECHNICAL SUPPORT	15
DOCUMENT REVISION HISTORY	15
SCHEMATICS	16

LIST OF FIGURES

Figure 1. System Floorplan	8
Figure 2. DS3174 Resource Card Floorplan	8
Figure 3. DS21458 Resource Card Floorplan	9

LIST OF TABLES

Table 1. Component List (Decoupling Caps Not Shown)	3
Table 2. Main Board PC Board Configuration	13
Table 3. DS3174 Serial Reference Card Jumper Settings	14
Table 4. Overview of Daughter Card Address Map	15

COMPONENT LIST

[Table 1](#) shows the component list for the DS33Z44 and DS33Z11/DS33Z41 design kits and resource cards. This BOM contains the part listing for five boards. These boards are the DS33Z11DK, DS33Z44DK, DS21458RC, DS3174RC, and DS2155-DS21348-DS3170RC. Each reference designator is only used once. For example, U18 only appears on the DS33Z11DK and is not used on any of the other boards. See [Table 2](#).

Table 1. Component List (Decoupling Caps Not Shown)

DESIGNATION	QTY	DESCRIPTION	SUPPLIER	PART
U18	1	ELITE 10/100 ETHERNET TRANSPORT OVER SERIAL LINK 14X14 CSBGA 169 PIN	Dallas Semiconductor	DS33Z11
U20	1	3.3V T1.E1.J1 QUAD TRANSCEIVER 0-70C 256P BGA	Dallas Semiconductor	DS21458
U22	1	QUAD 10/100 ETHERNET EXTENSION TO WAN 17X17 PBGA 256 PIN	Dallas Semiconductor	DS33Z44
U23	1	DS3/E3 SCT, 11X11 CSBGA, 100 PIN	Dallas Semiconductor	DS3170
U24	1	T1/E1/J1 XCVR 100P QFP 0-70C	Dallas Semiconductor	DS2156L
U25	1	3.3V LIU	Dallas Semiconductor	DS21348
UB08	1	QUAD TRIPLE DUAL SINGLE ATM PACKET PHYS FOR DS3 E3 STS1 0-70C 400P BGA	Dallas Semiconductor	DS3184
U01, U09	2	SOIC 8PIN STEP-UP DC-DC CONVERTER 0.5A LIMIT	Maxim	MAX1675EUA
U07, U11	2	8-Pin μ MAX/SOIC 1.8V or Adj	Maxim	MAX1792EUA18
U13, UB01	2	MICROPROCESSOR VOLTAGE MONITOR, 2.93V RESET, 4PIN SOT143	Maxim	MAX811SEUS-T
U21, UB07	2	Dual RS-232 transceivers with 3.3V/5V internal capacitors	MAXIM	NA
U31, UB06, UB11	3	8-Pin μ MAX/SOIC 2.5V or Adj	Maxim	MAX1792EUA25
C11, C13, C16, C25, C27, C31–C35, C37, C41, C47, CB10, CB63, CB114, CB128, CB164, CB496	19	1206 CERAM 10uF 10V 20%	Panasonic	ECJ-3YB1A106M
CB390, CB391, CB395, CB396	4	1206 CERAM 0.1uF 25V 10%	Panasonic	ECJ-3VB1E104K
D01–D03, D05, DB03–DB05	7	SCHOTTKY DIODE, 1 AMP 40 VOLT	International Rectifier	10BQ040
DS01, DS07, DS10–DS12, DS17, DS20	7	LED, AMBER, SMD	Panasonic	LN1451C
DS02, DS03, DS09, DS14, DS15	5	L_LED, GREEN, SMD	Panasonic	LN1351C
DS04–DS06, DS08, DS13, DS16, DS18, DS27, DS28, DS35, DS37, DS38, DS40	13	LED, RED, SMD	Panasonic	LN1251C
DS19, DS43	2	LED, GREEN, SMD	Panasonic	LN1351C
DS21–DS26, DS30, DS32–DS34, DS36, DS39, DS41, DS42, DS44–DS48	19	L_LED, RED, SMD	Panasonic	LN1251C
GND_TP01–GND_TP07, GND_TP09–GND_TP44, GND_TP46–GND_TP68, GND_TPB01–GND_TPB10	76	STANDARD GROUND CLIP	KEYSTONE	4954
H1–H8, H17–H19	8	KIT, 4-40 HARDWARE, .50 NYLON STANDOFF AND NYLON HEX-NUT	NA	Lab Stock

DESIGNATION	QTY	DESCRIPTION	SUPPLIER	PART
H9-H16	16	KIT, 4-40 HARDWARE, 1.12 NYLON STANDOFF AND NYLON HEX-NUT (1.12 STANDOFF PN = 4807K-ND)	NA	Lab Stock
J01-J05	5	CONNECTOR, FASTJACK SINGLE, 8 PIN	Halo Electronics	HFJ11-2450E
J06, J41	2	100 MIL 2*7 POS JUMPER	NA	Lab Stock
J07-J12	6	RECEPTACLE, SMD, 140 PIN, .8MM, 2 ROW VERTICAL	AMP	5-179010-6
J13-J22	10	L_TERMINAL STRIP, 10 PIN, DUAL ROW, VERT DO NOT POPLUATE	NA	Lab Stock
J23, J29, J32, J38, J39, J43, J44, J47, JB07	9	L_TERMINAL STRIP, SHROUDED, 10 PIN, DUAL ROW, VERT	3M Electronics	2510-6002UB
J24, J30, J31, J33	4	100 MIL 2 POS JUMPER	NA	Lab Stock
J25, J26, J45, J46	4	TERMINAL STRIP, 10 PIN, DUAL ROW, VERT	NA	Lab Stock
J27, J42	2	CONN 50 PIN, 2 ROW, POSTS VERT, MOTHERBOARD FOOTPRINT	SAMTEC	TSW-125-07-T-D
J28, J36	2	L_CONN, DB9 RA, LONG CASE	AMP	747459-1
J48, J54, JB01	3	SOCKET, BANANA PLUG, HORIZONTAL, BLACK	Mouser Electronics	164-6218
J49-J52	4	CONNECTOR BNC 75 OHM VERTICAL 5PIN	Cambridge	CP-BNCP-004
J53, JB02, JB08	3	SOCKET, BANANA PLUG, HORIZONTAL, RED	Mouser Electronics	164-6219
J55, JB11	2	L_RJ48 8 PIN SINGLE PORT CONNECTOR	MOLEX	15-43-8588
J56-J59, J61, J63	6	CONNECTOR BNC 75 OHM RA 5PIN	Trompetor	UCBJR220
J60, J62, J64, J65	4	CONNECTOR BNC RA 5PIN	Trompetor	UCBJR220
JB05, JB06, JB09, JB10, JB13, JB14	6	PLUG, SMD, 140 PIN, .8MM, 2 ROW VERTICAL	AMP	179031-6
JB12	1	RA RJ45 8PIN 4PORT JACK	MOL	43223-8140
JP01-JP19	19	100 MIL 3 POS JUMPER	NA	NA
L01, L03-L08, LB01, LB02	9	FERRITE 3A 100 OHM AT 100 MHZ 1206 SMD	Steward	HI1206N101R-00
L02, L09	2	INDUCTOR 22.0uH 2PIN SMT 20%	Coiltronics	UP1B-220
L10	1	XFMR 1-2CT XMIT, 1-1CT RCV, 40P WIDE SOIC	Pulse	T1068
R01, R02, RB10, RB11, RB18, RB19, RB22, RB23, RB26, RB27	10	RES 0603 54.9 Ohm 1/16W 1%	Panasonic	ERJ-3EKF54R9V
R03, R04, RB12, RB13, RB20, RB21, RB24, RB25, RB28, RB29	10	RES 0603 49.9 Ohm 1/16W 1%	Panasonic	ERJ-3EKF49R9V
R05, R06, R08, R09, R11	5	RES 0603 10.0K Ohm 1/16W 1% - Must be 1% tolerance	Panasonic	ERJ-3EKF1002V
R07, R12, R16, R79, R160, R244, R248, R250, R251, R254, R255, RB126, RB143, RB147, RB150, RB157	16	RES 0603 1.0K Ohm 1/16W 5%	Panasonic	ERJ-3GEYJ102V
R10, R107	2	RES 1206 5.6 Ohm 1/8W 5%	Panasonic	ERJ-8GEYJ5R6V
R132, R137, R142, R144, R156, RB194, RB208, RB227	8	L_RES 0603 0 Ohm 1/16W 1%	AVX	CJ10-000F

DESIGNATION	QTY	DESCRIPTION	SUPPLIER	PART
R13–R15, R18–R20, R22, R23, R29, R30, RB01, RB03, RB07, RB09, RB15–RB17, RB30–RB32, RB34–RB38, RB41, RB44, RB47, RB48, RB50–RB52, B55, RB60, RB62, RB72, RB73, RB75, RB80, RB82	40	RES 0603 5.1K Ohm 1/16W 5%	Panasonic	ERJ-3GEYJ512V
R17, R21, R25–R28, R31, R55, R57–R59, R71, R74–R76, R83, R96–R102, R105, R106, R109, R111, R112, R115–R117, R120, R122–R126, R128, R133, R134, R140, R141, RB61, RB96, RB97, RB99, RB100, RB102–RB110, RB112, RB114–RB119, RB121, RB123–RB125, RB127, RB128, RB130, RB131, RB133, RB135–RB138, RB145, RB148, RB149, RB160, RB161, RB164, RB165, RB167–RB171, RB173–RB181, RB184, RB187, RB311, RB320, RB335, RB339, RB359	104	RES 0603 30 Ohm 1/16W	Panasonic	ERJ-3GEYJ300V
R171, R172, R174, R175, R190, R191, R240, R241	8	L_RES 0805 0.0 Ohm 1/10W 5%	Panasonic	ERJ-6GEY0R00V
R198–R200, R210–R213, RB306, RB325, RB326	10	RES 0603 332 Ohm 1/16W 1%	Panasonic	ERJ-3EKF3320V
R201–R208, RB321–RB324, RB327–RB330	16	RES 1206 0 Ohm 1/8W 5%	Panasonic	ERJ-8GEYJ0R00V
R239, RB349	2	RES 0805 51.1 Ohm 1/10W 1%	Panasonic	ERJ-6ENF51R1V
R24, R114, R197, RB14, RB33, RB40, RB42, RB43, RB49, RB53, RB54, RB57–RB59, RB71, RB77, RB78, RB152–RB156, RB221, RB234, RB251, RB284, RB304, RB331, RB332, RB342, RB344, RB350, RB354, RB360	34	L_RES 0603 330 Ohm 1/16W 5%	Panasonic	ERJ-3GEYJ331V
R242, R243, RB144, RB166, RB355–RB358, RB368–RB371	12	RES 0603 51 Ohm 1/16W 5%	Panasonic	ERJ-3GEYJ510V
R32, R70, R78, R161, R176, R194, R195, R237, R238, RB129, RB134, RB146, RB193	13	RES 0603 330 Ohm 1/16W 5%	Panasonic	ERJ-3GEYJ331V
R33–R54, R60–R69, R72, R73, R131, R136, R143, R147, R150, R154, R158, R163, R166, R169, R173, R178–R189, R215–R228, RB89–RB95, RB101, RB188–RB191, RB196–RB199, RB202–RB205, RB210–RB213, RB216–RB219, RB223–RB226, RB230–RB233, RB239–RB242, RB244–RB249, RB252–RB260, RB265–RB268, RB270–RB282, RB289–RB297	152	RES 0402 30 Ohm 1/16W 5%	Panasonic	ERJ-2GEJ300X
R56, R90	2	RES 0603 1.0M Ohm 1/16W 5%	Panasonic	ERJ-3GEYJ105V
R77, RB159	2	L_RES 1206 0 Ohm 1/8W 5%	Panasonic	ERJ-8GEYJ0R00V
R80, R81, R84, R87, R89, R91–R93, R95, R108, R110, R118, R127, R152, R153, R196, R209, R214, R229–R236, RB200, RB237, RB238, RB263, RB264, RB286, RB287, RB300, RB301, RB333, RB364	37	RES 0603 10K Ohm 1/16W 5%	Panasonic	ERJ-3GEYJ103V

DESIGNATION	QTY	DESCRIPTION	SUPPLIER	PART
R85, R88, R94, R104, R113, RB02, RB04-RB06, RB08, RB39, RB45, RB46, RB56, RB63-RB70, RB76, RB83, RB98, RB183, RB185, RB192, RB209, RB228, RB302, RB303, RB305, RB338, RB340, RB341, RB346-RB348, RB351-RB353, RB361-RB363, RB365-RB367	48	RES 0603 2.0K Ohm 1/16W 5%	Panasonic	ERJ-3GEYJ202V
R86, R103, R119, R121, R129, R130, R135, R138, R139, R145, R146, R149, R151, R157, R162, R164, R167, R168, R170, R177, R192, R193, R245-R247, R249, R252, R253, R256, R257, RB74, RB79, RB132, RB139-RB141, RB151, RB162, RB163, RB172, RB182, RB186, RB206, RB207, RB214, RB215, RB220, RB222, RB229, RB235, RB236, RB243, RB250, RB261, RB262, RB269, RB308-RB310, RB343, RB345	61	L_RES 0603 10K Ohm 1/16W 5%	Panasonic	ERJ-3GEYJ103V
RB201, RB285	2	RES 0805 330 Ohm 1/10W 5%	Panasonic	ERJ-6GEYJ331V
RB283	1	RES 0603 10K Ohm 1/10W 5% - SEE SPECIAL INSTRUCTIONS	Panasonic	603_ERJ-3GEYJ103V
RB298, RB299, RB312-RB319, RB336, RB337	12	RES 0805 61.9 Ohm 1/10W 1%	Panasonic	ERJ-6ENF61R9V
RB81, RB84-RB88, RB111, RB113, RB120, RB122	10	RES 0603 DO NOT POPULATE	NA	NA
SW01-SW05, SW08-SW21, SW24-SW26, SW29-SW31, SW33-SW44	37	L_SWITCH, SP3T SLIDE, 4PIN TH	Tyco	3-1437575-3
SW06, SW22	2	L_SWITH 8POS 16PIN DIP LOW PROFILE	AMP	435668-7
SW07, SW23	2	SWITCH MOM 4PIN SINGLE POLE	Panasonic	EVQPAE04M
SW27, SW28, SW32	3	L_DIPSWITCH, 10 POS	AMP	435668-9
T01, T03	2	XFMR 16P SMT	Pulse	TX1099
T02, TB01	2	XFMR, OCTAL T3/E3, 1 TO 2, SMT 32 PIN	Pulse	T3049
TP01-TP78, TPB01, TPB02	80	TESTPOINT, 1 PLATED HOLE, DO NOT STUFF	NA	NA
U02-U06	5	IC, DsPHYTER11-SINGLE 10/100 ETHERNET TRANSCEIVER, 65 PIN LLP	National Semiconductor	DP83847ALQA5 6A
U08, U12, U29	3	1MBit Flash based config mem	Avnet	XCF01SV020C
U10	1	XILINX SPARTAN xc200 2.5V FPGA,256 PIN BGA	Xilinx	XC2S200-5FG256C
U14, U26, U30, UB05	4	CYPRESS SRAM, LAB STOCK	NA	NA
U15, U19	2	mmc2107 processor	Motorola	MMC2107
U16, U27	2	XILINX SPARTAN 2.5V FPGA,256 PIN BGA	Xilinx	XC2S50-5FG256C
U17, U28, U32	3	10 pin res pack, 10K ohm	NA	NA
UB02, UB03, UB04	3	100 PIN CPLD	XILINX	XC95144XL-10TQ100C
UB09, UB10	2	SYNCHRONOUS DRAM, 1MEGX32X4 BANKS, TSOP 86 PIN	Micron	MT48LC4M32B2 TG-7

DESIGNATION	QTY	DESCRIPTION	SUPPLIER	PART
UX01-UX12, UXB02-UXB04, UXB06-UXB08	18	HIGH SPEED BUFFER	Fairchild	NC7SZ86
UXB01, UXB05	2	HIGH SPEED INVERTER	Fairchild	NC7SZ86
X01, X02	2	XTAL LOW PROFILE 8.0MHZ	ECL	EC1-8.000M
Y01, Y09	2	OSCILLATOR, CRYSTAL CLOCK, 3.3V - 25.000 MHZ, Low Jitter required for PHY	SaRonix	NTH089AA3- 25.000
Y02, Y13	2	SPI SERIAL EEPROM 16K 8 PIN DIP 2.7V NEEDS SOCKET	Atmel	AT25160A-10PI- 2.7
Y03	1	OSCILLATOR, CRYSTAL CLOCK, 3.3V - 2.048 MHZ	SaRonix	NTH039A3- 2.0480
Y05, Y06	2	OSCILLATOR, CRYSTAL CLOCK, 3.3V - 100.000 MHZ	SaRonix	NTH089A3- 100.0000
Y07	1	OSCILLATOR, CRYSTAL CLOCK, 3.3V - 44.736 MHZ	SaRonix	NTH089AA3- 44.736
Y08	1	OSCILLATOR, CRYSTAL CLOCK, 5.0V - 44.736 MHZ	SaRonix	NTH089AA- 44.736
YB02	1	L_OSCILLATOR, CRYSTAL CLOCK, 3.3V - 2.048 MHZ	SaRonix	NTH039A3- 2.0480

Figure 1. System Floorplan

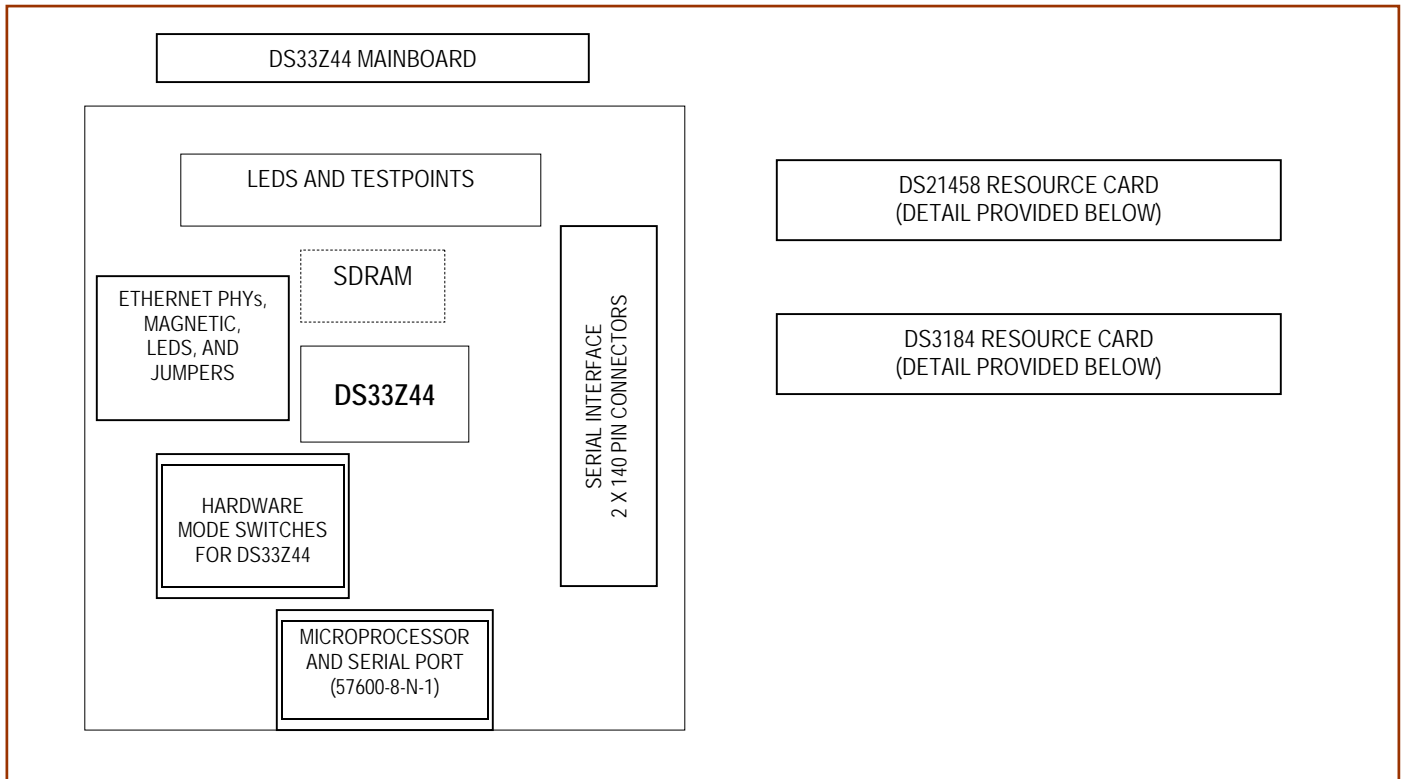
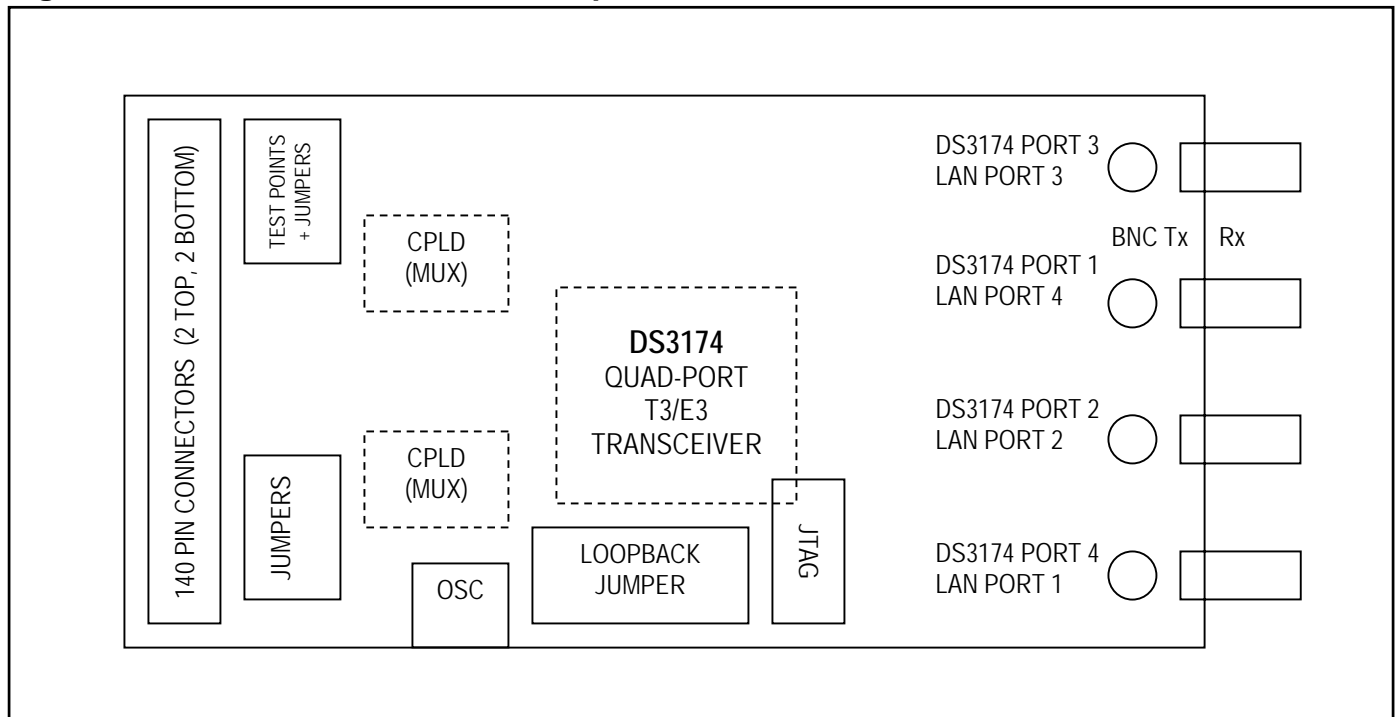


Figure 2. DS3174 Resource Card Floorplan



The DS3174 quad T3/E3 PC board floorplan is shown in [Figure 2](#). Jumpers JP16, JP17, JP18, and JP19 are 3-pin jumpers used to tri-state/enable T3/E3 ports. With the board oriented as shown in Figure 2, the top 2 pins of each jumper would be connected to enable T3/E3 traffic.

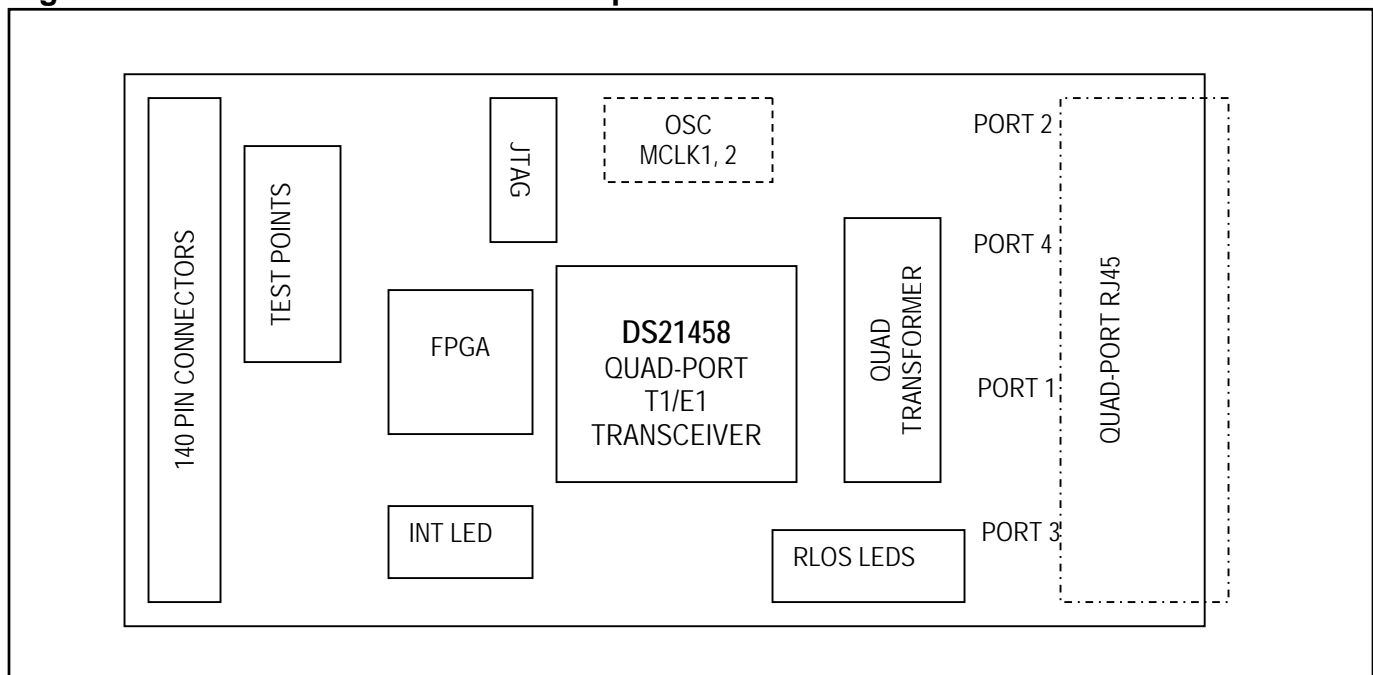
A 2-pin jumper, JP24, has been added to allow loopback. When installed, the board is in loopback at the CPLD; all traffic sent by the DS33Z44 is then sent back to the Z44. Traffic sent by the DS3174 is ignored in CPLD loopback mode.

The quad T3/E3 board is intended to be connected to the DS33Z11 or DS33Z44 motherboards. The quad T3/E3 board can be used with the quad T1/E1 board. When used in this manner, the quad T1/E1 board is stacked underneath the quad T3/E3 board. Jumpers on the T3/E3 board are then used to tri-state or enable individual ports on either board.

[Figure 3](#) shows the DS21458 quad T1/E1 PC board floorplan. The current configuration is to populate oscillators for MCLK1 with a 2.048MHz oscillator. Testpoints for port 3 and port 4 are provided on the WAN card, and testpoints for ports 1 and 2 are provided on the motherboard.

The quad T1/E1 board can be used with the quad T3/E3 board. When used in this manner, the quad T1/E1 board is stacked underneath the quad T3/E3 board. Jumpers on the T3/E3 board are then used to tri-state or enable individual ports on either board.

Figure 3. DS21458 Resource Card Floorplan



PC BOARD ERRATA

- Silk screen for the serial resource card has V_{CC} and ground indicators pointing the wrong direction for configuration switches SW27, SW28, and SW32. This should be corrected with an adhesive label.
- Signal descriptions for JTAG connector are incorrect on the Quad T1E1 card. This should be corrected with an adhesive label.
- In the PCB layout the transformer TX primary is on the wrong side (creating a 2:1 winding instead of a 1:2). This has been corrected in the schematic, the PCB / assembly has been modified to correct this.

FILE LOCATIONS

This design kit relies upon several supporting files, which are provided on the CD and are available as a zip file from the Maxim website at www.maxim-ic.com/DS33Z44DK.

All locations are given relative to the top directory of the CD/zip file.

- DS33Z44 register definition files and configuration files:
 - `.\cfg_demo_gui\DS33Z44_cfg_demo_gui\DS33Z44.def`
 - `.\DS33Z44_cfg_demo_gui\SU_LI_PORT4.def` (def files for port 3, 2, 1 not shown)
 - `.\DS33Z44_cfg_demo_gui\basic_config.mfg`
- DS21458 register definition files and configuration files:
 - `.\DS33Z44_cfg_demo_gui\Qt1e1_DS21458\DS21458RC.def`
 - `.\DS33Z44_cfg_demo_gui\Qt1e1_DS21458\DS21458RC_FPGA.def`
 - `.\DS33Z44_cfg_demo_gui\Qt1e1_DS21458\e1_gapclk_crc4_hdb3_nocas.ini`
 - `.\DS33Z44_cfg_demo_gui\Qt1e1_DS21458\gapclk_DS21458_T1_ESF_LBO0.ini`
- DS3174 register definition files and configuration files:
 - `.\DS33Z44_cfg_demo_gui\Qt3e3_DS3184\ds3184_evbrd_reduced.def`
 - 14 other low level def files
 - `.\DS33Z44_cfg_demo_gui\Qt3e3_DS3184\84_t3_sct_needscoaxlb.mfg`

BASIC OPERATION

Powering Up the Design Kit

- Attach resource card to main board.
- Connect PCB 3.3V and GND banana plugs to power supply. At power-up the system should draw approximately 1A.
- Set switches for software mode as described in [Table 2](#) (short description follows).
 - Top left bank: All low, except for MODEC0, which is high.
 - Top right bank: A2, A1, A0 in mid position, SCANTRI low
 - Bottom Bank: All high (AFCS, FULLDS, H1OS)

General

- Upon power-up, the processor FPGA Status LEDs (DS19 green) will be lit. Interrupt LEDs (DS42 red) will not be lit. DS33Z44 Queue overflow LEDs (DS45, DS46, DS47, DS48 red) will not be lit. PHY LINK LED (DS02, DS03, DS14 green) should be lit if the Ethernet is connected.

Following are several basic system initializations.

Basic DS33Z44 Initialization (Used for All Quick Setups)

This section covers four basic methods for configuring the Z44. Any one of these initializations can be used with the following Quick Setup examples:

1. Upon power-up, the on-board device driver provides a basic configuration for the DS33Z44 and attached serial cards. This enables traffic to pass from the Ethernet port to the serial port. Consult the device driver documentation for further details. Device driver behavior is dependant upon jumper settings, which are detailed in Table 2.
2. Register-Based Configuration. Launch ChipView.exe and select *Register View*. When prompted for a definition file, pick the file named **DS33Z44.def**. After the definition file loads, go to the File menu and select *File*→*Memory Config File*→*Load .MFG file*. When prompted, select the file named **4Portsbasic_config.mfg**.
3. Hardware Mode. Set switches as described in the section for powering up the design kit, then change the following: HWMODE←3.3V, A0←3.3VV, A1←3.3V, A2←0V. This sets the part for LSB first, scrambling off, HDLC encapsulated. At this point traffic will pass from the Ethernet port to the serial port. In this mode broadcast frames are not passed (i.e., ping).
4. EEPROM mode is available with the DK, but is beyond the scope of this manual.

Quick Setup #1 (Device Driver + CPLD Loopback)

- On the serial resource card install jumper 24. Jumpers JP16–JP19 should be set high. This places the card in CPLD loopback and enables all four ports as described in [Table 3](#).
- Complete the hardware configuration and one of the basic DS33Z44 configurations as described in the previous section.
- Using a patch cable, connect the Ethernet connector to an ordinary PC, or network test equipment. This should cause the link LED to turn on.
- At this point any packets sent to the DS33Z44 are echoed back. Incoming packets (i.e., ping) should cause the RX LED to blink, after which the TX LED should also blink.
- To interact with the device driver select from the drop down menu:
 - Tools→Plugins→Load Plugins. When asked if DLLs have already registered select yes
 - Select Tools→Plugins→DS33Z44/11/41 Device Driver Demo
 - A new form called 'Zchip Configuration' pops up.
 - Preload basic configuration for the GUI by selecting File→Load Settings (in the 'Zchip Configuration' form). Select the file named 'basic_Config.eset'

Quick Setup #2 (DS3174 T3E3)

- On the DS3174 serial resource card install jumper J24. Jumpers JP16–JP19 should be set high. This places the card in DS3174 mode and enables all four ports as described in [Table 3](#).
- Complete the hardware configuration and one of the basic DS33Z44 configurations as previously described.
- Using a patch cable, connect the Ethernet connector to an ordinary PC, or network test equipment. This should cause the link LED to turn on.
- Launch ChipView.exe (or use existing session if it is already open) and select *Register View*. When prompted for a definition file, pick the file name **ds3184_evbrd_reduced.def**. After the definition file loads, go to the File menu and select *File→Memory Config File→Load .MFG file*. When prompted, select the file named **84_t3_sct_needscoaxlb.mfg**.
- Place a loopback connector at the DS3174 network side.
- At this point, any packets sent to the DS33Z44 are echoed back. Incoming packets (i.e., ping) should cause the RX LED to blink, after which the TX LED should also blink.

Quick Setup #3 (DS21458 T1E1)

- Complete the hardware configuration and one of the basic DS33Z44 configurations as previously described.
- Using a patch cable, connect the Ethernet connector to an ordinary PC, or network test equipment. This should cause the link LED to turn on.
- Launch ChipView.exe (or use existing session if it is already open) and select *Register View*. When prompted for a definition file, pick the file named **DS21458.def**. After the definition file loads, go to the File menu and select *File→Reg Ini File→Load Ini File*. When prompted, pick the file named **e1_gapclk_crc4_hdb3_nocas.ini**.
- Place a loopback connector at the DS21458 network side; RLOS LED should go out.
- At this point any packets sent to the DS33Z44 are echoed back. Incoming packets (i.e. ping) should cause the RX LED to blink, after which the TX LED should also blink.

CONFIGURATION SWITCHES AND JUMPERS

The DS33Z44DK has several configuration switches, banana plugs, oscillators, and jumpers. [Table 2](#) provides a description of these signals, given in order of appearance on the PC board (going from left to right, top to bottom).

Table 2. Main Board PC Board Configuration

SILKSCREEN REFERENCE	FUNCTION	BASIC SETTING		DESCRIPTION
		SW MODE	HW MODE	
J25.9 + J25.10	Reserved	Not Installed	—	This jumper is not for use with the DS33Z44 design kit. Pin J25.10 has been removed to prevent accidental installation.
J25.7 + J25.8	Enable device driver	User decision	—	When installed the device driver will configure the DS33Z44 and the Transceiver during power-up.
J25.5 + J25.6	Enable callbacks	User decision	—	When installed the driver will respond to interrupts.
GROUND (banana plug)	Power supply ground	—	—	System Ground. Always connected to power supply.
VDD 3.3V (banana plug)	Power supply VDD	—	—	System VDD. Always connected to power supply.
OnCe	BDM	—	—	Debug connector for processor
DCEDTES (3pos switch)	DS33Z44 mode pin; DTE/DCE selection	Low	Low	Low for DTE
RMII MII (3pos switch)	DS33Z44 mode pin	Low	Low	High for RMII, low for MII
CKPHA (3pos switch)	DS33Z44 mode pin	Low	Low	SPI EEPROM hardware mode configuration switch
MODEC0 (3pos switch)	DS33Z44 mode pin	High	Low	Software mode selected
MODEC1 (3pos switch)	DS33Z44 mode pin	Low	Low	Software mode selected
HWMODE (3pos switch)	DS33Z44 mode pin	Low	Low	Hardware/software mode (software mode selected)
SCANMO (3pos switch)	DS33Z44 mode pin	Low	Low	Set low for normal operation
SCANTRI (3pos switch)	DS33Z44 mode pin	Low	Low	Set low for normal operation
...testpoints....	DS33Z44 testpoints	—	—	Processor bus, JTAG and LAN side testpoints for Zchip
Z-RESET (button)	DS33Z44 reset	—	—	System reset
A2, A1, A0 (3pos switches)	DS33Z44/SPI pins	Mid position	Mid position	Address pin/EEPROM config switch. Set to mid position to allow connection to processor.
SDRAM CLOCK	DS33Z44 SDRAM clock	Installed	Installed	100MHz oscillator to drive SDRAM clock
MII CLOCK	PHY MII clock	Installed	Installed	25MHz oscillator to drive SDRAM clock
spi_cs, spi_ck, spi_miso, spi_mosi	—	—	—	SPI signals (for EEPROM memory)
...testpoints.....	DS33Z44 testpoints	—	—	DS33Z44 serial port testpoints
AFCS (1 per port)	DS33Z44 mode pin	HW mode only	High	Set high to enable auto flow control.

SILKSCREEN REFERENCE	FUNCTION	BASIC SETTING		DESCRIPTION
		SW MODE	HW MODE	
FULLDS (1 per port)	DS33Z44 mode pin	HW mode only	High	Set high to enable full duplex.
H10S (1 per port)	DS33Z44 mode pin	HW mode only	High	Set high to config for 100Mb.
GROUND/VDD (banana plug)	Power supply ground/3.3V	—	—	Redundant connection to system power. Use plugs at either top or bottom of board.
VDD 3.3V (banana plug)	Power supply VDD	—	—	Redundant connection to system power. Use plugs at either top or bottom of board.

Table 3. DS3174 Serial Reference Card Jumper Settings

JUMPER SETTINGS	MODE	COMMENT
JP16	Port 4 tri-state (at CPLD)	When the middle pin of this 3 position jumper is set to VCC, the CPLD passes traffic from the DS3174 to the DS33Z44. When the pin is set low, the CPLD tri-states this port.
JP17	Port 2 tri-state (at CPLD)	When the middle pin of this 3 position jumper is set to VCC, the CPLD passes traffic from the DS3174 to the DS33Z44. When the pin is set low, the CPLD tri-states this port.
JP18	Port 3 tri-state (at CPLD)	When the middle pin of this 3 position jumper is set to VCC, the CPLD passes traffic from the DS3174 to the DS33Z44. When the pin is set low, the CPLD tri-states this port.
JP19	Port 1 tri-state (at CPLD)	When the middle pin of this 3 position jumper is set to VCC, the CPLD passes traffic from the DS3174 to the DS33Z44. When the pin is set low, the CPLD tri-states this port.
J243	CPLD loopback	CPLD loopback makes the following connections: Zrser ← Ztser, Ztden ← 3.3V, Zrden ← 3.3V, Ztclki ← OscY03, Zrclki ← OscY03

ADDRESS MAP (ALL CARDS)

Motorola resource card address space begins at 0x81000000. All offsets given below are relative to the beginning of the daughter card address space (shown previously).

Table 4. Overview of Daughter Card Address Map

OFFSET	DEVICE	DESCRIPTION
0X0000 to 0X0087	FPGA	Processor board identification
0X1000 to 0X1FFF	DS33Z44	DS33Z44. Uses CS_X1.
0X2000 to 0X2FFF	DS21458	T1E1 DS21458 resource card. Uses CS_X2.
0X4000 to 0X4010	FPGA	FPGA on DS21458 resource card. Used to facilitate IBO mode. Default configuration of FPGA is compatible with non-IBO mode functionality. The FPGA settings do not require modification for use with the DS33Z44.
0X3000 to 0X3FFF	DS3174	T3E3 resource card. Uses CS_X3.

Registers in the DS33Z44, DS21458, and DS3174 can be easily modified using the ChipView host-based user-interface software with the definition files previously mentioned.

DS33Z44 INFORMATION

For more information about the DS33Z44, consult the DS33Z44 data sheet available on our website at www.maxim-ic.com/DS33Z44.

DS33Z44DK INFORMATION

For more information about the DS33Z44DK, including software downloads, consult the DS33Z44DK data sheet available on the our website at www.maxim-ic.com/DS33Z44DK.

TECHNICAL SUPPORT

For additional technical support, go to www.maxim-ic.com/support.

DOCUMENT REVISION HISTORY

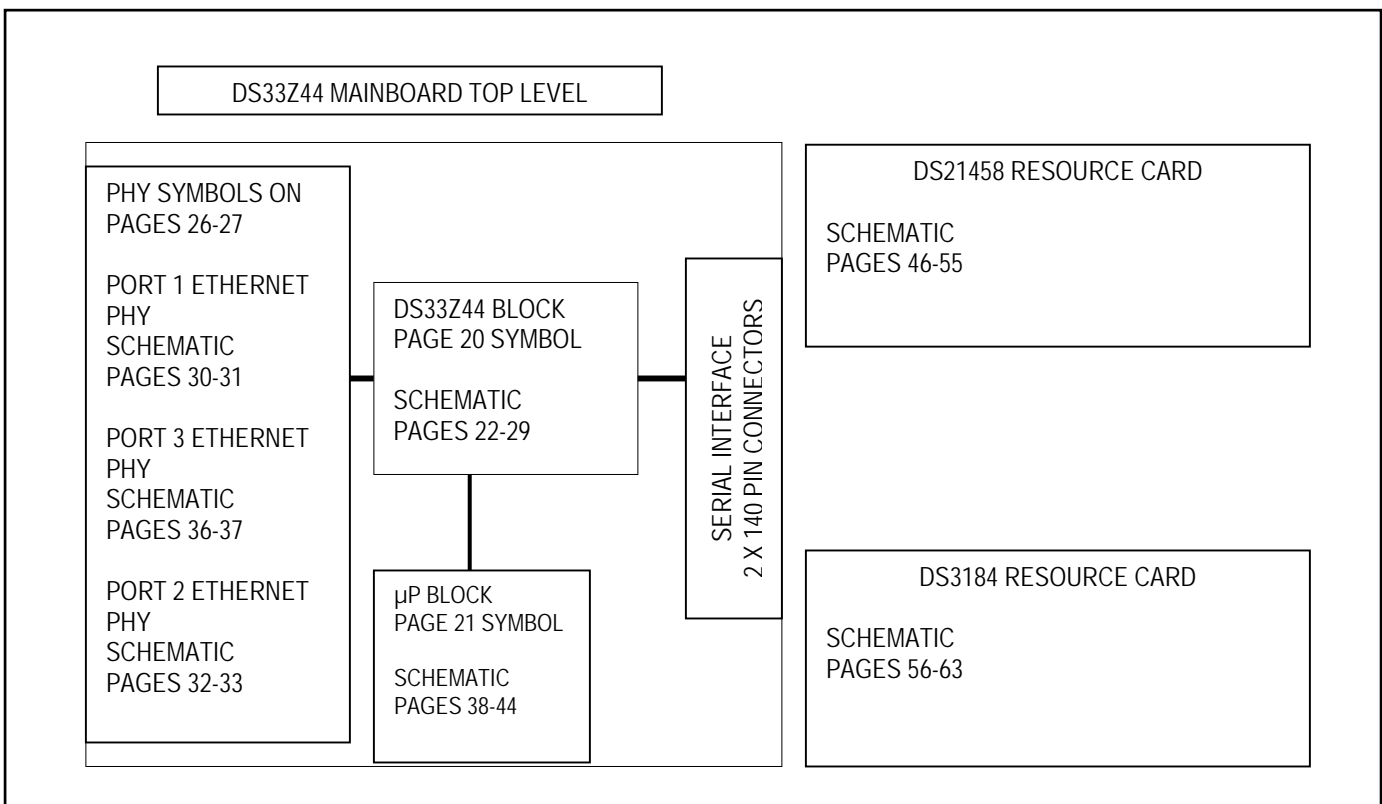
REVISION DATE	DESCRIPTION
032305	Initial DS33Z44DK data sheet release.
042205	Updated <i>Basic DS33Z44 Initialization</i> section; added step to <i>Quick Setup #1</i> .
051105	Added new PC board errata.
110106	Updated schematics.

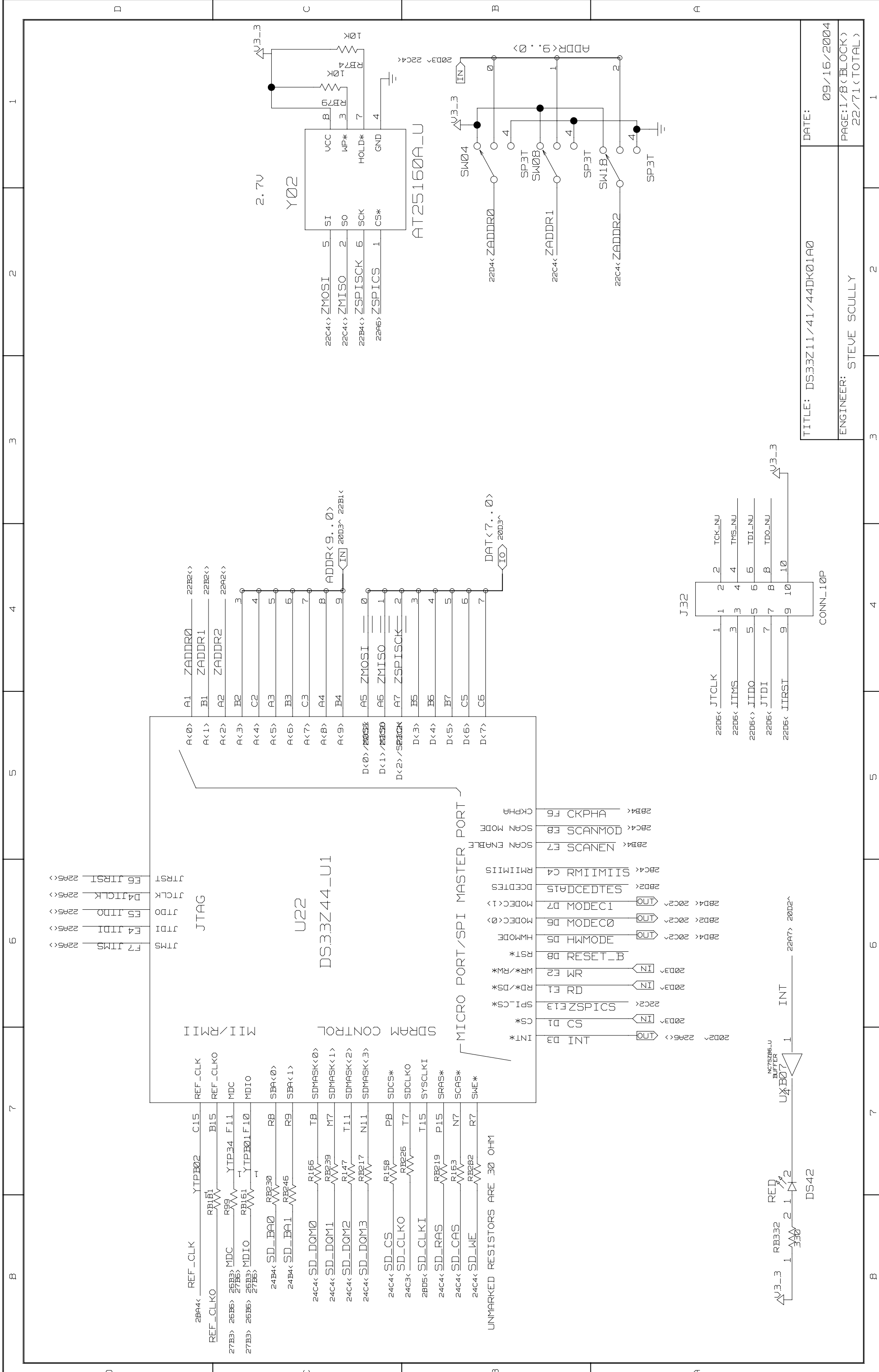
SCHEMATICS

The DS33Z44DK schematics are featured in the following pages. As this is a hierarchal schematic some explanation is in order. The main board is composed of six hierarchal blocks: the processor block, the DS33Z44 block, and four Ethernet blocks inside the DS33Z44 block, which is a nested hierarchy block. Each serial card (DS21458 and DS3174) consists of a single hierarchy block, which connects to a 140-pin AV bus that snaps into the mainboard.

All signals inside a hierarchy block are local, with exception for V_{CC} and ground. In-port and out-port connectors are used to allow signals inside a hierarchy block to become accessible as pins on the hierarchy blocks symbol. From here, blocks are wired together as if they were ordinary components. The system diagram is shown again below, with schematic page numbers given for each functional block.

This system contained other hierarchy blocks that are not shown (primarily a single-port serial card and the DS33Z11 mainboard). Due to this, page numbers will not be continuous and some gaps in numbering will be seen when referring to the total page count. However, page numbers inside any given hierarchy block will be continuous.

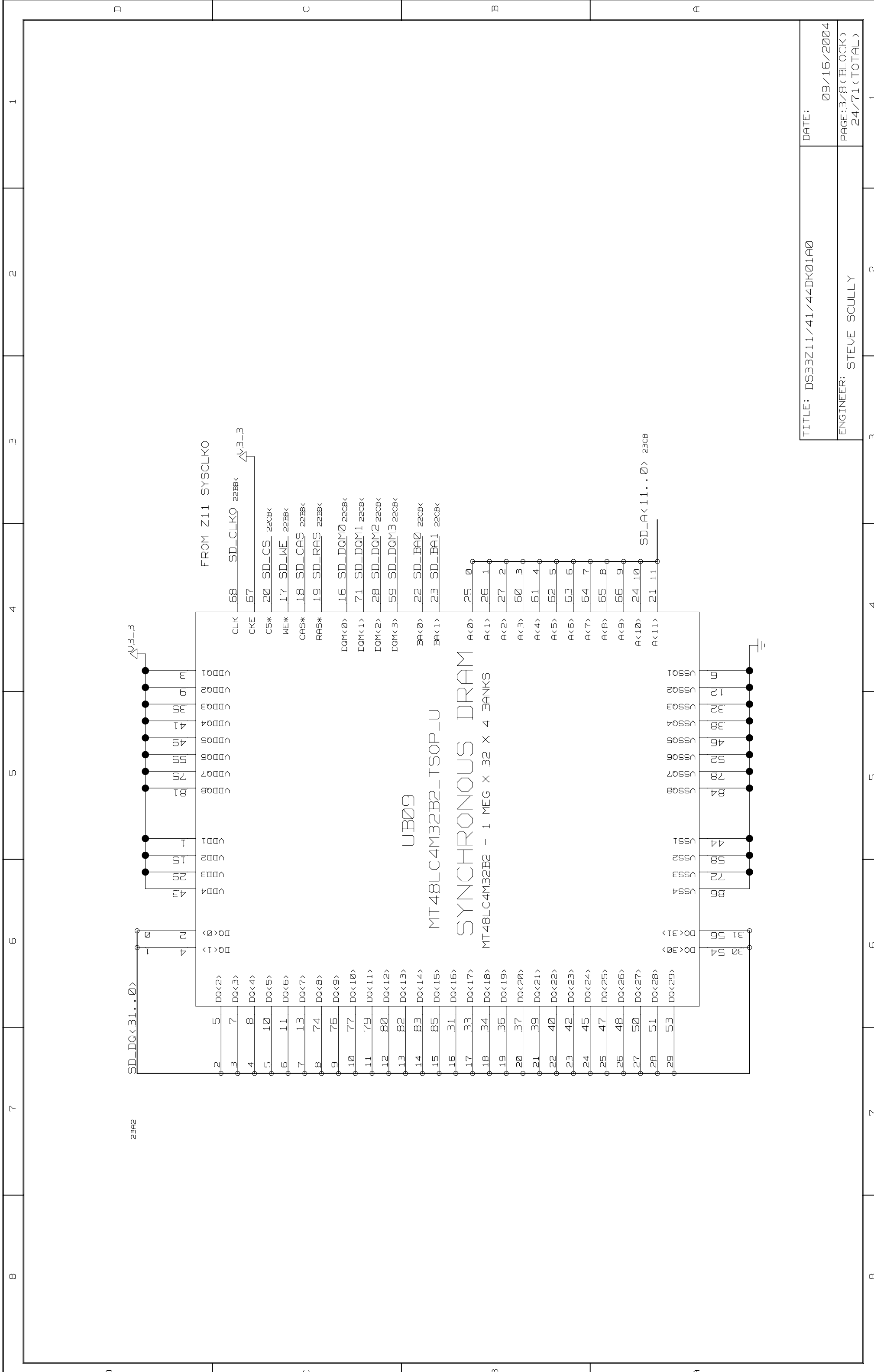


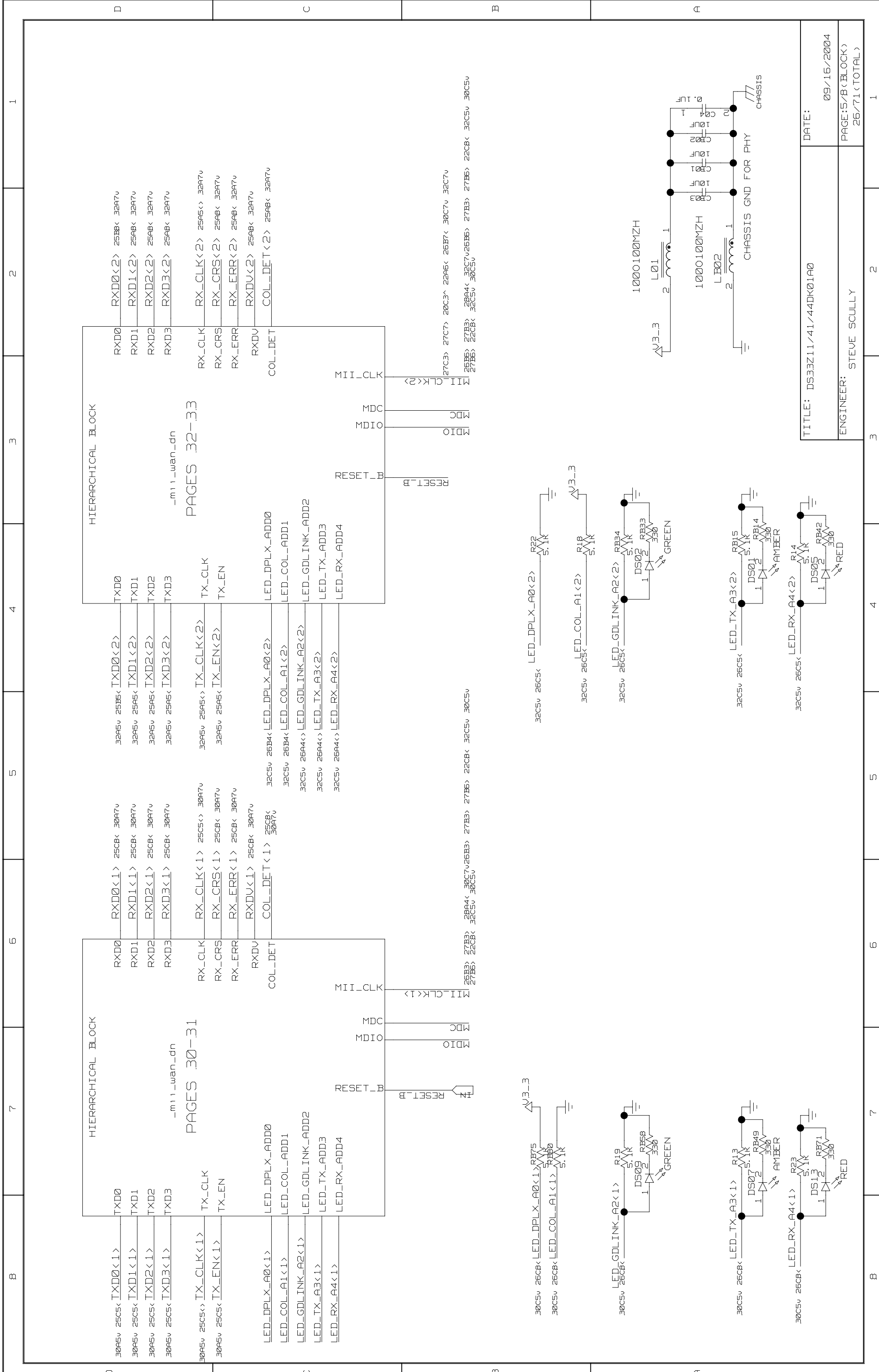


1 2 3 4 5 6 7 B

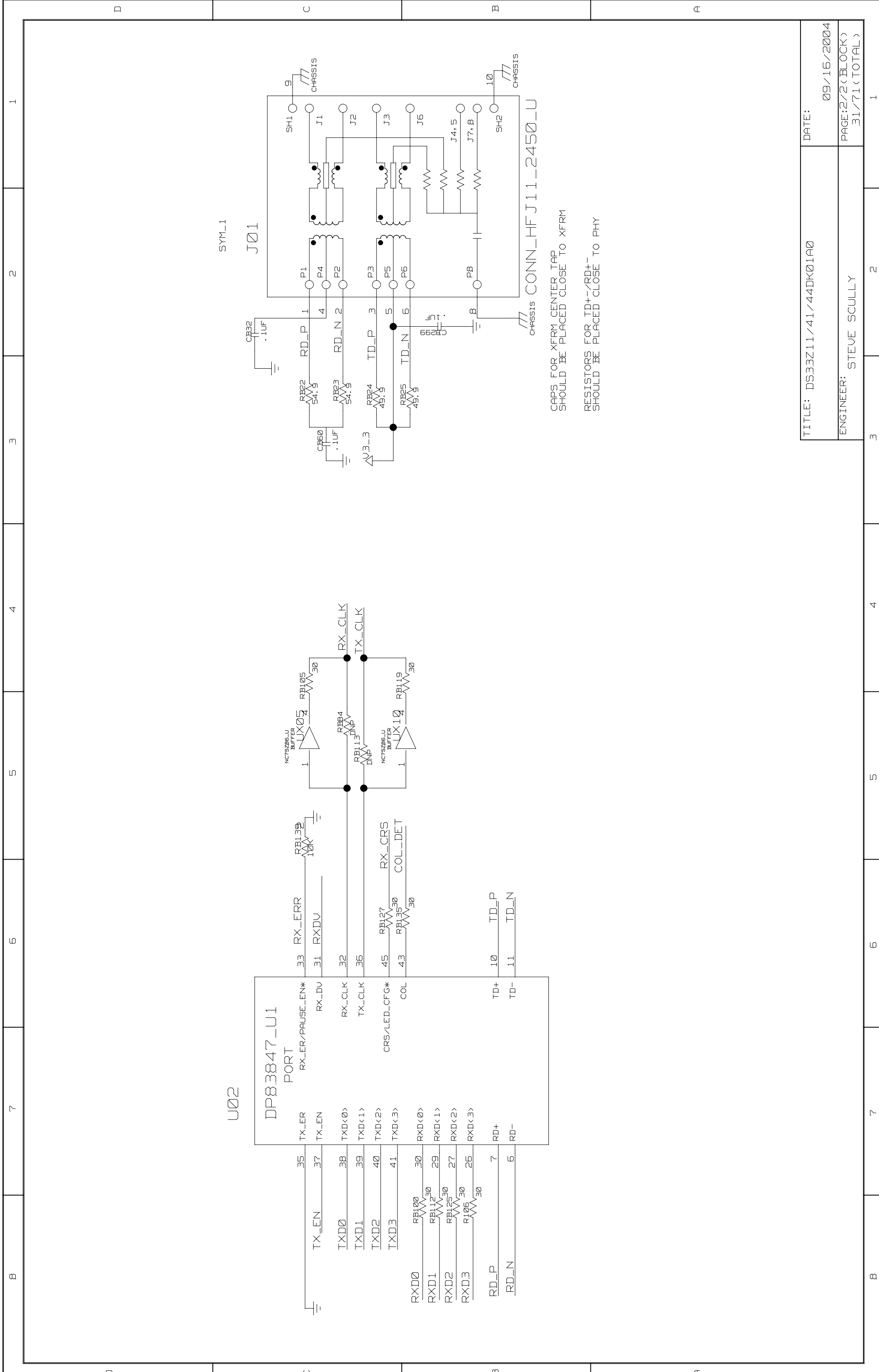
28A4< REF_CLK YTPB02 C15
 REF_CLKO RB161 B15
 27B3> 26B6> MDC R99 YTP34 F11
 27B6> 26B3> MDIO RB161 YTPB01F10
 27B6> 26B6> 24B4< SD_BA0 RB230 RB
 24B4< SD_BA1 RB246 RB
 24C4< SD_DQM0 R156 TB
 24C4< SD_DQM1 RB239 M7
 24C4< SD_DQM2 R147 T11
 24C4< SD_DQM3 RB217 N11
 24C4< SD_CS R158 PB
 24C3< SD_CLKO RB226 T7
 28D5< SD_CLKI T15
 24C4< SD_RAS RB219 P15
 24C4< SD_CAS R163 N7
 24C4< SD_WE RB282 R7
 UNMARKED RESISTORS ARE 30 OHM

A1 ZADDR0 22B2<>
 B1 ZADDR1 22B2<>
 A2 ZADDR2 22A2<>
 B2
 C2
 A3
 B3
 C3
 A4
 B4
 A5 ZMOSI
 B5 ZMISO
 C5 ZSPISCK
 B6
 C6
 A6
 B7
 C7
 A7 ZSPISCK
 B8
 C8
 A8
 B9
 C9
 A9
 B10
 C10
 A10
 B11
 C11
 A11
 B12
 C12
 A13
 B14
 C14
 A15
 B16
 C16
 A17
 B18
 C18
 A19
 B20
 C20
 A21
 B22
 C22
 A23
 B24
 C24
 A25
 B26
 C26
 A27
 B28
 C28
 A29
 B30
 C30
 A31
 B32
 C32
 A33
 B34
 C34
 A35
 B36
 C36
 A37
 B38
 C38
 A39
 B40
 C40
 A41
 B42
 C42
 A43
 B44
 C44
 A45
 B46
 C46
 A47
 B48
 C48
 A49
 B50
 C50
 A51
 B52
 C52
 A53
 B54
 C54
 A55
 B56
 C56
 A57
 B58
 C58
 A59
 B60
 C60
 A61
 B62
 C62
 A63
 B64
 C64
 A65
 B66
 C66
 A67
 B68
 C68
 A69
 B70
 C70
 A71
 B72
 C72
 A73
 B74
 C74
 A75
 B76
 C76
 A77
 B78
 C78
 A79
 B80
 C80
 A81
 B82
 C82
 A83
 B84
 C84
 A85
 B86
 C86
 A87
 B88
 C88
 A89
 B90
 C90
 A91
 B92
 C92
 A93
 B94
 C94
 A95
 B96
 C96
 A97
 B98
 C98
 A99
 B100
 C100
 A101
 B102
 C102
 A103
 B104
 C104
 A105
 B106
 C106
 A107
 B108
 C108
 A109
 B110
 C110
 A111
 B112
 C112
 A113
 B114
 C114
 A115
 B116
 C116
 A117
 B118
 C118
 A119
 B120
 C120
 A121
 B122
 C122
 A123
 B124
 C124
 A125
 B126
 C126
 A127
 B128
 C128
 A129
 B130
 C130
 A131
 B132
 C132
 A133
 B134
 C134
 A135
 B136
 C136
 A137
 B138
 C138
 A139
 B140
 C140
 A141
 B142
 C142
 A143
 B144
 C144
 A145
 B146
 C146
 A147
 B148
 C148
 A149
 B150
 C150
 A151
 B152
 C152
 A153
 B154
 C154
 A155
 B156
 C156
 A157
 B158
 C158
 A159
 B160
 C160
 A161
 B162
 C162
 A163
 B164
 C164
 A165
 B166
 C166
 A167
 B168
 C168
 A169
 B170
 C170
 A171
 B172
 C172
 A173
 B174
 C174
 A175
 B176
 C176
 A177
 B178
 C178
 A179
 B180
 C180
 A181
 B182
 C182
 A183
 B184
 C184
 A185
 B186
 C186
 A187
 B188
 C188
 A189
 B190
 C190
 A191
 B192
 C192
 A193
 B194
 C194
 A195
 B196
 C196
 A197
 B198
 C198
 A199
 B200
 C200
 A201
 B202
 C202
 A203
 B204
 C204
 A205
 B206
 C206
 A207
 B208
 C208
 A209
 B210
 C210
 A211
 B212
 C212
 A213
 B214
 C214
 A215
 B216
 C216
 A217
 B218
 C218
 A219
 B220
 C220
 A221
 B222
 C222
 A223
 B224
 C224
 A225
 B226
 C226
 A227
 B228
 C228
 A229
 B230
 C230
 A231
 B232
 C232
 A233
 B234
 C234
 A235
 B236
 C236
 A237
 B238
 C238
 A239
 B240
 C240
 A241
 B242
 C242
 A243
 B244
 C244
 A245
 B246
 C246
 A247
 B248
 C248
 A249
 B250
 C250
 A251
 B252
 C252
 A253
 B254
 C254
 A255
 B256
 C256
 A257
 B258
 C258
 A259
 B260
 C260
 A261
 B262
 C262
 A263
 B264
 C264
 A265
 B266
 C266
 A267
 B268
 C268
 A269
 B270
 C270
 A271
 B272
 C272
 A273
 B274
 C274
 A275
 B276
 C276
 A277
 B278
 C278
 A279
 B280
 C280
 A281
 B282
 C282
 A283
 B284
 C284
 A285
 B286
 C286
 A287
 B288
 C288
 A289
 B290
 C290
 A291
 B292
 C292
 A293
 B294
 C294
 A295
 B296
 C296
 A297
 B298
 C298
 A299
 B300
 C300
 A301
 B302
 C302
 A303
 B304
 C304
 A305
 B306
 C306
 A307
 B308
 C308
 A309
 B310
 C310
 A311
 B312
 C312
 A313
 B314
 C314
 A315
 B316
 C316
 A317
 B318
 C318
 A319
 B320
 C320
 A321
 B322
 C322
 A323
 B324
 C324
 A325
 B326
 C326
 A327
 B328
 C328
 A329
 B330
 C330
 A331
 B332
 C332
 A333
 B334
 C334
 A335
 B336
 C336
 A337
 B338
 C338
 A339
 B340
 C340
 A341
 B342
 C342
 A343
 B344
 C344
 A345
 B346
 C346
 A347
 B348
 C348
 A349
 B350
 C350
 A351
 B352
 C352
 A353
 B354
 C354
 A355
 B356
 C356
 A357
 B358
 C358
 A359
 B360
 C360
 A361
 B362
 C362
 A363
 B364
 C364
 A365
 B366
 C366
 A367
 B368
 C368
 A369
 B370
 C370
 A371
 B372
 C372
 A373
 B374
 C374
 A375
 B376
 C376
 A377
 B378
 C378
 A379
 B380
 C380
 A381
 B382
 C382
 A383
 B384
 C384
 A385
 B386
 C386
 A387
 B388
 C388
 A389
 B390
 C390
 A391
 B392
 C392
 A393
 B394
 C394
 A395
 B396
 C396
 A397
 B398
 C398
 A399
 B400
 C400
 A401
 B402
 C402
 A403
 B404
 C404
 A405
 B406
 C406
 A407
 B408
 C408
 A409
 B410
 C410
 A411
 B412
 C412
 A413
 B414
 C414
 A415
 B416
 C416
 A417
 B418
 C418
 A419
 B420
 C420
 A421
 B422
 C422
 A423
 B424
 C424
 A425
 B426
 C426
 A427
 B428
 C428
 A429
 B430
 C430
 A431
 B432
 C432
 A433
 B434
 C434
 A435
 B436
 C436
 A437
 B438
 C438
 A439
 B440
 C440
 A441
 B442
 C442
 A443
 B444
 C444
 A445
 B446
 C446
 A447
 B448
 C448
 A449
 B450
 C450
 A451
 B452
 C452
 A453
 B454
 C454
 A455
 B456
 C456
 A457
 B458
 C458
 A459
 B460
 C460
 A461
 B462
 C462
 A463
 B464
 C464
 A465
 B466
 C466
 A467
 B468
 C468
 A469
 B470
 C470
 A471
 B472
 C472
 A473
 B474
 C474
 A475
 B476
 C476
 A477
 B478
 C478
 A479
 B480
 C480
 A481
 B482
 C482
 A483
 B484
 C484
 A485
 B486
 C486
 A487
 B488
 C488
 A489
 B490
 C490
 A491
 B492
 C492
 A493
 B494
 C494
 A495
 B496
 C496
 A497
 B498
 C498
 A499
 B500
 C500
 A501
 B502
 C502
 A503
 B504
 C504
 A505
 B506
 C506
 A507
 B508
 C508
 A509
 B510
 C510
 A511
 B512
 C512
 A513
 B514
 C514
 A515
 B516
 C516
 A517
 B518
 C518
 A519
 B520
 C520
 A521
 B522
 C522
 A523
 B524
 C524
 A525
 B526
 C526
 A527
 B528
 C528
 A529
 B530
 C530
 A531
 B532
 C532
 A533
 B534
 C534
 A535
 B536
 C536
 A537
 B538
 C538
 A539
 B540
 C540
 A541
 B542
 C542
 A543
 B544
 C544
 A545
 B546
 C546
 A547
 B548
 C548
 A549
 B550
 C550
 A551
 B552
 C552
 A553
 B554
 C554
 A555
 B556
 C556
 A557
 B558
 C558
 A559
 B560
 C560
 A561
 B562
 C562
 A563
 B564
 C564
 A565
 B566
 C566
 A567
 B568
 C568
 A569
 B570
 C570
 A571
 B572
 C572
 A573
 B574
 C574
 A575
 B576
 C576
 A577
 B578
 C578
 A579
 B580
 C580
 A581
 B582
 C582
 A583
 B584
 C584
 A585
 B586
 C586
 A587
 B588
 C588
 A589
 B590
 C590
 A591
 B592
 C592
 A593
 B594
 C594
 A595
 B596
 C596
 A597
 B598
 C598
 A599
 B600
 C600
 A601
 B602
 C602
 A603
 B604
 C604
 A605
 B606
 C606
 A607
 B608
 C608
 A609
 B610
 C610
 A611
 B612
 C612
 A613
 B614
 C614
 A615
 B616
 C616
 A617
 B618
 C618
 A619
 B620
 C620
 A621
 B622
 C622
 A623
 B624
 C624
 A625
 B626
 C626
 A627
 B628
 C628
 A629
 B630
 C630
 A631
 B632
 C632
 A633
 B634
 C634
 A635
 B636
 C636
 A637
 B638
 C638
 A639
 B640
 C640
 A641
 B642
 C642
 A643
 B644
 C644
 A645
 B646
 C646
 A647
 B648
 C648
 A649
 B650
 C650
 A651
 B652
 C652
 A653
 B654
 C654
 A655
 B656
 C656
 A657
 B658
 C658
 A659
 B660
 C660
 A661
 B662
 C662
 A663
 B664
 C664
 A665
 B666
 C666
 A667
 B668
 C668
 A669
 B670
 C670
 A671
 B672
 C672
 A673
 B674
 C674
 A675
 B676
 C676
 A677
 B678
 C678
 A679
 B680
 C680
 A681
 B682
 C682
 A683
 B684
 C684
 A685
 B686
 C686
 A687
 B688
 C688
 A689
 B690
 C690
 A691
 B692
 C692
 A693
 B694
 C694
 A695
 B696
 C696
 A697
 B698
 C698
 A699
 B700
 C700
 A701
 B702
 C702
 A703
 B704
 C704
 A705
 B706
 C706
 A707
 B708
 C708
 A709
 B710
 C710
 A711
 B712
 C712
 A713
 B714
 C714
 A715
 B716
 C716
 A717
 B718
 C718
 A719
 B720
 C720
 A721
 B722
 C722
 A723
 B724
 C724
 A725
 B726
 C726
 A727
 B728
 C728
 A729
 B730
 C730
 A731
 B732
 C732
 A733
 B734
 C734
 A735
 B736
 C736
 A737
 B738
 C738
 A739
 B740
 C740
 A741
 B742
 C742
 A743
 B744
 C744
 A745
 B746
 C746
 A747
 B748
 C748
 A749
 B750
 C750
 A751
 B752
 C752
 A753
 B754
 C754
 A755
 B756
 C756
 A757
 B758
 C758
 A759
 B760
 C760
 A761
 B762
 C762
 A763
 B764
 C764
 A765
 B766
 C766
 A767
 B768
 C768
 A769
 B770
 C770
 A771
 B772
 C772
 A773
 B774
 C774
 A775
 B776
 C776
 A777
 B778
 C778
 A779
 B780
 C780
 A781
 B782
 C782
 A783
 B784
 C784
 A785
 B786
 C786
 A787
 B788
 C788
 A789
 B790
 C790
 A791
 B792
 C792
 A793
 B794
 C794
 A795
 B796
 C796
 A797
 B798
 C798
 A799
 B800
 C800
 A801
 B802
 C802
 A803
 B804
 C804
 A805
 B806
 C806
 A807
 B808
 C808
 A809
 B810
 C810
 A811
 B812
 C812
 A813
 B814
 C814
 A815
 B816
 C816
 A817
 B818
 C818
 A819
 B820
 C820
 A821
 B822
 C822
 A823
 B824
 C824
 A825
 B826
 C826
 A827
 B828
 C828
 A829
 B830
 C830
 A831
 B832
 C832
 A833
 B834
 C834
 A835
 B836
 C836
 A837
 B838
 C838
 A839
 B840
 C840
 A841
 B842
 C842
 A843
 B844
 C844
 A845
 B846
 C846
 A847
 B848
 C848
 A849
 B850
 C850
 A851
 B852
 C852
 A853
 B854
 C854
 A855
 B856
 C856
 A857
 B858
 C858
 A859
 B860
 C860
 A861
 B862
 C862
 A863
 B864
 C864
 A865
 B866
 C866
 A867
 B868
 C868
 A869
 B870
 C870
 A871
 B872
 C872
 A873
 B874
 C874
 A875
 B876
 C876
 A877
 B878
 C878
 A879
 B880
 C880
 A881
 B882
 C882
 A883
 B884
 C884
 A885
 B886
 C886
 A887
 B888
 C888
 A889
 B890
 C890
 A891
 B892
 C892
 A893
 B894
 C894
 A895
 B896
 C896
 A897
 B898
 C898
 A899
 B900
 C900
 A901
 B902
 C902
 A903
 B904
 C904
 A905
 B906
 C906
 A907
 B908
 C908
 A909
 B910
 C910
 A911
 B912
 C912
 A913
 B914
 C914
 A915
 B916
 C916
 A917
 B918
 C918
 A919
 B920
 C920
 A921
 B922
 C922
 A923
 B924
 C924
 A925
 B926
 C926
 A927
 B928
 C928
 A929
 B930
 C930
 A931
 B932
 C932
 A933
 B934
 C934
 A935
 B936
 C936
 A937
 B938
 C938
 A939
 B940
 C940
 A941
 B942
 C942
 A943
 B944
 C944
 A945
 B946
 C946
 A947
 B948
 C948
 A949
 B950
 C950
 A951
 B952
 C952
 A953
 B954
 C954
 A955
 B956
 C956
 A957
 B958
 C958
 A959
 B960
 C960
 A961
 B962
 C962
 A963
 B964
 C964
 A965
 B966
 C966
 A967
 B968
 C968
 A96

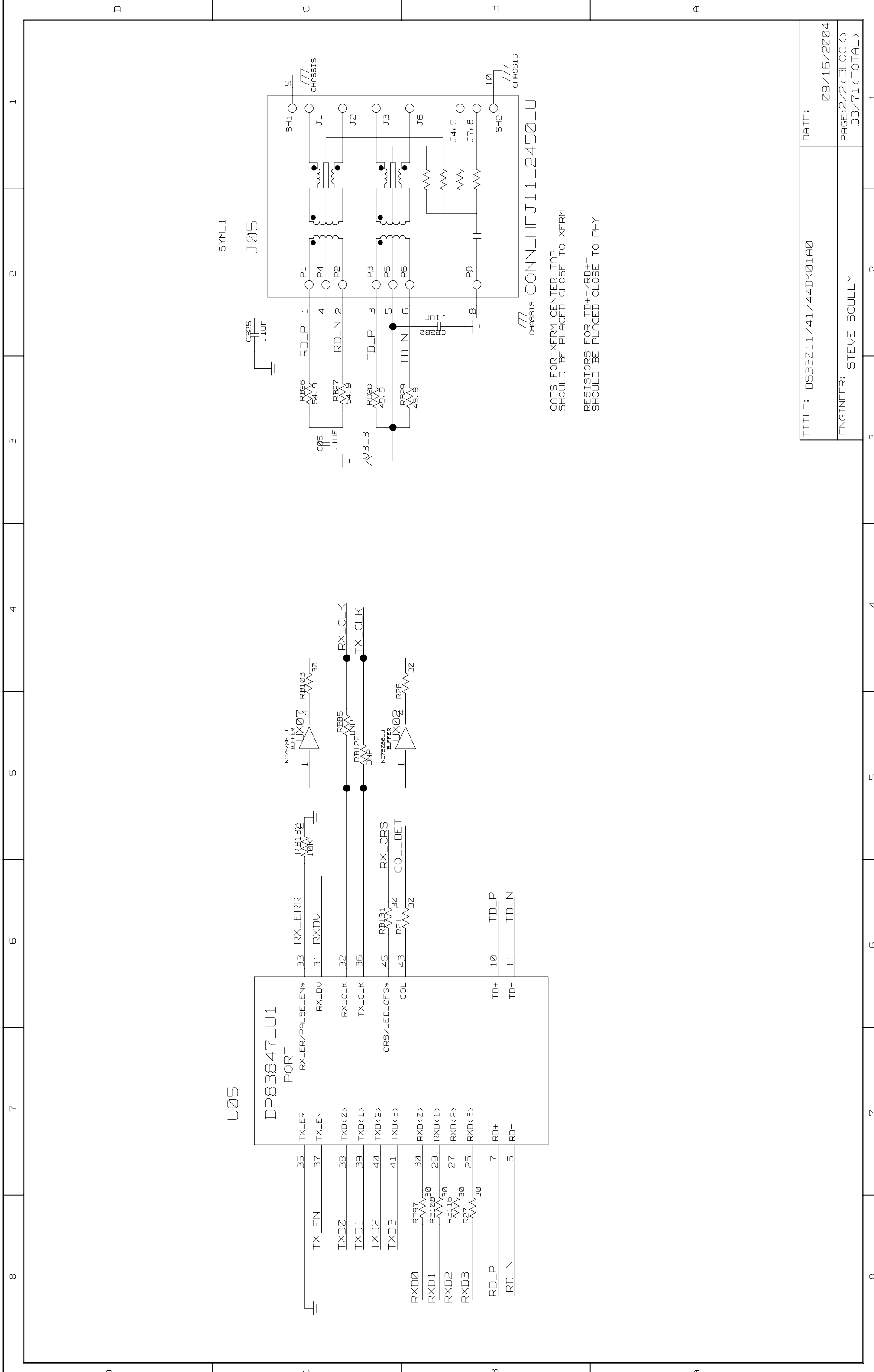




TITLE: DS33Z11/41/44DK01A0
 ENGINEER: STEVE SCULLY
 DATE: 09/16/2004
 PAGE: 15/8 (BLOCK)
 25/71 (TOTAL)



TITLE: DS33Z11/41/44DK01A0	DATE: 09/16/2004
ENGINEER: STEVE SCULLY	PAGE:2/2(BLOCK) .31/71(TOTAL)

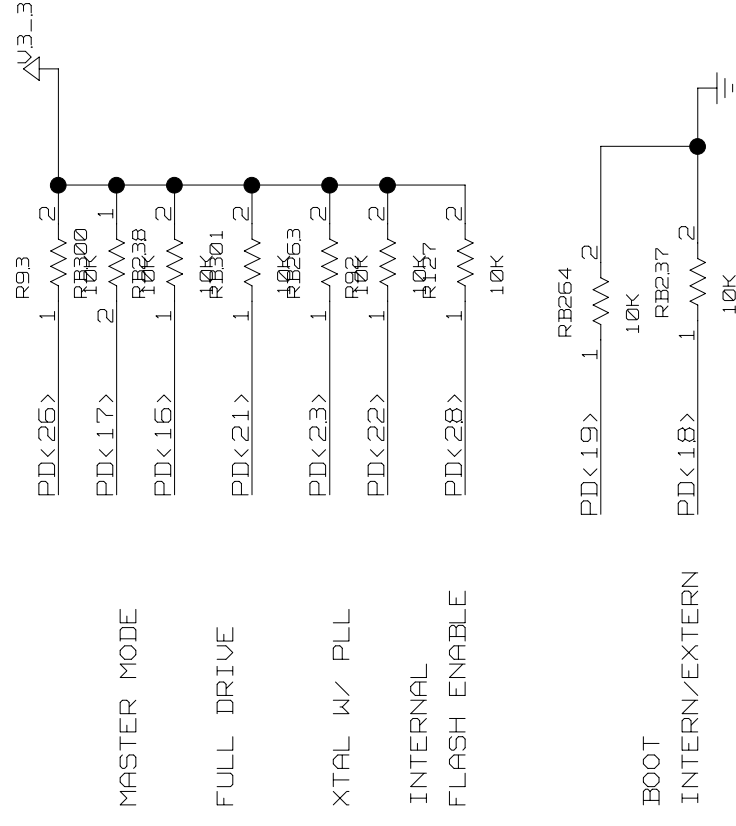


CAPS FOR XFRM CENTER TAP SHOULD BE PLACED CLOSE TO XFRM

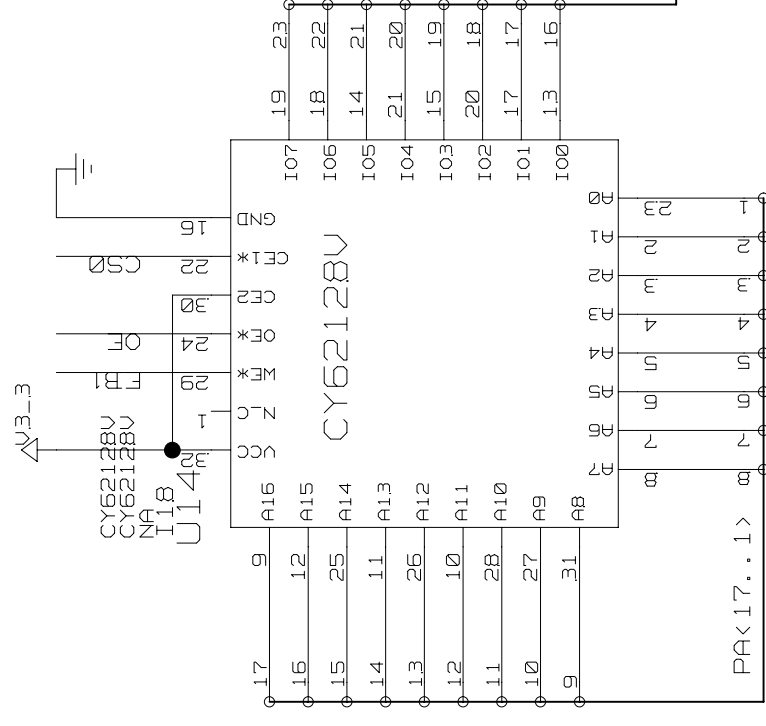
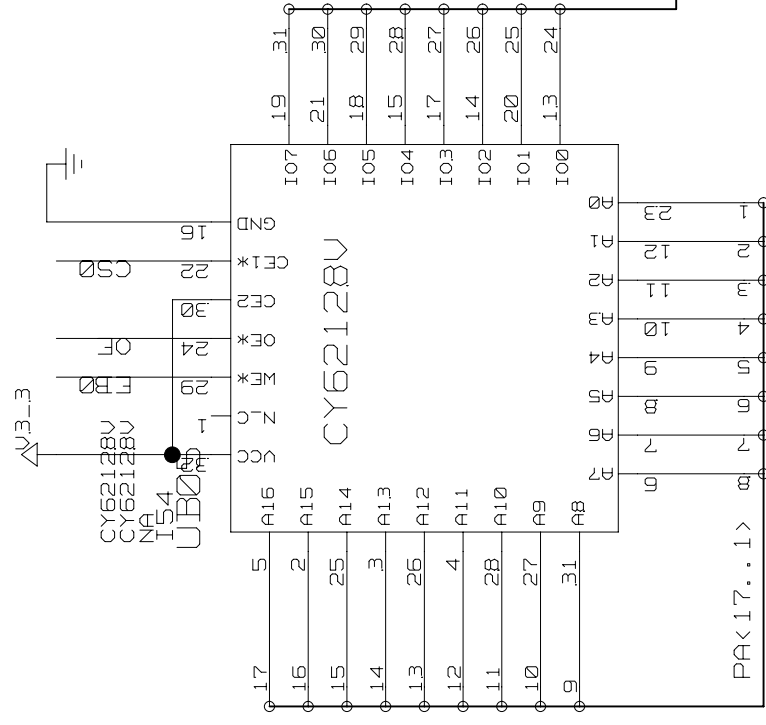
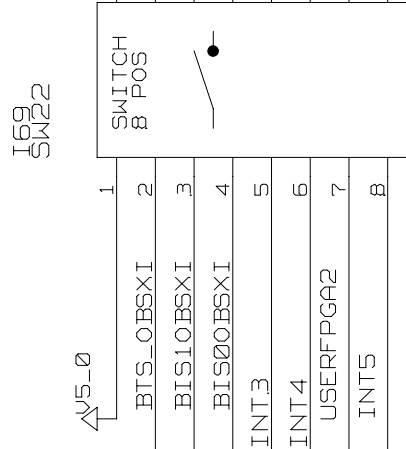
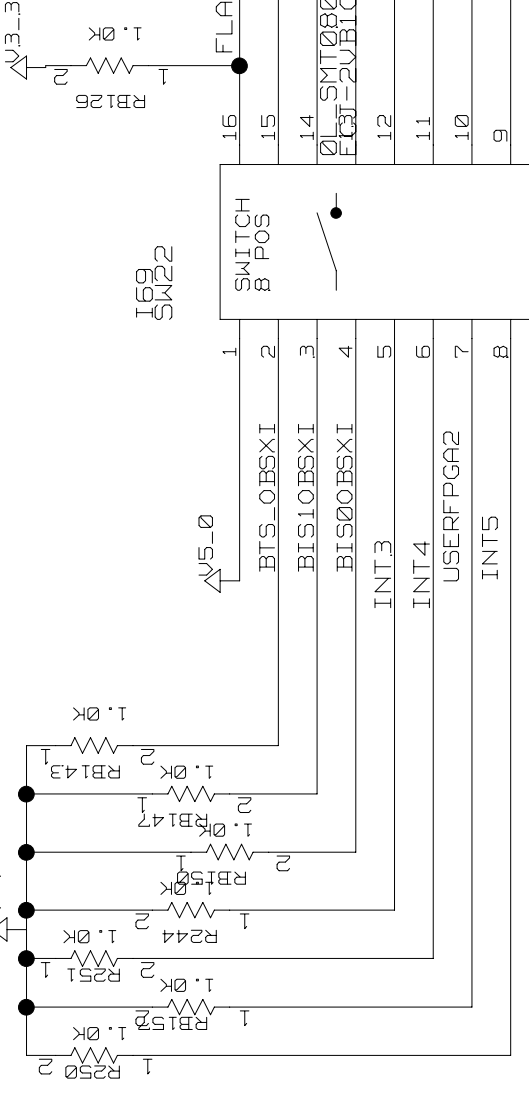
RESISTORS FOR TD+/-/RD+/- SHOULD BE PLACED CLOSE TO PHY

TITLE: DS33Z11/41/44DK01A0	DATE: 09/16/2004
ENGINEER: STEVE SCULLY	PAGE:2/2 (BLOCK) .33/71 (TOTAL)

RESET CONFIGURATION

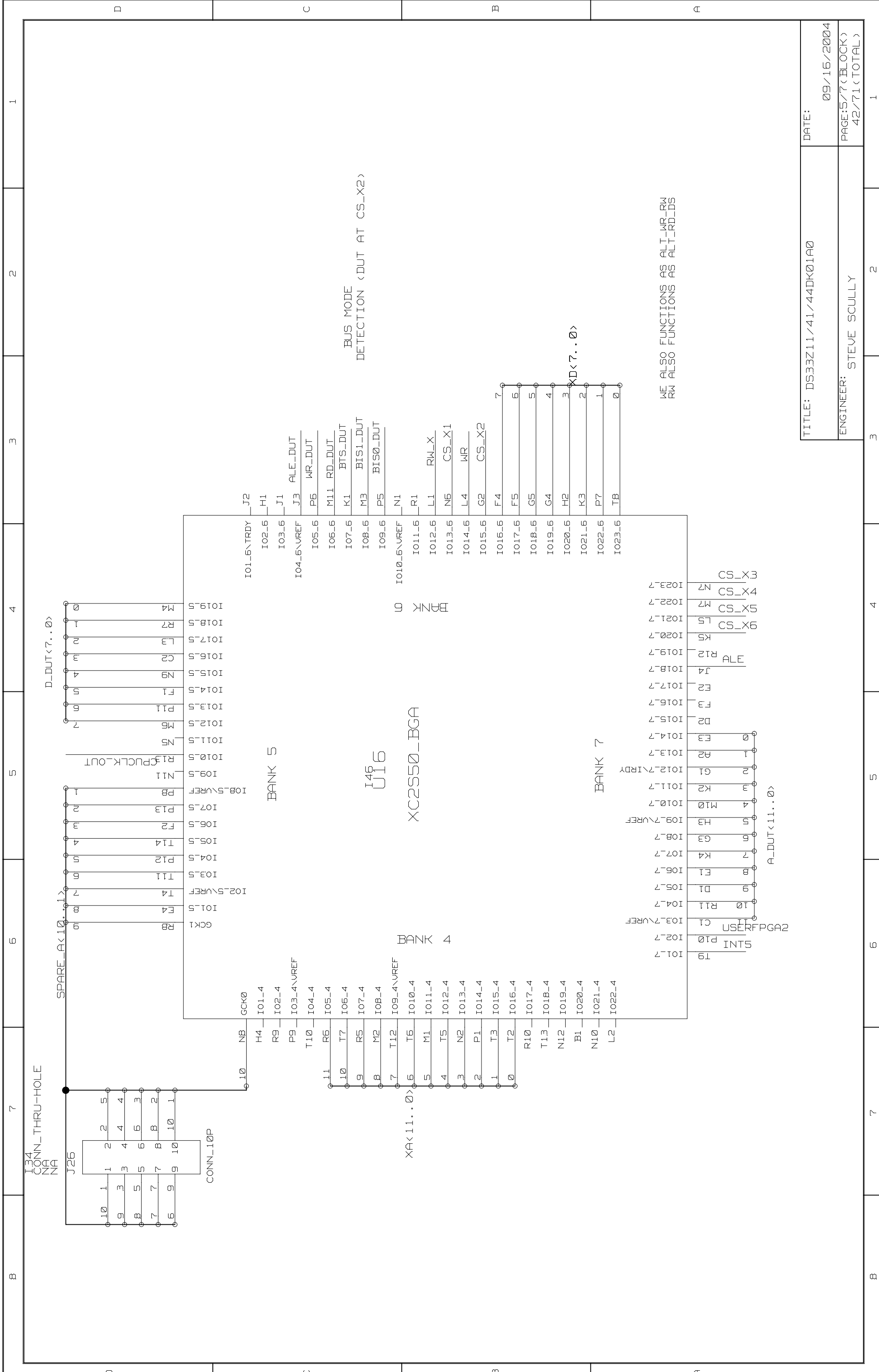


WHEN SET FOR BOOT INTERNAL D18 HAS A 10K LOAD TO GND
 BOOT EXIT D18 HAS A 10.5K LOAD TO V3V



RESET AND CHIP CONFIGURATION

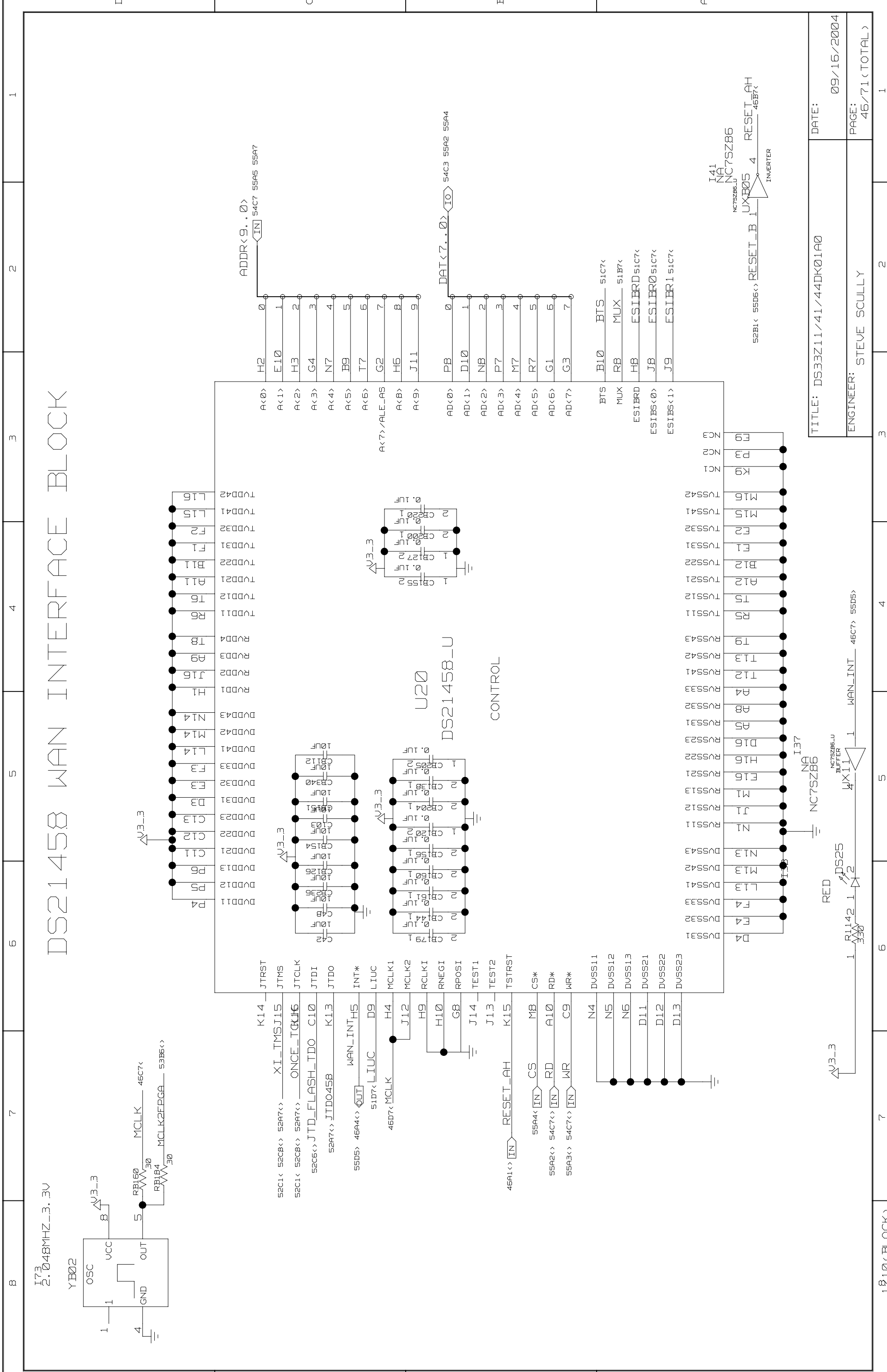
TITLE: DS33Z11/41/44DK01A0	DATE: 09/16/2004
ENGINEER: STEVE SCULLY	PAGE:27(BLOCK) .39/71(TOTAL)



BUS MODE
DETECTION (DUT AT CS_X2)

WE ALSO FUNCTIONS AS ALT_WR_RW
RW ALSO FUNCTIONS AS ALT_RD_DS

TITLE: DS33Z11/41/44DK01A0	DATE: 09/16/2004
ENGINEER: STEVE SCULLY	PAGE:5/7 (BLOCK) 42/71 (TOTAL)



DS21458 WAN INTERFACE BLOCK

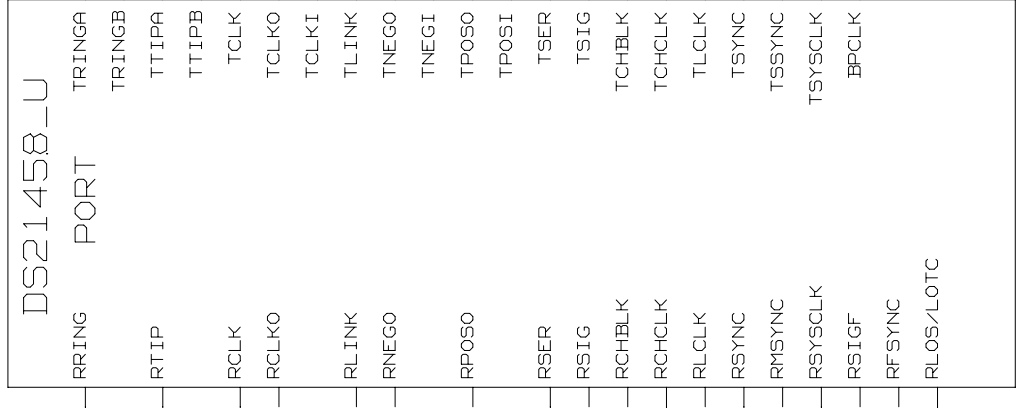
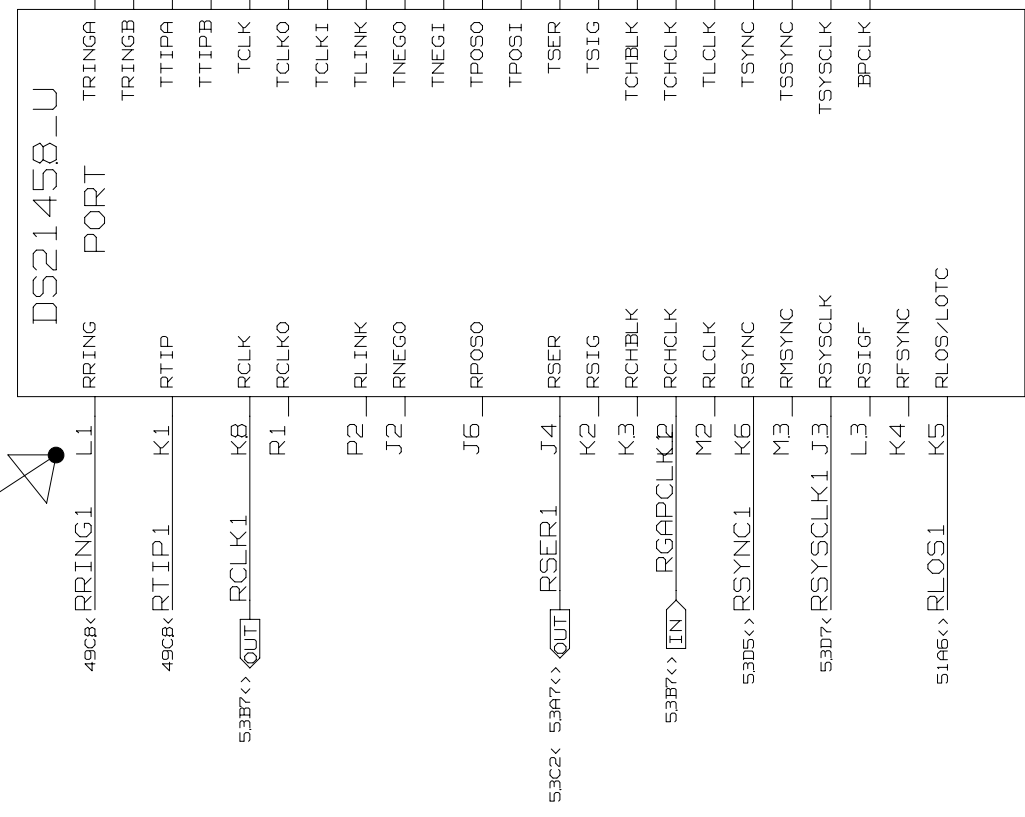
TITLE: DS33Z11/41/44DK01A0	DATE: 09/16/2004
ENGINEER: STEVE SCULLY	PAGE: 46/71(TOTAL)

PORT1_RRING = PIN L1

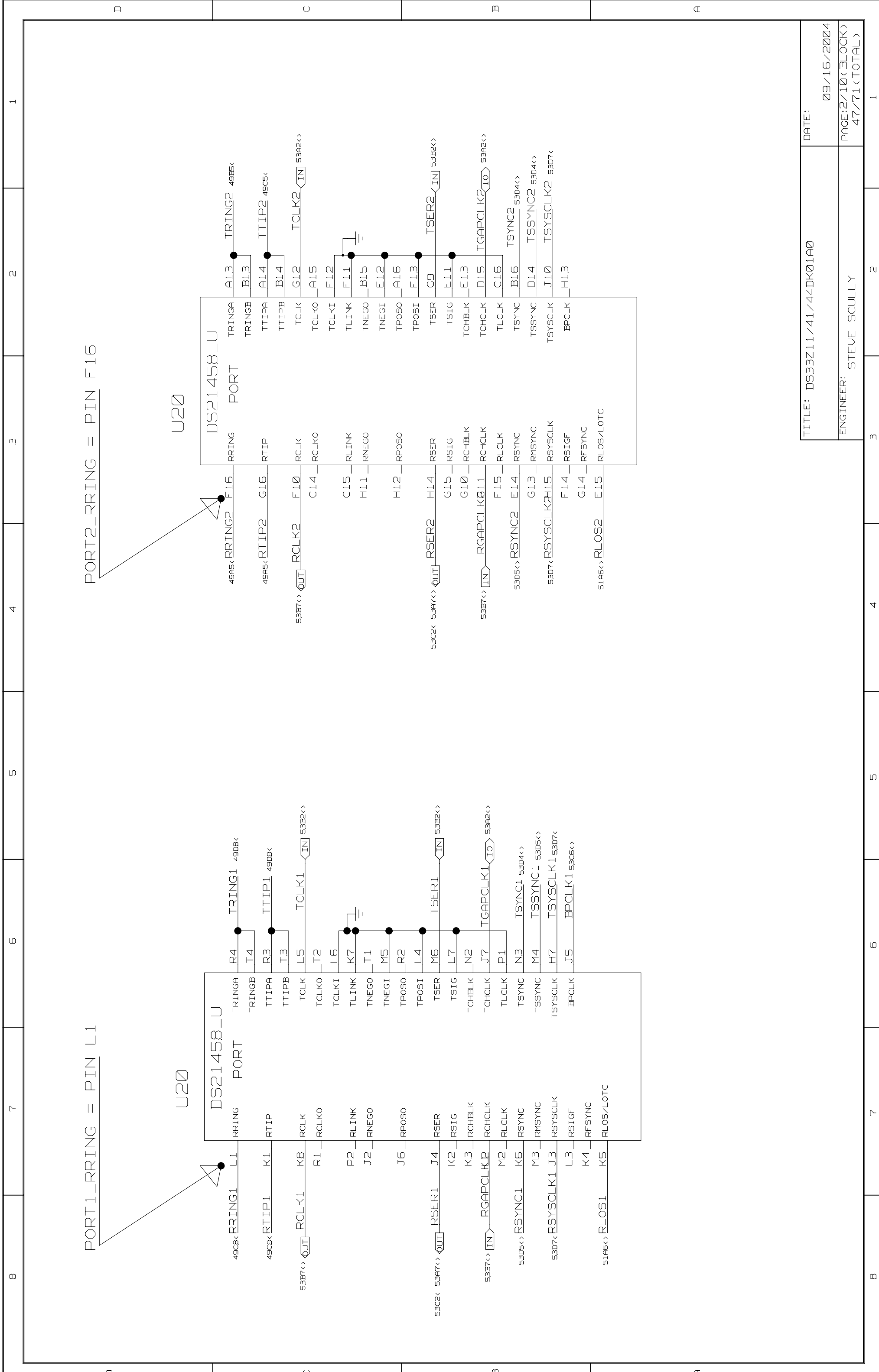
PORT2_RRING = PIN F16

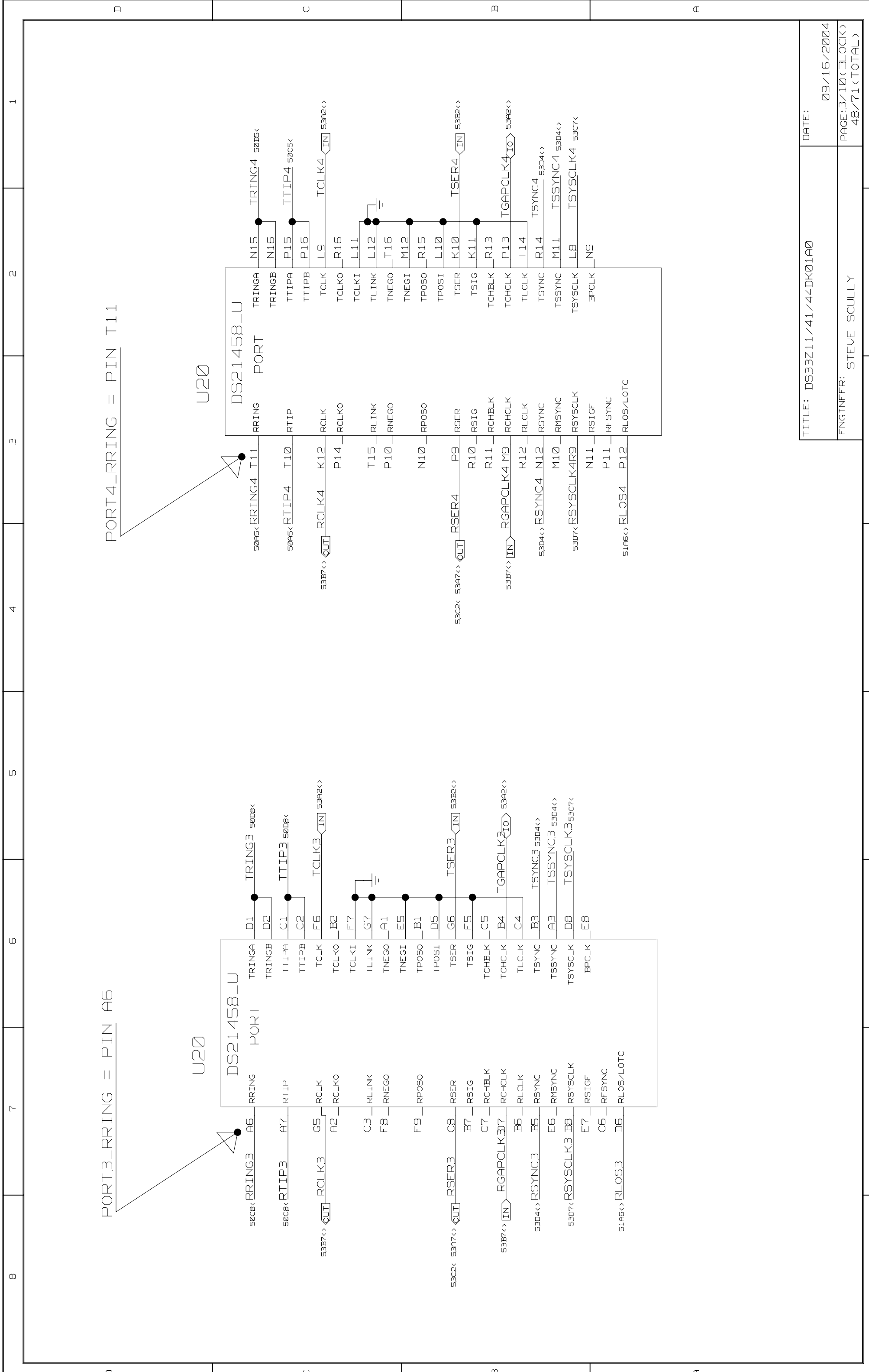
U20

U20



TITLE: DS33Z11/41/44DK01A0	DATE: 09/16/2004
ENGINEER: STEVE SCULLY	PAGE: 2/10 (BLOCK) 47/71 (TOTAL)





PORT3_RRING = PIN A6

PORT4_RRING = PIN T11

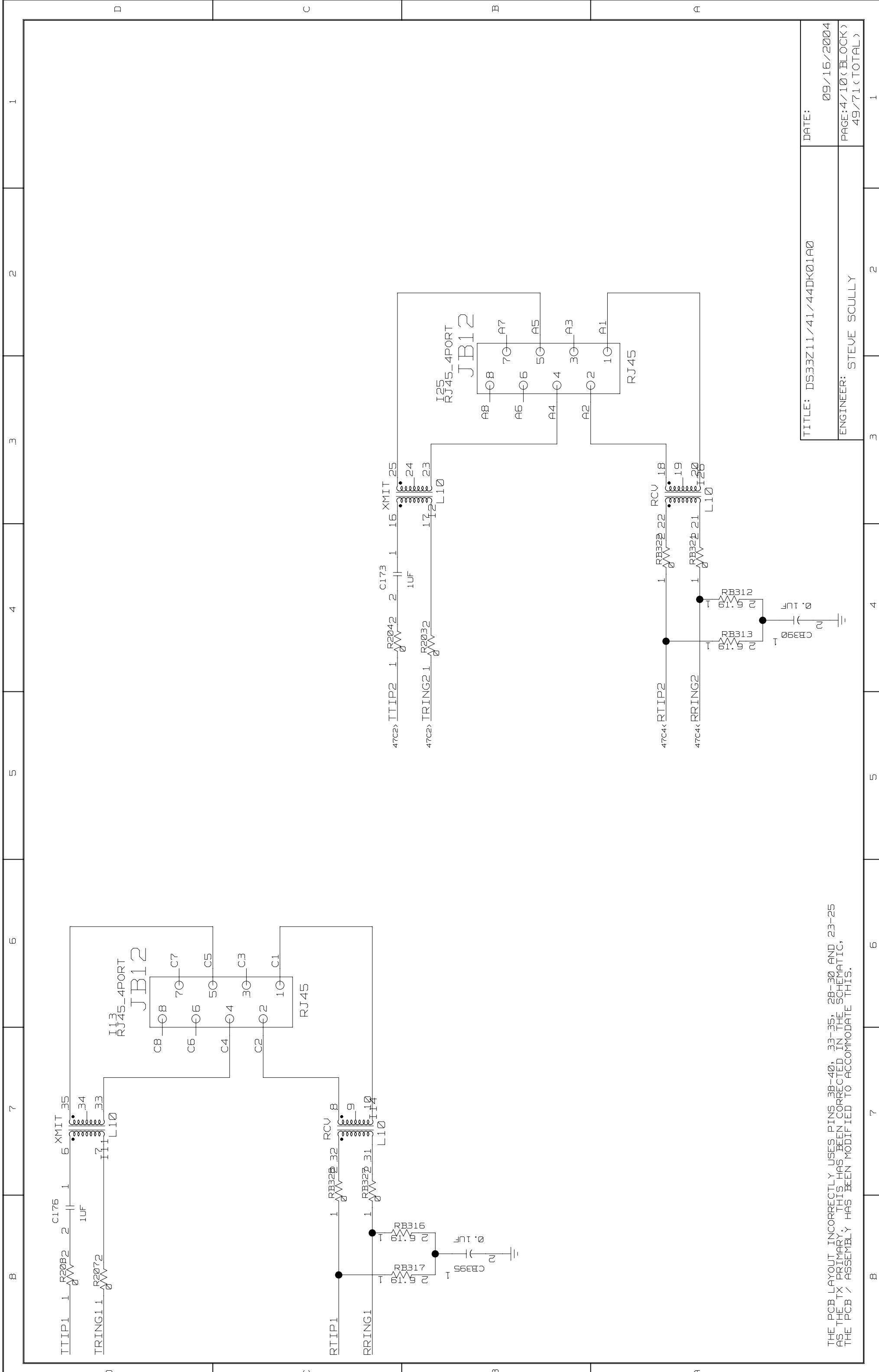
U20

U20

DS21458-U		PORT	
50C8< RRING3	A6	RRING	TRINGA
50C8< RTIP3	A7	RTIP	TRINGB
53B7<> OUT RCLK3	G5	RCLK	TTIPA
	A2	RCLKO	TTIPB
	C3	RLINK	TCLK
	FB	RNEGO	TCLKO
	F9	RPOSO	TCLKI
53C2< 53A7<> OUT RSEER3	CB	RSER	TLINK
	B7	RSIG	TNEGO
	C7	RCHBLK	TNEGI
53B7<> IN RGAPCLK3	B7	RCHCLK	TPOSO
	B6	RLCLK	TPOSI
53D4<> RSYNC3	B5	RSYNC	TSER
	E6	RMSYNC	TSIG
53D7< RSYNCK3	B8	RSYNCK	TCHBLK
	E7	RSIGF	TCHCLK
	C6	RFSYNC	TLCLK
51A6<> RLOS3	D6	RLOS/LOTC	TSYNC
			TSSYNC
			TSYNCK
			TSYSCLK
			BPCLK

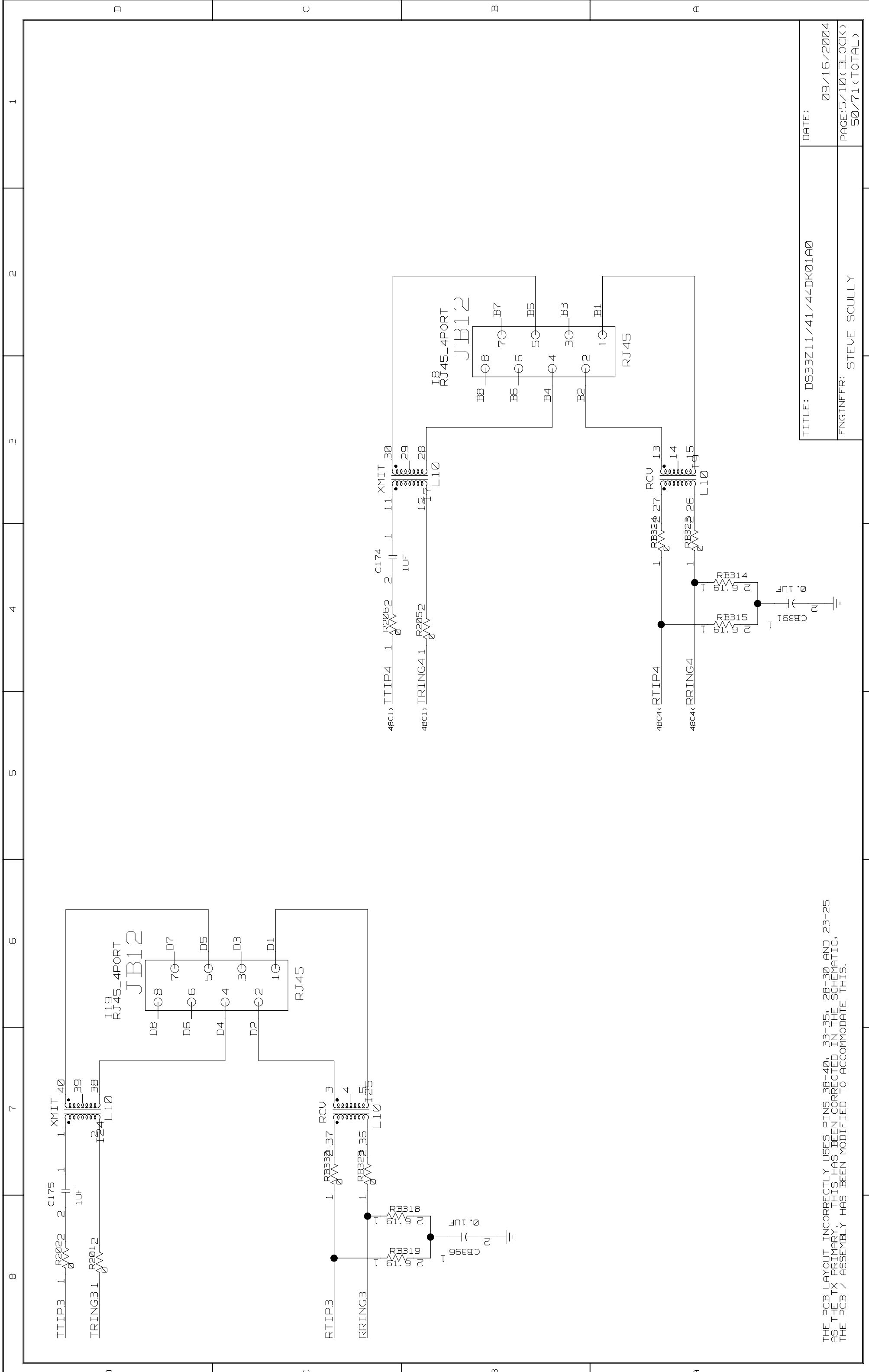
50A5< RRING4	T11	RRING	TRINGA
50A5< RTIP4	T10	RTIP	TRINGB
53B7<> OUT RCLK4	K12	RCLK	TTIPA
	P14	RCLKO	TTIPB
	T15	RLINK	TCLK
	P10	RNEGO	TCLKO
	N10	RPOSO	TCLKI
53C2< 53A7<> OUT RSEER4	P9	RSER	TLINK
	R10	RSIG	TNEGO
	R11	RCHBLK	TNEGI
53B7<> IN RGAPCLK4	M9	RCHCLK	TPOSO
	R12	RLCLK	TPOSI
53D4<> RSYNC4	N12	RSYNC	TSER
	M10	RMSYNC	TSIG
53D7< RSYNCK4	R9	RSYNCK	TCHBLK
	N11	RSIGF	TCHCLK
	P11	RFSYNC	TLCLK
51A6<> RLOS4	P12	RLOS/LOTC	TSYNC
			TSSYNC
			TSYNCK
			TSYSCLK
			BPCLK

TITLE: DS33Z11/41/44DK01A0	DATE: 09/16/2004
ENGINEER: STEVE SCULLY	PAGE:3/10 (BLOCK) 48/71 (TOTAL)



THE PCB LAYOUT INCORRECTLY USES PINS 38-40, 33-35, 28-30 AND 23-25 AS THE TX PRIMARY. THIS HAS BEEN CORRECTED IN THE SCHEMATIC. THE PCB / ASSEMBLY HAS BEEN MODIFIED TO ACCOMMODATE THIS.

TITLE: DS33Z11/41/44DK01A0	DATE: 09/16/2004
ENGINEER: STEVE SCULLY	PAGE:4/10 (BLOCK) 49/71 (TOTAL)



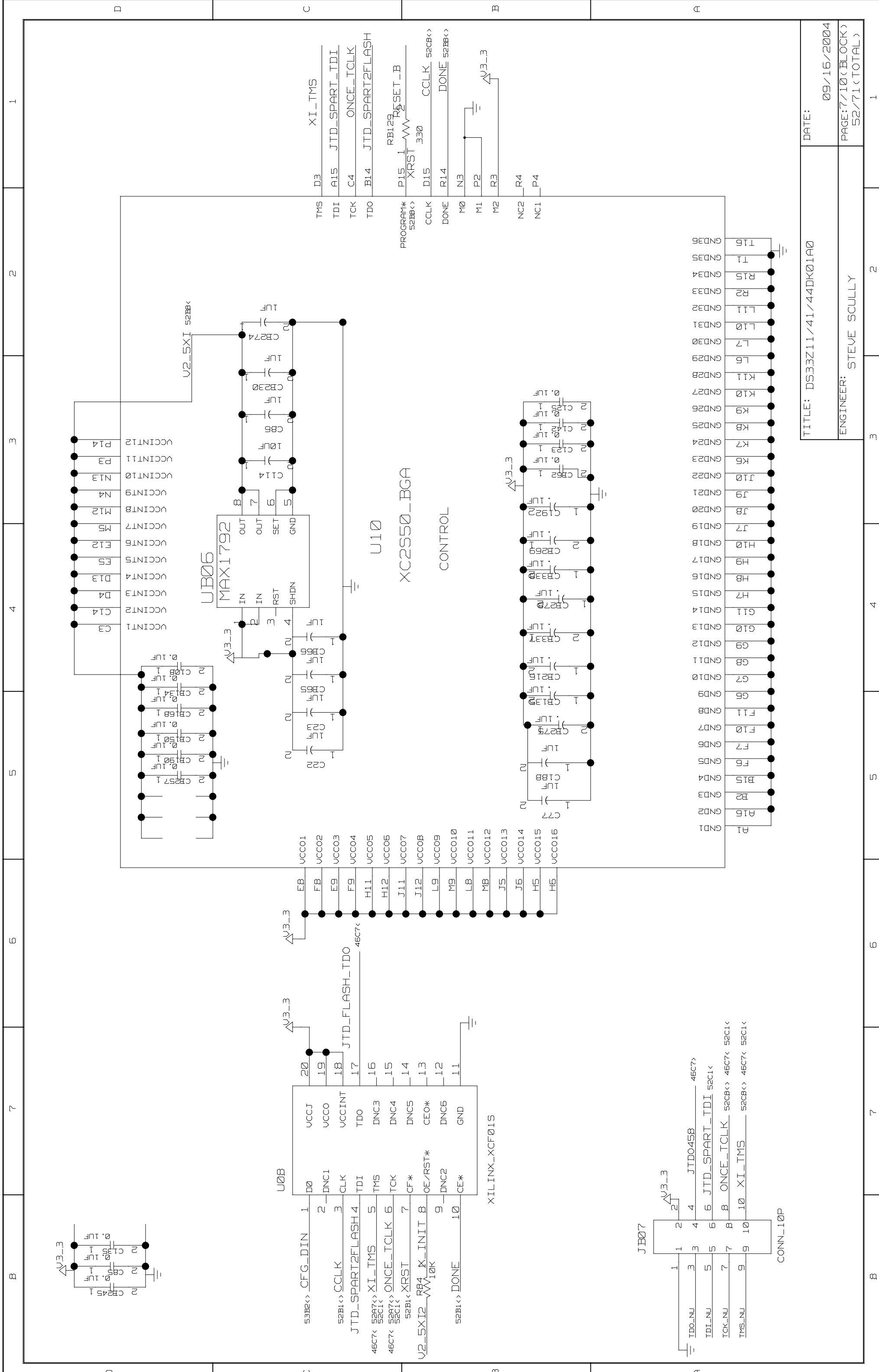
THE PCB LAYOUT INCORRECTLY USES PINS 38-40, 33-35, 28-30 AND 23-25 AS THE TX PRIMARY. THIS HAS BEEN CORRECTED IN THE SCHEMATIC, THE PCB / ASSEMBLY HAS BEEN MODIFIED TO ACCOMMODATE THIS.

TITLE: DS33Z11/41/44DK01A0

DATE: 09/16/2004

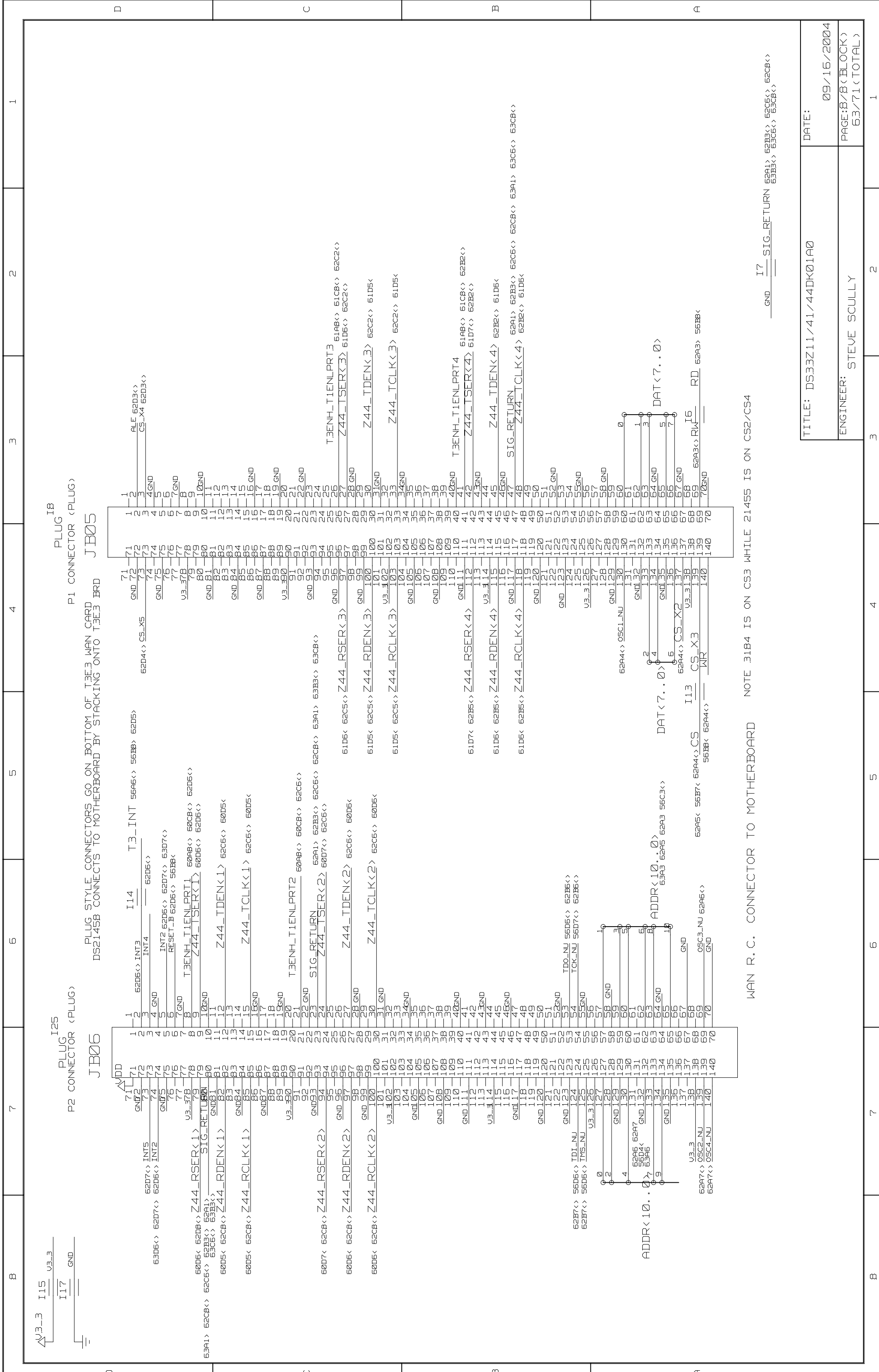
PAGE:5/10<BLOCK>
50/71<TOTAL>

ENGINEER: STEVE SCULLY



TITLE: DS33Z11/41/44DK01A0
 ENGINEER: STEVE SCULLY
 DATE: 09/16/2004
 PAGE: 7/10 (BLOCK)
 52/71 (TOTAL)

D	C	B	A
D	C	B	A
1	2	3	4
1	2	3	4
D	C	B	A
D	C	B	A
1	2	3	4
1	2	3	4
D	C	B	A
D	C	B	A
1	2	3	4
1	2	3	4
D	C	B	A
D	C	B	A
1	2	3	4
1	2	3	4
D	C	B	A
D	C	B	A
1	2	3	4
1	2	3	4
D	C	B	A
D	C	B	A
1	2	3	4
1	2	3	4
D	C	B	A
D	C	B	A
1	2	3	4
1	2	3	4
D	C	B	A
D	C	B	A
1	2	3	4
1	2	3	4
D	C	B	A
D	C	B	A
1	2	3	4
1	2	3	4
D	C	B	A
D	C	B	A
1	2	3	4
1	2	3	4
D	C	B	A
D	C	B	A
1	2	3	4
1	2	3	4
D	C	B	A
D	C	B	A
1	2	3	4
1	2	3	4
D	C	B	A
D	C	B	A
1	2	3	4
1	2	3	4
D	C	B	A
D	C	B	A
1	2	3	4
1	2	3	4
D	C	B	A
D	C	B	A
1	2	3	4
1	2	3	4
D	C	B	A
D	C	B	A
1	2	3	4
1	2	3	4
D	C	B	A
D	C	B	A
1	2	3	4
1	2	3	4
D	C	B	A
D	C	B	A
1	2	3	4
1	2	3	4
D	C	B	A
D	C	B	A
1	2	3	4
1	2	3	4
D	C	B	A
D	C	B	A
1	2	3	4
1	2	3	4
D	C	B	A
D	C	B	A
1	2	3	4
1	2	3	4
D	C	B	A
D	C	B	A
1	2	3	4
1	2	3	4
D	C	B	A
D	C	B	A
1	2	3	4
1	2	3	4
D	C	B	A
D	C	B	A
1	2	3	4
1	2	3	4
D	C	B	A
D	C	B	A
1	2	3	4
1	2	3	4
D	C	B	A
D	C	B	A
1	2	3	4
1	2	3	4
D	C	B	A
D	C	B	A
1	2	3	4
1	2	3	4
D	C	B	A
D	C	B	A
1	2	3	4
1	2	3	4
D	C	B	A
D	C	B	A
1	2	3	



WAN R.C. CONNECTOR TO MOTHERBOARD NOTE 3184 IS ON CS3 WHILE 21455 IS ON CS2/CS4

TITLE: DS33Z11/41/44DK01A0	DATE: 09/16/2004
ENGINEER: STEVE SCULLY	PAGE: 8/8 (BLOCK) 63/71 (TOTAL)