

**VIP-3/SC/D37SUB/F/LED**

Order No.: 2322223

The illustration shows a 37-position version with female insert

<http://eshop.phoenixcontact.de/phoenix/treeViewClick.do?UID=2322223>

VARIOFACE module, with screw connection and D-Subminiature socket strip, for mounting on NS 35/7.5 or NS 32, with LED, 37-pos.



| Commercial data          |                    |
|--------------------------|--------------------|
| GTIN (EAN)               | 4046356451840      |
| sales group              | I501               |
| Pack                     | 1 pcs.             |
| Customs tariff           | 85369010           |
| Weight/Piece             | 0.2004 KG          |
| Catalog page information | Page 285 (IF-2009) |

## Product notes

WEEE/RoHS-compliant since:  
06/03/2009

<http://www.download.phoenixcontact.com>  
Please note that the data given here has been taken from the online catalog. For comprehensive information and data, please refer to the user documentation. The General Terms and Conditions of Use apply to Internet downloads.

**Technical data****General data**

|   |         |
|---|---------|
| Nominal voltage $U_N$                     | 24 V DC |
| Max. current carrying capacity per branch | 2.5 A   |
| Number of positions                       | 37      |
| Width                                     | 72.7 mm |

|   |                  |
|---|------------------|
| Height                                  | 69 mm            |
| Depth                                   | 62 mm            |
| Status display                          | LED              |
| Ambient temperature (operation)         | -20 °C ... 50 °C |
| Ambient temperature (storage/transport) | -20 °C ... 70 °C |
| Mounting position                       | Any              |
| Standards/regulations                   | IEC 60664        |
|   | DIN EN 50178     |
|   | IEC 62103        |
| Pollution degree                        | 2                |
| Surge voltage category                  | II               |

#### Connection data

|  |                     |
|--|---------------------|
| Connection 1                           | PCB connection      |
| Connection in acc. with standard       | IEC / EN            |
| Type of connection                     | Screw connection    |
| Conductor cross section solid min.     | 0.2 mm <sup>2</sup> |
| Conductor cross section solid max.     | 4 mm <sup>2</sup>   |
| Conductor cross section stranded min.  | 0.2 mm <sup>2</sup> |
| Conductor cross section stranded max.  | 2.5 mm <sup>2</sup> |
| Conductor cross section AWG/kcmil min. | 24                  |
| Conductor cross section AWG/kcmil max  | 12                  |
| Stripping length                       | 8 mm                |
| Screw thread                           | M3                  |
| Type of connection                     | Pluggable           |
| Number of positions                    | 37                  |

#### Certificates / Approvals



Certification CUL, UL

#### CUL

|                       |       |
|-----------------------|-------|
| Nominal voltage $U_N$ | 125 V |
| Nominal current $I_N$ | 2 A   |

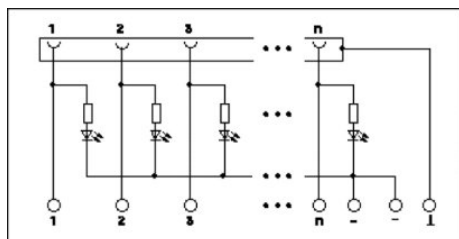
|                       |       |
|-----------------------|-------|
| AWG/kcmil             | 30-12 |
| <b>UL</b>             |       |
| Nominal voltage $U_N$ | 125 V |
| Nominal current $I_N$ | 2 A   |
| AWG/kcmil             | 30-12 |

**Accessories**

| Item                   | Designation                       | Description   |
|------------------------|-----------------------------------|---|
| <b>Cable/conductor</b> |                                   |   |
| 2302434                | CABLE D-SUB-S-S-S/.../.../...     | Shielded round cable, assembled with two D-SUB male connectors, variable cable length               |
| 2302340                | CABLE D-SUB-S/.../.../...         | Shielded round cable, assembled with one D-SUB male and one female connector, variable cable length |
| 2302191                | CABLE-D37SUB/B/S/ 50/<br>KONFEK/S | Round shielded cable set, with 37-pos. D-SUB female and male connectors, cable length: 0.5 m        |
| 2302201                | CABLE-D37SUB/B/S/100/<br>KONFEK/S | Round shielded cable set, with 37-pos. D-SUB female and male connectors, cable length: 1 m          |
| 2302214                | CABLE-D37SUB/B/S/150/<br>KONFEK/S | Round shielded cable set, with 37-pos. D-SUB female and male connectors, cable length: 1.5 m        |
| 2302227                | CABLE-D37SUB/B/S/200/<br>KONFEK/S | Round shielded cable set, with 37-pos. D-SUB female and male connectors, cable length: 2 m          |
| 2302230                | CABLE-D37SUB/B/S/300/<br>KONFEK/S | Round shielded cable set, with 37-pos. D-SUB female and male connectors, cable length: 3 m          |
| 2302243                | CABLE-D37SUB/B/S/400/<br>KONFEK/S | Round shielded cable set, with 37-pos. D-SUB female and male connectors, cable length: 4 m          |
| 2302256                | CABLE-D37SUB/B/S/600/<br>KONFEK/S | Round shielded cable set, with 37-pos. D-SUB female and male connectors, cable length: 6 m          |

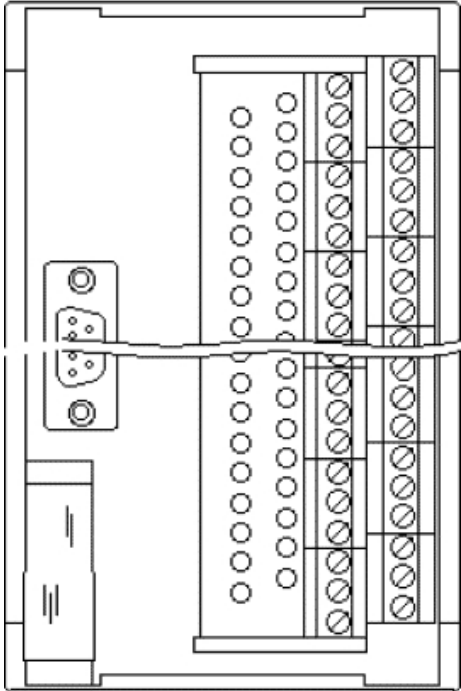
**Diagrams/Drawings**

Circuit diagram



Schematic diagram

---



**Address**

PHOENIX CONTACT Inc., USA  
586 Fulling Mill Road  
Middletown, PA 17057, USA  
Phone (800) 888-7388  
Fax (717) 944-1625  
<http://www.phoenixcon.com>



© 2010 Phoenix Contact  
Technical modifications reserved;