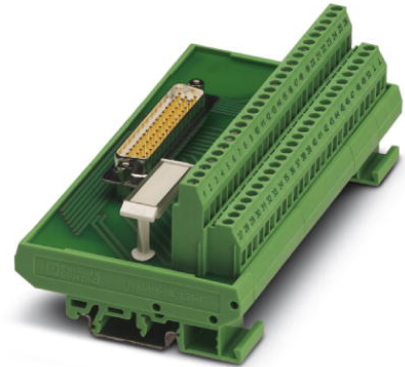


# FLKM-D50 SUB/S/MKKDS

Order No.: 2304584




<http://eshop.phoenixcontact.de/phoenix/treeViewClick.do?UID=2304584>

VARIOFACE module, with screw connection and D-Subminiature pin strip, for mounting on NS 35/7.5 or NS 32, 50-pos.



## Commercial data

GTIN (EAN)	 4 017918 973803
sales group	I011
Pack	1 pcs.
Customs tariff	85369010
Catalog page information	Page 248 (IF-2007)

## Product notes

WEEE/RoHS-compliant since:  
10/14/2008



<http://www.download.phoenixcontact.com>  
Please note that the data given here has been taken from the online catalog. For comprehensive information and data, please refer to the user documentation. The General Terms and Conditions of Use apply to Internet downloads.

## Technical data

### General data

Nominal voltage $U_N$	125 V AC/DC
Max. current carrying capacity per branch	2.5 A
	1.5 A (with even load on all branches)
Max. total current of voltage supply	2.5 A (per contact)

Number of positions	50
Width	146.3 mm
Height	77 mm
Depth	58.5 mm
Status display	No
Ambient temperature (operation)	-20 °C ... 50 °C
Ambient temperature (storage/transport)	-20 °C ... 70 °C
Test voltage	800 V (50 Hz, 1 min.)
Test voltage contact/contact	0.8 kV AC
Mounting position	Any
Assembly instructions	In rows with zero spacing
Standards/regulations	IEC 60664
	DIN EN 50178
	IEC 62103
Pollution degree	2
Surge voltage category	II

#### Connection data

Connection 1	PCB connection
Connection in acc. with standard	IEC / EN
Type of connection	Screw connection
Conductor cross section solid min.	0.2 mm <sup>2</sup>
Conductor cross section solid max.	4 mm <sup>2</sup>
Conductor cross section stranded min.	0.2 mm <sup>2</sup>
Conductor cross section stranded max.	2.5 mm <sup>2</sup>
Conductor cross section AWG/kcmil min.	24
Conductor cross section AWG/kcmil max	12
Stripping length	8 mm
Screw thread	M3
Connection 2	D-SUB connection
Type of connection	Pluggable

#### Certificates / Approvals



Certification CUL, UL

**Accessories**

Item	Designation	Description
<b>Cable/conductor</b>		
2302421	CABLE D-SUB-B-B-S/.../.../...	Shielded round cable, assembled with two D-SUB female connectors, variable cable length
2302340	CABLE D-SUB-S/.../.../...	Shielded round cable, assembled with one D-SUB male and one female connector, variable cable length
2926292	CABLE-D-50SUB/F/OE/0,25/S/0,5M	Shielded cable with a 50-pos. D-SUB female connector and one open end. The individual wires are labeled 1 to 50 and fitted with ferrules. The braided shield is routed to a separate cable end. Cable length: 0.5 m.
2926302	CABLE-D-50SUB/F/OE/0,25/S/1,0M	Shielded cable with a 50-pos. D-SUB female connector and one open end. The individual wires are labeled 1 to 50 and fitted with ferrules. The braided shield is routed to a separate cable end. Cable length: 1 m.
2926315	CABLE-D-50SUB/F/OE/0,25/S/1,5M	Shielded cable with a 50-pos. D-SUB female connector and one open end. The individual wires are labeled 1 to 50 and fitted with ferrules. The braided shield is routed to a separate cable end. Cable length: 1.5 m.
2926328	CABLE-D-50SUB/F/OE/0,25/S/2,0M	Shielded cable with a 50-pos. D-SUB female connector and one open end. The individual wires are labeled 1 to 50 and fitted with ferrules. The braided shield is routed to a separate cable end. Cable length: 2 m.
2926331	CABLE-D-50SUB/F/OE/0,25/S/3,0M	Shielded cable with a 50-pos. D-SUB female connector and one open end. The individual wires are labeled 1 to 50 and fitted with ferrules. The braided shield is routed to a separate cable end. Cable length: 3 m.
2926344	CABLE-D-50SUB/F/OE/0,25/S/4,0M	Shielded cable with a 50-pos. D-SUB female connector and one open end. The individual wires are labeled 1 to 50 and fitted with ferrules. The braided shield is routed to a separate cable end. Cable length: 4 m.
2926357	CABLE-D-50SUB/F/OE/0,25/S/6,0M	Shielded cable with a 50-pos. D-SUB female connector and one open end. The individual wires are labeled 1 to 50 and fitted with ferrules. The braided shield is routed to a separate cable end. Cable length: 6 m.
2302269	CABLE-D50SUB/B/S/ 50/ KONFEK/S	Round shielded cable set, with 50-pos. D-SUB female and male connectors, cable length: 0.5 m
2302272	CABLE-D50SUB/B/S/100/ KONFEK/S	Round shielded cable set, with 50-pos. D-SUB female and male connectors, cable length: 1 m
2302285	CABLE-D50SUB/B/S/150/ KONFEK/S	Round shielded cable set, with 50-pos. D-SUB female and male connectors, cable length: 1.5 m

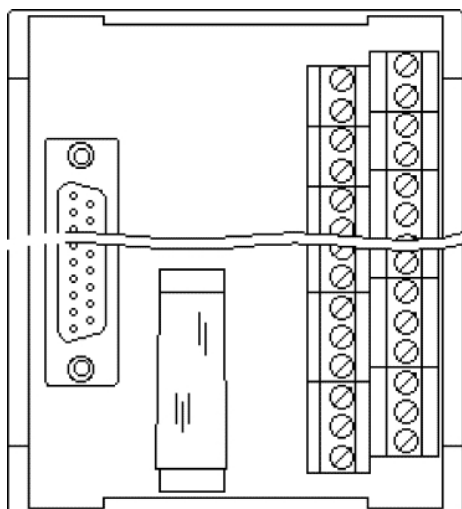
2302298	CABLE-D50SUB/B/S/200/ KONFEK/S	Round shielded cable set, with 50-pos. D-SUB female and male connectors, cable length: 2 m
2302308	CABLE-D50SUB/B/S/300/ KONFEK/S	Round shielded cable set, with 50-pos. D-SUB female and male connectors, cable length: 3 m
2302311	CABLE-D50SUB/B/S/400/ KONFEK/S	Round shielded cable set, with 50-pos. D-SUB female and male connectors, cable length: 4 m
2302324	CABLE-D50SUB/B/S/600/ KONFEK/S	Round shielded cable set, with 50-pos. D-SUB female and male connectors, cable length: 6 m

#### General

2900908	CABLE-D-50SUB-F-OE-0,25- S/...	Shielded cable with a 50-pos. D-SUB female connector and one open end. The individual wires are labeled 1 to 50 and fitted with ferrules. The braided shield is routed to a separate cable end. Cable length: variable.
---------	-----------------------------------	---

#### Diagrams/Drawings

##### Schematic diagram



**Address**

PHOENIX CONTACT Deutschland GmbH  
Flachmarktstr. 8  
32825 Blomberg, Germany  
Phone +49 5235 3 12000  
Fax +49 5235 3 41200  
<http://www.phoenixcontact.de>



© 2011 Phoenix Contact  
Technical modifications reserved;