

Multiple opto-coupler module, Screw connection, Mounting type: Mounting rail TS 35, 4 channels, Separated, Input voltage: 24 VDC

### Business data

Article number	5947.2
Article name	OKI 4/24 DC
GTIN (EAN)	4044211070755
Packaging unit	1
Quantity unit	PC
Weight per piece (not including packaging)	78.4 g
Weight per piece (including packaging)	102.7 g
Unit of weight	G
Customs number	85414900
Country of origin	NL
Product description	Opto-coupler module

### Technical data

#### Dimensions

Length	87 mm
Width	48 mm
Height	57 mm

#### Ratings

Overvoltage category	III
Contamination degree	2

#### Connection data

Connection principle	Screw connection
Wire cross-section single core (rigid), min.	0.2 mm <sup>2</sup>
Wire cross-section single-core (rigid), max.	4 mm <sup>2</sup>
Wire cross-section stranded, min.	0.2 mm <sup>2</sup>
Wire cross-section stranded, max.	2.5 mm <sup>2</sup>
Wire cross-section stranded with wire-end ferrules, min.	0.2 mm <sup>2</sup>
Wire cross-section stranded with wire-end ferrules, max.	2.5 mm <sup>2</sup>
Stripping length	7 mm
Torque	0.6 Nm

#### Input data

Input voltage	24 VDC ± 10%
Drop-out voltage	<9,6 VDC
Control current	5 mA
Number of channels	8
Power consumption	0,3 W
Switch-on threshold U/I	>19,2 VDC / 5 mA

#### Output data

Output voltage range	5-48 VDC V
Voltage drop at 20 °C and rated current, max.	<1 V
Switching current, min.	0,001 A
Continuous current max. / Inrush current max.	0,1 / - A

#### Materials

Working temperature, min.	-20 °C
Working temperature, max.	55 °C

---

### Technical data

---

#### Further technical data

Status display	✓
Response/release time	10 ms
Switching frequency	0,1 kHz
Test voltage	4 kV

#### Environmental Product Compliance

REACH Conform	yes
REACH Reference date	2022-06-10
REACH Candidate Substance Note	No
RoHS Conform	yes

---

### Approvals

---

#### Standards and regulations

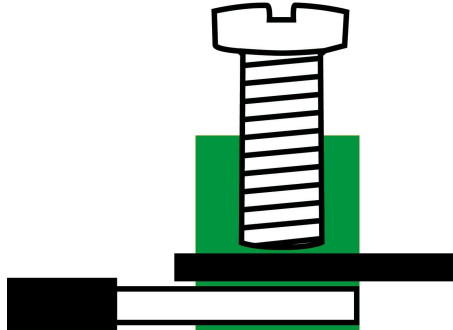
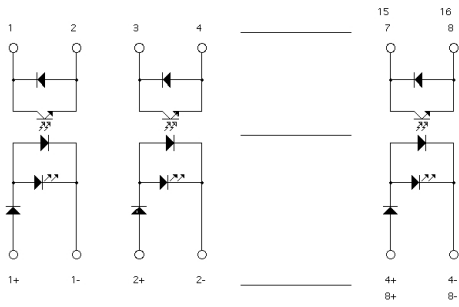
---

Standards / specifications

DIN VDE 0110 / EN 50178

---

### Media



---

### Accessories

---