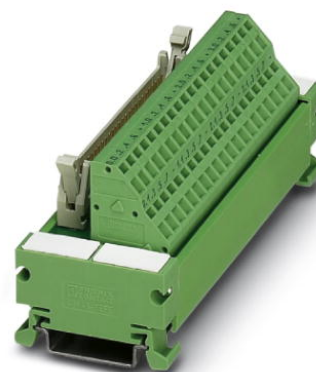


UM 45-FLK14/ZFKDS/PLC

Order No.: 2965172

The illustration shows the version UM 45-FLK50/ZFKDS/PLC




<http://eshop.phoenixcontact.de/phoenix/treeViewClick.do?UID=2965172>

VARIOFACE COMPACT LINE, interface module for 8 channels, for assembly on DIN rail NS 35/7.5



Commercial data

GTIN (EAN)	 4 017918 125172
sales group	I631
Pack	1 pcs.
Customs tariff	85369010
Catalog page information	Page 233 (IF-2009)

Product notes

WEEE/RoHS-compliant since:
11/01/2006



<http://www.download.phoenixcontact.com>
Please note that the data given here has been taken from the online catalog. For comprehensive information and data, please refer to the user documentation. The General Terms and Conditions of Use apply to Internet downloads.

Technical data

General data

Nominal voltage U_N	60 V DC
Max. current carrying capacity per branch	1 A
Max. total current of voltage supply	3 A
Number of positions	14

Width	59 mm
Height	45 mm
Depth	50 mm
Status display	No
Ambient temperature (operation)	-20 °C ... 50 °C
Ambient temperature (storage/transport)	-20 °C ... 70 °C
Test voltage	500 V (50 Hz, 1 min.)
Mounting position	Any
Standards/regulations	IEC 60664
	DIN EN 50178
	IEC 62103
Pollution degree	2
Surge voltage category	II

Connection data

Connection 1	Field level
Type of connection	Spring-cage connection
Conductor cross section solid min.	0.2 mm ²
Conductor cross section solid max.	2.5 mm ²
Conductor cross section stranded min.	0.2 mm ²
Conductor cross section stranded max.	1.5 mm ²
Conductor cross section AWG/kcmil min.	24
Conductor cross section AWG/kcmil max	14
Stripping length	8 mm
Connection 2	Control system level
Number of connections	1
Type of connection	Flat-ribbon cable plug connector in acc. with IEC 60603-13
Number of positions	14

Certificates / Approvals

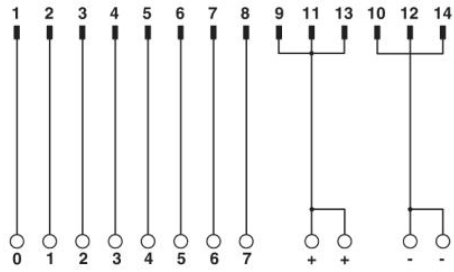


Certification

CUL, GOST, UL

Diagrams/Drawings

Circuit diagram



UM 45-FLK14/ZFKDS/PLC connection scheme

Address

PHOENIX CONTACT Deutschland GmbH
Flachmarktstr. 8
32825 Blomberg, Germany
Phone +49 5235 3 12000
Fax +49 5235 3 41200
<http://www.phoenixcontact.de>



© 2011 Phoenix Contact
Technical modifications reserved;