

# VIP-3/SC/D50SUB/F/LED

Order No.: 2322236

The illustration shows a 37-position version with female insert



<http://eshop.phoenixcontact.de/phoenix/treeViewClick.do?UID=2322236>


VARIOFACE module, with screw connection and D-Subminiature socket strip, for mounting on NS 35/7.5 or NS 32, with LED, 50-pos.



Commercial data	
GTIN (EAN)	4046356451758
sales group	I501
Pack	1 pcs.
Customs tariff	85369010
Weight/Piece	0.2561 KG
Catalog page information	Page 285 (IF-2009)

**Product notes**

WEEE/RoHS-compliant since:  
06/03/2009



<http://www.download.phoenixcontact.com>  
Please note that the data given here has been taken from the online catalog. For comprehensive information and data, please refer to the user documentation. The General Terms and Conditions of Use apply to Internet downloads.

## Technical data

General data	
Nominal voltage $U_N$	24 V DC
Max. current carrying capacity per branch	0.5 A
Number of positions	50
Width	98.2 mm

Height	69 mm
Depth	62 mm
Status display	LED
Ambient temperature (operation)	-20 °C ... 45 °C
Ambient temperature (storage/transport)	-20 °C ... 70 °C
Mounting position	Any
Standards/regulations	IEC 60664
	DIN EN 50178
	IEC 62103
Pollution degree	2
Surge voltage category	II

#### Connection data

Connection 1	PCB connection
Connection in acc. with standard	IEC / EN
Type of connection	Screw connection
Conductor cross section solid min.	0.2 mm <sup>2</sup>
Conductor cross section solid max.	4 mm <sup>2</sup>
Conductor cross section stranded min.	0.2 mm <sup>2</sup>
Conductor cross section stranded max.	2.5 mm <sup>2</sup>
Conductor cross section AWG/kcmil min.	24
Conductor cross section AWG/kcmil max	12
Stripping length	8 mm
Screw thread	M3
Type of connection	Pluggable
Number of positions	50

#### Certificates / Approvals



Certification CUL, UL

#### CUL

Nominal voltage $U_N$	125 V
Nominal current $I_N$	1 A

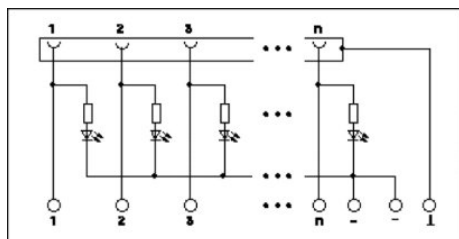
AWG/kcmil	30-12
<b>UL</b>	
Nominal voltage $U_N$	125 V
Nominal current $I_N$	1 A
AWG/kcmil	30-12

**Accessories**

Item	Designation	Description
<b>Cable/conductor</b>		
2302434	CABLE D-SUB-S-S-S/.../.../...	Shielded round cable, assembled with two D-SUB male connectors, variable cable length
2302340	CABLE D-SUB-S/.../.../...	Shielded round cable, assembled with one D-SUB male and one female connector, variable cable length
2302269	CABLE-D50SUB/B/S/ 50/ KONFEK/S	Round shielded cable set, with 50-pos. D-SUB female and male connectors, cable length: 0.5 m
2302272	CABLE-D50SUB/B/S/100/ KONFEK/S	Round shielded cable set, with 50-pos. D-SUB female and male connectors, cable length: 1 m
2302285	CABLE-D50SUB/B/S/150/ KONFEK/S	Round shielded cable set, with 50-pos. D-SUB female and male connectors, cable length: 1.5 m
2302298	CABLE-D50SUB/B/S/200/ KONFEK/S	Round shielded cable set, with 50-pos. D-SUB female and male connectors, cable length: 2 m
2302308	CABLE-D50SUB/B/S/300/ KONFEK/S	Round shielded cable set, with 50-pos. D-SUB female and male connectors, cable length: 3 m
2302311	CABLE-D50SUB/B/S/400/ KONFEK/S	Round shielded cable set, with 50-pos. D-SUB female and male connectors, cable length: 4 m
2302324	CABLE-D50SUB/B/S/600/ KONFEK/S	Round shielded cable set, with 50-pos. D-SUB female and male connectors, cable length: 6 m

**Diagrams/Drawings**

Circuit diagram



Schematic diagram

---



**Address**

PHOENIX CONTACT Inc., USA  
586 Fulling Mill Road  
Middletown, PA 17057, USA  
Phone (800) 888-7388  
Fax (717) 944-1625  
<http://www.phoenixcon.com>



© 2010 Phoenix Contact  
Technical modifications reserved;