

## Han 16E-Male-Screw Fe(Au)/CuNi Type J

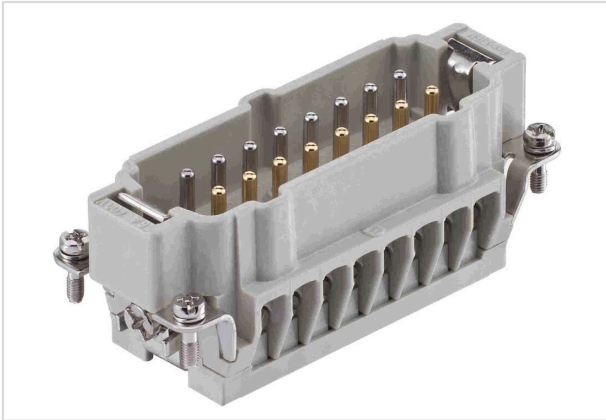


Image is for illustration purposes only. Please refer to product description.

Part number	09 33 016 2691
Specification	Han 16E-Male-Screw Fe(Au)/CuNi Type J
HARTING eCatalogue	<a href="https://b2b.harting.com/09330162691">https://b2b.harting.com/09330162691</a>

### Identification

Category	Inserts
Series	Han <sup>®</sup> Thermocouple
Identification	Han E <sup>®</sup>

### Version

Termination method	Screw termination
Gender	Male
Size	16 B
With wire protection	Yes
Number of contacts	16
PE contact	Yes

### Technical characteristics

Conductor cross-section	1 ... 2.5 mm <sup>2</sup>
Rated current	16 A
Rated voltage	400 V
Rated impulse voltage	6 kV
Pollution degree	3
Insulation resistance	>10 <sup>10</sup> Ω
Tightening torque	0.5 Nm
Limiting temperature	-40 ... +125 °C
Mating cycles	≥500



Pushing Performance  
Since 1945

## Material properties

Material (insert)	Polycarbonate (PC)
Colour (insert)	RAL 7032 (pebble grey)
Material flammability class acc. to UL 94	V-0
RoHS	compliant
ELV status	compliant with exemption
China RoHS	50
REACH Annex XVII substances	Not contained
REACH ANNEX XIV substances	Not contained
REACH SVHC substances	Not contained
California Proposition 65 substances	Yes
California Proposition 65 substances	Lead
Fire protection on railway vehicles	EN 45545-2 (2020-08)
Requirement set with Hazard Levels	R22 (HL 1-3) R23 (HL 1-3)

## Specifications and approvals

Specifications	IEC 60664-1 IEC 61984
Approvals	DNV GL

## Commercial data

Packaging size	1
Net weight	90.4 g
Country of origin	Germany
European customs tariff number	85366990
GTIN	5713140051423
eCl@ss	27440205 Contact insert for industrial connectors