

## Han F+B 4/4-M

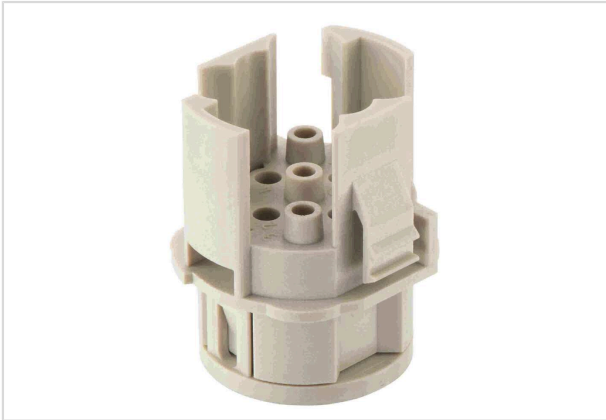


Image is for illustration purposes only. Please refer to product description.

Part number	09 15 508 3001
Specification	Han F+B 4/4-M
HARTING eCatalogue	<a href="https://b2b.harting.com/09155083001">https://b2b.harting.com/09155083001</a>

### Identification

Category	Inserts
Series	Han <sup>®</sup> F+B

### Version

Termination method	Crimp termination
Gender	Male
Number of contacts	8
Number of signal contacts	4
Number of power contacts	4
PE contact	Yes
Details	Please order crimp contacts separately. 4x Han E <sup>®</sup> 4x Han D <sup>®</sup>

Details

The connector series Han<sup>®</sup> F+B equipped with all contacts may be used for voltages up to 400 V, pollution degree 3. A modified contact loading arrangement only with 4 + PE Han E<sup>®</sup> power contacts permits use up to 500 V also in the same pollution degree.

### Technical characteristics

Conductor cross-section	0.14 ... 4 mm <sup>2</sup>
Rated current (signal)	10 A
Rated voltage (signal)	250 V
Rated impulse voltage (signal)	4 kV
Pollution degree (signal)	3



Pushing Performance  
Since 1945

## Technical characteristics

Rated current (power)	20 A
Rated voltage (power)	400 V
Rated impulse voltage (power)	6 kV
Pollution degree (power)	3
Insulation resistance	$>10^{10} \Omega$
Limiting temperature	-40 ... +125 °C
Mating cycles	$\geq 500$
Mating cycles with other HMC components	$\geq 3,000$

## Material properties

Material (insert)	Polycarbonate (PC)
Colour (insert)	RAL 7032 (pebble grey)
Material flammability class acc. to UL 94	V-0
RoHS	compliant
ELV status	compliant
China RoHS	e
REACH Annex XVII substances	Not contained
REACH ANNEX XIV substances	Not contained
REACH SVHC substances	Not contained
Fire protection on railway vehicles	EN 45545-2 (2020-08)
Requirement set with Hazard Levels	R22 (HL 1-3) R23 (HL 1-3)

## Specifications and approvals

UL / CSA	UL 2237 PVVA2.E318390
----------	-----------------------

## Commercial data

Packaging size	1
Net weight	10.88 g
Country of origin	Germany
European customs tariff number	85389099
GTIN	5713140023659
eCl@ss	27440205 Contact insert for industrial connectors