

## Han Ex Q12 Kit HBM angled/HTE-M20

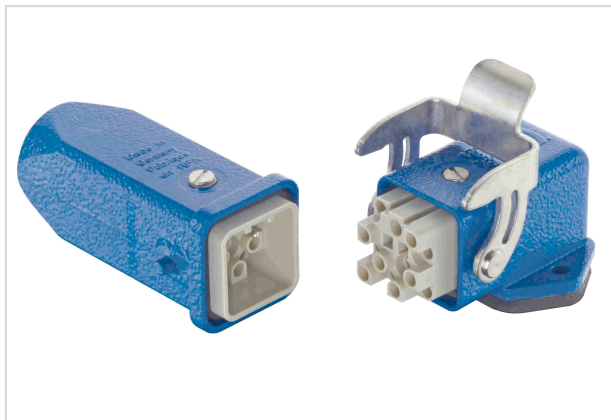


Image is for illustration purposes only. Please refer to product description.

Part number	10 36 012 0003
Specification	Han Ex Q12 Kit HBM angled/HTE-M20
HARTING eCatalogue	<a href="https://b2b.harting.com/10360120003">https://b2b.harting.com/10360120003</a>

### Identification

Category	Connector sets
Series	Han <sup>®</sup> Q
Series of hoods/housings	Han <sup>®</sup> Ex
Element	Complete set

### Version

Termination method	Crimp termination
Size	3 A
Number of contacts	12
PE contact	Yes
Version	Top/side entry
Cable entry	1x M20
Locking type	Single locking lever
Field of application	Connectors for explosion hazardous environments
Details	Please order crimp contacts separately.

### Technical characteristics

Rated current	10 A
Rated voltage	90 V
Insulation resistance	$>10^{10} \Omega$
Limiting temperature	-20 ... +40 °C
Mating cycles	$\geq 500$



Pushing Performance  
Since 1945

## Technical characteristics

Degree of protection acc. to IEC 60529 IP67 with seal screw 09 20 000 9918

## Material properties

Material (insert)	Polycarbonate (PC)
Material (hood/housing)	Zinc die-cast
Surface (hood/housing)	Powder-coated
Colour (hood/housing)	RAL 5015 (sky blue)
Material (seal)	NBR
Material (locking)	Stainless steel
Material flammability class acc. to UL 94	V-0
RoHS	compliant with exemption
RoHS exemptions	6(c): Copper alloy containing up to 4 % lead by weight
ELV status	compliant with exemption
China RoHS	50
REACH Annex XVII substances	Not contained
REACH ANNEX XIV substances	Not contained
REACH SVHC substances	Yes
REACH SVHC substances	Lead
California Proposition 65 substances	Yes
California Proposition 65 substances	Lead
California Proposition 65 substances	Nickel
California Proposition 65 substances	Naphthalene

## Specifications and approvals

Specifications	IEC 60664-1
	IEC 61984
	IEC 60079-0
	EN 60079-11

## Commercial data

Packaging size	1
Net weight	150.78 g
Country of origin	Germany
European customs tariff number	85366990
GTIN	5713140189614



**Pushing Performance**  
Since 1945

## Commercial data

eCl@ss

27440101 Rectangular connectors (set)

---