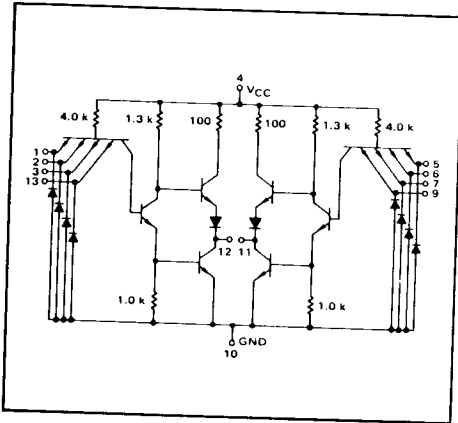


4-64

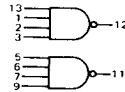
DUAL 4-INPUT "NAND" GATE

MTTL I MC500/400 series

MC500 · MC550
MC400 · MC450



This device consists of two 4 input NAND gates. The gates can be cross coupled to form a multiple-input R-S flip-flop or a circuit for eliminating contact bounce.



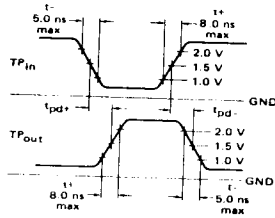
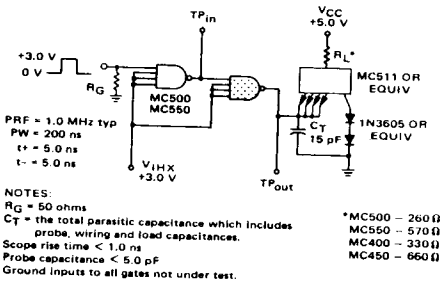
Positive Logic:
12 = $\overline{1 \cdot 2 \cdot 3 \cdot 4}$
Negative Logic:
12 = $\overline{1} \cdot \overline{2} \cdot \overline{3} \cdot \overline{4}$

Total Power Dissipation - 30 mW typ/pkg
Propagation Delay Time = 10 ns typ

TYPE NO.	INPUT LOADING FACTOR (I _I)	OUTPUT DRIVE (I _{OL})	TEMPERATURE RANGE
MC500 MC550	1 (-1.33 mA)	15 MC500 series Gates 7 MC500 series Gates (20 mA) 10 mA	-55°C to +125°C
MC400 MC450	1 (-1.66 mA)	12 MC400 series Gates (20 mA) 6 MC400 series Gates (10 mA)	0° to +75°C

SWITCHING TIME TEST CIRCUIT

VOLTAGE WAVEFORMS AND DEFINITIONS



486

486

