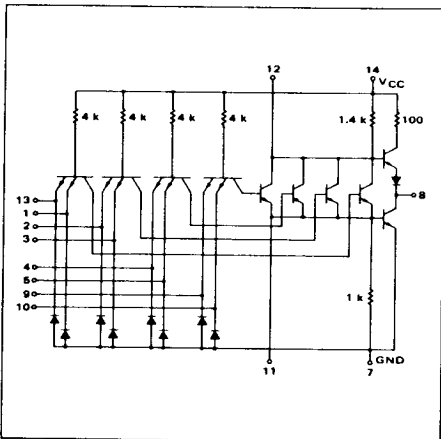


4-15

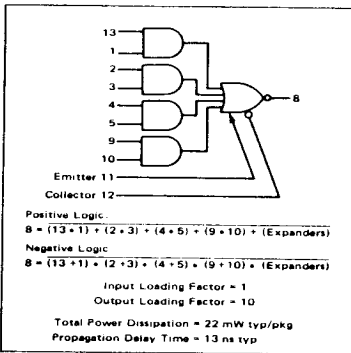
EXPANDABLE 4-WIDE 2-INPUT
"AND-OR-INVERT" GATE

MTTL MC7400P series
MTTL MC5400L/7400L series

MC5453L*
MC7453P,L*



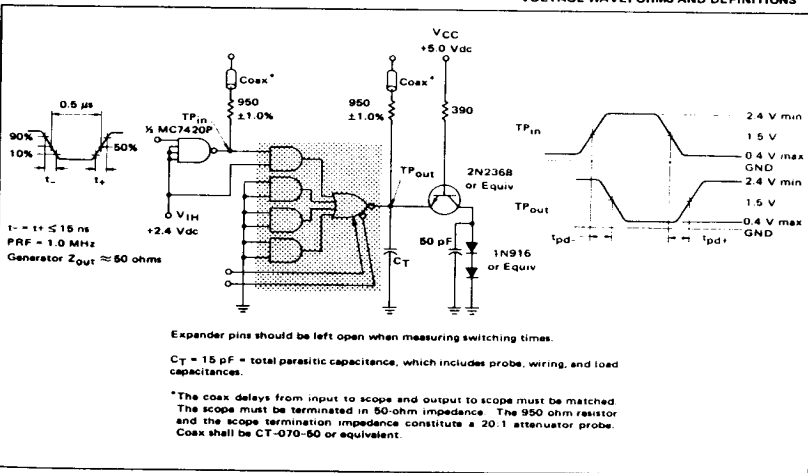
This device consists of four 2-input AND gates ORed together and inverted. Up to four MC5460/7460 expander gates may be ORed with the device at the expander points.



*L suffix = TO-118 ceramic package (Case 632)
 P suffix = TO-118 plastic package (Case 605)
 See General Information section for package outline dimensions.

SWITCHING TIME TEST CIRCUIT

VOLTAGE WAVEFORMS AND DEFINITIONS



388

388

FIGURE 1 - I_{EX} TEST CIRCUIT

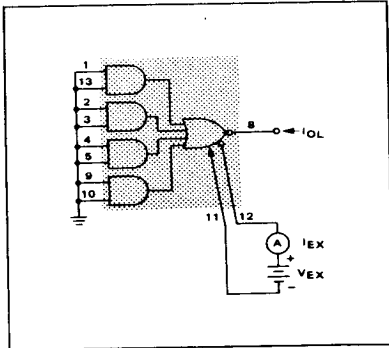


FIGURE 2 - V_{BE} TEST CIRCUIT

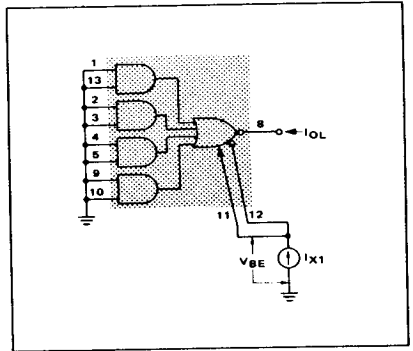


FIGURE 3 - V_{OL} TEST CIRCUIT

