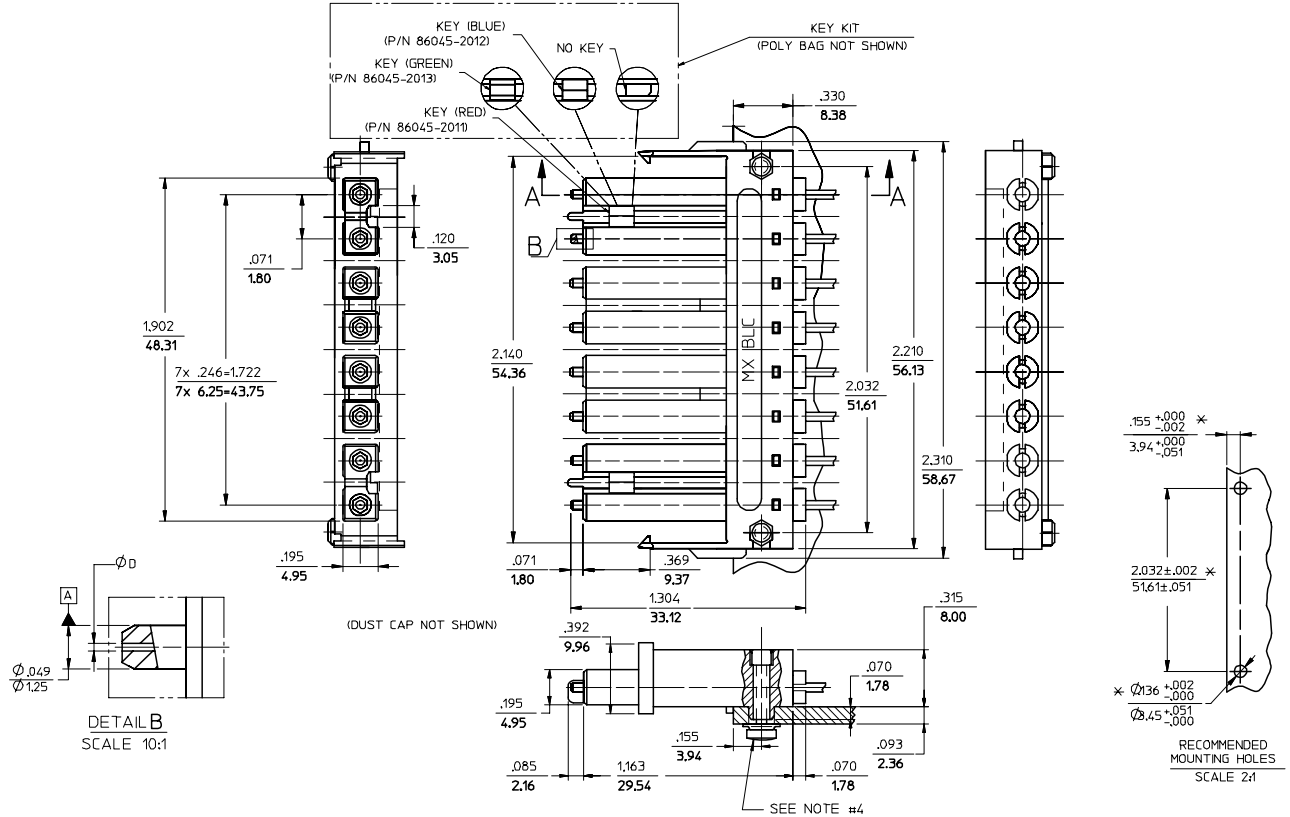


CONNECTOR P/N	ØD (H49)	CABLE TYPE
106046-2200	125.50	SINGLE MODE
106046-3000	127.00	MULTIMODE
106046-4200	125.00	SINGLE MODE
106046-5000	126.00	
106046-6200	125.25	



NOTES:

- ALL DIMENSIONS ARE FOR REFERENCE ONLY, EXCEPT WHEN MARKED WITH (*).
- KEYS ARE TO BE PACKAGED UNASSEMBLED WITH CONNECTOR IN POLY BAG.
- RECOMMENDED TORQUE TO ASSEMBLE THIS SCREW-21bf-in./- 10%

ENTER DESCRIPTION EC NO: MF2007-0349 DRAWN/REV: ZNER 2006/11/28 CHKD: 2006/11/28 APPR: I GUMIN 2006/12/04 REV: A1	QUALITY SYMBOLS ▽=0 ▽=0	GENERAL TOLERANCES (UNLESS SPECIFIED)		DIMENSION STYLE IN/MM		SCALE 4:1	DESIGN UNITS INCH	THIRD ANGLE PROJECTION																								
		<table border="1"> <thead> <tr> <th></th> <th>mm</th> <th>INCH</th> </tr> </thead> <tbody> <tr> <td>4 PLACES</td> <td>± ---</td> <td>± ---</td> </tr> <tr> <td>3 PLACES</td> <td>± ---</td> <td>± ---</td> </tr> <tr> <td>2 PLACES</td> <td>± ---</td> <td>± ---</td> </tr> <tr> <td>1 PLACE</td> <td>± ---</td> <td>± ---</td> </tr> </tbody> </table>			mm	INCH	4 PLACES	± ---	± ---	3 PLACES	± ---	± ---	2 PLACES	± ---	± ---	1 PLACE	± ---	± ---	<table border="1"> <tr> <td>DRAWN BY</td> <td>DATE</td> </tr> <tr> <td>PGIBLIN</td> <td>2005/10/20</td> </tr> <tr> <td>CHECKED BY</td> <td>DATE</td> </tr> <tr> <td>APPROVED BY</td> <td>DATE</td> </tr> </table>		DRAWN BY	DATE	PGIBLIN	2005/10/20	CHECKED BY	DATE	APPROVED BY	DATE	TITLE BLC CONN.125.5,HGH.PREC, (8 POSITION)			
			mm	INCH																												
		4 PLACES	± ---	± ---																												
3 PLACES	± ---	± ---																														
2 PLACES	± ---	± ---																														
1 PLACE	± ---	± ---																														
DRAWN BY	DATE																															
PGIBLIN	2005/10/20																															
CHECKED BY	DATE																															
APPROVED BY	DATE																															
ANGULAR ±1/2°				MATERIAL NO. SEE TABLE		DOCUMENT NO. SD-106046-XXX0		SHEET NO. 1 OF 01																								

DRAFT WHERE APPLICABLE MUST REMAIN WITHIN DIMENSIONS

THIS DRAWING CONTAINS INFORMATION THAT IS PROPRIETARY TO MOLEX INCORPORATED AND SHOULD NOT BE USED WITHOUT WRITTEN PERMISSION