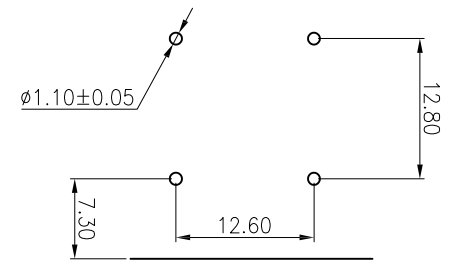
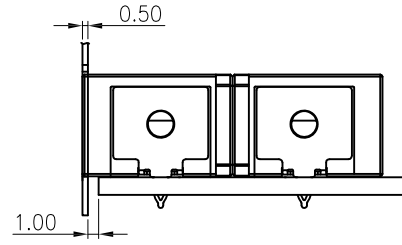
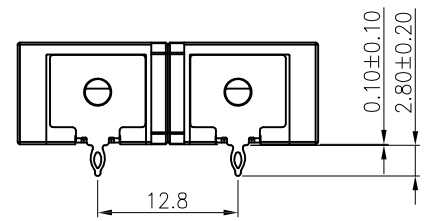
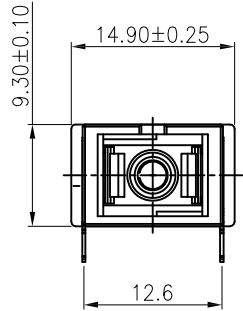
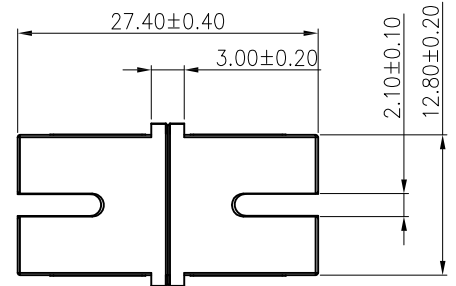
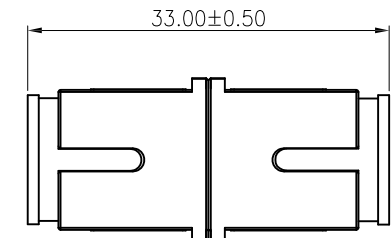


APPROVED: _____
 DATE: _____ TITLE: _____

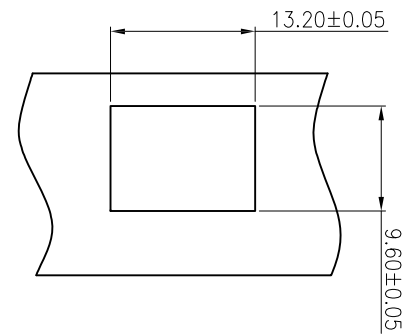
Rev	AWO #	Description	Date	Appr
-		RELEASED	9/8/20	



RECOMMENDED PCB LAYOUT



WITH DUST CAP



SPECIFICATIONS:

Material:
 Housing: PBT, rated UL 94V-0, Color: See Chart
 Cap: PBT, rated UL 94V-0, Color: Black
 Sleeve: Zirconia Ceramic
 Electrical:
 Standards of IEC, EIA/TIA, Telcordia
 Insertion loss: 0.2dB max
 Interchangeability: 0.2dB max
 Mechanism durability (500 cycles min): 0.2dB max
 Temperature Rating:
 Operating temperature: -40°C to +75°C
 Environmental:
 Lead free, RoHS compliant.



OPSA1BNPC1N1	SC/APC, TWO TYPE DUST CAP	7737C Green	PBT Black
OPSB1BNPC1N1	SC/PC, TWO TYPE DUST CAP	2184C Blue	PBT Black
PART NUMBER	DESCRIPTION	Housing&Insert color	Cap Color

UNLESS OTHERWISE SPECIFIED ALL DIMENSIONS ARE MILLIMETERS TOLERANCES: EXCEPT AS NOTED		
MM	ANGLE	
X. ± 0.35	X. ± 2°	
.X ± 0.30	.X ± 1°	
.XX ± 0.25	.XX ± 0.5°	
.XXX ± 0.15	.XXX ± 0.5°	
APPROVALS		DATE
DRAWN	LH	9/7/20
CHECKED	JL	9/7/20
APPROVED		

ADAM TECH INTERCONNECTS 909 Rahway Avenue,
 Union, NJ 07083
 Phone: 908-687-5000
 Fax: 908-687-5710

TITLE
 SC TYPE ADAPTER, APC&PC, 1 PORTS, SHORT-EARS,
 WITH SC TWO TYPE DUST CAP, WITH PRESS FIT PIN

SIZE	PART NO.	REV.
X	OPSX1BNPC1N1	-
REF:	S00005C	SCALE: NTS
		SHEET 1 OF 1

6 5 4 3 2 1

6 5 4 3 2 1

D

D

C

C

B

B

A

A