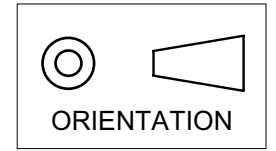


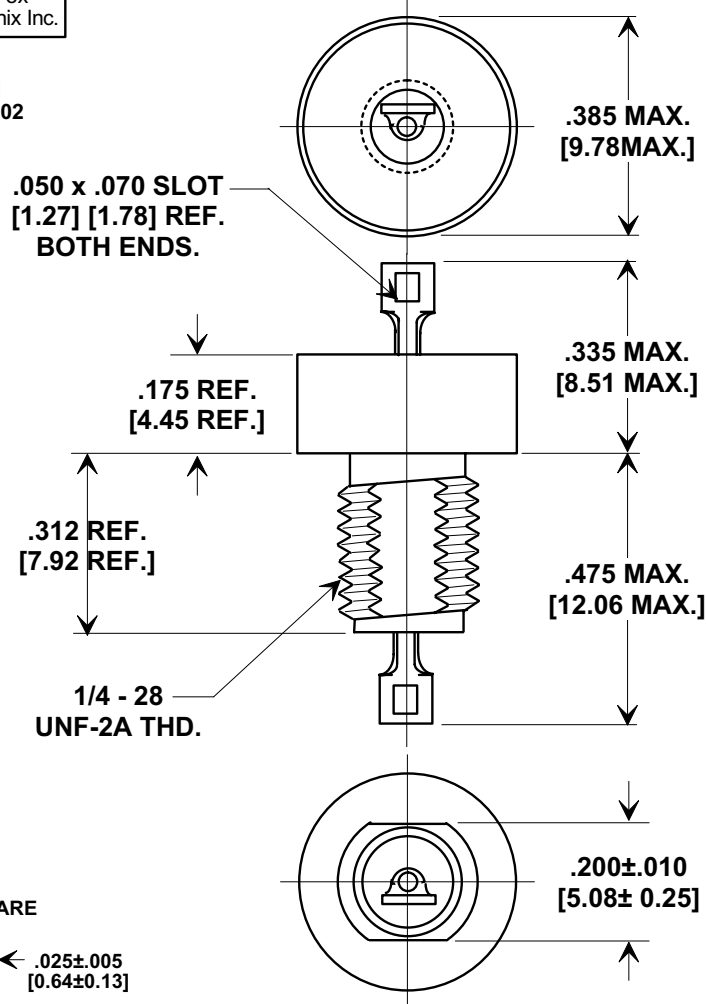
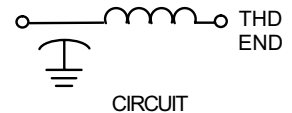
This drawing is the property of Tusonix, Inc., and may not be used, reproduced, published or disclosed to others without expressed authorization by Tusonix Inc.

Electrical Testing
per Tusonix standard
test plans and Mil-Std-202
Test Methods.

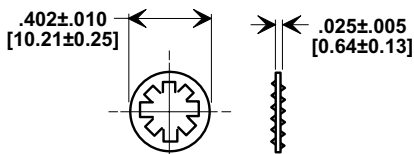
MARKETING SALES DRAWING
DIMENSIONS IN INCHES - DO NOT SCALE THIS DRAWING
DIMENSIONS IN METRIC - []



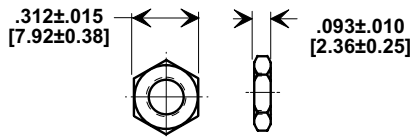
L TYPE



MOUNTING HARDWARE



LOCK WASHER



HEX NUT

NOTES:

1. TUSONIX STANDARD PART NUMBER: 4601-052. TUSONIX RoHS COMPLIANT PART NUMBER: 4601-052 LF. CUSTOMER MUST SPECIFY STANDARD OR RoHS PART NUMBER WHEN ORDERING.
2. MATERIALS: BUSHING - TIN PLATED STEEL. TOP SEAL FINISH: STANDARD PART #: 60/40 SOLDER PLATED. RoHS PART #: MATTE TIN PLATED. LEAD STANDARD PART: SILVER PLATED COPPER. NUT - TIN PLATED BRASS. L"WASHER - TIN PLATED PHOSPHOR BRONZE.
3. PART MARKING: TRADEMARK AND VARIATION NUMBER. STANDARD PART: BLACK INK. RoHS PART: GREEN INK.
4. MOUNTING TORQUE: 8 lb - ins. max.
5. SEAL TESTED PER MIL-STD-202 METHOD 112 CONDITION A.
6. DCR - .01 Ω max.
7. MAX. SOLDER TEMPERATURE 500°F.

MIN. CAP. (μF)	WORKING VOLTAGE DC		CURRENT D.C.	I.R. MIN.	D.W.V.	MINIMUM NO LOAD INSERTION LOSS (dB) AT 25°C PER MIL-STD-220						TEMPERATURE CHARACTERISTIC
	85°C	125°C				30 KHz	100 KHz	300 KHz	1 MHz	10 MHz	1 GHz	
1.4	100	70	15 A	500 M Ω	125 VDC	15	25	34	44	60	70	X7W

X-2015 Rev-0

REVISION RECORD	0	WORKING VOLTAGE REV'D 100, 70 WERE .80, .50 & TEMP. CHARAC. ADDED	1	ADDED AND REVISED NOTES. S.M. 01-25-06	2	20060123-2-02	--TOLERANCES-- Unless Otherwise Specified	Title COAXIAL BROADBAND - "L" HERMETICALLY SEALED			
	Original Release C.O. 20020607-3-01						DECIMAL ± // //	Drawn	S.M. 06-10-02	Scale	X 3
	WORKING VOLTAGE REV'D 100, 70 WERE .80, .50 & TEMP. CHARAC. ADDED						ANGLES ± // //	Approved	B.Mc 06-10-02		
	20020903-1-03						TUSONIX TUCSON, ARIZONA	A	4601-052		