

Advanced Information

Advanced Digital Video Encoder

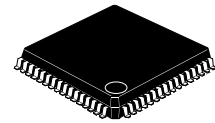
Y/Cb/Cr R/G/B Output Support

HCMOS Technology

MC44724A
MC44725A

The MC44724A and MC44725A are advanced Digital Video Encoders (DVE). They convert ITU-601/656 standard 4:2:2 Bit-Parallel data into analog composite video, S-Video or analog component signals Y/Cb/Cr or R/G/B in PAL and NTSC formats. They accept the multiplexed two 8-bit or 16-bit ((CB,Y,CR)Y) signals from digital sources such as MPEG decoders and can act as a sync generator master or as a sync slave. All video processing is done digitally and requires no external adjustment.

Specifically designed for digital satellite, digital cable decoders, multimedia terminals and DVD players.



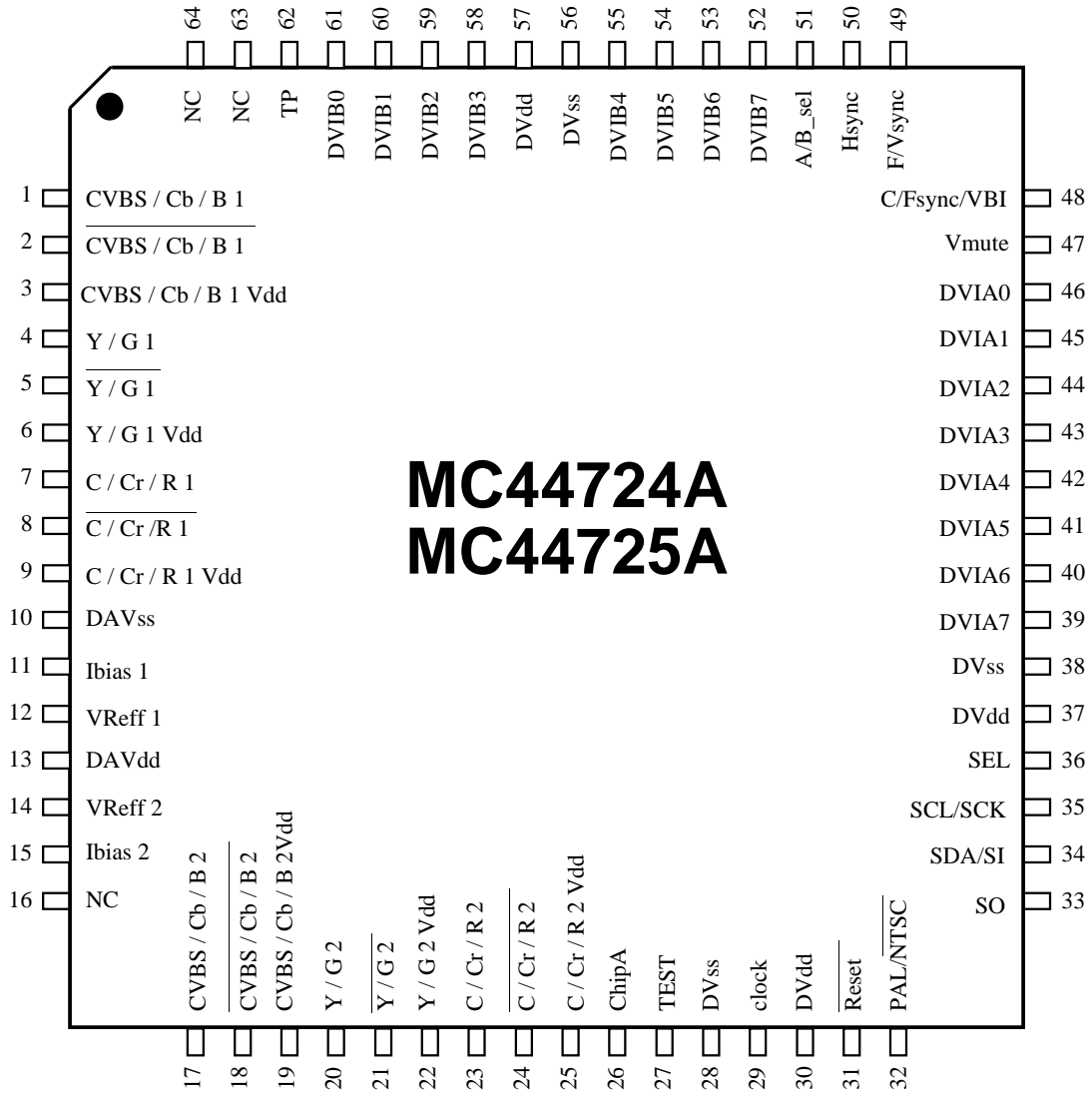
VFU SUFFIX
64 VQFP
(0.5mm Pitch)

- World Wide Operation (PAL-BDGHI, PAL-N,PAL-M, NTSC-M)
- SMPTE 170M / ITU - R 624 composite video output
- Programmable Color Sub-carrier Frequencies
- Analog standard timing for Horizontal, Vertical, Frame and Composite Sync Outputs
- Sync Extraction From Digital Input Data (SAV, EAV)
- Sync Polarity and Horizontal / Vertical Phase Control
- Master or Slave Sync (H/Vsync, H/Fsync, ITU-R656 Slave) Operation
- Interlaced or Non-Interlaced Support
- 625/50 or 525/60 ITU-601/656 two 8-bit or 16-bit ((CB,Y,CR)Y) Digital Input
- Luma 2X / Chroma 4X Output interpolating Filter
- Dual Digital A / B selectable inputs
- External VBI Information Data Input (Teletext Information Data)
- Selectable Two sets of Signals within (CVBS/Y/C) or (Y/Cb/Cr) or (R/G/B)
- Selectable Analog Component Output (Beta Cam or MII Component Interface Level)
- Six Analog Outputs Through 10-bit DACs
- Easily programmed via Serial Bus (I2C or 4-Wired SPI Bus)
- 2 Hardware selectable I2C Chip Addresses
- Closed-Caption, CGMS and WSS Information data Insertion
- MACROVISION ver. 7.01 Anti-Copy Signal Insertion(MC44724A Only)
- On Chip Color - bar Generator
- 5V Tolerante Input
- +3.3V Power Supply or +3.3V(Digital)/+5V(Analog) Power Supply
- Pin Compatible with MC44724/5

The MC44724A device is protected by U.S. patent number 4,631,603,4,577,216 and 4,819,098 and other intellectual property rights. The use of Macrovision's copy protection technology in the device must be authorized by Macrovision and is intended for home and other limited pay-per-view uses only, unless otherwise authorized in writing by Macrovision. Reverse engineering or disassembly is prohibited.



[Pin Assignment]



[Pin Descriptions]

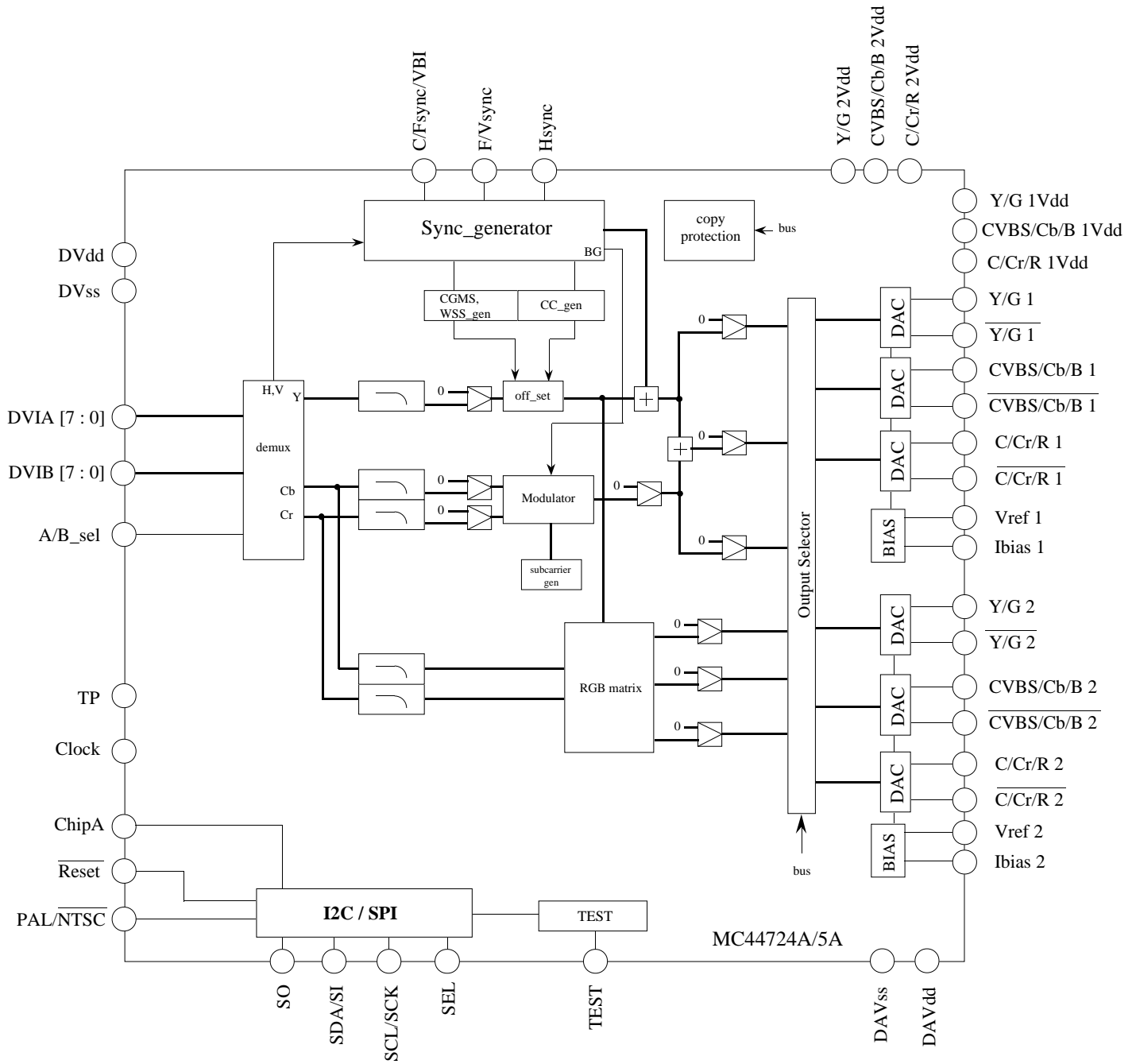
PIN	NAME	I/O	DESCRIPTIONS
1	CVBS/Cb/B 1	O	Analog composite video signal output or Cb or B signal output current drive(positive)
2	CVBS/Cb/B 1	O	Analog composite video signal output or Cb or B signal output current drive(negative)
3	CVBS/Cb/B1Vdd		Power Supply for CVBS / Cb / B DAC1 circuit
4	Y/G 1	O	Analog luminance or G signal output current drive(positive)
5	Y/G 1	O	Analog luminance or G signal output current drive(negative)
6	Y/G 1Vdd		Power Supply for Y / G DAC1 circuit
7	C/Cr/R 1	O	Analog chrominance signal output or Cr or R signal output current drive(positive)
8	C/Cr/R 1	O	Analog chrominance signal output or Cr or R signal output current drive(negative)
9	C/Cr/R 1Vdd		Power Supply for C / Cr /R DAC1 circuit
10	DAVss		Ground for DAC circuit
11	Ibias 1	O	Reference current for the 1st set of 3 DACs
12	Vref 1		Reference full scale voltage for the 1st set of 3 DACs
13	DAVdd		Power Supply for the DACs
14	Vref 2		Reference full scale voltage for the 2nd set of 3 DACs
15	Ibias 2	O	Reference current for the 2nd set of 3 DACs
16	NC		No Connect to pin
17	CVBS/Cb/B 2	O	Analog composite video signal output or Cb or B signal output current drive(positive)
18	CVBS/Cb/B 2	O	Analog composite video signal output or Cb or B signal output current drive(negative)
19	CVBS/Cb/B2Vdd		Power Supply for CVBS / Cb / B DAC2 circuit
20	Y/G 2	O	Analog luminance or G signal output current drive(positive)
21	Y/G 2	O	Analog luminance or G signal output current drive(negative)
22	Y/GVdd		Power Supply for Y / G DAC2 circuit
23	C/Cr/R 2	O	Analog chrominance signal output or Cr or R signal output current drive(positive)
24	C/Cr/R 2	O	Analog chrominance signal output or Cr or R signal output current drive(negative)
25	C/Cr/R 2Vdd		Power Supply for C / Cr /R DAC2 circuit
26	ChipA		I2C chip address select { 0 : 40(hex)/41(hex) 1 : 1D(hex)/1E(hex) }
27	TEST	I	TEST pin(Grounded)
28	DVss		Ground for Digital circuit
29	CLOCK	I	27MHz clock input
30	DVdd		Power Supply for Digital circuit
31	Reset	I	Reset signal, active LOW
32	PAL/NTSC	I	NTSC/PAL select . This pin is sampled only at Reset. (NTSC : Low PAL : High)
33	SO	z(O)	In SPI mode, serial data output / In I2C mode, Grounded
34	SDA/SI	I/O(I)	Serial data input, Open drain output / If SPI mode, serial data input
35	SCL/SCK	I	Serial clock
36	SEL	I/ (I)	Connect to Ground / If SPI mode, this pin is chip select
37	DVdd		Power Supply for Digital circuit
38	DVss		Ground for Digital circuit
39~46	DVIA7~0	I/O	8-bit Multiplexed 4:2:2 data(ITU Rec656/601) input (DVIA), or Multiplexed Y data (ITU Rec656/601) input in 16-bit input mode
47	Vmute	I	Video mute on Reset (0: nomal, 1: mute)
48	C/Fsync/VBI	I/O	Csync/Frame sync output, or external VBI information input
49	F/Vsync	I/O	Frame sync or Vertical sync input/output
50	Hsync	I/O	Horizontal sync input/output
51	A/B_sel	I	Switch control for 8-bit X 2 Multiplexed 4:2:2 data(ITU Rec656/601) input (DVIA) or (DVIB)
52~55	DVIB7~4	I/O	8-bit Multiplexed 4:2:2 data(ITU Rec656/601) input (DVIB), or Multiplexed Cr/Cb data (ITU Rec656/601) input in 16-bit input mode
56	DVss		Ground for Digital circuit
57	DVdd		Power Supply for Digital circuit
58~61	DVIB3~0	I/O	Multiplexed 4:2:2 data(ITU Rec656/601) input (DVIB), or Multiplexed Cr/Cb data (ITU Rec656/601) input in 16-bit input mode
62	TP	I/O	Test data input/output (Grounded)
63~64	NC		No connect to pin (Grounded)

Note : Power Supply Group

Digital ---> 30-pin, 37-pin, 57-pin

Analog ---> 3-pin, 6-pin, 9-pin, 13-pin, 19-pin, 22-pin, 25-pin

[Block Diagram]



I2C/SPI chip-address 40/41(hex)
 1D/1E(hex)

[Function Descriptions]

Clock

27.0MHz. This signal on the clock pin needs to be active and stable for 5 cycles before the reset pin is de-asserted.

Reset Procedure

RESET is a level sensitive input pin. Driving the RESET pin low causes a DVE reset. The 27Mhz DVE clock signal must be active before RESET is released. De-asserting reset will latch the status of the PAL/NTSC, Vmute and SEL pins.

The PAL/NTSC pin determines the default values for the DVE control registers. The default register values have been chosen so that standard PAL or NTSC video will appear at the DAC outputs immediately when a valid input digital video data stream is present and Vmute is Low at reset.

The Vmute pin controls the "out of reset" operation of the Analog output signals. When "1" at reset, the video output is muted - output signal is "black - sync". When "0" at reset, the video output is from the input video data. This control can be used to mute the disable noise signals from a MPEG decoder at reset until a clear and stable picture is available.

The value on the SEL pins determine the default serial communication mode. If Low, the DVE use I2C bus operation. If High, the DVE use 4-wired SPI operation.

After reset, the VBI signals (Closed-Caption, CGMS and WSS) are disabled.

(see page --- for sub-address register descriptions.)

Fig 1 : DVIA/DVIB Data Input Timing

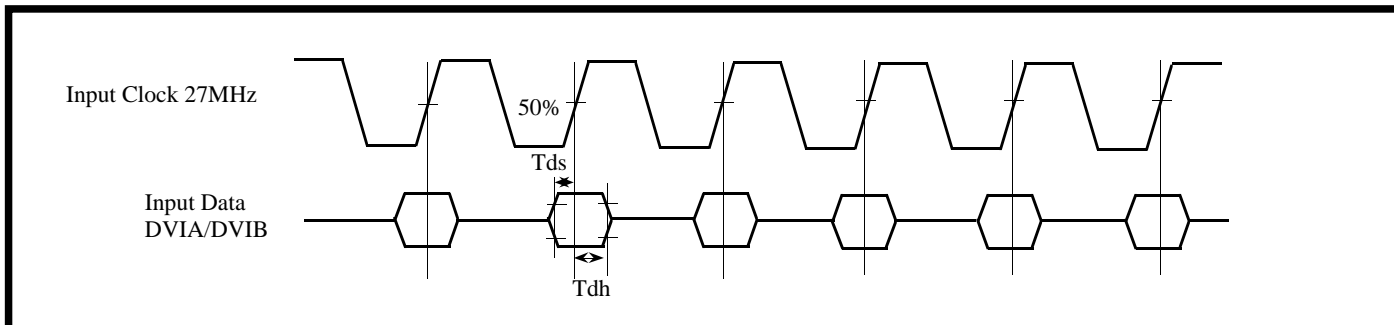
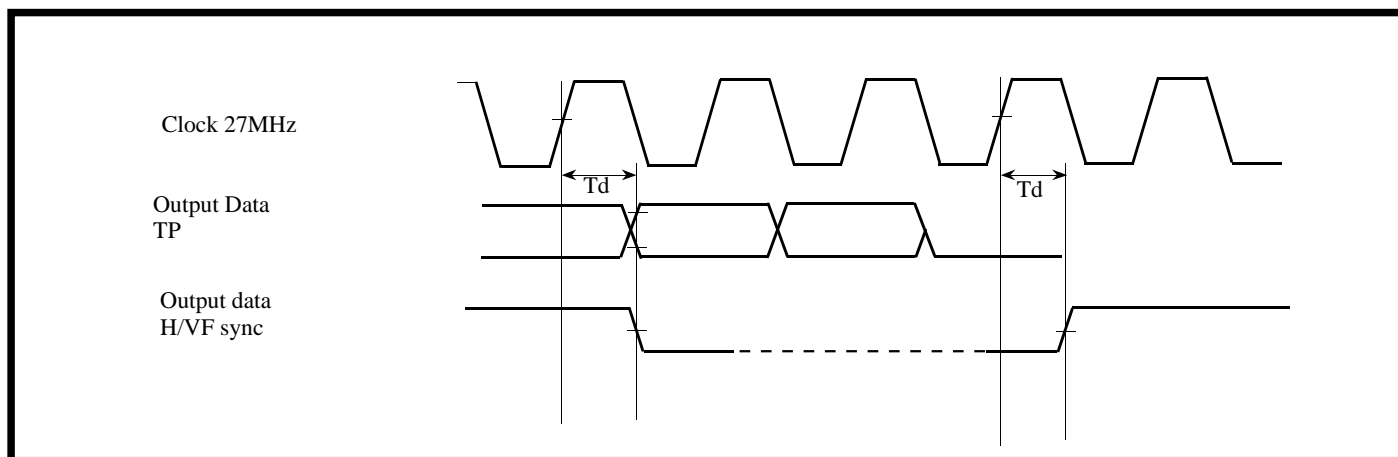


Fig 2 : Sync Data Output Timing



Input Data Format

The input digital video is in accord with the ITU-R Rec.656 and SMPTE 125M standards. It is two 8-bit or 16-bit multiplexed 4:2:2 ((CB,Y,CR)Y) data stream. Samples are latched on the rising edge of the clock signal. Data is input on pins **DVIA[7 : 0]** and **DVIB[7 : 0]** (see figures 3 and 4 for sub-address register descriptions.)

Video Timing / Sync Generator

The DVE outputs PAL-B,D,G,H,I, PAL-N, PAL-M or NTSC-M standard video signals.

The DVE sync generator can be operated in two sync modes, master or slave.

In master mode, the DVE generates all the correct Horizontal and Vertical or Frame sync signals internally, and outputs the Csync signal through the C/Fsync/VBI pin(C/Fsync).

In slave mode, the DVE derives the sync signals from the Bit-Parallel input data stream Start Active Video (SAV) and End Active Video (EAV) data packet information. Sync signals are output on the Hsync and F/Vsync or C/Fsync/VBI pins and can be programmed for positive or negative polarity. The phase of Hsync can also be controlled.

Also, the DVE allows more two slave modes. One is H/Vsync slave, and the another is H/Fsync slave mode.

Vertical Blanking corresponds to the following lines.

625/50 624-22 311-335 ITU-R line numbering
 525/60 1-19 264-282 SMPTE line numbering

(see figures 3,4,5,6,7,8,9,10, and 11 for sub-address register descriptions.)

Fig 3 : Digital Input Timing(525/60 system) in Master Mode

70(hex){[1:0]=01}

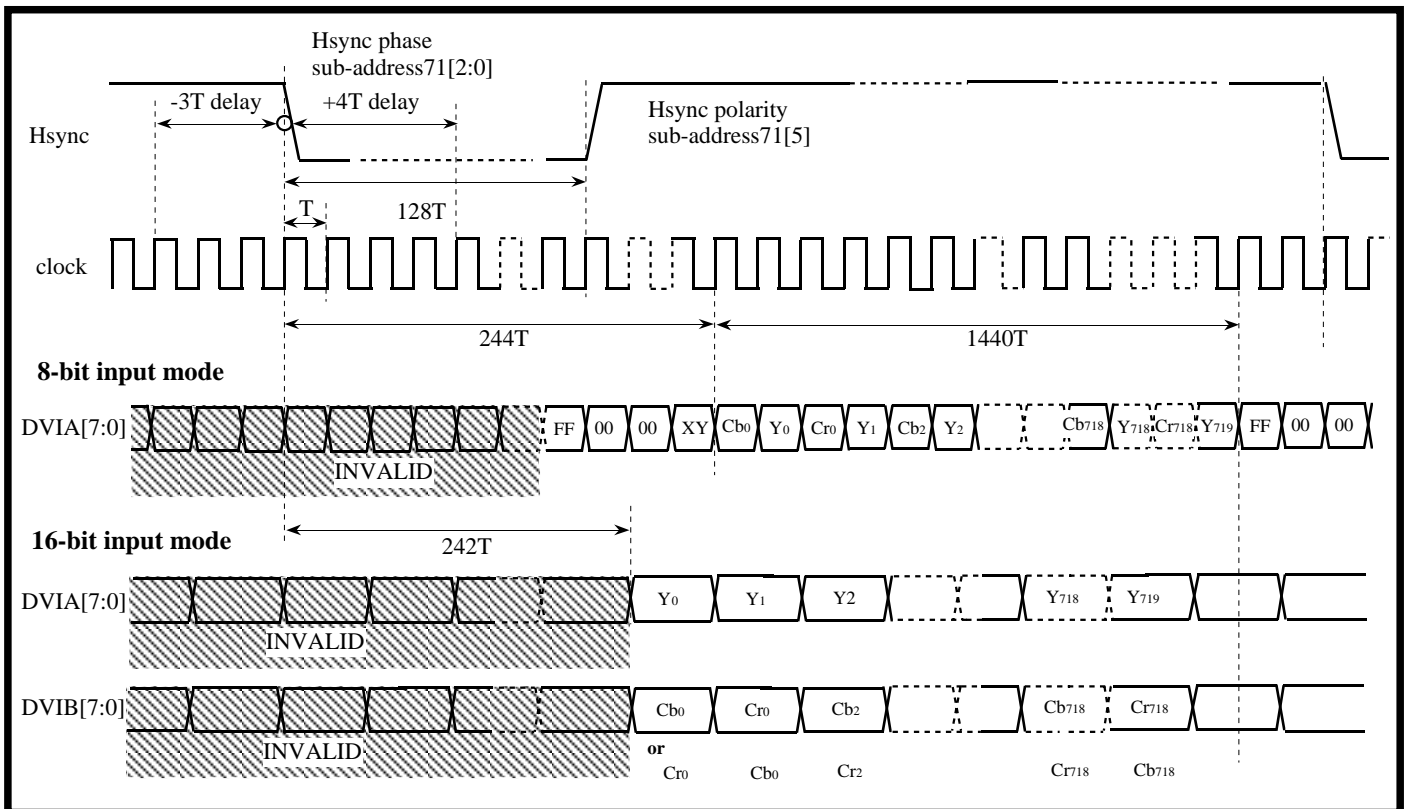


Fig 4 : Digital Input Timing(625/50 system) in Master Mode

70(hex){[1:0]=01}

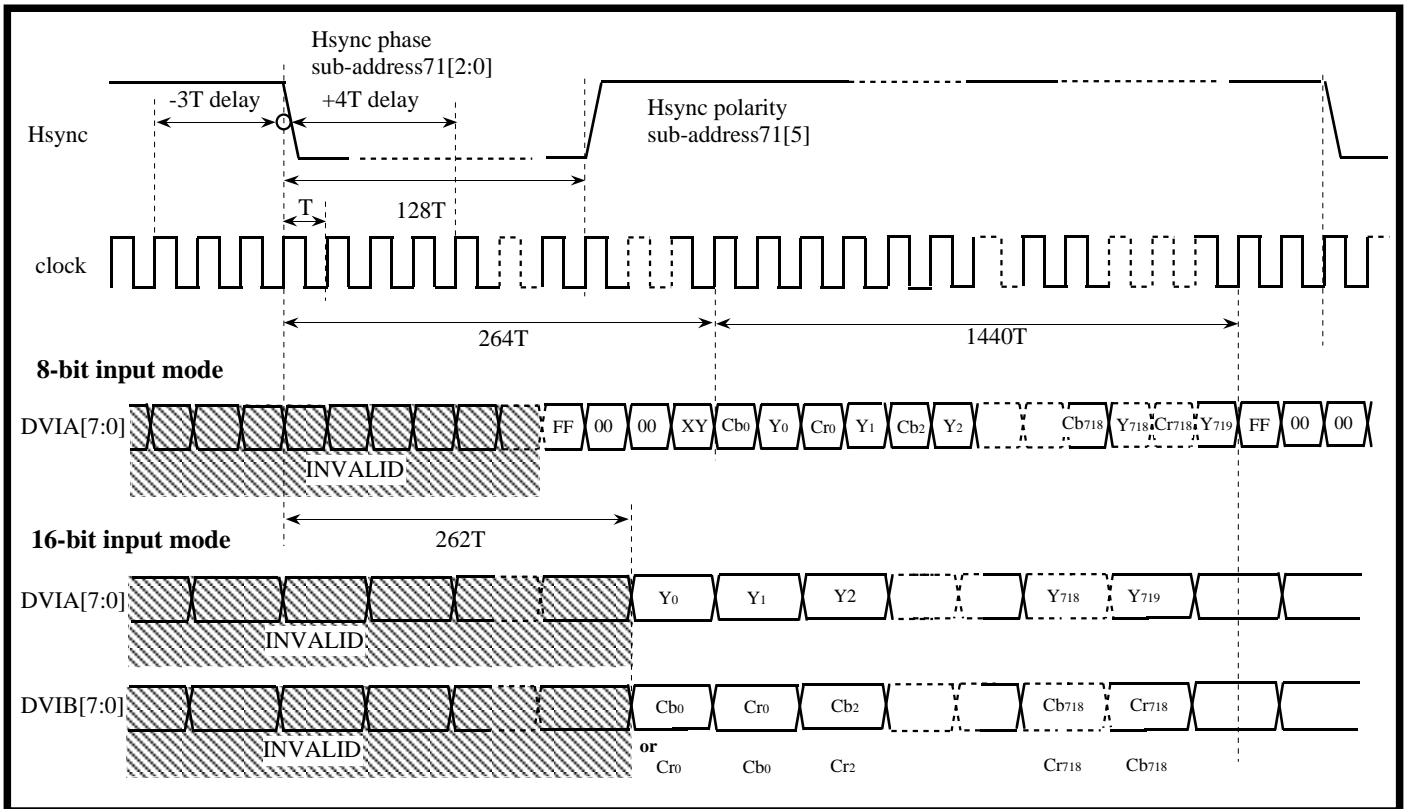
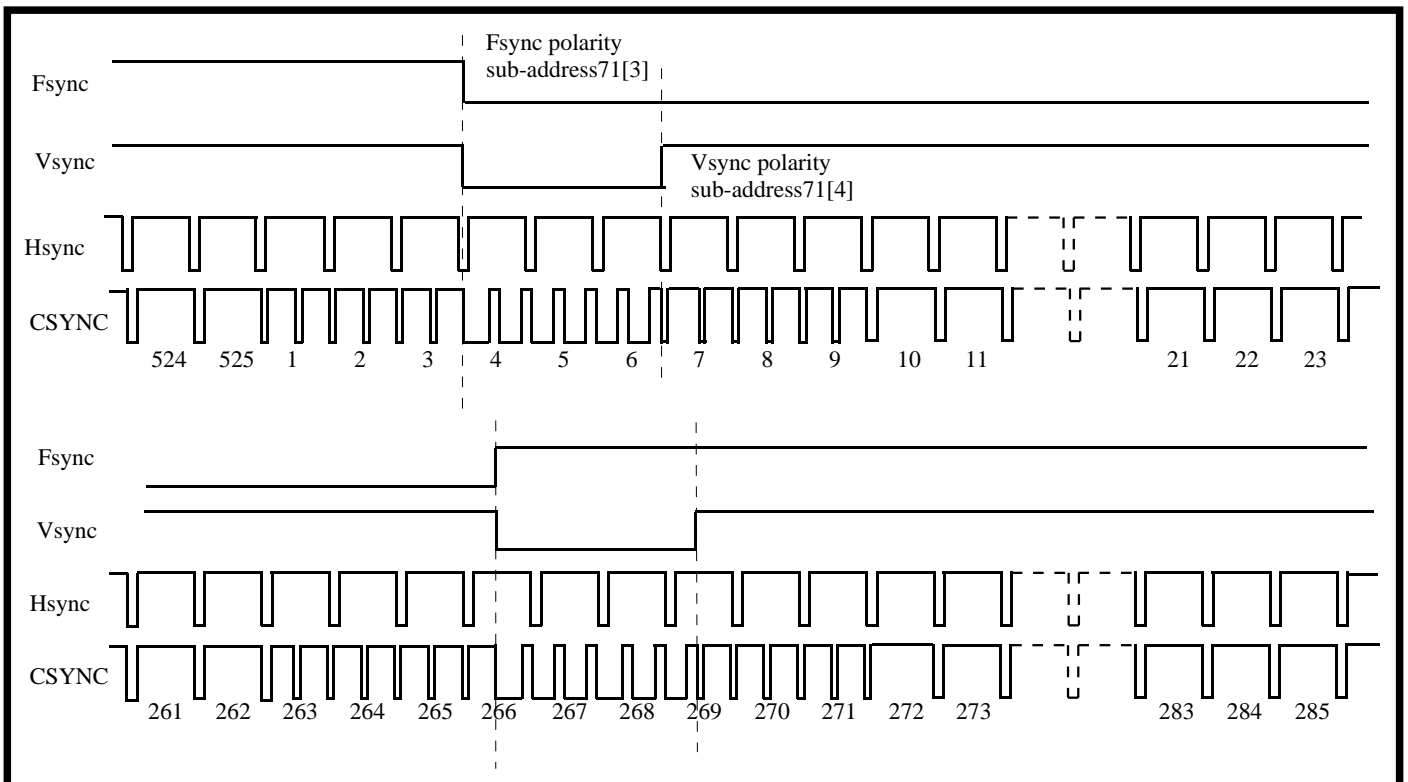


Fig 5 : Sync Timing::525/60 Interlaced System in Master Mode

sub-address71[7] =0



For More Information On This Product

Go to: www.freescale.com

MC44724A/5A Rev 0.05 07/15/98

This document contains information on a new product. Specifications and information herein are subject to change without notice.

Fig 6 : Sync Timing::625/50 Interlaced System in Master Mode

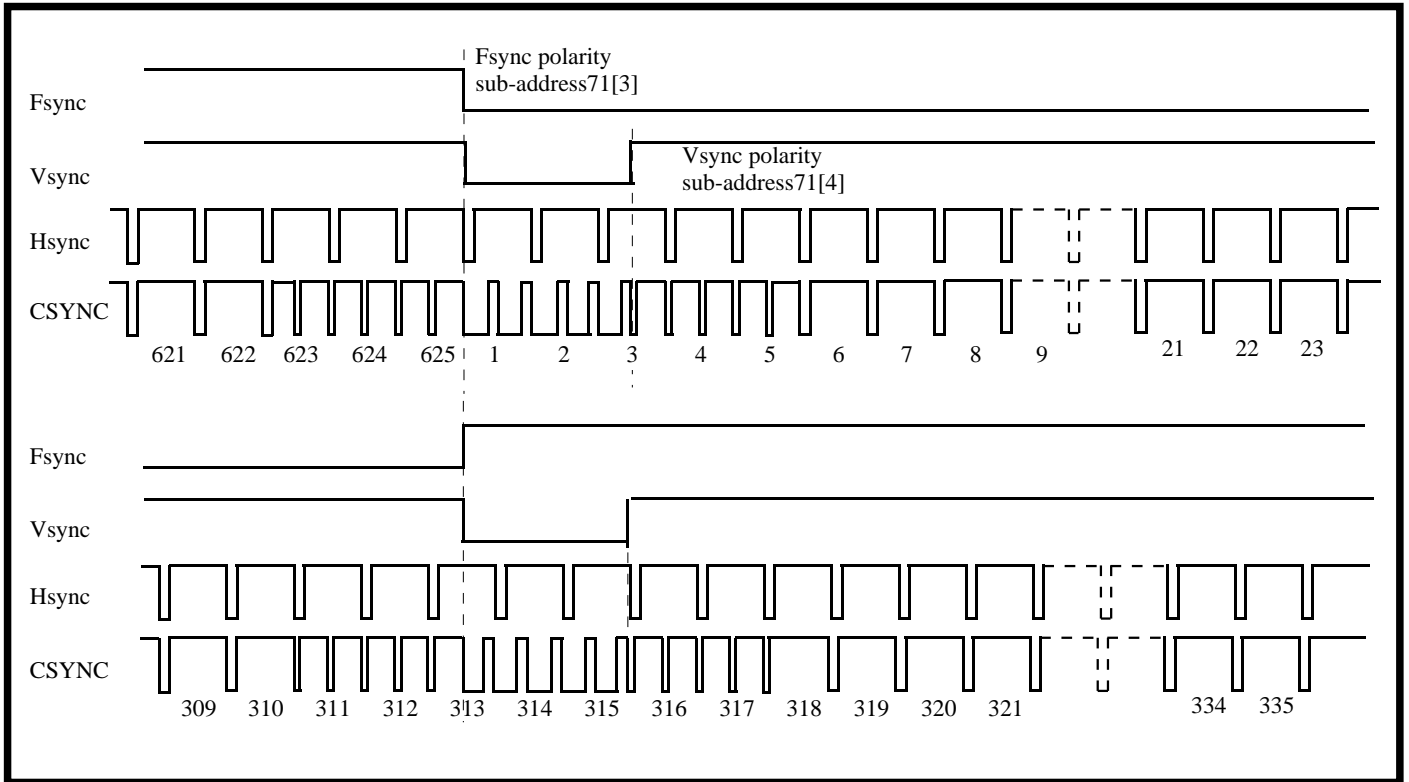


Fig 7 : Sync Timing::525/60 Non-interlaced System in Master Mode

sub-address71[7] =1

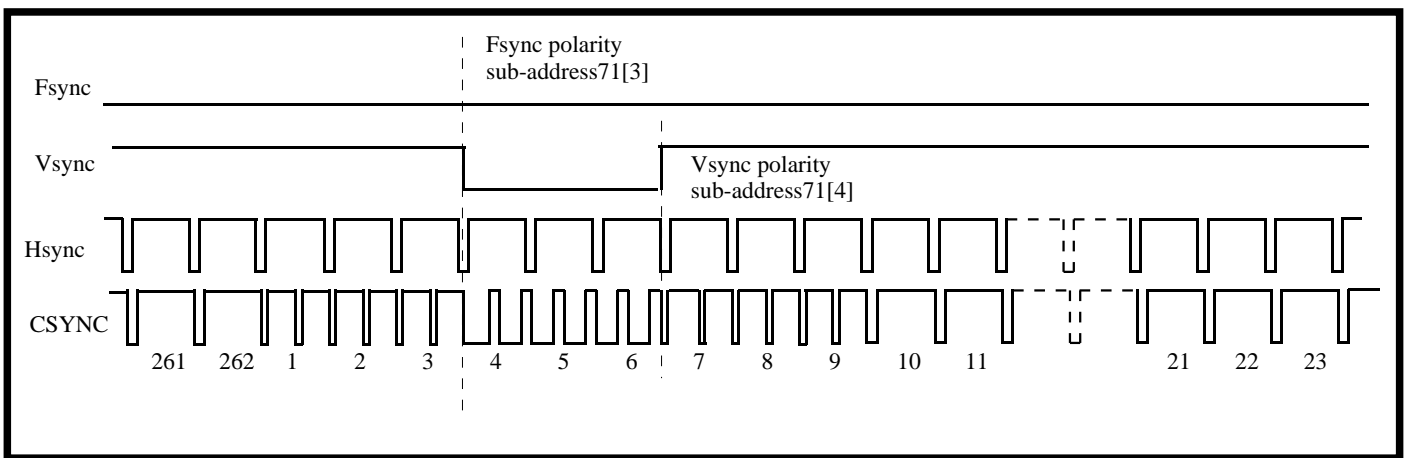
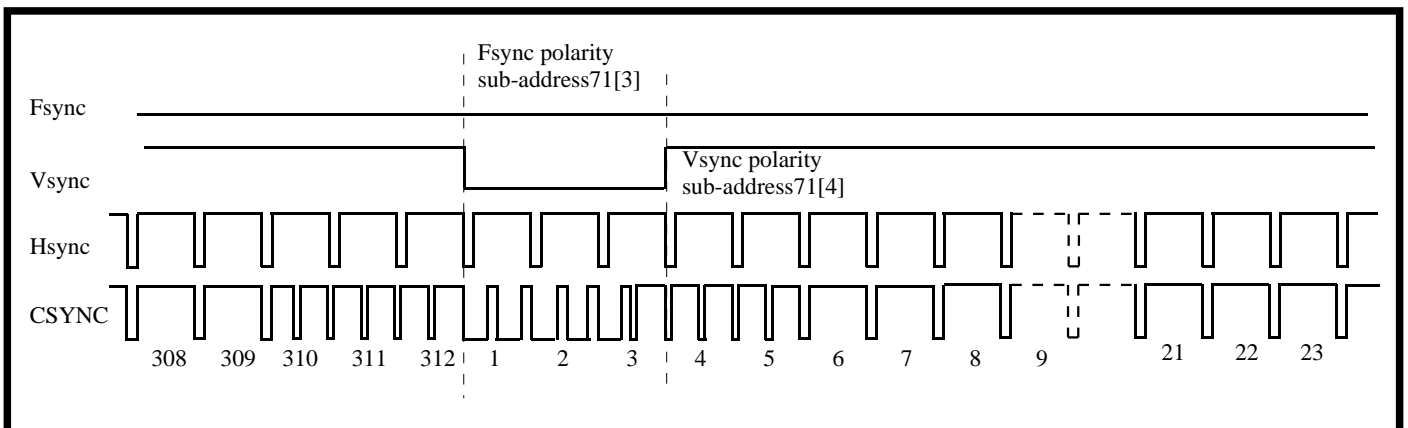


Fig 8 : Sync Timing::625/50 Non-interlaced System in Master Mode

sub-address71[7] =1



For More Information On This Product

Go to: www.freescale.com

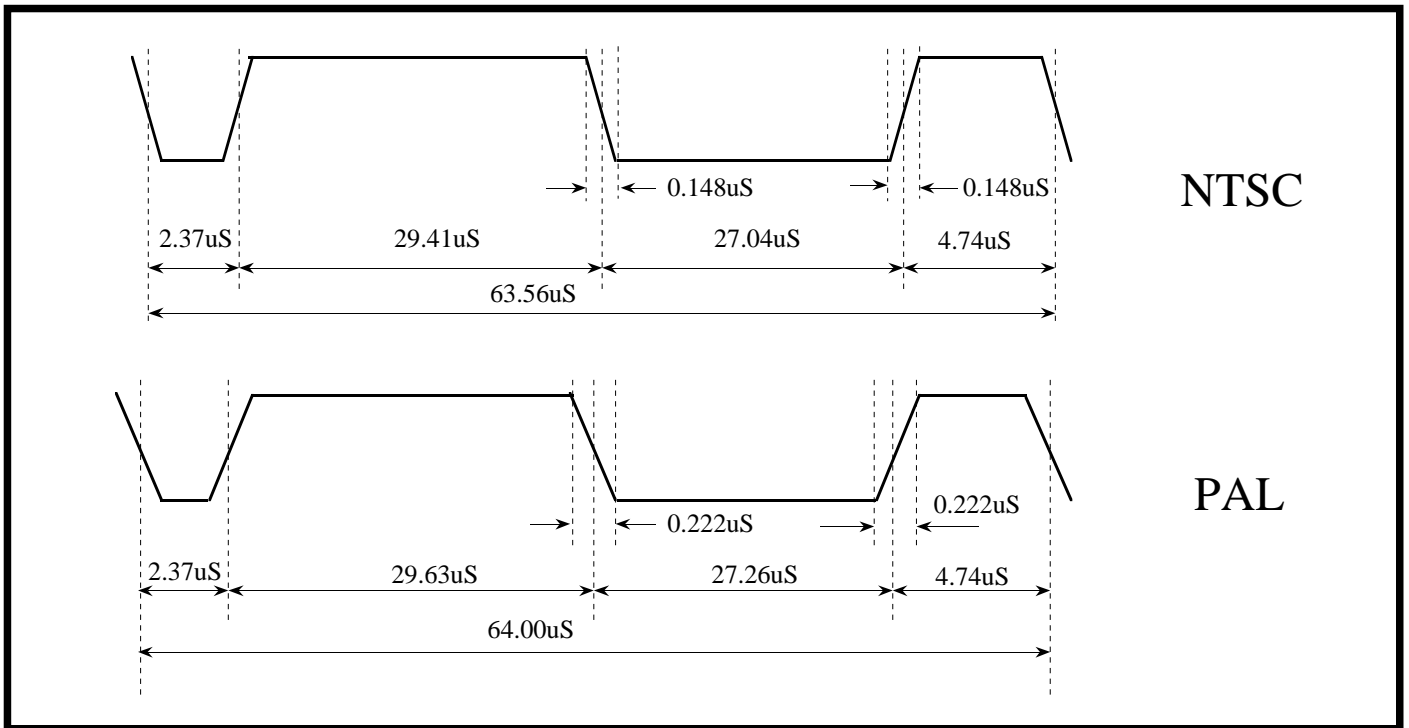
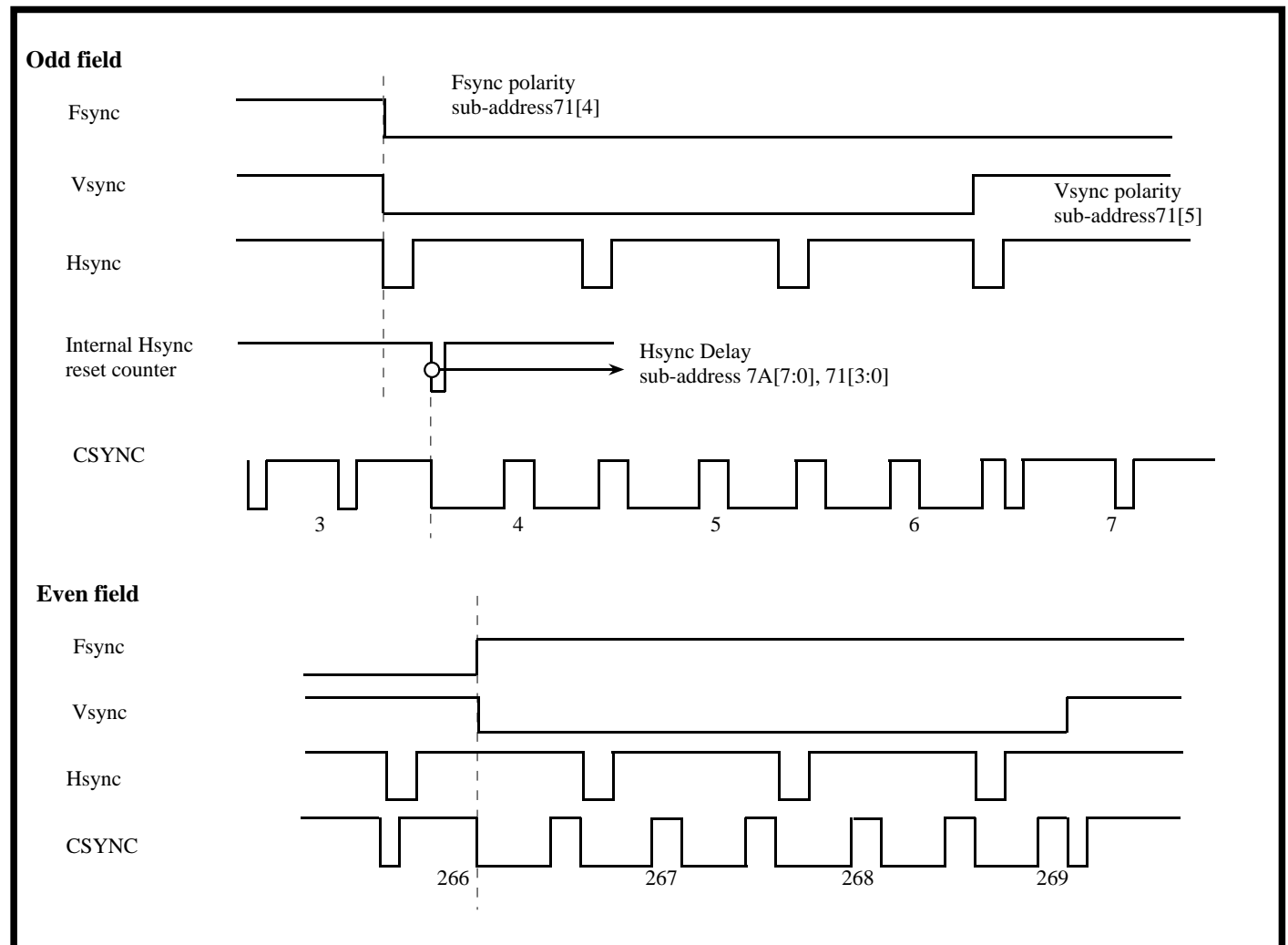


Fig 10 : Sync Timing::525/60 Interlaced System in Slave Mode

sub-address71[1:0] =10, 11



For More Information On This Product

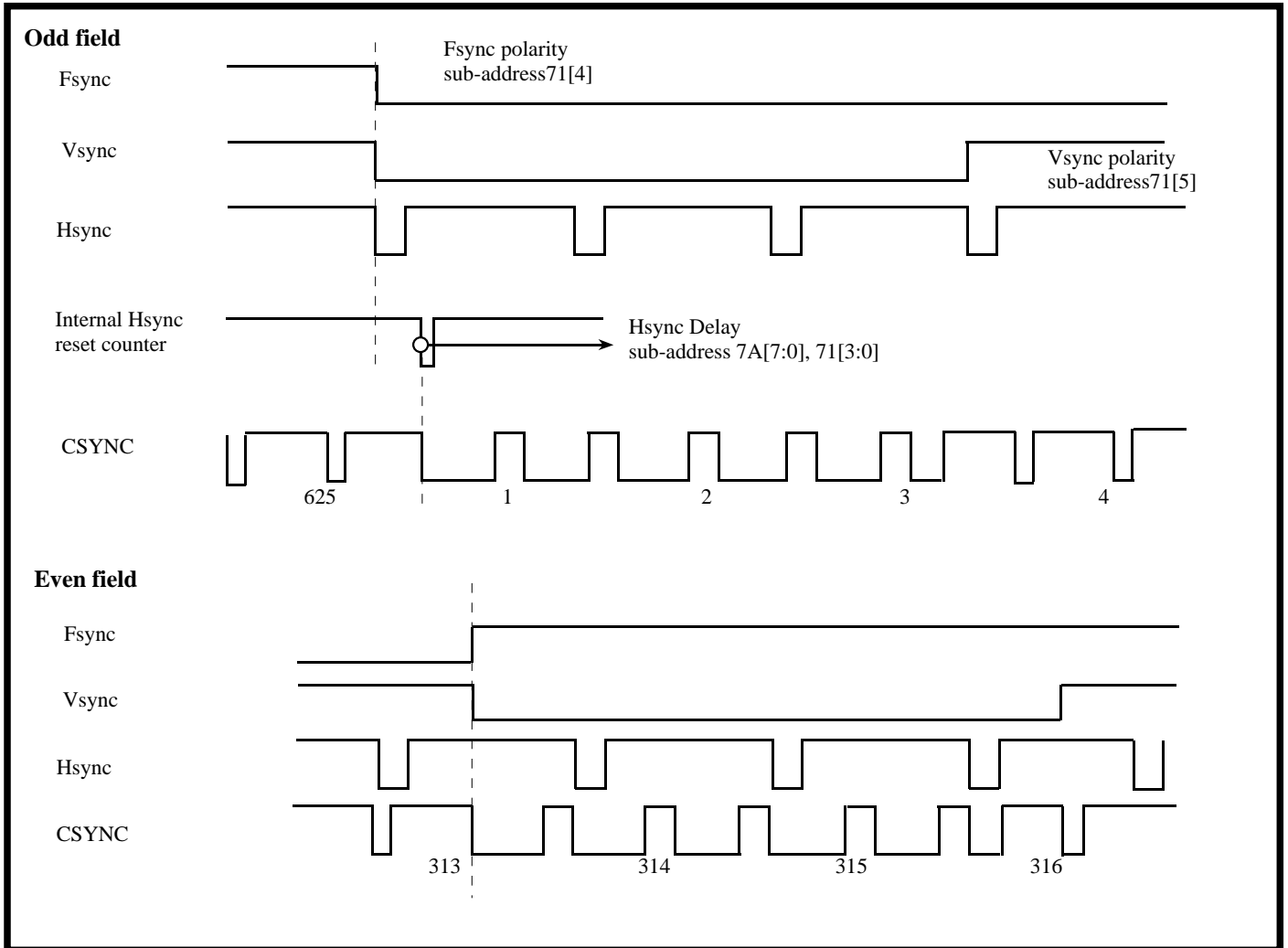
Go to: www.freescale.com

MC44724A/5A Rev 0.05 07/15/98

This document contains information on a new product. Specifications and information herein are subject to change without notice.

Fig 11 : Sync Timing::625/50 Interlaced System in Slave Mode

sub-address71[1:0] =10, 11



Chroma / Luma Encoding

The DVE de-multiplexes the 4:2:2 digital video data stream.

The de-multiplexed Y or Luma samples are interpolated at the clock rate. Offset compensation is then added, next any VBI signals consisting of Closed-Caption, CGMS and WSS are added to the appropriate lines, then finally composite sync pulses are added to the Luma signal.(see figure 14.)

De-multiplexed component color CB and CR samples are interpolated at the clock rate.

The Luma and Chroma Interpolation filter compensate for the $\sin(x)/x$ attenuation to on chip D/A converter and simplify the output filter and allows more accurate encoding. A set of 3 different filters are available for each Luma(only two) and Chroma filtering. And user can select within these filters to fit a wide variety of applications. (see figure 12 and 13, and sub-address register 6F)

The DVE generates the necessary subcarrier color frequency for PAL or NTSC encoding from the 27Mhz system clock. This color subcarrier is then modulated by the base band component color CB and CR signals to create the video Chroma signal. (see figure 15.)

A 7.5 IRE pedestal is added for the 60Hz field rate. This can be added for the 50Hz field rate through serial bus control. (see sub-address register descriptions)

Fig. 12 Luma Filtering Including DAC Attenuation

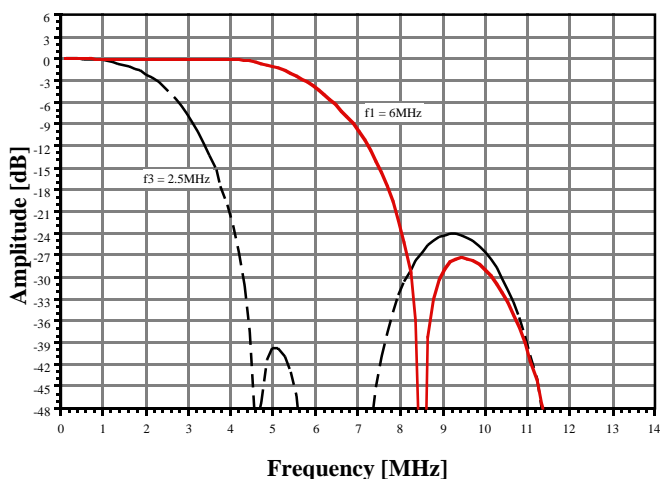
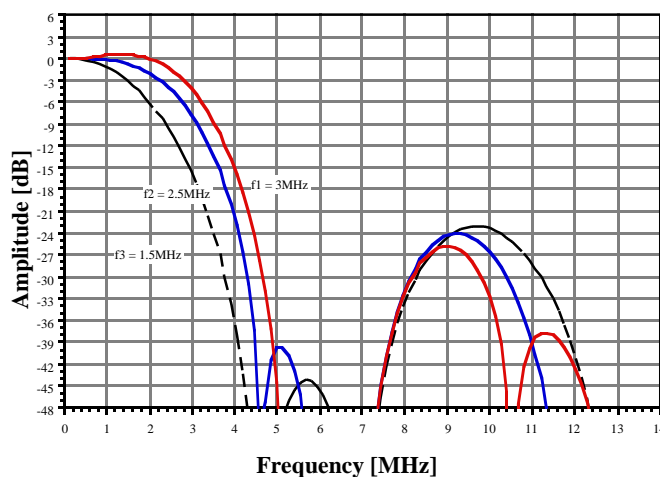


Fig. 13 Chroma Filtering



"CVBS and S-VIDEO" or "YCbCr" or "RGB" Outputs

The internal digital video signals drive 10-bit D/A converters. Converter outputs are bidirectional current sources where the current is proportional to the digital data with reference to the IBIAS reference current. The pins CVBS/Cb/B, Y/G and C/Cr/R are the respective composite, Luma and Chroma or Y/Cb/Cr or R/G/B signal current source pins. Each of the DACs can drive **75ohm** load resistor.

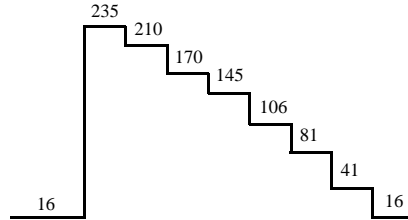
User can select 2 sets of signals from the above 3 signal sets. (see "Application Diagram" and "sub-address register descriptions".)

In Y/Cr/Cb analog component output mode, user can select one of the component interface level , Beta Cam or M2 format (see sub-address register 6E).

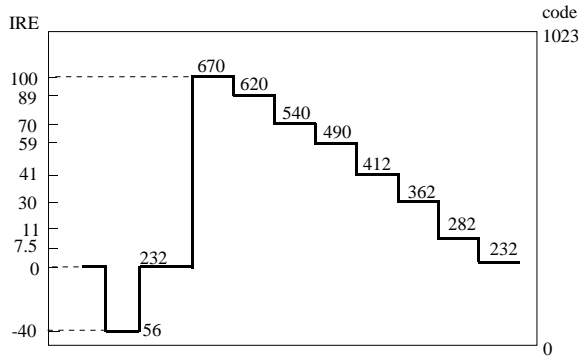
Bias Current Gain

DACs can be switched off through serial bus control to reduce power consumption. Both outputs of unused DACs should be connected to ground through a resistor to avoid charge buildup.

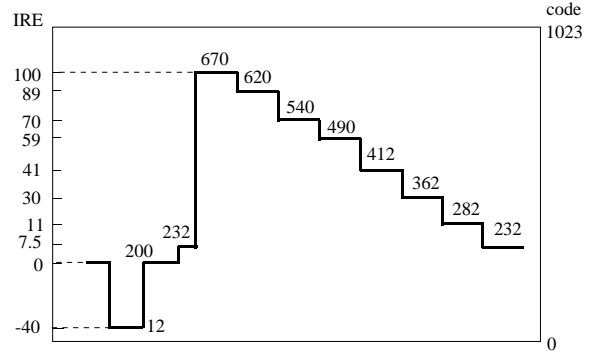
Fig 14 : Luminance Output Range



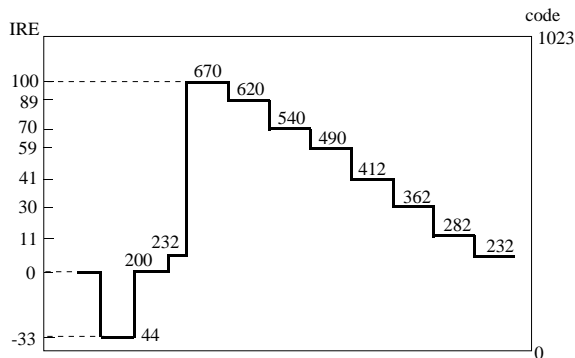
Digital Y input code(16~235)
525/60 and 625/50 system
100%amplitude,100%saturation color bar



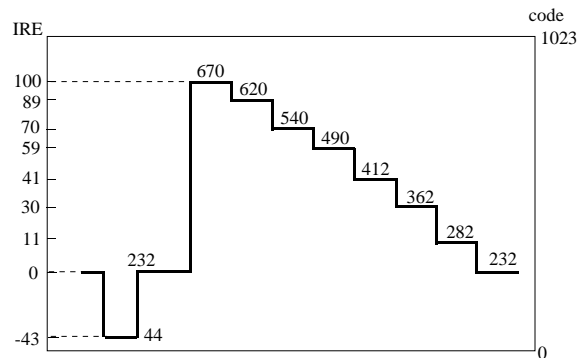
Analog Y output level(525/60 system)
100%amplitude,100%saturation color bar
=> 7.5IRE Setup Off



Analog Y output level(525/60 system)
100%amplitude,100%saturation color bar
=> 7.5IRE Setup On

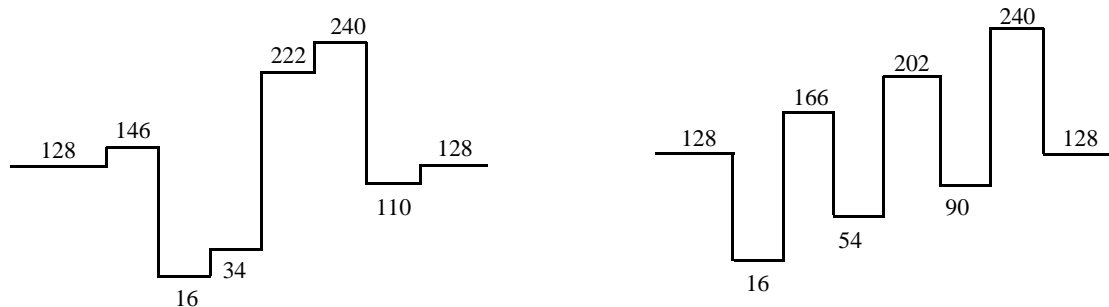


Analog Y output level(625/50 system)
100%amplitude,100%saturation color bar
=> 7.5IRE Setup On



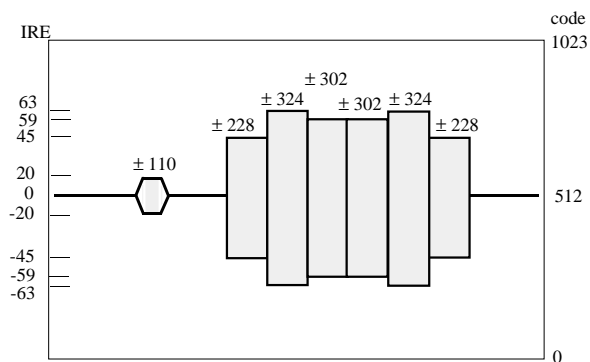
Analog Y output level(625/50 system)
100%amplitude,100%saturation color bar
=> 7.5IRE Setup Off

Fig 15 : Chrominance Output Range

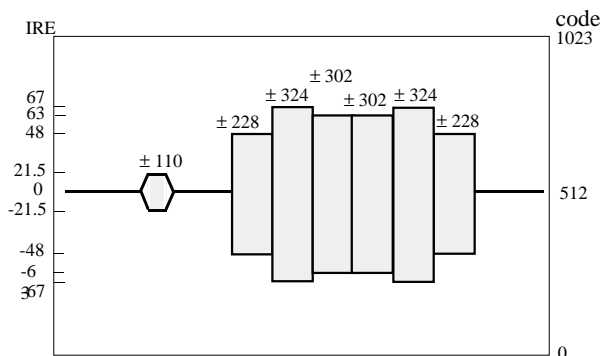


Digital Cr-input code(16~240)
525/60 and 625/50 system
100%amplitude,100%saturation color bar

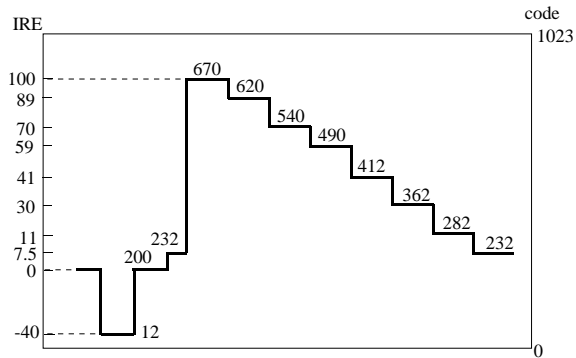
Digital Cb-input code(16~240)
525/60 and 625/50 system
100%amplitude,100%saturation color bar



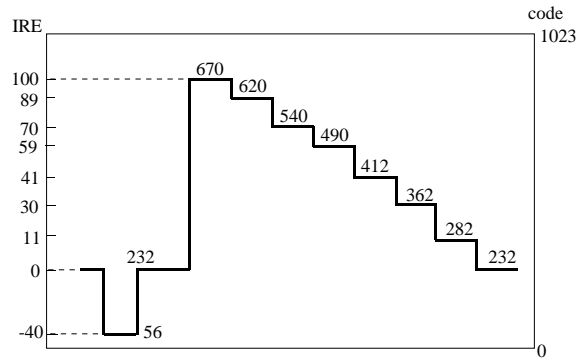
Analog C output level(525/60 system)
100%amplitude,100%saturation color bar
=> 7.5IRE Setup Off/On



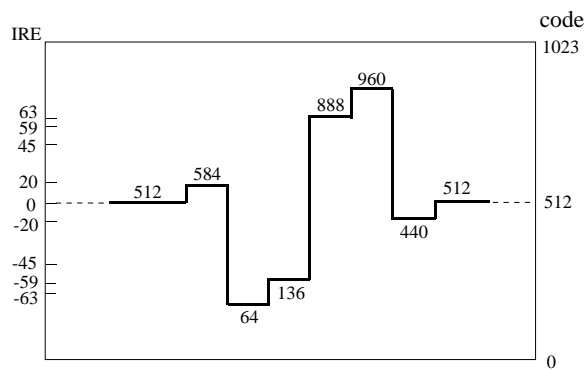
Analog C output level(625/50 system)
100%amplitude,100%saturation color bar
=> 7.5IRE Setup On/Off



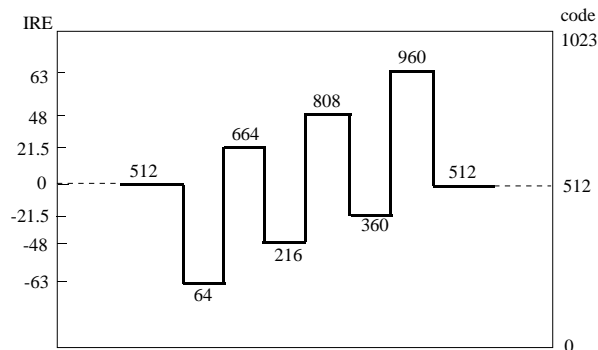
Analog Y output level
100% amplitude, 100% saturation color bar
=> 7.5IRE Setup On



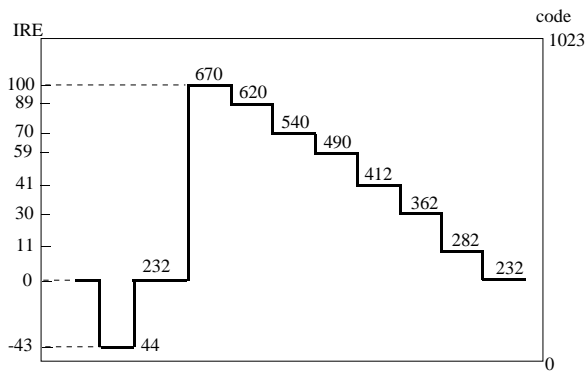
Analog Y output level
100% amplitude, 100% saturation color bar
=> 7.5IRE Setup Off



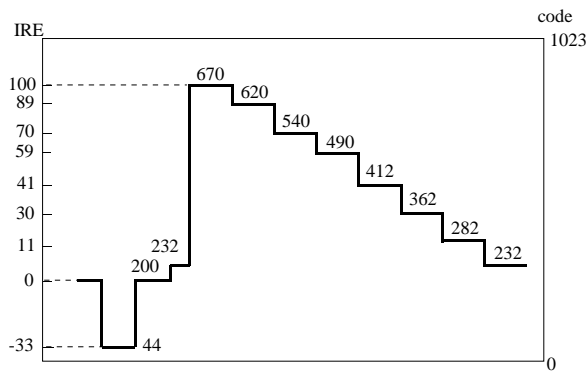
Digital Cr-input code
100% amplitude, 100% saturation color bar
=> 7.5IRE Setup On/Off



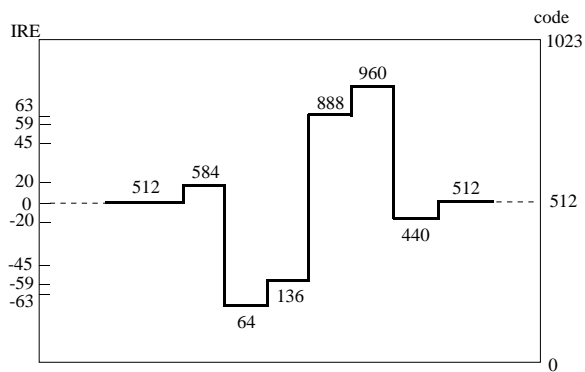
Digital Cb-input code
100% amplitude, 100% saturation color bar
=> 7.5IRE Setup On/Off



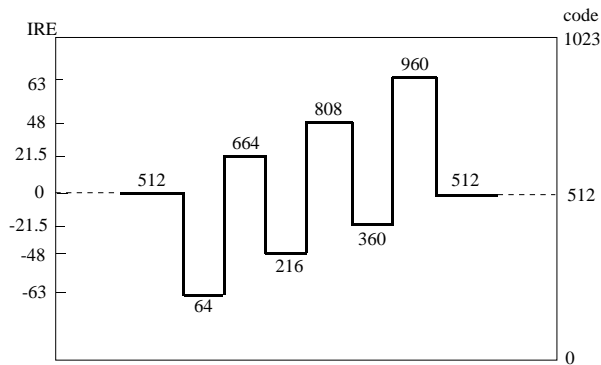
Analog Y output level
100% amplitude, 100% saturation color bar
=> 7.5IRE Setup Off



Analog Y output level
100% amplitude, 100% saturation color bar
=> 7.5IRE Setup On

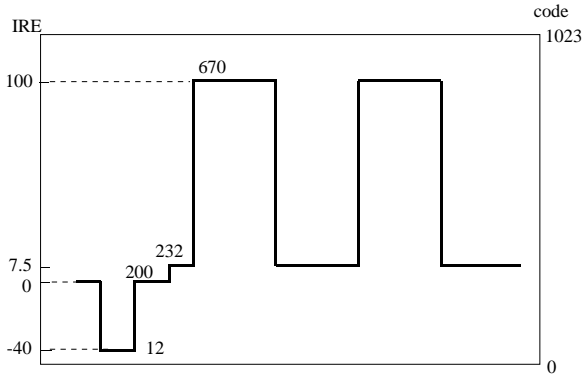


Digital Cr-input code
100% amplitude, 100% saturation color bar
=> 7.5IRE Setup On/Off

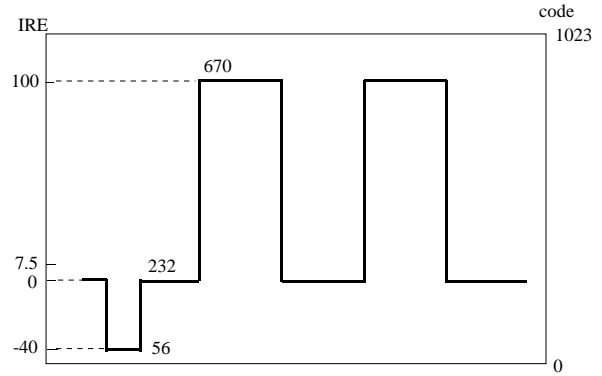


Digital Cb-input code
100% amplitude, 100% saturation color bar
=> 7.5IRE Setup On/Off

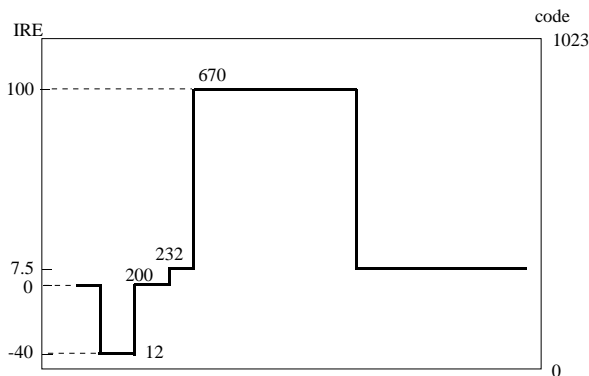
Fig 18 : RGB Output Range for 525/60 system (Sync On)



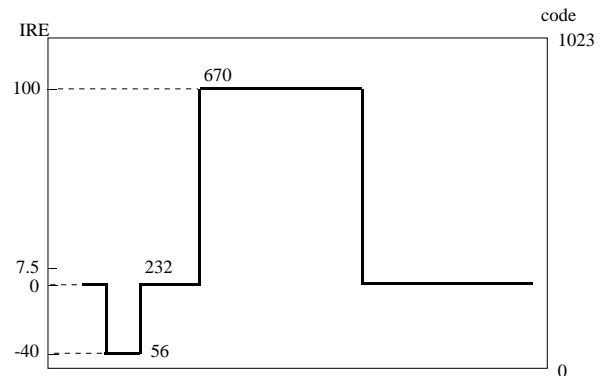
Analog R output level(525/60 system)
100%amplitude,100%saturation color bar
=> 7.5IRE Set up On



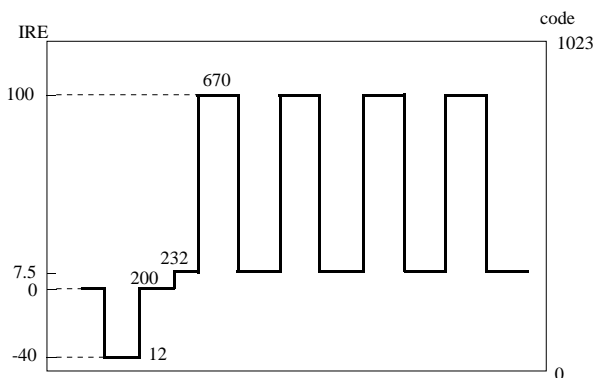
Analog R output level(525/60 system)
100%amplitude,100%saturation color bar
=> 7.5IRE Set up Off



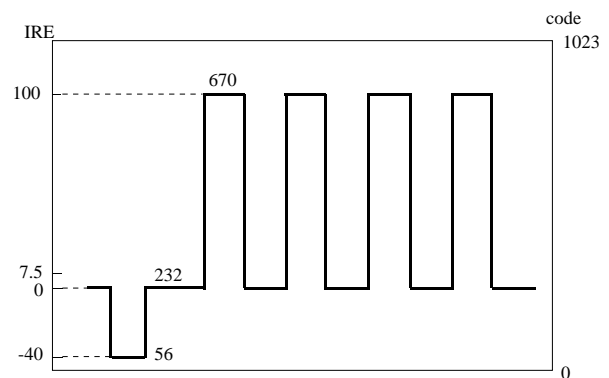
Analog G output level(525/60 system)
100%amplitude,100%saturation color bar
=> 7.5IRE Set up On



Analog G output level(525/60 system)
100%amplitude,100%saturation color bar
=> 7.5IRE Set up Off



Analog B output level(525/60 system)
100%amplitude,100%saturation color bar
=> 7.5IRE Set up On

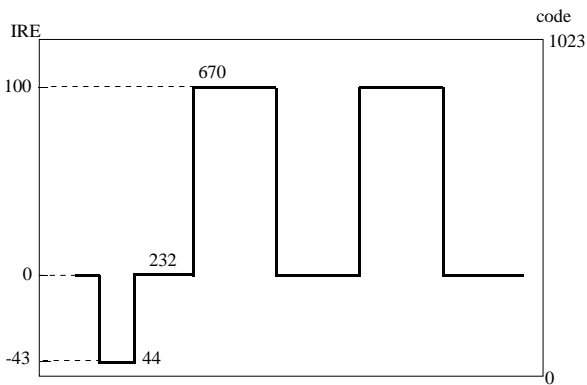


Analog B output level(525/60 system)
100%amplitude,100%saturation color bar
=> 7.5IRE Set up Off

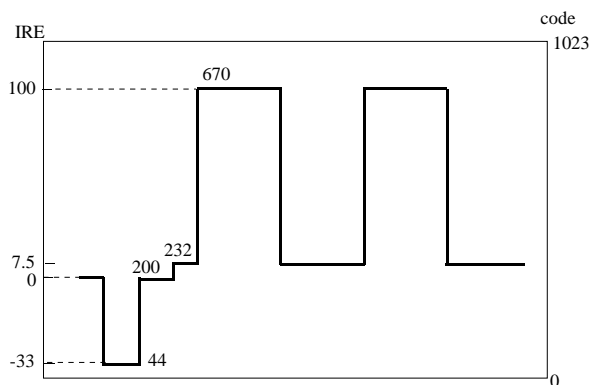
Transformation

- a) $R = Y + 1.371 (Cr - 128)$
- b) $G = Y - 0.698 (Cr - 128) - 0.336 (Cb - 128)$
- c) $B = Y + 1.732 (Cb - 128)$

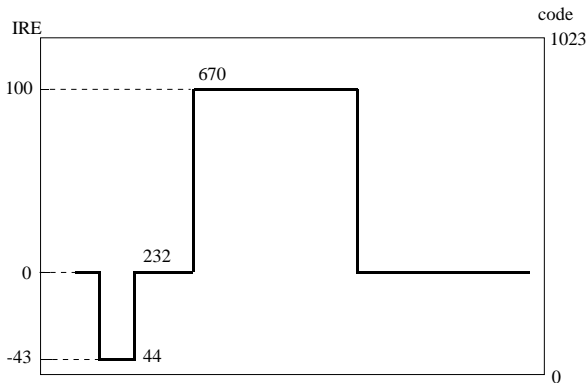
Fig 19 : RGB Output Range for 625/50 system (Sync On)



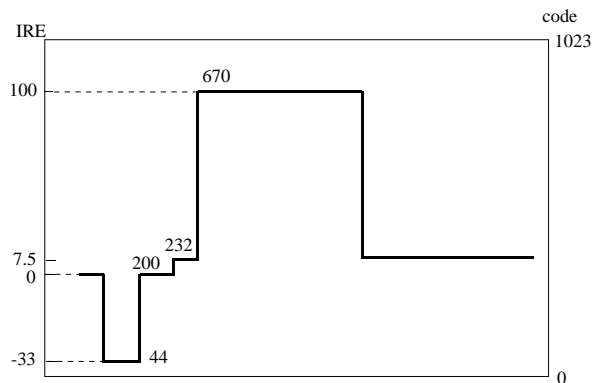
Analog R output level (625/50 system)
100% amplitude, 100% saturation color bar
=> 7.5IRE Set up Off



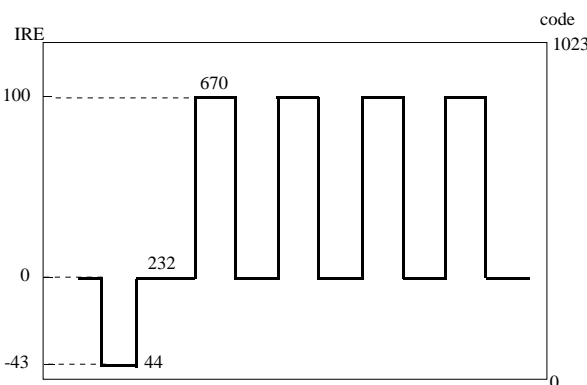
Analog R output level (625/50 system)
100% amplitude, 100% saturation color bar
=> 7.5IRE Set up On



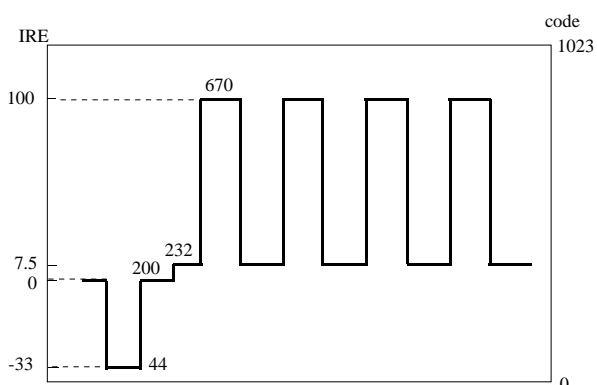
Analog G output level (625/50 system)
100% amplitude, 100% saturation color bar
=> 7.5IRE Set up Off



Analog G output level (625/50 system)
100% amplitude, 100% saturation color bar
=> 7.5IRE Set up On



Analog B output level (625/50 system)
100% amplitude, 100% saturation color bar
=> 7.5IRE Set up Off

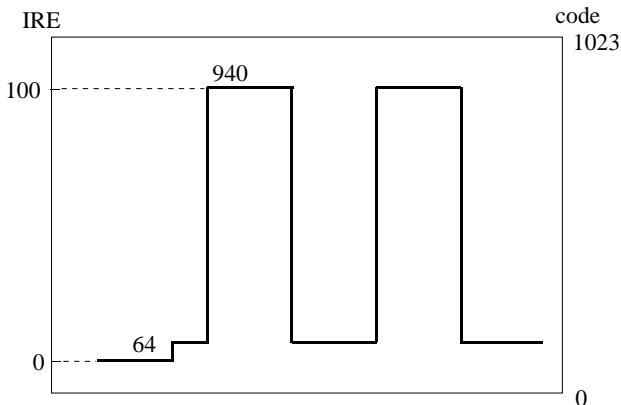


Analog B output level (625/50 system)
100% amplitude, 100% saturation color bar
=> 7.5IRE Set up On

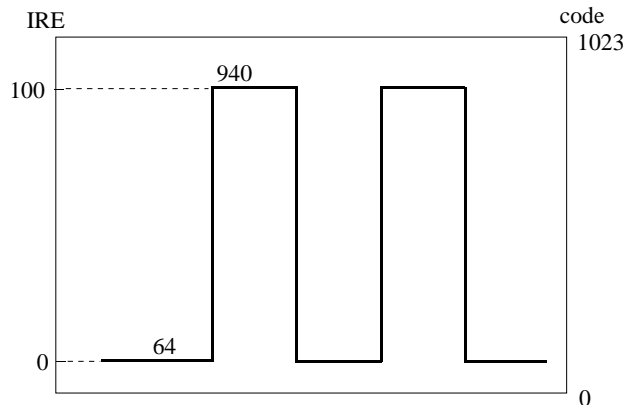
Transformation

- a) $R = Y + 1.371 (Cr - 128)$
- b) $G = Y - 0.698 (Cr - 128) - 0.336 (Cb - 128)$
- c) $B = Y + 1.732 (Cb - 128)$

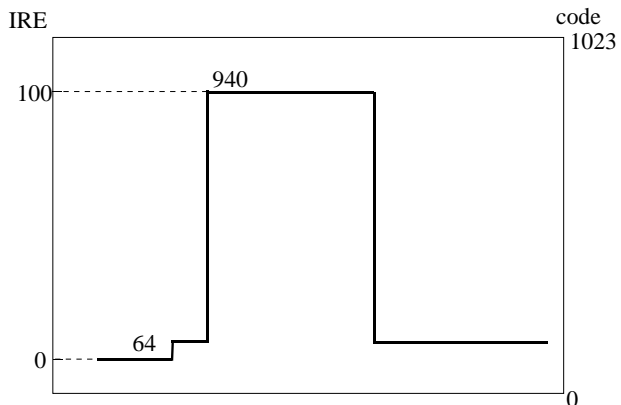
Fig 20 : RGB Output Range for 525/60 system (Sync Off)



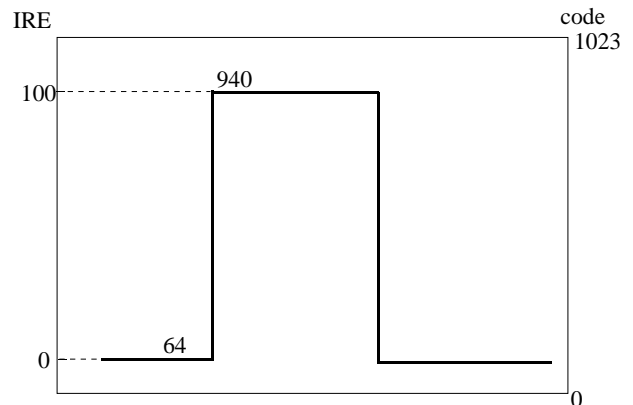
Analog R output level (525/60 system)
100% amplitude, 100% saturation color bar
=> 7.5IRE Set up On



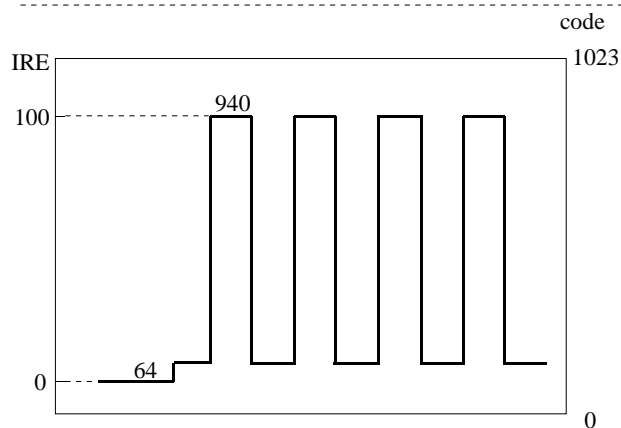
Analog R output level (525/60 system)
100% amplitude, 100% saturation color bar
=> 7.5IRE Set up Off



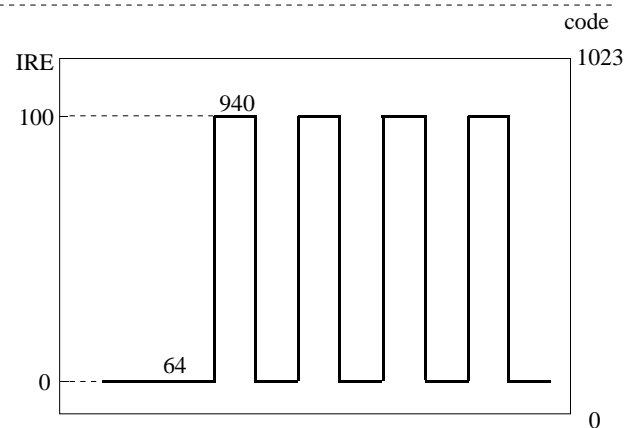
Analog G output level (525/60 system)
100% amplitude, 100% saturation color bar
=> 7.5IRE Set up On



Analog G output level (525/60 system)
100% amplitude, 100% saturation color bar
=> 7.5IRE Set up Off



Analog B output level (525/60 system)
100% amplitude, 100% saturation color bar
=> 7.5IRE Set up On

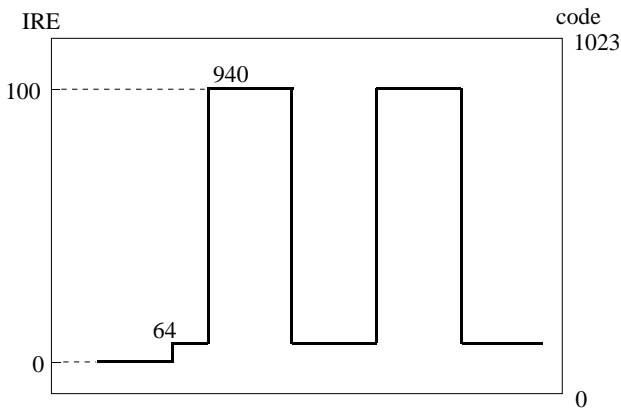


Analog B output level (525/60 system)
100% amplitude, 100% saturation color bar
=> 7.5IRE Set up Off

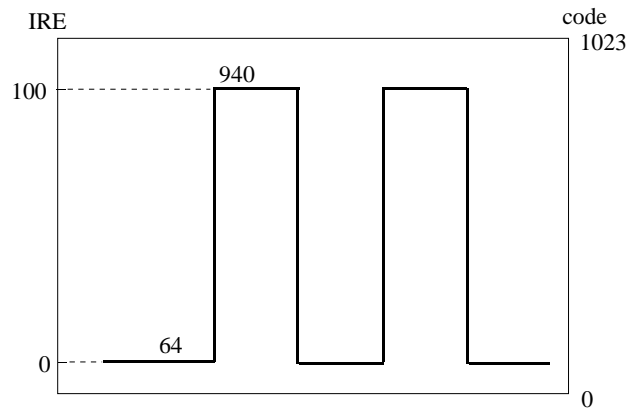
Transformation

- a) $R = Y + 1.371 (Cr - 128)$
- b) $G = Y - 0.698 (Cr - 128) - 0.336 (Cb - 128)$
- c) $B = Y + 1.732 (Cb - 128)$

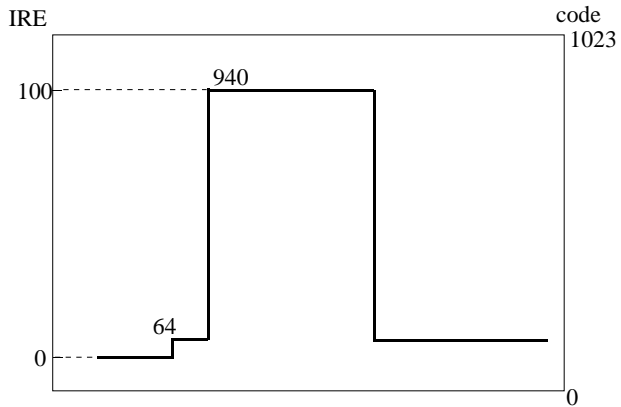
Fig 21 : RGB Output Range for 625/50 system (Sync Off)



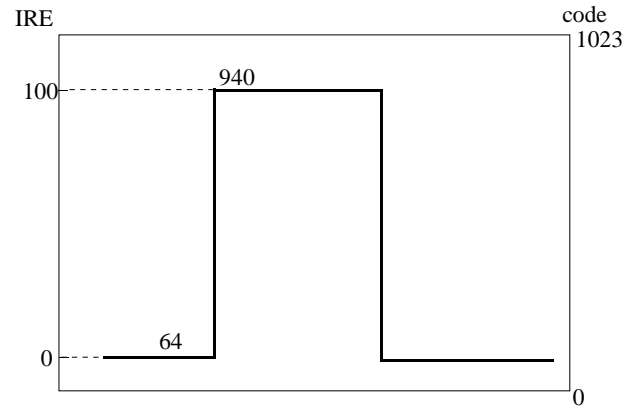
Analog R output level (625/60 system)
100% amplitude, 100% saturation color bar
=> 7.5IRE Set up On



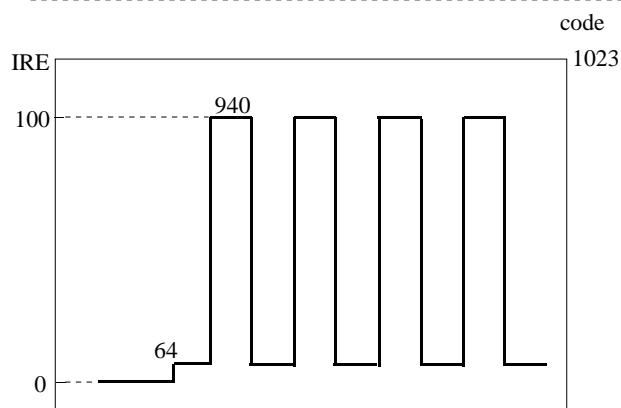
Analog R output level (625/60 system)
100% amplitude, 100% saturation color bar
=> 7.5IRE Set up Off



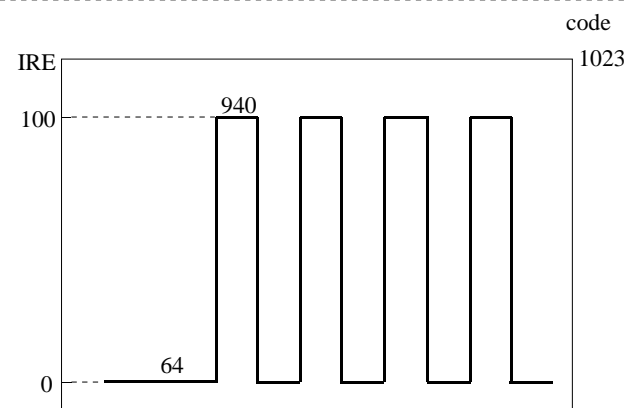
Analog G output level (625/60 system)
100% amplitude, 100% saturation color bar
=> 7.5IRE Set up On



Analog G output level (625/60 system)
100% amplitude, 100% saturation color bar
=> 7.5IRE Set up Off



Analog B output level (625/60 system)
100% amplitude, 100% saturation color bar
=> 7.5IRE Set up On



Analog B output level (625/60 system)
100% amplitude, 100% saturation color bar
=> 7.5IRE Set up Off

Transformation

- a) $R = Y + 1.371 (Cr - 128)$
- b) $G = Y - 0.698 (Cr - 128) - 0.336 (Cb - 128)$
- c) $B = Y + 1.732 (Cb - 128)$

Copy Generation Management System (CGMS) Encoding

CGMS signals can be encoded by the DVE onto output video line 20 (525 / 60 for Japan).
CGMS identification signals also identify and control the TV screen presentation mode - wide screen, letter box and or normal -16:9 or 4:3.
Data is Double-Buffered and is latched at the start of Field 1.

(see figures 24 for sub-address register descriptions.)

Wide Screen Signaling (WSS) Encoding

WSS signals can be encoded by the DVE onto output video line 23 (625 / 50 for Europe).
WSS identification signals also identify and control the TV screen presentation mode - wide screen, letter box and or normal -16:9 or 4:3.
Data is Double-Buffered and is latched at the start of Field 1.

(see figures 25 for sub-address register descriptions.)

Closed-Caption Encoding

Closed-Captioned or Extended Data Service signals can be encoded by the DVE onto output video line 21/284 (NTSC) and line 22/335 (PAL). The CC data is input through the serial bus interface. Two 8-bit byte data pairs are encoded for each field. There are four registers for holding the data - two bytes per field. The serial data is 7bit US-ASCII MSB first, proceeded by an odd parity bit. Total 8-bits. (P-7-6-5-4-3-2-1-0)

The DVE automatically generates the required clock run in and start bit for CC encoding. (see figure 16.)

When Closed-Captioning is enabled, the system micro processor (uP) should update the CC data once each frame. This DVE will automatically NULL characters when there is no CC data to encoder after the CC data has been processed by setting the \$87[5] register.

It is recommended to write CC data only to the inactive frame. Field1 and Field2 data are double-buffered by the Frame sync falling edge of previous Frame, updating Frame 2 data during Frame1 display and Frame1 data during Frame2 display.

When the \$87[4] register is set, the DVE will generate the parity bit automatically.

(see figures 26 and 27 for sub-address register descriptions.)

Serial Control Bus

Control of the DVE device is accomplished through the **I2C-Bus** or 4-wired **SPI** serial bus.

In I2C mode, pins **SDA** and **SCL** are the respective data and clock signals. Device address can be 40(hex)/41(hex) or 1E(hex)/1F(hex). Slave address is chosen at reset by the state of the ChipA pin signal { 0 : 40(hex)/41(hex), 1 : 1E(hex)/1F(hex) }

Sub-address register read and write operations are documented in the following figures 22a - 22b.

In SPI mode, pins **SO**, **SI**, **SCK** and **SEL** are the respective data input, output, serial clock and chip select signals. Register read and write operations are documented in the following figures 23a - 23b

MACROVISION™ Copy Protection

When enabled, the Luma and Chroma signals are modified according to the MACROVISION™ copy protection process for Pay Per View (PPV) and DVD applications revision **7.01** dated Sep 6th, 1996.

Enabling and control is through the serial control bus.

No MC44724A parts will be sent to the customer until the customer provides MOTOROLA with written confirmation of a license, non-disclosure or a waiver from MACROVISION™.

The MC44725A device is available without MACROVISION™ encoding.

Fig 22-a : I2C-BUS Interface Write operation Timing

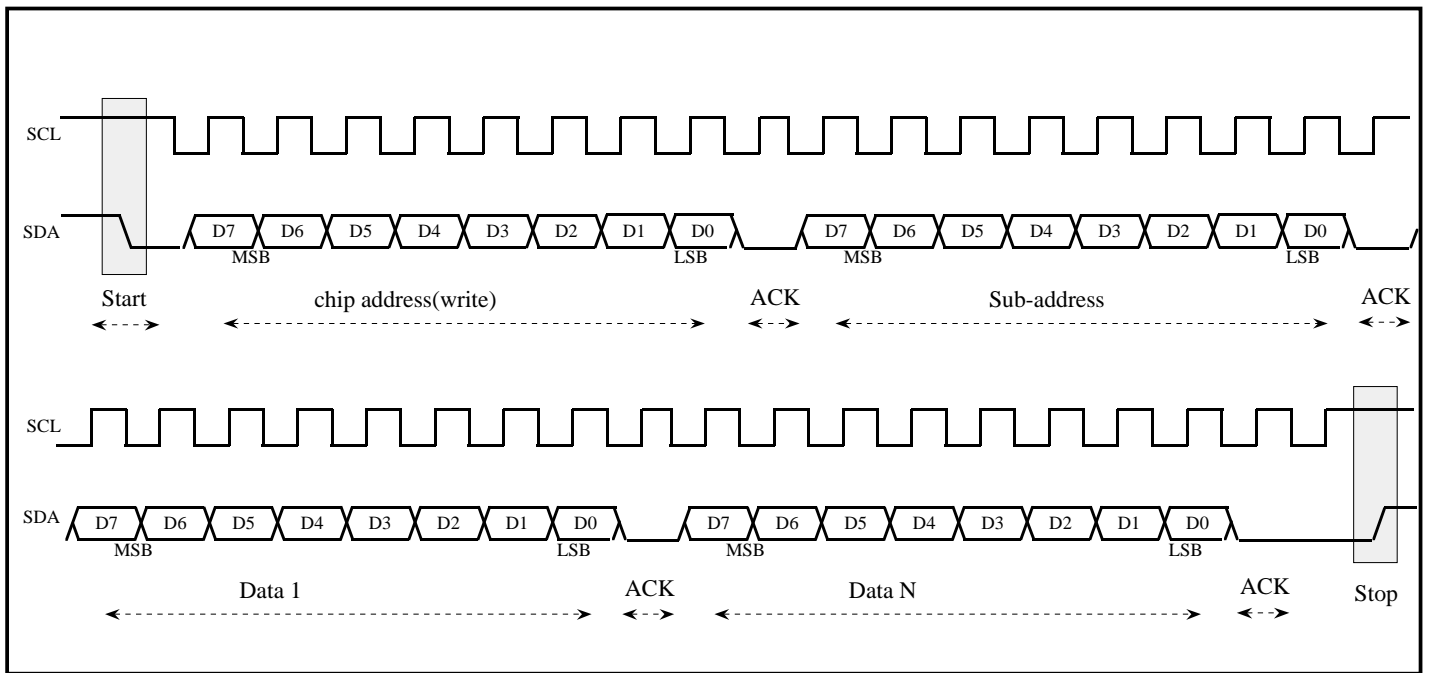


Fig 22-b : I2C-BUS Interface Read operation Timing

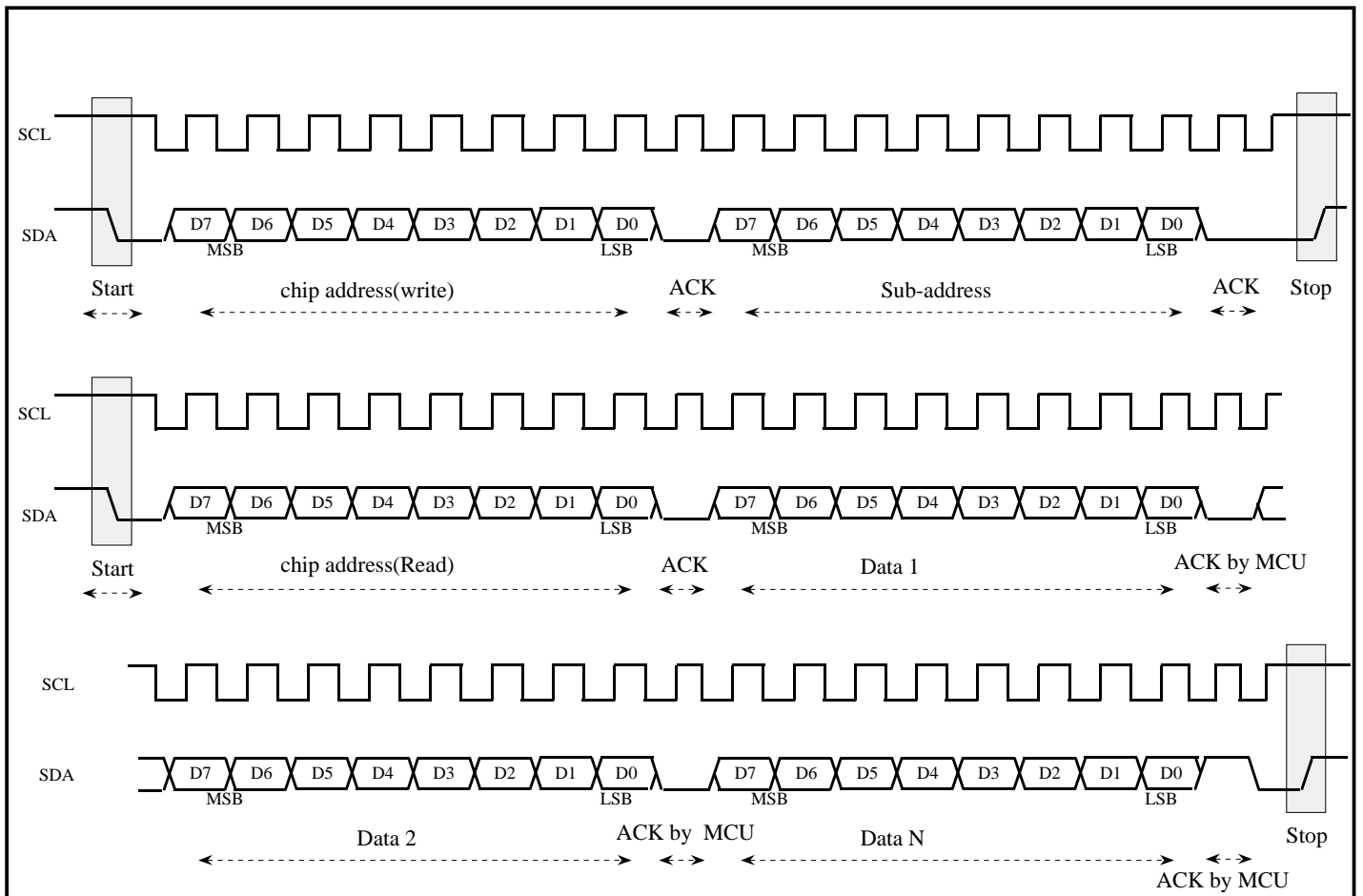


Fig 23-a : SPI-BUS Interface Write operation Timing

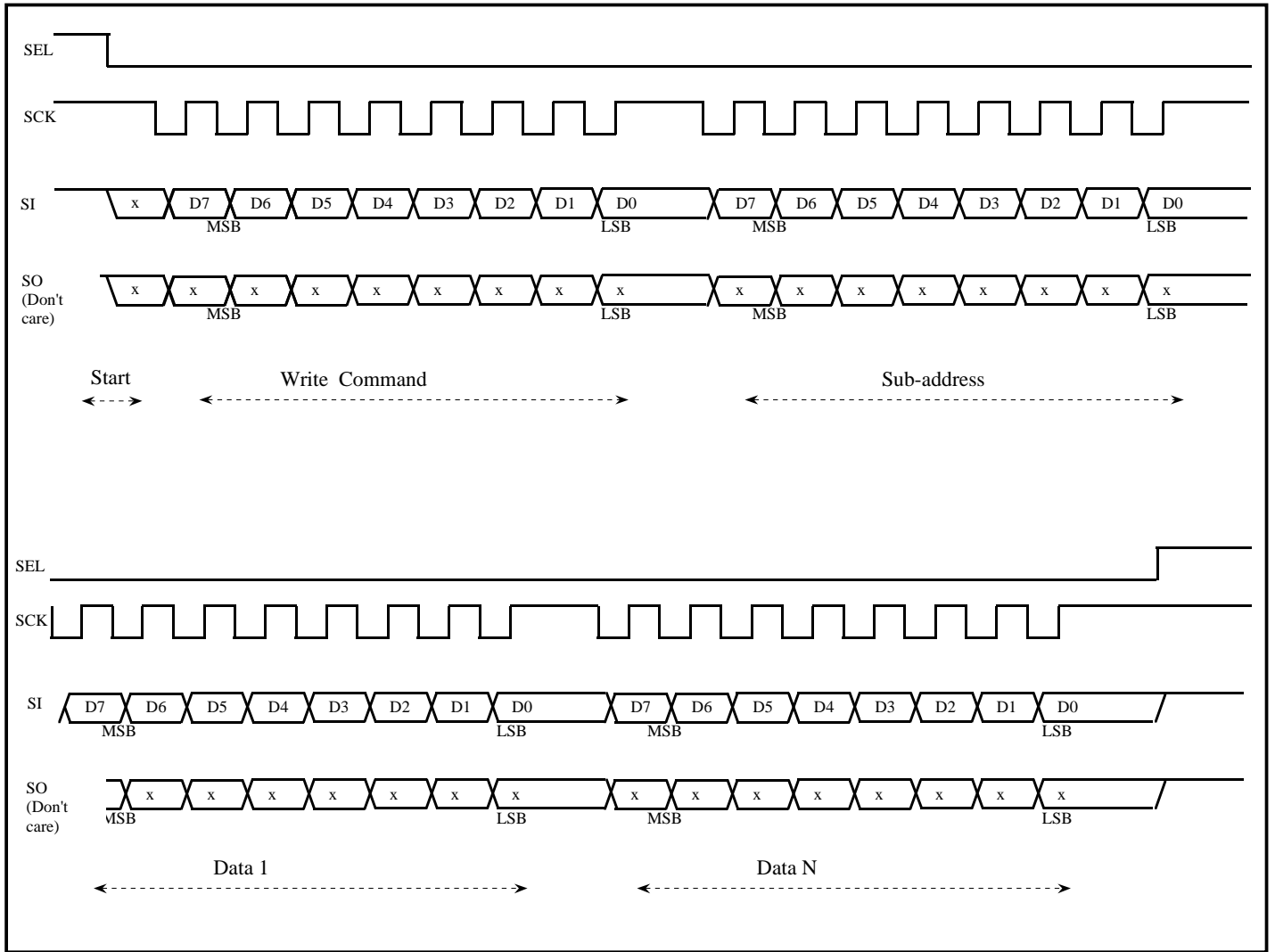
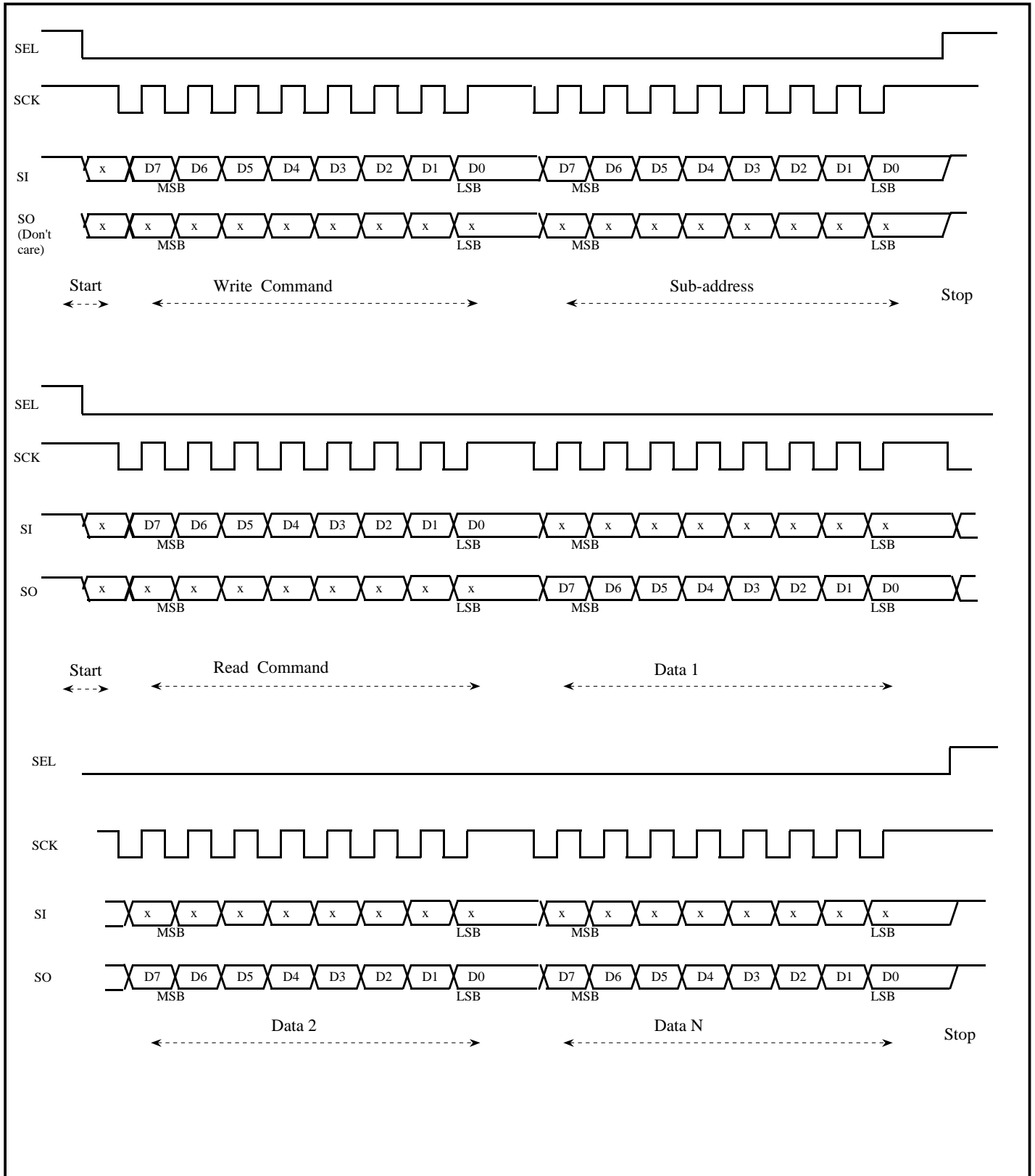


Fig 23-b : SPI-BUS Interface Read operation Timing



[Specifications]

Maximum Ratings

DC Supply Voltage	Vdd	-0.5 ~ +7.0	V	Other
Input Voltage, All Inputs	Vin	-1.5 ~ Vdd+1.5	V	-1.5 ~ Vdd+1.95V at Vdd=3.3V
Output Voltage, All Outputs	Vout	-0.5 ~ Vdd+1.5	V	
DC Output Current, per Pin	Iout	25	mA	
Power Dissipation	Pd	750	mW	
Storage Temperature	Tstg	-65 ~ +150	°C	

Electrical Characteristics

Characteristic	Symbol	Min	Typ	Max	Unit	Other
Power Supply Voltage(Analog Blocks) DAVDD	AVDD	3.1 4.75	3.3 5.0	3.5 5.25	V	
Power Supply Voltage(Digital Blocks) DVDD	DVDD	3.1	3.3	3.5	V	
Supply Current(Analog Blocks)	Aicc	-	70	-	mA	Vref = 1V,
Supply Current(Digital Blocks)	Dicc	-	50	-	mA	Iref = 1.8KΩ, Rl = 180Ω
Operating Temperature	Ta	0	-	70	°C	

DAC Blocks Characteristics(Power Supply 3.3V, Ta=25°C)

Characteristics	Sym.	Min	Typ	Max	Unit	Other
Resolution	-	-	-	10	Bit	
Integral Non-Linearity	INL	-	-	± 2.0	LSB	Vref = 1.0V, Ibias = 1.8kΩ, Rl = 180Ω
Differential Non-Linearity	DNL	-	-	± 1.0	LSB	Vref = 1.0V, Ibias = 1.8kΩ, Rl = 180Ω
Analog Output Voltage	Vyo	0.85	1.00*	1.15	Vp-p	Vref = 1.0V, Ibias = 1.8kΩ, Rl = 180Ω
Full Scale Output Voltage	Vyfs	0.85	1.00**	1.15	V	Vref = 1.0V, Ibias = 1.8kΩ, Rl = 180Ω
Zero Scale Output Voltage	Vyzs	-	0.0***	0.1	V	Vref = 1.0V, Ibias = 1.8kΩ, Rl = 180Ω
External Load Resistance	RL	75	-	-	Ω	

Note : * : code 000(hex) ~code max.

** : code max.

*** : code 000(hex)

: Negative Outputs are not tested.

DAC Blocks Characteristics(Power Supply 5.0V, Ta=25°C)

Characteristics	Sym.	Min	Typ	Max	Unit	Other
Resolution	-	-	-	10	Bit	
Integral Non-Linearity	INL	-	-	± 2.0	LSB	Vref = 1.5V, Ibias = 1.8kΩ, Rl = 180Ω
Differential Non-Linearity	DNL	-	-	± 1.0	LSB	Vref = 1.5V, Ibias = 1.8kΩ, Rl = 180Ω
Analog Output Voltage	Vyo	1.35	1.5*	1.65	Vp-p	Vref = 1.5V, Ibias = 1.8kΩ, Rl = 180Ω
Full Scale Output Voltage	Vyfs	1.35	1.5**	1.65	V	Vref = 1.5V, Ibias = 1.8kΩ, Rl = 180Ω
Zero Scale Output Voltage	Vyzs	-	0.0***	0.1	V	Vref = 1.5V, Ibias = 1.8kΩ, Rl = 180Ω
External Load Resistance	RL	75	-	-	Ω	

Note : * : code 000(hex) ~code max.

** : code max.

*** : code 000(hex)

: Negative Outputs are not tested.

Note : D/A Converter Output Full Scale Voltage

$$V_{yts} (V) = (V_{ref} / I_{ref}) * K * R_{load} \quad (K = 10 : \text{DAC Current Gain})$$

(code 3ff(hex))

Power Dissipation

$$P_d = [(V_{ref1}/I_{ref1} * 10 * 3ch) + (V_{ref2} / I_{ref2} * 10 * 3ch) + 10mA (\text{Bais Current})] * 3.3V (\text{or } 5V)$$

For More Information On This Product

Go to: www.freescale.com

[Specifications]

Clock Blocks Characteristics

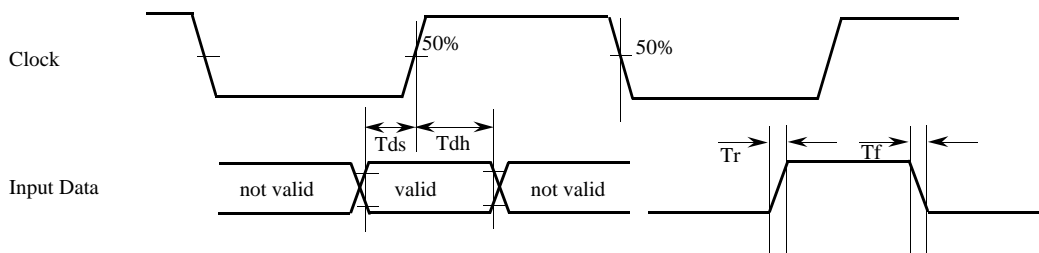
Characteristic	Symbol	Min	Typ	Max	Unit
Clock Rate	fc	-	27.0	-	MHz
Clock Duty Cycle	Dty	45	50	55	%

Digital Blocks Electrical Characteristics(Power Supply 3.3V, Ta=25°C ± 3°C)

Characteristics	Symbol	Min	Typ	Max	Unit
Input Voltage HIGH	ViH	2.0	-	5.25	V
LOW	ViL	-	-	0.8	V
Output Voltage HIGH	VoH	2.4	-	-	V
(2.0mA) LOW	VoL	-	-	0.4	V
Input Leakage Current	Iin	-	±2.5	-	µA
Hi-Z Leakage Current	Ioz	-	±20	-	µA
Input Capacitance	Cin	-	-	20	pF
Load Capacitance	CL	-	-	20	pF
Data Setup Time	Tds	4	-	-	nS
Data Hold Time	Tdh	5	-	-	nS
Input Rise Time	Tr	-	-	5	nS
Input Fall Time	Tf	-	-	5	nS
Data delay	Td	-	-	27	nS

I2C/SPI-BUS Blocks Characteristics(Power Supply 3.3V, Ta=25°C ± 3 °C)

Characteristics	Symbol	Min	Typ	Max	Unit
Input Voltage LOW	VILM	-	-	0.8	V
Input Voltage High	VIHM	2.3	-	5.25	V
Input Current	VIM	-	-	± 10	µA
SDA Output Voltage (IOM=3mA)	VOM	-	-	0.4	V
Output Current (during acknowledge)	IOM	3	-	-	mA
SPI Maximum Clock Rate	fspi	-	-	3	MHz



[I2C-BUS Slave Address 40(hex)/41(hex) or 1E(hex)/1F(hex)]

<I2C-Bus Format>

WRITE MODE

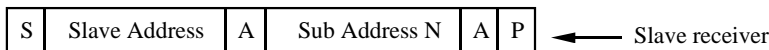


40(hex) or 1E(hex)

if more than 1byte DATA is transmitted,
then auto-increment of the Sub Address is performed

- S Start condition
- Slave Address 40(hex) or 1E(hex)
- A Acknowledge, generated by the slave
- Sub Address Sub address byte
- DATA 0 First data byte
- DATA N continued data byte(Sub Address is auto increment)
- P Stop condition

READ MODE



40(hex) or 1E(hex)

then



41(hex) or 1F(hex)

- S Start condition
- Slave Address Slave receiver is act transmitter is ad
- A Acknowledge, generated by the slave
- Sub Address N Sub Address byte
- DATA N DATA byte of Register N
- DATA N + 1 DATA byte of Register N + 1 (address auto-increment)
- AM Acknowledge, generated by the micro controller
- P Stop condition (When Last AM must be '1')

[SPI-BUS]

<SPI-Bus Format>

WRITE MODE

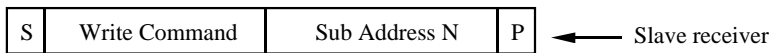


40(hex) or 1E(hex)

if more than 1byte DATA is transmitted,
then auto-increment of the Sub Address is performed

- S Chip select on (Hi to Lo)
- Write Command 40(hex) or 1E(hex)
- Sub Address Sub address byte
- DATA 0 First data byte
- DATA N continued data byte(Sub Address is auto increment)
- P Chip select off (Lo to Hi)

READ MODE



40(hex) or 1E(hex)

then

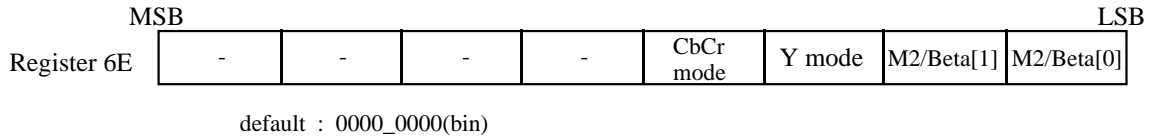


41(hex) or 1F(hex)

- S Chip select on (Hi to Lo)
- Sub Address N Sub Address byte set
- Read Command 41(hex) or 1F(hex)
- DATA N DATA byte of Register N
- DATA N + 1 DATA byte of Register N + 1 (address auto-increment)
- P Chip select off (Lo to Hi)

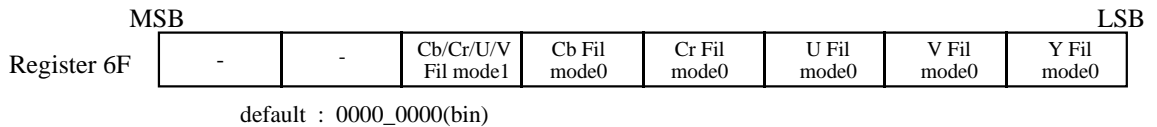
[Register Mapping and Description]

Sub-address 6E : Y/CbCr mode setup (write)



- M2/Beta : Y select M2 type, BetaCam type
 00 : BetaCam (default)*
 01 : M2 (7.5IRE setup)*
 10 : BetaCam (7.5IRE setup)*
 11 : M2*
- * : Register \$72 [4] = " 0 " ----> BetaCam/MII (setup level : 0 IRE)
 : Register \$72 [4] = " 1 " ----> BetaCam/MII (setup level : 7.5 IRE)
- Y mode : Separate switch
 0 : Y/CbCr's Y is same as Y/C/CVBS's Y (default)
 1 : Y/CbCr's Y is the BetaCam or M2 Y signal
- CbCr gain : Cb/Cr gain
 0 : normal operation (default)
 1 : 1/2 gain (disable code divided by 2)

Sub-address 6F : Interpolation Filter Switch (write)



- Y Fil mode 0 : Luma Filter switch
 0 : wide 6MHz (default)
 1 : narrow 2.5Mhz
- V Fil, U Fil mode0 : Chroma Filter switch
 0 : wide 3.0MHz(default)
 1 : narrow 1.5MHz
- Cr Fil, Cb Fil mode 0 : Cr/Cb, RGB Filter switch
 0 : wide 3.0MHz(default)
 1 : narrow 1.5MHz
- Cr /Cb Fil mode 1 : wide Filter switch
 0 : wide0 3.0MHz(default)
 1 : wide1 2.5MHz

Sub-address 70 : Variable I/O Switch (write/read)

	MSB							LSB
Register 70	bs-off	self-SW	color bar select	VBLK SW	C/Fsync SW	F/Vsync SW	M/S mode1	M/S mode0
	default : 0000_0001(bin)							

bs - off : color burst control switch On/Off
 0 : color burst ON (default)
 1 : color burst OFF

self - SW : internal self H/V counter reset switch On / Off
 0 : self counter reset OFF (default)
 1 : self counter reset ON
 Note : this mode is ONLY valid at when 70h[1: 0] is "10(bin)" or "11(bin)".

color bar select : color bar select

	Luma	Chroma
0 : color bar	100%	75%
1 : color bar	100%	100%

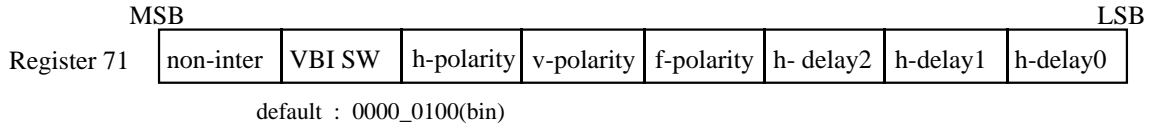
VBLK SW : Vertical Blanking Mask Enable switch On-Off
 0 : reject VBI information data in vertical blanking period (default)
 1 : through VBI information data in vertical blanking period

C/Fsync SW : Composite sync/Frame sync output switch
 0 : Frame sync output (default)
 1 : composite sync output

F/Vsync SW : Frame sync /Vertical sync output switch
 0 : Vertical sync output (default)
 1 : Frame sync output

M/S sync mode1 : Master or Slave sync mode
 M/S sync mode0 : 00 : 601 H/V master mode
 01 : 656 slave mode(no H/Vsync output) (default)
 10 : Fsync/Hsync slave mode
 11 : Vsync/Hsync slave mode

Sub-address 71 : Sync control (write/read)



- non-inter : non-interlaced mode select
0 : interlace mode (default)
1 : non-interlace mode
- VBI SW : vertical blanking information signal input control switch on 48 pin
0 : VBI input Off (default)
1 : VBI input On
- h-polarity : polarity of Hsync
0 : negative (default)
1 : positive
- v-polarity : polarity of Vsync
0 : negative (default)
1 : positive
- f-polarity : polarity of Fsync
0 : field1 (odd) = low level (default)
1 : field1 (odd) = high level
- h-delay2 : delay on Hsync with reference to DVIA/DVIB data in Master mode
- h-delay1 : 000: + 4 clock delay
- h-delay0 : 001: + 3 clock delay
010: + 2 clock delay
011: + 1 clock delay
100: + 0 clock delay
101: - 1 clock delay
110: - 2 clock delay
111: - 3 clock delay

Note : this h-delay can be also related with 7A[7:0] register and can delay totally +2023 clock delay in H/V or H/Fsync slave mode.

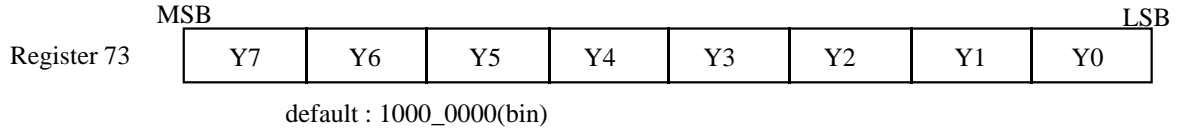
Sub-address 72 : PAL/NTSC setup (write / read)

	MSB							LSB
Register 72	phase-set	TEST	C/Fsync/VBI I/O SW	color bar	setup75	625/525	PAL/ NTSC2	PAL/ NTSC1

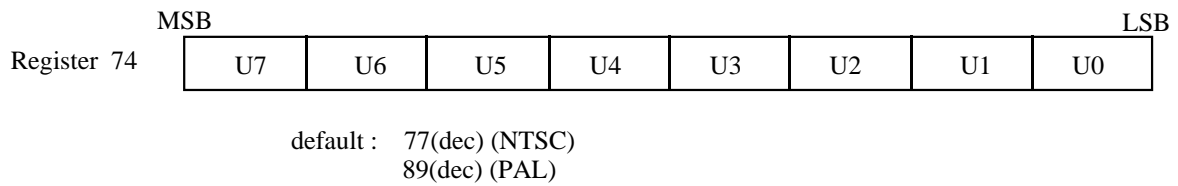
default : 0000_1000(bin) NTSC (If "PAL/NTSC" pin is LOW level)
0000_0101(bin) PAL

- phase-set : color sub-carrier phase synchronization
0 : free running (default)
1 : 1 phase reset/8 field and 1 phase reset/4 frame
- TEST : for test, should be "0"
- C/Fsync/VBI I/O SW : Input/Output switch on 48 pin (C/Fsync/VBI pin)
0 : VBI input(default)
1 : Csync or Frame sync output
- color bar : internal color bar generator control
0 : normal operation (default)
1 : color bar generator On
(need to set color bar mode on sub-address 70[5].)
- setup75 : Setup level for Luminance
0 : setup level for luminance = 0IRE
1 : setup level for luminance = 7.5IRE
- 625/525 : control line mode
0 : 525 lines / 60 Hz mode
1 : 625 lines / 50 Hz mode
- PAL/NTSC2 : subcarrier control
PAL/NTSC1
00 : NTSC(M)
01 : PAL (BDGHI)
10 : PAL (M)
11 : PAL (N)

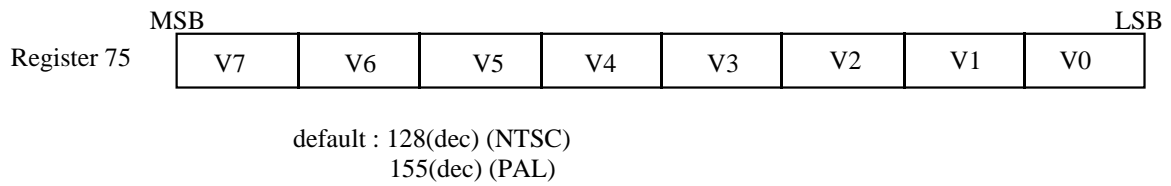
Sub-address 73: Vertical Blanking Information Luma (Y) Level (write only)



Sub-address 74: Burst Chroma (U) Level (write only)



Sub-address 75: Burst Chroma (V) Level (write only)



Sub-address 76 : DAC set 1 signal control (write only)

	MSB								LSB
Register 76	Cr	Cb	Luma	dac 1pin	dac 7pin	dac 4pin	dac set 1 mode[1]	dac set 1 mode[0]	

default : 0000_0000(bin)

- Cr : Cr/Cb signal control (Data path enable)
0 : Cr, Cb On (default)
1 : chrominance Off
- Cb : Cr/Cb signal control (Data path enable)
0 : Cr, Cb On (default)
1 : chrominance Off
- Luma : Luminance control (Data path enable)
0 : luminance On (default)
1 : luminance Off
- dac 1pin : D/A converter (1) output On-Off control
0 : CVBS/Cb/BDAC1, C/Cr/RDAC1, Y/GDAC1 output On (default)
1 : CVBS/Cb/BDAC1, C/Cr/RDAC1, Y/GDAC1 output Off
- dac 4pin : D/A converter (1) output On-Off control
0 : CVBS/Cb/BDAC1, C/Cr/RDAC1, Y/GDAC1 output On (default)
1 : CVBS/Cb/BDAC1, C/Cr/RDAC1, Y/GDAC1 output Off
- dac 7pin : D/A converter (1) output On-Off control
0 : CVBS/Cb/BDAC1, C/Cr/RDAC1, Y/GDAC1 output On (default)
1 : CVBS/Cb/BDAC1, C/Cr/RDAC1, Y/GDAC1 output Off
- dac set 1 mode : 1~9-pin's D/A converter output signal control
01 or 11 : R/G/B output On
10 : Y/Cr/Cb output On
00 : Y/C/CVBS output On

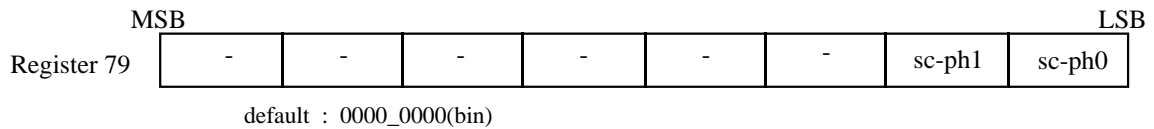
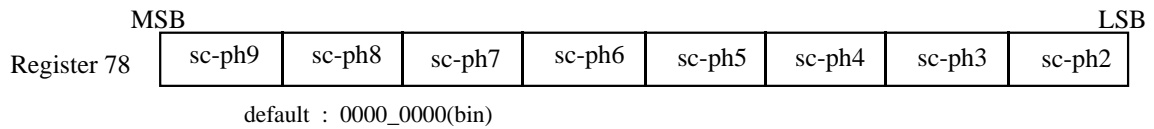
Sub-address 77 : DAC set 2 signal control (write only)

	MSB								LSB
Register 77	B	R	G	dac 17pin	dac 23pin	dac 20pin	dac set 2 mode[0]	dac set 2 mode[0]	

default : 0000_0001(bin)

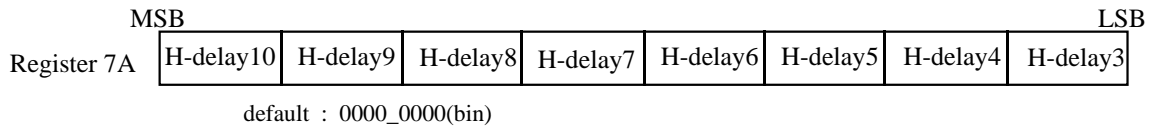
- B : B/R/G signal control (Data path enable)
0 : B/R/G signal On (default)
1 : B/R/G signal Off
- R : B/R/G signal control (Data path enable)
0 : B/R/G signal On (default)
1 : B/R/G signal Off
- G : B/R/G signal control (Data path enable)
0 : B/R/G signal On (default)
1 : B/R/G signal Off
- dac 17pin : D/A converter (2) output On-Off control
0 : CVBS/Cb/BDAC2, C/Cr/RDAC2, Y/GDAC2 output On (default)
1 : CVBS/Cb/BDAC2, C/Cr/RDAC2, Y/GDAC2 output Off
- dac 20pin : D/A converter (2) output On-Off control
0 : CVBS/Cb/BDAC2, C/Cr/RDAC2, Y/GDAC2 output On (default)
1 : CVBS/Cb/BDAC2, C/Cr/RDAC2, Y/GDAC2 output Off
- dac23pin : D/A converter (2) output On-Off control
0 : CVBS/Cb/BDAC2, C/Cr/RDAC2, Y/GDAC2 output On (default)
1 : CVBS/Cb/BDAC2, C/Cr/RDAC2, Y/GDAC2 output Off
- dac set 2 mode : 17~25-pin's D/A converter (2) output signal control
01 or 11 : R/G/B output On (default)
10 : Y/Cr/Cb output On
00 : Y/C/CVBS output On

Sub-address 78~79 : Sub-carrier phase control (write only)



sc-ph9 : sub-carrier phase control
 sc-ph8 00_0000_0000 : sub-carrier phase 0 degree (default)
 sc-ph7 to
 sc-ph6 11_1111_1111 : sub-carrier phase 359 degree
 sc-ph5
 sc-ph4
 sc-ph3
 sc-ph2
 sc-ph1
 sc-ph0

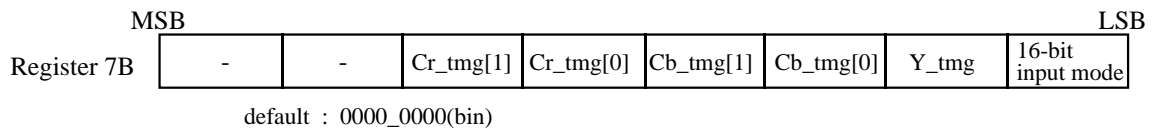
Sub-address 7A : Hsync delay control (write only)



h-delay10 : delay on Hsync with reference to DVIA/DVIB data
 h-delay9 0000_0000_000 : Hsync delay 0 delay
 h-delay8 to
 h-delay7 1111_1111_000 : Hsync delay +255 delay
 h-delay6
 h-delay5
 h-delay4
 h-delay3

Note : this h-delay can be also related with 71[3:0] register and can delay totally +2023 delay(1111_1111_111) in H/V or H/ Fsync slave mode.

Sub-address 7B : Digital Video Input Select Control (write only)



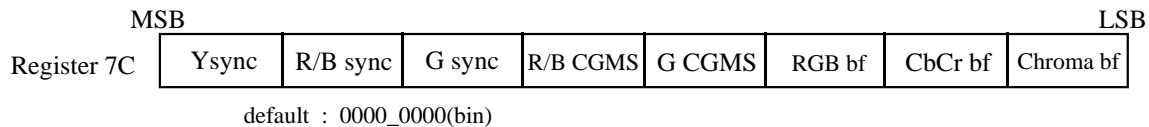
Cr_tmg : Cr clock timing delay in 16-bit Digital Input Mode
 00 : Cr clock delay 0 clock (default)
 01 : Cr clock delay +1 clock
 10 : Cr clock delay +2 clock
 11 : Cr clock delay +3 clock (See fig 3,4)

Cb_tmg : Cb clock timing delay in 16-bit Digital Input Mode
 00 : Cb clock delay 0 clock (default)
 01 : Cb clock delay +1 clock
 10 : Cb clock delay +2 clock
 11 : Cb clock delay +3 clock (See fig 3,4)

Y_tmg : Y clock timing delay in 16-bit Digital Input Mode
 0 : Y clock delay 0 clock (default)
 1 : Y clock delay +1 clock

16-bit input mode : 16-bit YY / CbCr Digital Video Input mode
 0 : 8-bit Multiplexed CbYCrY Digital Video Input mode (default)
 1 : 16-bit YY / CbCr Digital Video Input mode

Sub-address 7C : signal control 3(write only)



Y sync : Y sync Signal On/Off (Y/Cb/Cr mode only)
 0 : Y sync On (default)
 1 : Y sync Off

R/B sync : R/B sync signal On/Off
 0 : R/B sync Off (default)
 1 : R/B sync On

G sync : G sync signal On/Off
 0 : G sync Off (default)
 1 : G sync On

R/B CGMS : R/B CGMS data Insertion On/Off
 0 : CGMS data On
 1 : CGMS data off

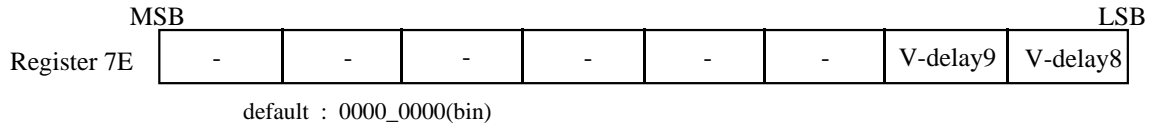
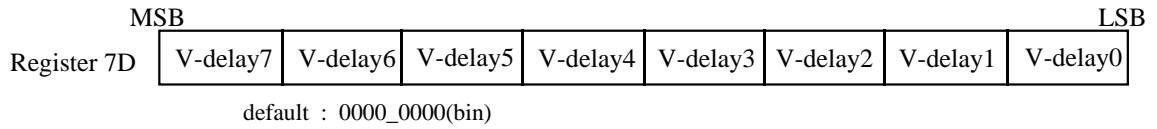
G CGMS : G CGMS data Insertion On/Off
 0 : CGMS data On
 1 : CGMS data off

RGB bf : RGB burst level On/Off
 0 : RGB bf data Off
 1 : RGB bf data On

CbCr bf : CbCr burst On/Off
 0 : Cb/Cr bf data Off
 1 : Cb/Cr bf data On

Chroma bf : Chroma burst On/Off
 0 : Chroma bf data On
 1 : Chroma bf data off

Sub-address 7D~7E : Vsync delay control (write only)



V-delay9 : delay on Vsync with reference to DVIA/DVIB data in slave mode
 V-delay8 0000_0000_00 : Vsync delay 0 delay
 V-delay7 to
 V-delay6 1111_1111_11 : Hsync delay +1023 delay
 V-delay5
 V-delay4
 V-delay3
 V-delay2
 V-delay1
 V-delay0

Sub-address 80~82: CGMS characters for Field1(Line20)/Field2(Line283) (write only)

NTSC only

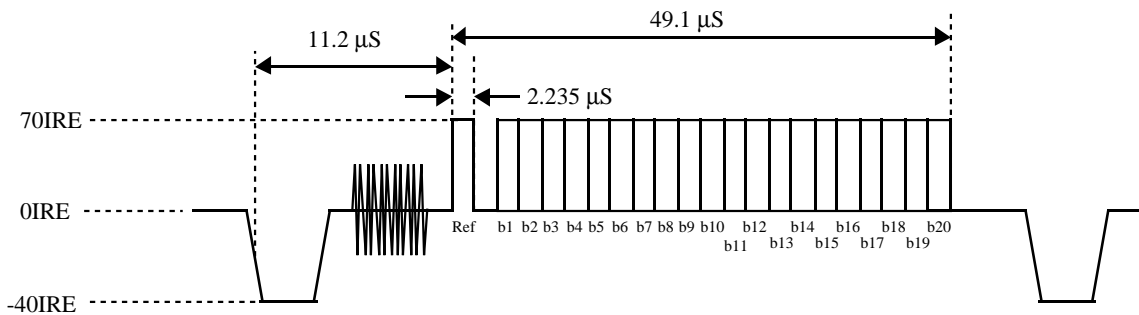
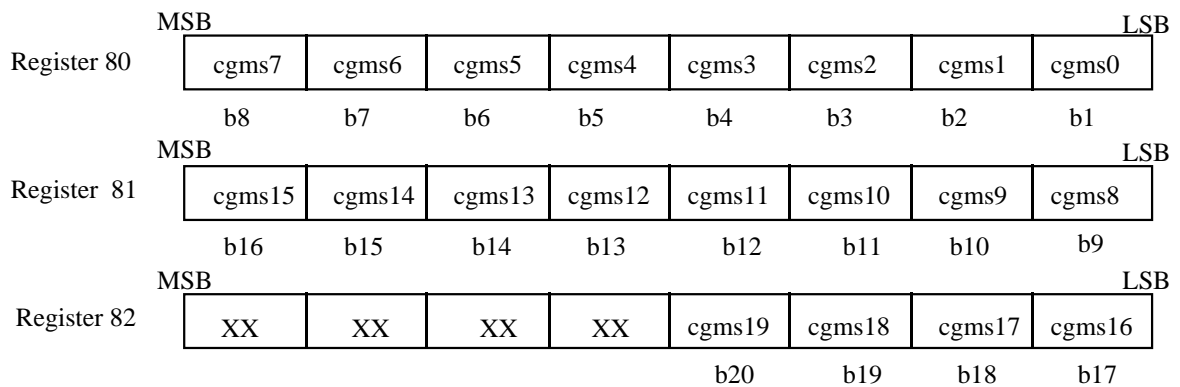


Fig 24 : CGMS wave form

Sub-address 80~81: WSS characters for Line23 (write only)

PAL only

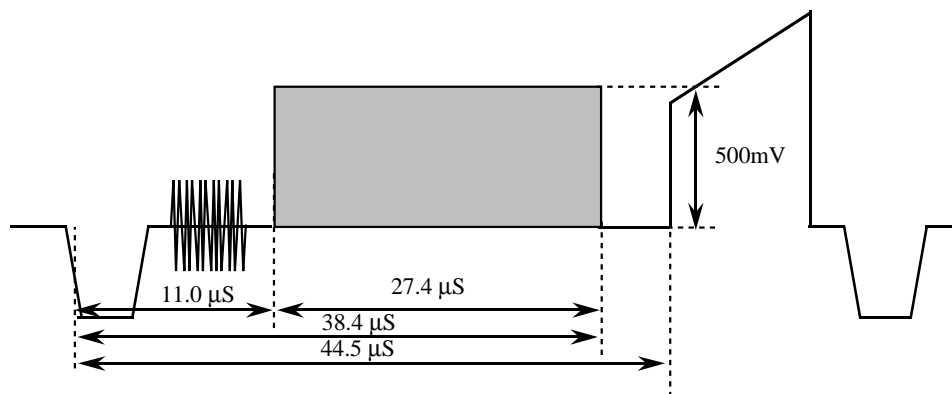
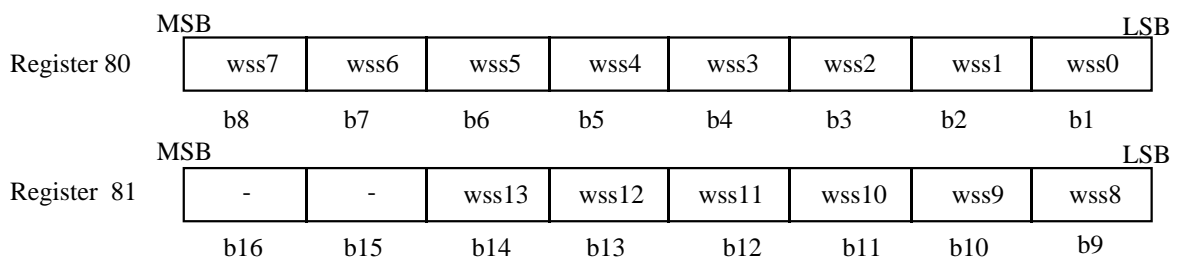
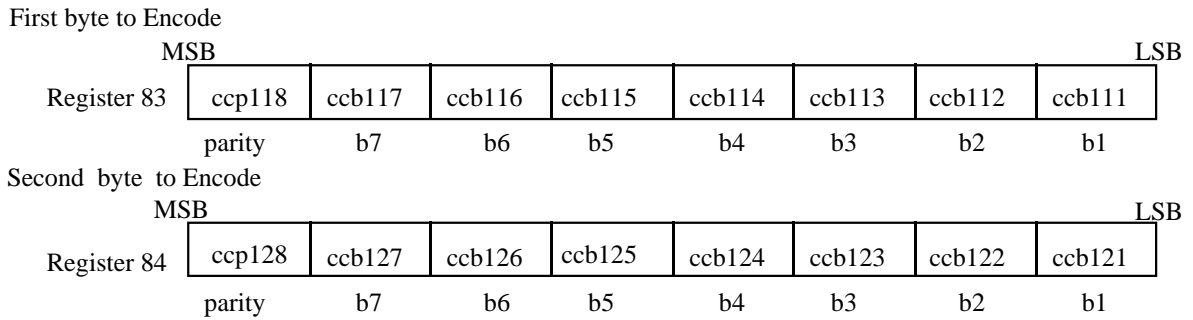


Fig 25 : WSS wave form

Sub-address 83~84 :closed caption characters/extended data for Field1(Line21) (write)



Sub-address 85~86 :closed caption character/extended data for Field2(Line284)

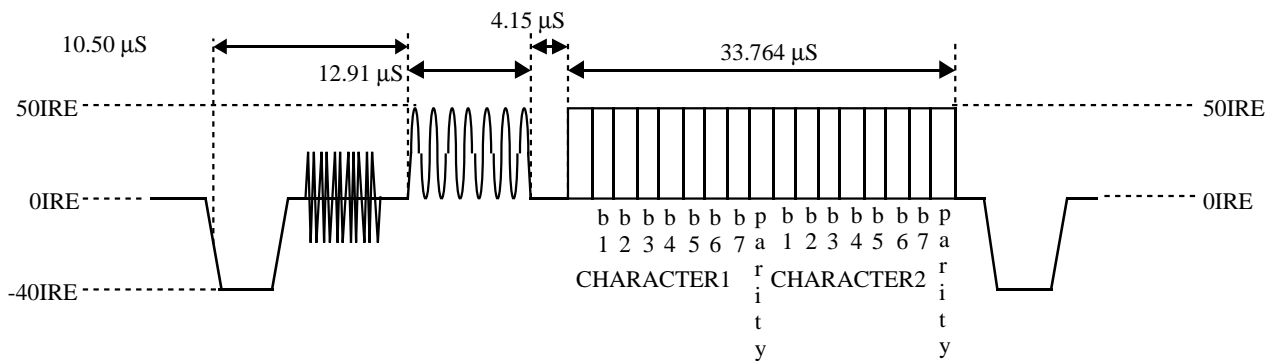
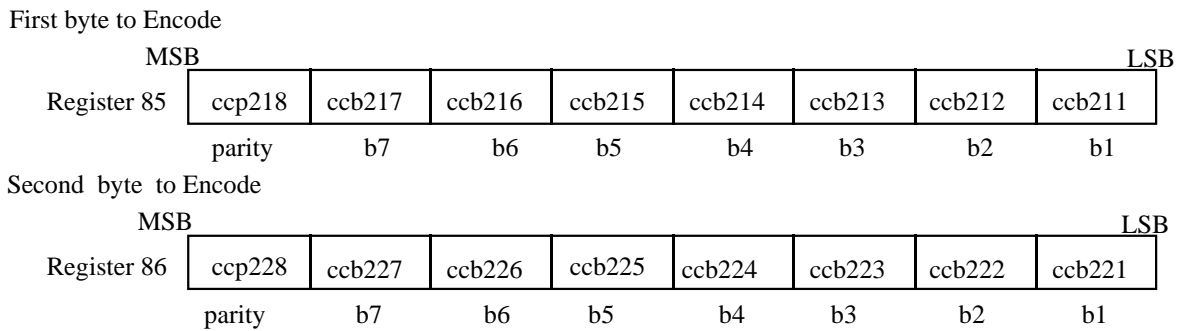


Fig 26 : Closed caption wave form

Note : This Closed Caption waveform is defined by when the register \$72 [3] = "1" is set.

sub-address 80, 81, 82, 83, 84, 85 and 86 (previous frame data) are double-buffered by Frame sync falling edge

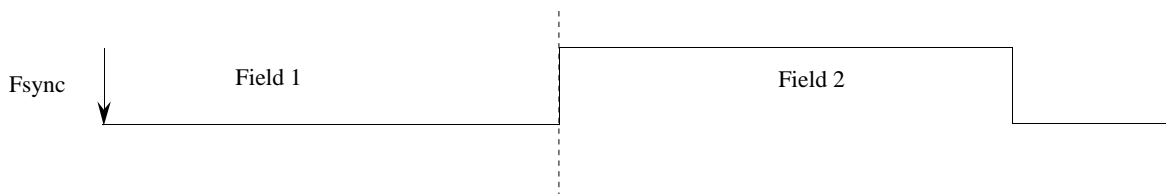
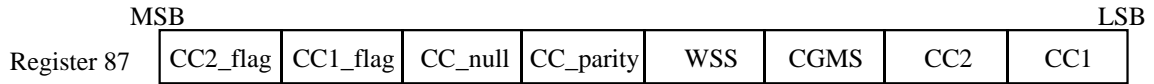


Fig 27 : VBI data update timing

Sub-address 87 :Closed caption/CGMS



default 00h

CC2_flag : Closed Caption Status Flag for field2/field1 (Read only)

CC1_flag 0 : Automatically set to " 1 " when 2-byte Closed Caption data are written, and then cleared to "0" when the data is send to doubled buffer
 1 : Do NOT work " 1 " to these bits. " 0 " is correct.

CC_null : Automatically set the null code when the data is send to doubled buffer

0 : Keep the current CC data in the resister.
 1 : Automatically set the null code in the CC data resister

CC_parity: CC Parity Generation On-Off

0 : Use parity bit in data. (default)
 1 : Automatically generate parity bit.

WSS : WSS information data insertion On-Off

0 : WSS information data insertion Off
 1 : WSS information data insertion On

CGMS : CGMS information data insertion On-Off

0 : CGMS information data insertion Off
 1 : CGMS information data insertion On

CC2 : closed caption/extended data for field2 encoding On-Off

0 : closed caption/extended data for field2 encoding Off
 1 : closed caption/extended data for field2 encoding On

CC1 : closed caption/extended data for field1 encoding

0 : closed caption/extended data for field1 encoding Off
 1 : closed caption/extended data for field1 encoding On

I2C-BUS Slave Receiver Sub-address map

70h:[7]	burst control (default 0:on)	6Eh[7:4]	n.a.
[6]	self counter reset switch (default 0:off)	6Eh[3]	Cb/Cr gain control
[5]	color bar select (default 0:Luma 100% Chroma 75%)	6Eh[2]	Y mode switch
[4]	vertical blanking switch(default 0:off)	6Eh[1:0]	M2/Beta Cam select
[3]	48 pin output mode select (Csync:1, Flame sync:0)		
[2]	F/Vsync select(default 0:Vsync)	6F[7:6]	n.a.
[1:0]	Master/Slave mode select(default 01:656_slave)	6F[5:0]	Interpolation filter switch
71h:[7]	interlaced / non-interlaced (default 0:interlaced)		
[6]	VBI input control on 48 pin (default 0:off)	7A[7:0]	hsync-delay control (In slave mode, is valid with 71h[2:0] register)
[5]	horizontal sync polarity (default 0)	7B[7:6]	n.a.
[4]	vertical sync polarity (default 0)	[5:2]	Cr/Cb clock timing delay in 16-bit digital input mode (default 00: clock delay 0)
[3]	frame sync polarity (default 0)		Y clock timing delay in 16-bit digital input mode (default 0: clock delay 0)
[2:0]	hsync delay control (default 100:0 clock delay) (In slave mode can use with 7A[7:0])	[1]	16-bit multiplexed CbYCrY digital video input mode (default 0: 8-bit YCrCb digital video input mode)
72h:[7]	sub-carrier phase synchronization(default 0)	[0]	Ysync signal On/Off(YCrCb mode only)(default 0: On)
[6]	Test mode (default 0:off)		R/Bsync signal On/Off(default 0: Off)
[5]	48 pin I/O switch(default 1:cysnc output)	7C[7]	Gsync signal On/Off(default 0: Off)
[4]	color bar generate(default 0:off)	[6]	R/B CGMS data insertion On/Off(default 0: On)
[3]	setup level control(default 1:7.5IRE)	[5]	G CGMS data insertion On/Off(default 0: On)
[2]	625lines50Hz/525Lines60Hz (default set PAL/NTSC pin)	[4]	RGB/CbCr burst On/Off(default 0: On)
[1:0]	PAL/NTSC (default set PAL/NTSC pin) 00:NTSC/M 01:PAL/BDGHI (10:PAL/M) (11:PAL/N)	[3]	Chroma burst On/Off(default 0: On)
		[2:1]	
		[0]	
73h[7:0]	VBI LUMA level register(default 80h)	7D[7:0]	delay on Vsync with reference to DVIA/DVIB data in slave mode
74h[7:0]	Burst U_register(default 79d:ntsc/157d:PAL)	7E[7:2]	n.a.
75h[7:0]	Burst V_register(default 128d:ntsc/107d:PAL)	[1:0]	delay on Vsync with reference to DVIA/DVIB data in slave mode
76h[7]	Cr on/off (default 0:on)		
[6]	Cb on/off (default 0:on)	7Fh	DVE Version number
[5]	Luma on/off(default 0:on) (default 0: on)	80~82h	CGMS characters for field1(line20)/field2(line283)
[4:2]	1pin dac/4pin dac/7pin dac on/off(default 0: on)	80~81h	WSS characters for field1(line23)
[1:0]	1st set D/A converter output signal control (default 00 : CBVS/Y/C output)	83h[7:0]	CC character1(line21) (default 'h80)
77h[7:5]	B/R/G signal control (default 0: On)	84h[7:0]	CC character2(line21) (default 'h80)
[4:2]	17pin dac/20pin dac/23pin dac on/off(default 0: on)	85h[7:0]	CC character1(line284) (default 'h80)
[1:0]	2ndt set D/A converter output signal control (default 01 : R/G/B output)	86h[7:0]	CC character2(line284) (default 'h80)
		87h[7:6]	Closed Caption Status Flag for field2
78h[7:0]	sub-carrier phase control(default 00h)	[5]	Automatic set to null code(Closed Caption data)
79h[1:0]	sub-carrier phase control(default 00)	[4]	Automatic generate CC parity bit (default 0: off)
79h[7:2]	n.a.	[3]	WSS information data insertion on/off (default 0: off)
		[2]	CGMS on/off (default 0: off)
		[1]	CC closed caption/extended data for field2 encoding (default 0: off)
		[0]	CC closed caption/extended data for field1 encoding (default 0: off)

<<<<<<< I2C-BUS Format >>>>>>>

** WRITE MODE **

S | Slave_address(W) | A | Sub_address | A | Data0 | A | ... | DataN | A | P

S	Start condition
Slave_address	40(hex) or 1E(hex)
A	Acknowledge generated by DVE
Sub_address	Sub_address register
Data0	First data
DataN	Continued data(address is auto incremented)
P	Stop condition

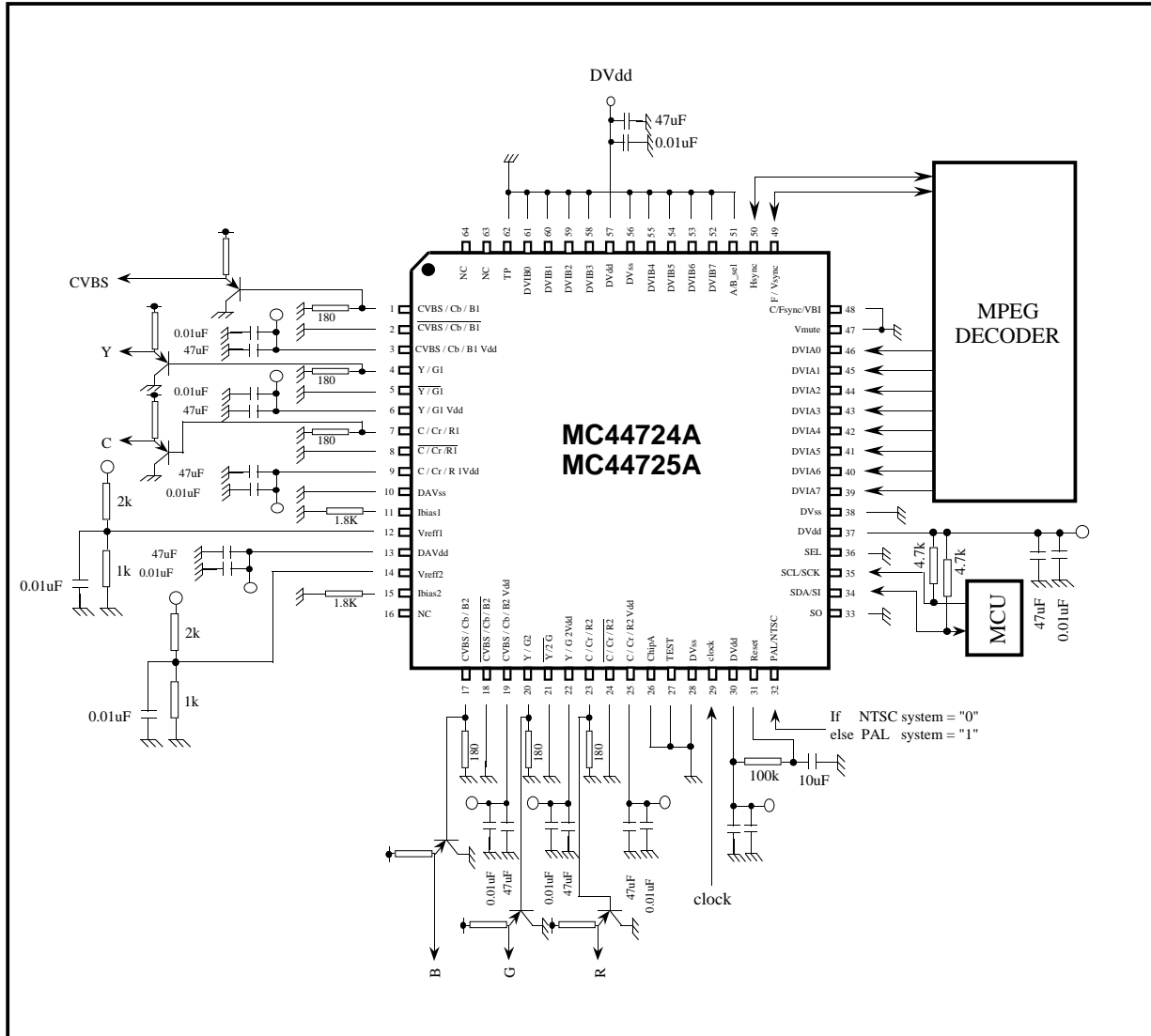
<<<<<<< SPI-Bus Format >>>>>>>

** WRITE MODE **

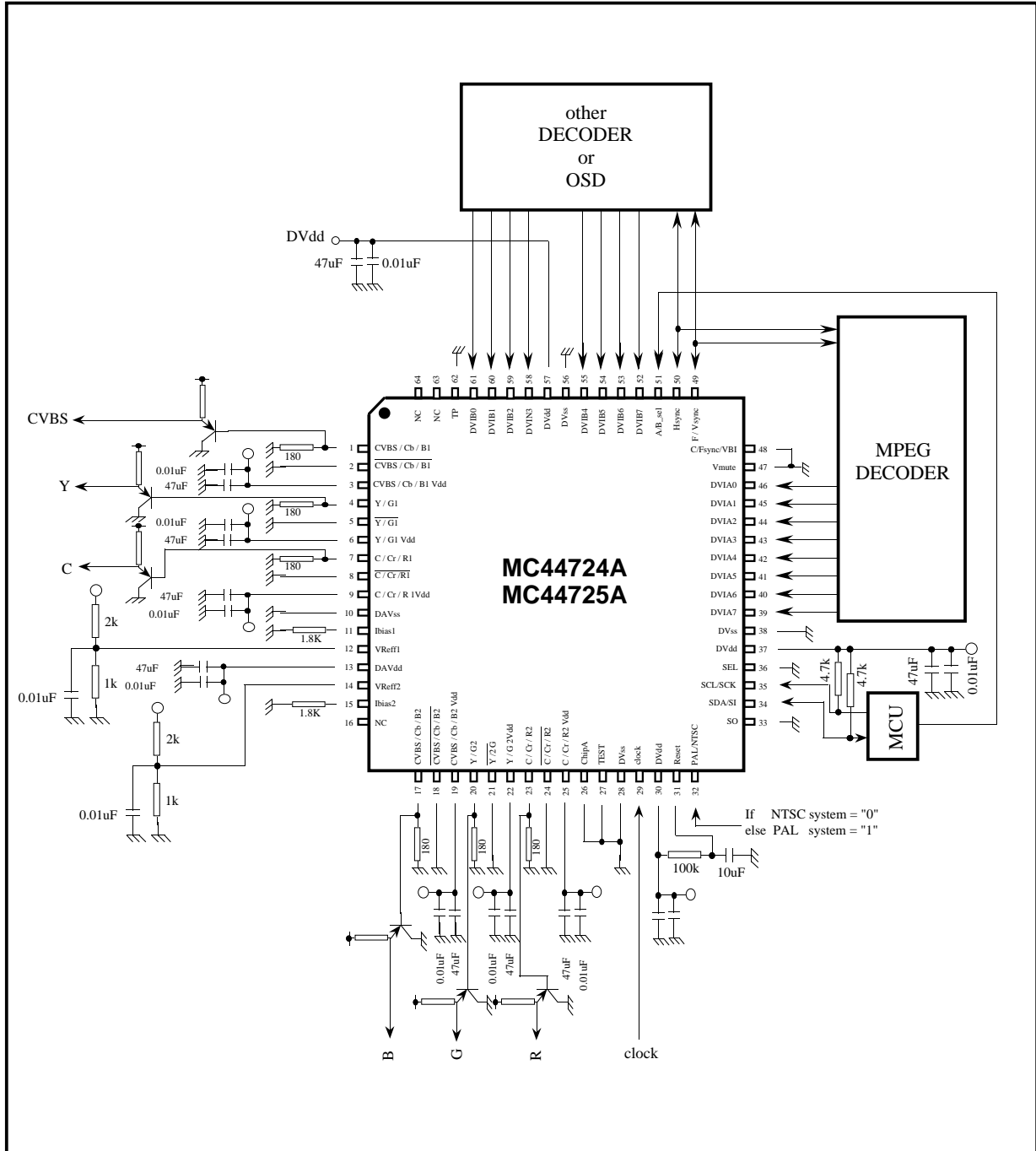
S | Write Command | Sub_address | Data0 | ... | DataN | P

S	Chip select on (High to Low)
Write Command	40(hex) or 1E(hex)
Sub_address	Sub_address byte
Data0	First data
DataN	Continued data byte(address is auto incremented)
P	Chip select off (Low to High)

[Application Diagram 1]



[Application Diagram 2]



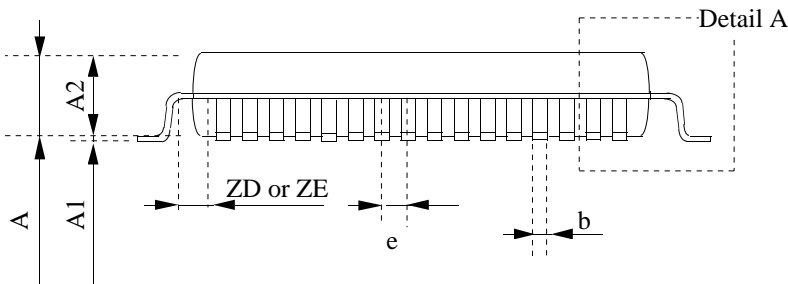
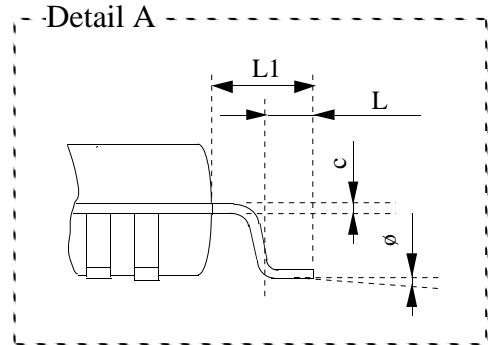
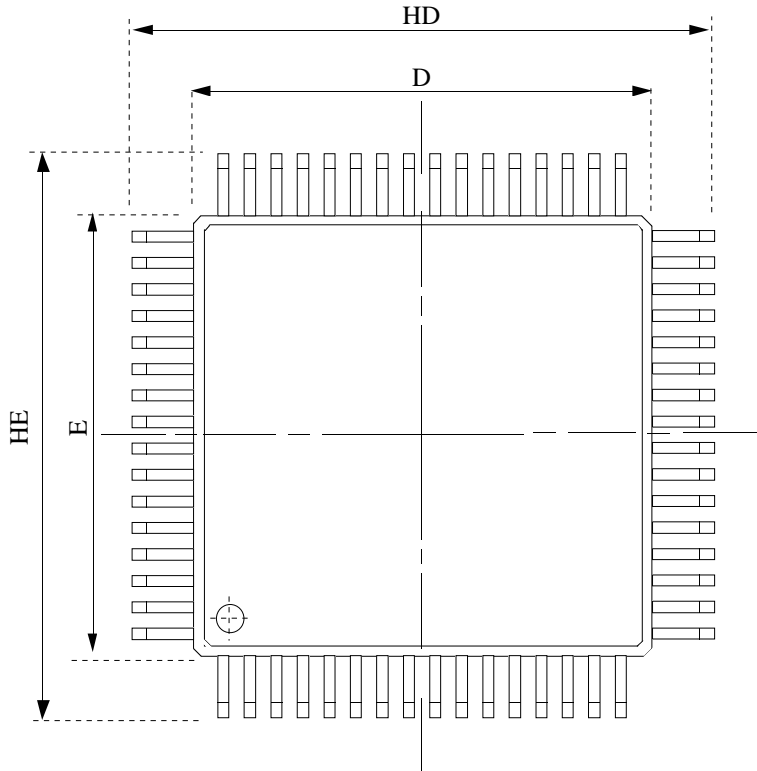
For More Information On This Product

Go to: www.freescale.com

MC44724A/5A Rev 0.05 07/15/98

This document contains information on a new product. Specifications and information herein are subject to change without notice.

64-VQFP Package



	min	max
A	-	1.70
A1	0.05	0.15
A2	1.40TYP	
b	0.18	0.27
c	0.10	0.20
D	9.90	10.1
E	9.90	10.1
e	0.50	
HD	11.80	12.20
HE	11.80	12.20
L	0.50TYP	
L1	0.80	1.20
phi	0	10
y	-	0.10
ZD	1.25TYP	
ZE	1.25TYP	

unit : mm

RoHS-compliant and/or Pb-free versions of Freescale products have the functionality and electrical characteristics of their non-RoHS-compliant and/or non-Pb-free counterparts. For further information, see <http://www.freescale.com> or contact your Freescale sales representative.

For information on Freescale's Environmental Products program, go to <http://www.freescale.com/epp>.



For More Information On This Product

Go to: www.freescale.com

MC44724A/5A Rev 0.05 07/15/98

This document contains information on a new product. Specifications and information are subject to change without notice.