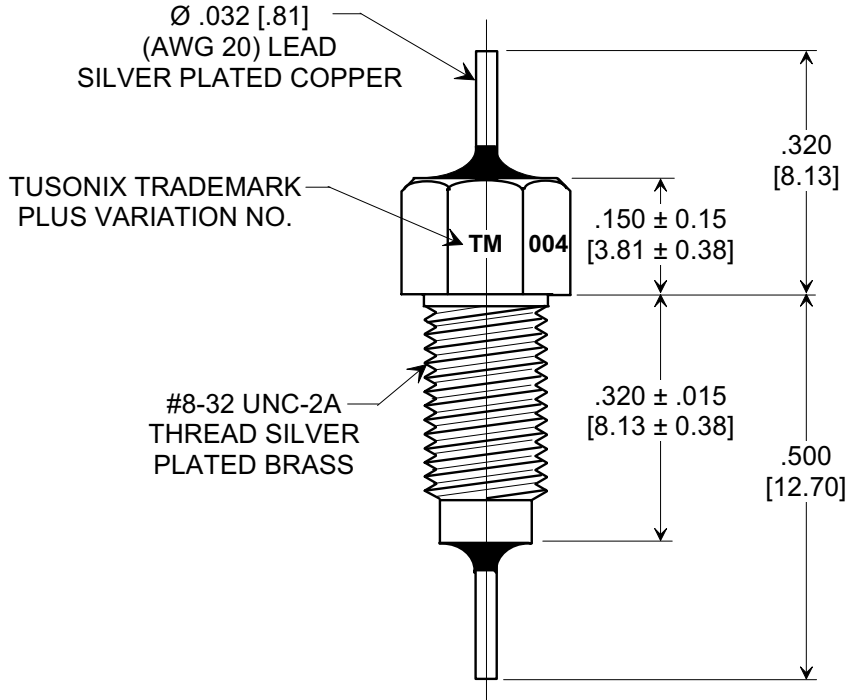
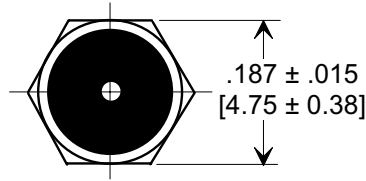
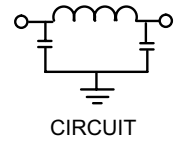
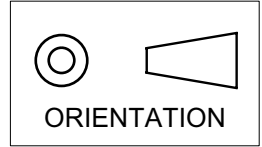


**MARKETING SALES DRAWING**  
**DIMENSIONS IN INCHES - DO NOT SCALE THIS DRAWING**  
**DIMENSIONS IN METRIC [ ]**

This drawing is the property of Tusonix, Inc., and may not be used, reproduced, published or disclosed to others without expressed authorization by Tusonix Inc.

**Electrical Testing**  
**per Tusonix standard**  
**test plans and Mil-Std-202**  
**Test Methods.**



**NOTES:**

- TUSONIX STANDARD PART NUMBER: 4251-004.  
 TUSONIX RoHS COMPLIANT PART NUMBER: 4251-004 LF.  
 CUSTOMER MUST SPECIFY STANDARD OR RoHS PART NUMBER WHEN ORDERING.
- PART MARKING: TRADEMARK AND VARIATION NUMBER ON HEX FLATS.  
 STANDARD PART: BLACK INK. RoHS PART: GREEN INK.
- SUPPLIED WITH SILVER PLATED COPPER ALLOY, HEX NUT AND INTERNAL TOOTH LOCK WASHER.

MIN. CAP.	125°C WORKING VOLTAGE	CURRENT Vdc	IR MIN.	DWV	MINIMUM NO LOAD INSERTION LOSS (dB) @ 25°C PER MIL-STD-220				
					1 MHz	10 MHz	100 MHz	1 GHz	10 GHz
28,000 pF	100 VDC	10 A	10 G Ω	300 VDC	10	38	75	75	75

<b>X-2015 Rev-0</b>	<b>REVISION RECORD</b>						--TOLERANCES-- Unless Otherwise Specified	Title			
	0	Original Release C.O. 6611	1	6667	2	940616-6		DECIMAL ± .031 [0.79]	<b>MULTILAYER BUSHING STYLE EMI FILTER</b>		
	1	DIM'S REVISED, TITLE CHNGD. E.C. 05-26-92	2	6667	3	19981202-6-01	ANGLES ±	Drawn	S.M. 12-03-98	Scale	4 X
	2	WVDC WAS 70. E.C. 07-11-94	3	940616-6	4	20020624-5-02	<b>TUSONIX</b> TUCSON, ARIZONA	Approved		E.F. 12-03-98	
	3	RDN TO COMP FMT & ADDED NOTE & SILVER PLATED. S.M. 12-03-98	4	19981202-6-01	5	20050421-6-02		<b>A</b>	4251-004		
	4	DIM'S IN METRIC & IR MIN. DWV ADDED COPPER ALLOY WAS PHOSPHOR BRONZE	5	20020624-5-02	6	20060331-5-02					
5	ADDED NOTES 1 & 2. S.M. 04-28-05	6	20050421-6-02								
6	ON BUSHING BRASS WAS STEEL. S.M. 04-04-06										