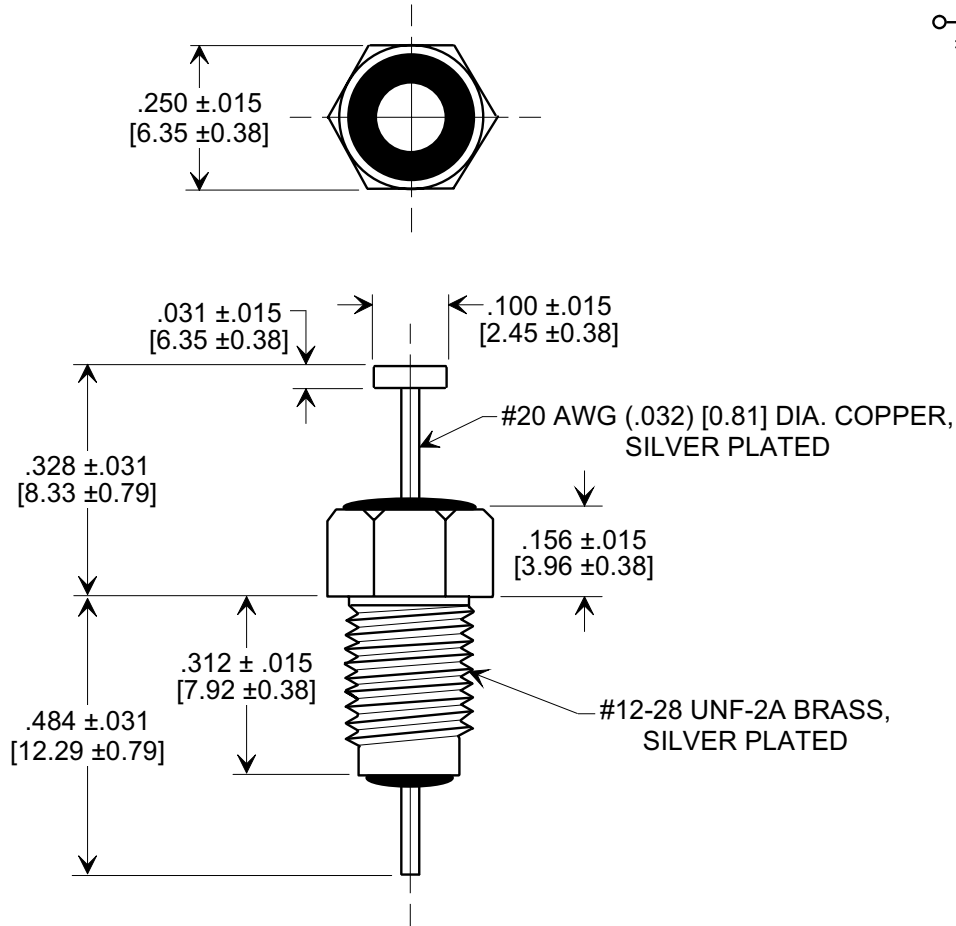
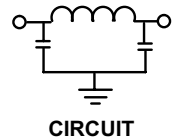
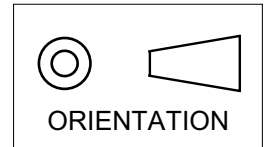


MARKETING SALES DRAWING

DIMENSIONS IN INCHES - DO NOT SCALE THIS DRAWING
DIMENSIONS IN METRIC - []

Electrical Testing
 per Tusonix standard
 test plans and Mil-Std-202
 Test Methods.



NOTES:

- SUPPLIED WITH SILVER PLATED HEX NUT AND LOCK WASHER.
- TUSONIX STANDARD PART NUMBER: 4202-021.
 TUSONIX RoHS COMPLIANT PART NUMBER: 4202-021 LF.
 CUSTOMER MUST SPECIFY STANDARD OR RoHS PART NUMBER WHEN ORDERING.
- PART MARKING: TRADEMARK AND VARIATION NUMBER ON HEX FLATS.
 STANDARD PART: BLACK INK. RoHS PART: GREEN INK.

MIN. CAP. (pF)	WORKING VOLTAGE (WVdc)		CURRENT (Idc)	DWV (VDC)	I.R. MIN. @ 100 VDC	MINIMUM NO LOAD INSERTION LOSS (dB) AT 25°C PER MIL-STD -220			
	85°C	125°C				10 MHz	100 MHz	1 GHz	10 GHz
1500	350	200	10 A	700	10 G	5	45	70	70

X-2015 Rev-0 REVISION RECORD Original Release C.O. 1617 CURRENT UNIT "A" ADDED. L.E. 8-20-85 2595 RDN TO COMP FMT & ADDED METRIC. S.M. 02-12-02 20020213-3-09 ADDED NOTES 2, 3 & REF. TO PLATING ON LEAD & BUSHING. S.M. 05-18-05 20050503-6-13	0	--TOLERANCES-- Unless Otherwise Specified DECIMAL ± ANGLES ±	Title BUSHING STYLE EMI FILTER		
	1		Drawn	S.M. 02-12-02	Scale ₃ X
	2		Approved	T.C. 02-12-02	
	3		TUSONIX TUCSON, ARIZONA		A