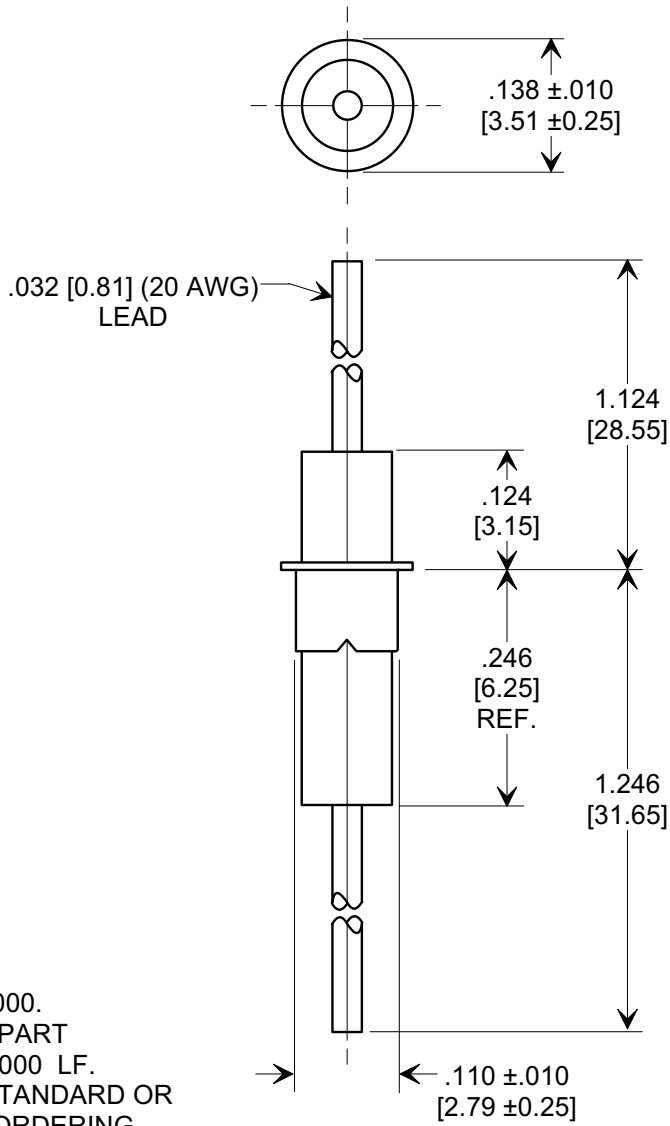
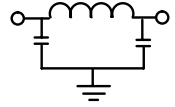
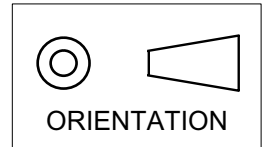


MARKETING SALES DRAWING
DIMENSIONS IN INCHES - DO NOT SCALE THIS DRAWING
DIMENSIONS IN METRIC - []

Electrical Testing
per Tusonix standard
test plans and Mil-Std-202
Test Methods.



NOTES:

1. TUSONIX STANDARD PART
NUMBER: 4100-000.
TUSONIX RoHS COMPLIANT PART
NUMBER: 4100-000 LF.
CUSTOMER MUST SPECIFY STANDARD OR
RoHS PART NUMBER WHEN ORDERING.
2. LEAD FINISH: STANDARD PART #: SILVER PLATED.
RoHS PART #: SILVER PLATED.
3. EYELET FINISH: STANDARD PART #: 60/40 SOLDER PLATED.
RoHS PART #: SILVER PLATED.
4. PART MARKING: STANDARD, NO MARKING.
RoHS PART: GREEN DOT ON INSULATION BAND,
TYPICAL LOCATION.

MIN. CAP. pF	WORKING VOLTAGE (WVDC)		CURRENT Idc.	I.R. MIN. @ 100 (VDC.)	DWV (VDC)	MINIMUM NO LOAD INSERTION LOSS (dB) AT 25°C PER MIL-STD-220			
	85°C	125°C				10 MHz	100 MHz	1 GHz	10 GHz
1500	250	125	10A	10 G	500	6	45	60	60

X-2015 Rev-0	REVISION RECORD						--TOLERANCES-- Unless Otherwise Specified	Title EYELET STYLE EMI FILTER			
	0	1	2	3	4	5					
	Original Release C.O.	WAS SK 6644-060-S. L.E. 01-13-84	DIMS & TOLS REV B. RELEASED. L.E. 01-08-85	CURRENT UNIT "A" ADDED L.E. 08-20-85	RDN TO COMP FMT. & METRIC ADDED. S.M. 05-17-00	20000517-4-01 ADDED I.R. & DWV. S.M. 10-11-04	20041011-3-01 ADDED NOTES. S.M. 06-06-5	20050526-4-05	Drawn S.M. 05-17-00	Scale 5 X	
								Approved B.M. 05-17-00			
								TUSONIX TUCSON, ARIZONA	A	4100-000	