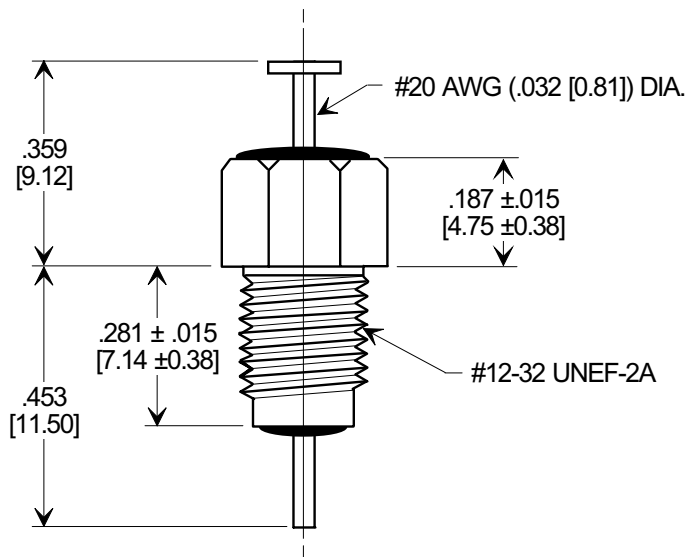
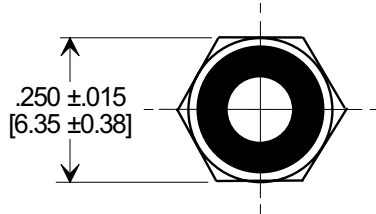
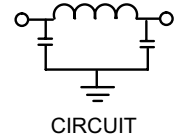
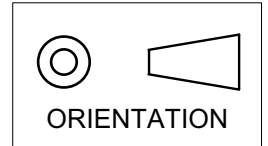


# MARKETING SALES DRAWING

DIMENSIONS IN INCHES - DO NOT SCALE THIS DRAWING  
 DIMENSIONS IN METRIC - [ ]

Electrical Testing  
 per Tusonix standard  
 test plans and Mil-Std-202  
 Test Methods.



1500	350	200	10A	5	45	70	70
	85°C	125 °C		10 MHz	100 MHz	1 GHz	10 GHz
MIN. CAP. (pF)	WORKING VOLTAGE (VDC)		CURRENT (Idc)	MINIMUM NO LOAD INSERTION LOSS (dB) AT 25°C PER MIL-STD -220			

X-2015 Rev-0 <b>REVISION RECORD</b>	0	Original Release C.O.	--TOLERANCES-- Unless Otherwise Specified  DECIMAL ± .031 [0.79]  ANGLES ±	Title		<b>BUSHING STYLE EMI FILTER</b>		
	1	WAS SK 6644-001-S. L.E. 01-13-84		Drawn	S.M. 02-02-01			Scale
	2	DIM'S & TOL'S REV'D RELEASED. S.M. 02-02-01		Approved	T.C. 02-02-01		<b>A</b>	
	3	1653 CURRENT UNIT "A" ADDED. L.E. 08-20-85				<b>4202-001</b>		
4	2585 RDN TO COMP FMT & ADDED METRIC. S.M. 02-02-01	<b>TUSONIX</b> TUCSON, ARIZONA						