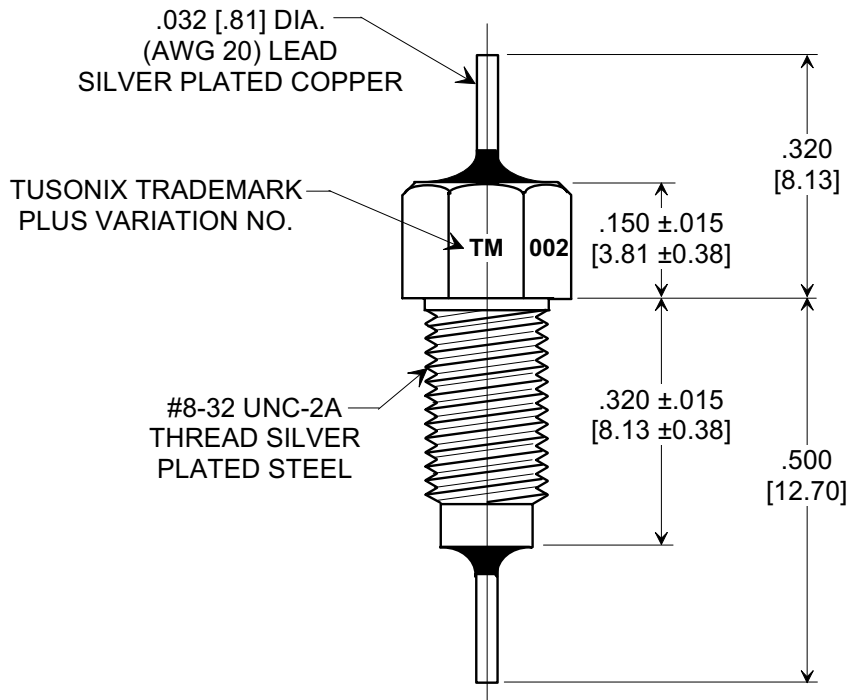
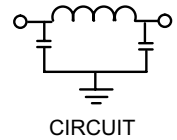
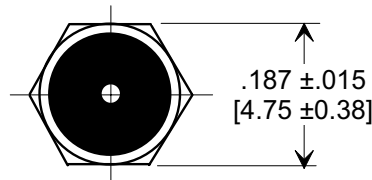
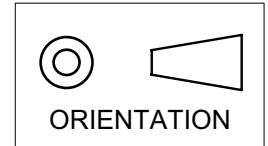


**MARKETING SALES DRAWING**  
**DIMENSIONS IN INCHES - DO NOT SCALE THIS DRAWING**  
**DIMENSIONS IN METRIC [ ]**

Electrical Testing  
per Tusonix standard  
test plans and Mil-Std-202  
Test Methods.



**NOTES:**

- TUSONIX STANDARD PART NUMBER: 4251-002.  
TUSONIX RoHS COMPLIANT PART NUMBER: 4251-002 LF.  
CUSTOMER MUST SPECIFY STANDARD OR RoHS PART NUMBER WHEN ORDERING.
- PART MARKING: TRADEMARK AND VARIATION NUMBER ON HEX FLATS.  
STANDARD PART: BLACK INK. RoHS PART: GREEN INK.
- SUPPLIED WITH SILVER PLATED COPPER ALLOY HEX NUT AND INTERNAL TOOTH LOCK WASHER.

MIN. CAP.	125°C WORKING VOLTAGE	CURRENT Vdc	IR MIN.	DWV	MINIMUM NO LOAD INSERTION LOSS (dB) @ 25°C PER MIL-STD-220				
					1 MHz	10 MHz	100 MHz	1 GHz	10 GHz
12,000 pF	125 VDC	10 A	10 G Ω	500 VDC	5	28	65	70	70

X-2015 Rev-0	<b>REVISION RECORD</b>				--TOLERANCES-- Unless Otherwise Specified	Title	
	Original Release C.O. <b>6611</b>	<b>1</b>	RDN TO COMP FMT & ADDED .015 TOL 3 PLCS. S.M. 02-28-02	<b>2</b>		<b>MULTILAYER BUSHING STYLE EMI FILTER</b>	
	DIM'S REVISED, TITLE CHNGD. E.C. 05-26-92	<b>6667</b>		<b>3</b>	Drawn S.M. 02-28-02 Scale 4 X		
				<b>4</b>	Approved T.C. 02-28-02		
					<b>TUSONIX</b> TUCSON, ARIZONA	<b>A</b>	<b>4251-002</b>