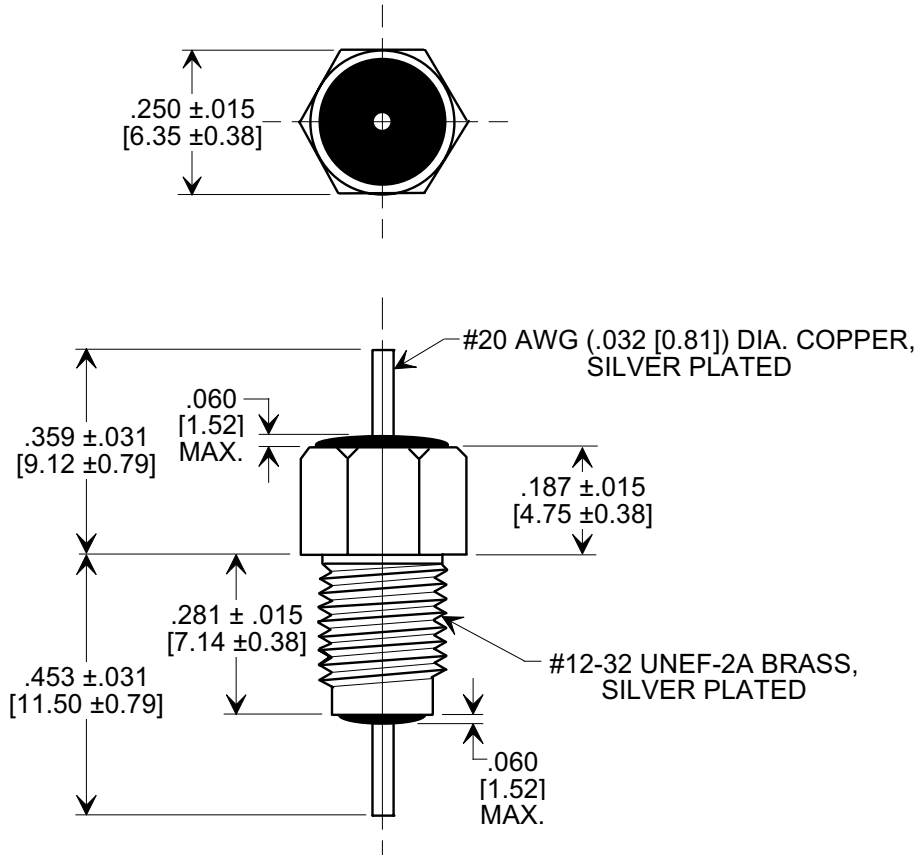
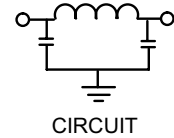
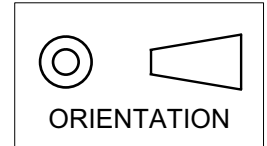


# MARKETING SALES DRAWING

**DIMENSIONS IN INCHES - DO NOT SCALE THIS DRAWING**  
**DIMENSIONS IN METRIC - [ ]**

Electrical Testing  
 per Tusonix standard  
 test plans and Mil-Std-202  
 Test Methods.



**NOTES:**

- SUPPLIED WITH SILVER PLATED HEX NUT AND LOCK WASHER.
- TUSONIX STANDARD PART NUMBER: 4202-000.  
 TUSONIX RoHS COMPLIANT PART NUMBER: 4202-000 LF.  
 CUSTOMER MUST SPECIFY STANDARD OR RoHS PART NUMBER WHEN ORDERING.
- PART MARKING: TRADEMARK AND VARIATION NUMBER ON HEX FLATS.  
 STANDARD PART: BLACK INK. RoHS PART: GREEN INK.

MIN. CAP. (pF)	WORKING VOLTAGE (WVdc)		CURRENT (Idc)	DWV (VDC)	I.R. MIN. @ 100 VDC	MINIMUM NO LOAD INSERTION LOSS (dB) AT 25°C PER MIL-STD -220			
	85°C	125°C				10 MHz	100 MHz	1 GHz	10 GHz
1500	350	200	10 A	700	10 G	5	45	70	70

X-2015 Rev-0	<b>REVISION RECORD</b>					--TOLERANCES-- Unless Otherwise Specified	Title <b>BUSHING STYLE EMI FILTER</b>						
	0	1	2	3	4					DECIMAL ±			
	Original Release C.O.	WAS SK 6644-000-S. L.E. 01-13-84	DIM'S & TOL'S REV'D RELEASED. L.E. 1-8-85	1653	CURRENT UNIT "A" ADDED. L.E. 08-20-85	2595	RDN TO COMP FMT & ADDED METRIC. S.M. 02-12-02	2002013-3-08	ADDED NOTES 2 & 3. REF TO PLATING ON LEAD & BUSHING ADDED. S.M. 05-18-05	20050503-6-10	ANGLES ±	Drawn S.M. 02-12-02	Scale 3 X
	Approved T.C. 02-12-02												
	<b>TUSONIX</b> TUCSON, ARIZONA						<b>A</b>	<b>4202-000</b>					