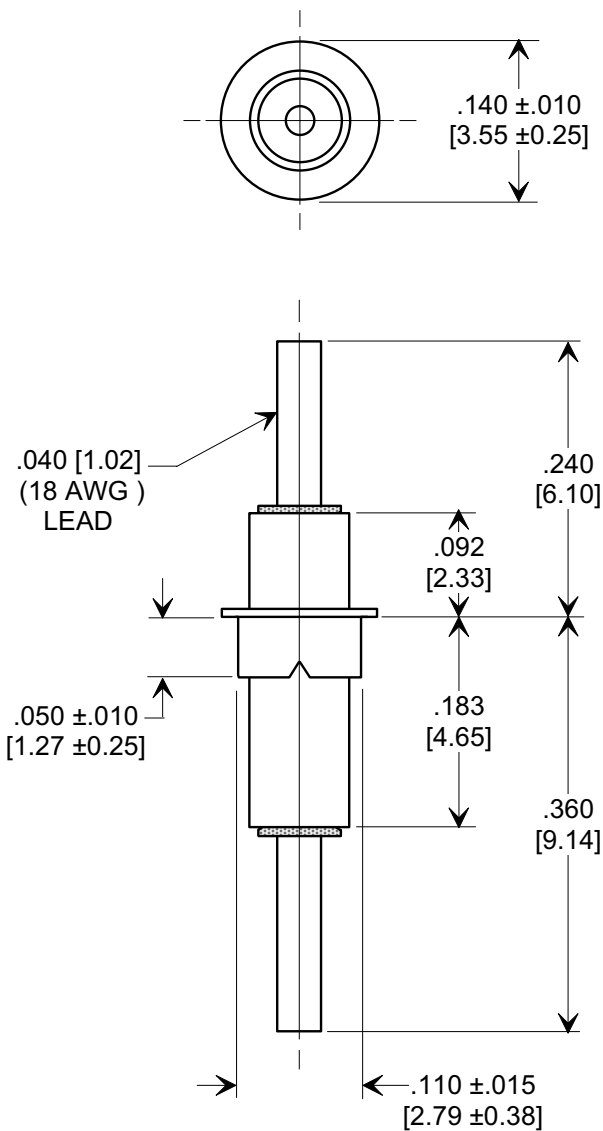
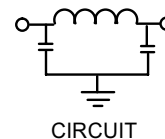
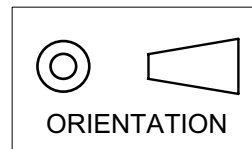


Electrical Testing  
per Tusonix standard  
test plans and Mil-Std-202  
Test Methods.

**MARKETING SALES DRAWING**  
DIMENSIONS IN INCHES - DO NOT SCALE THIS DRAWING  
DIMENSIONS IN METRIC - [ ]



MIN. CAP. pF	WORKING VOLTAGE		I.R. MIN. @ 100 (VDC.)	DWV (VDC)	CURRENT Idc.	MINIMUM NO LOAD INSERTION LOSS (dB) AT 25°C PER MIL-STD-220			
	85°C	125°C				10 MHz	100 MHz	1 GHz	10 GHz
3000	125	50	10 G Ω	250	15	7	50	65	60

X-2015 Rev-0	<b>REVISION RECORD</b>		<b>TUSONIX</b> TUCSON, ARIZONA	--TOLERANCES-- Unless Otherwise Specified		Title <b>EYELET STYLE EMI FILTER</b>	
	Original Release C.O. <b>2910</b>	<b>0</b>		DECIMAL ± .031 [0.79]			
	RND TO COMP FMT. S.M. 07-13-00	<b>20000717-5-07</b>		ANGLES ±		Drawn S.M. 07-13-00	Scale 6 X
	ADDED DIM. .050, DWV & I.R. DIM. .140 WAS .138, .092 WAS .100 & .183 WAS .196. S.M. 01-08-04	<b>20040108-2-01</b>		<b>A</b>		Approved T.C. 07-13-00	<b>4100-003</b>