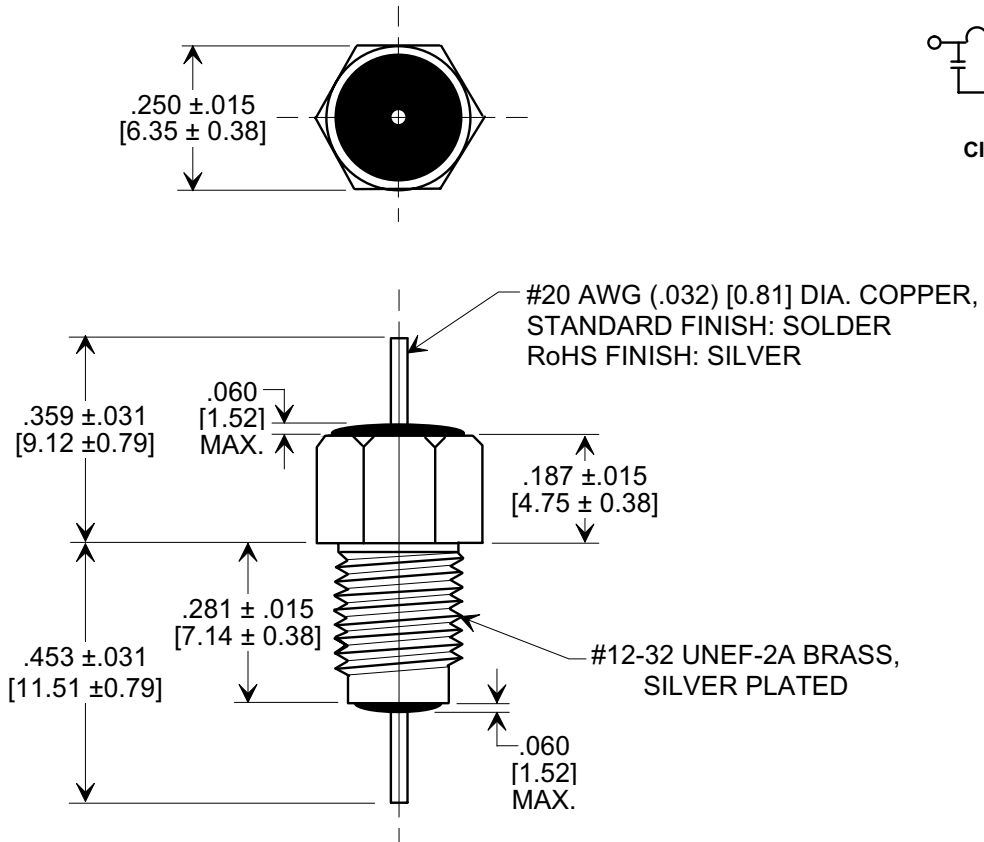
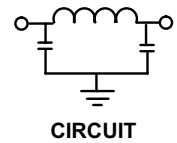
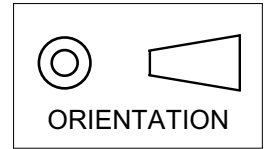


MARKETING SALES DRAWING
DIMENSIONS IN INCHES - DO NOT SCALE THIS DRAWING
DIMENSIONS IN METRIC - []

Electrical Testing
per Tusonix standard
test plans and Mil-Std-202
Test Methods.



NOTES:

- SUPPLIED WITH SILVER PLATED HEX NUT AND LOCK WASHER.
- TUSONIX STANDARD PART NUMBER: 4202-050.
TUSONIX RoHS COMPLIANT PART NUMBER: 4202-050 LF.
CUSTOMER MUST SPECIFY STANDARD OR RoHS PART NUMBER WHEN ORDERING.
- PART MARKING: TRADEMARK AND VARIATION NUMBER ON HEX FLATS.
STANDARD PART: BLACK INK. RoHS PART: GREEN INK.

MIN. CAP. (pF)	WORKING VOLTAGE (WVdc)		CURRENT (Idc)	DWV (VDC)	I.R. MIN. @ 100 VDC	MINIMUM NO LOAD INSERTION LOSS (dB) AT 25°C PER MIL-STD -220			
	85°C	125°C				10 MHz	100 MHz	1 GHz	10 GHz
5000	200	100	10 A	400	10 G	20	65	70	70

X-2015 Rev-0 REVISION RECORD Original Release C.O. 1653 CURRENT UNIT "A" ADDED. L.E. 8-20-85 2595 RDN TO COMP FMT & ADDED METRIC. 02-12-02 20020213-3-10 ADDED NOTES 2 & 3. ADDED LEAD & BUSHING FINISH. S.M. 05-19-05 20050503-6-25	--TOLERANCES-- Unless Otherwise Specified DECIMAL ±		Title BUSHING STYLE EMI FILTER	
	ANGLES ±		Drawn S.M. 02-12-02 Scale ₃ X	
	TUSONIX TUCSON, ARIZONA		Approved T.C. 02-12-02	
	A		4202-050	