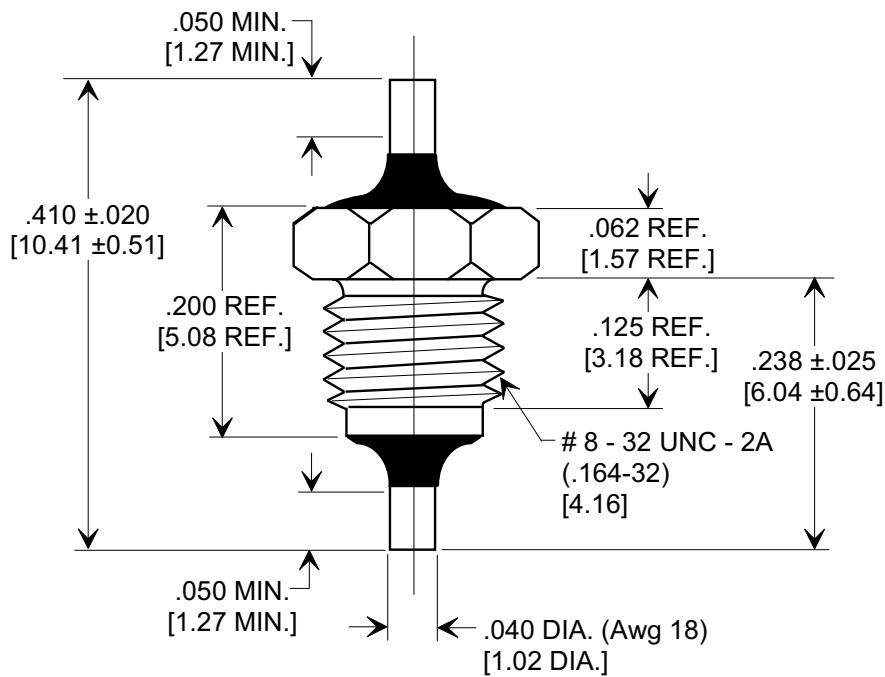
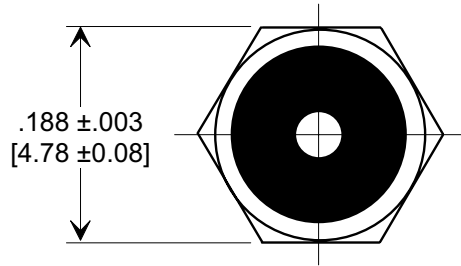
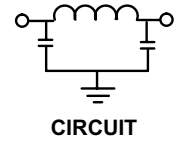
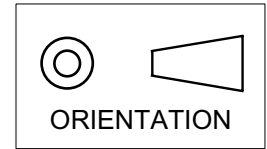


MARKETING SALES DRAWING
DIMENSIONS IN INCHES - DO NOT SCALE THIS DRAWING
DIMENSIONS IN METRIC - []

Electrical Testing
per Tusonix standard
test plans and Mil-Std-202
Test Methods.



65	125 VDC	15 A	3	16	35	42
MIN. CAP. (pF)	125° WORKING VOLTAGE	CURRENT VDC	150 MHz	1 GHz	5 GHz	10-18 GHz
			MINIMUM NO LOAD INSERTION LOSS (dB) AT 25°C PER MIL-STD-220			

X-2015 Rev-0	REVISION RECORD	--TOLERANCES-- Unless Otherwise Specified DECIMAL ± .031 [.79] ANGLES ±	Title			
	Original Release C.O.		EMI FILTER MIL 15733/44.0003			
	WAS SK 7094-003-5. E.C. 6-14-93					
	930528-2		Drawn	S.M. 05-22-01	Scale	6 X
	DIMS. REV. & ADDED. E.C. 5-11-94		Approved	T.C. 05-22-01		
940217-3	TUSONIX TUCSON, ARIZONA		A			
RDN TO COMP FMT. ADDED DIM. .050 & .238. DEL. DIM .013 S.M. 05-22-01	4205-501					
20010516-2-04						
CORRECT REV. RECORD. S.M. 05-30-01						
20010530-2-01						
REVISED TITLE. S.M. 10-11-01						
20011005-5-05						
INSERTION LOSS REV'D 16,35,42 WERE 40,50,50 L.E. 03-21-02						
20020321-2-01						