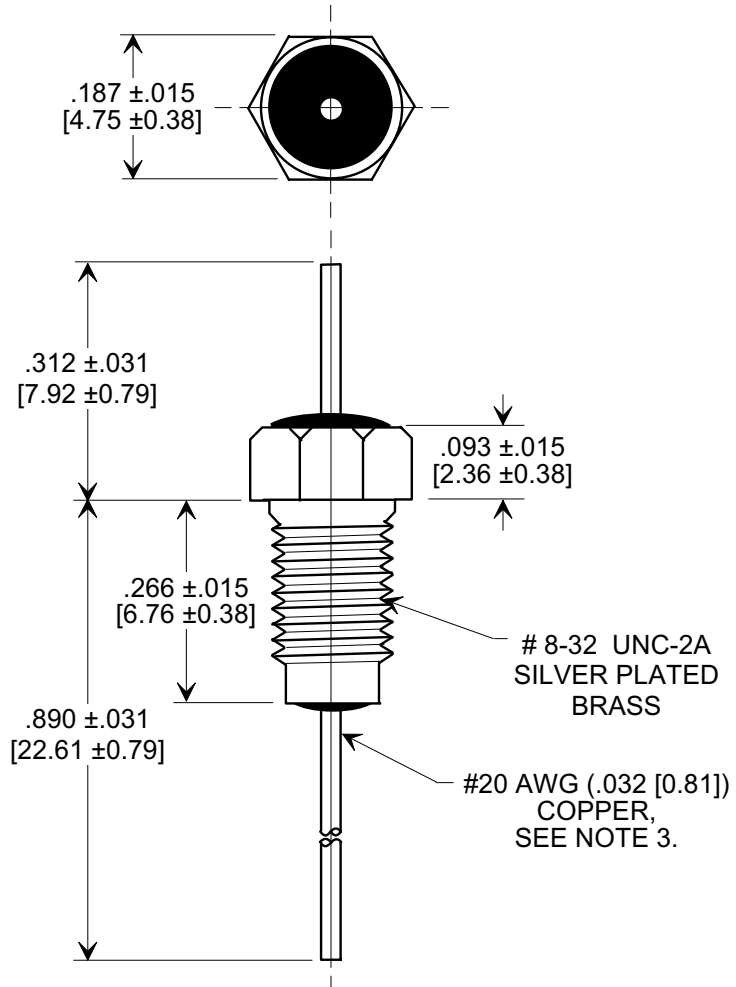
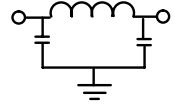
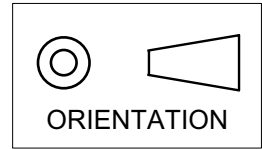


**MARKETING SALES DRAWING**

**DIMENSIONS IN INCHES - DO NOT SCALE THIS DRAWING**  
**DIMENSIONS IN METRIC - [ ]**

Electrical Testing  
 per Tusonix standard  
 test plans and Mil-Std-202  
 Test Methods.



**NOTES:**

- SUPPLIED WITH SILVER PLATED HEX NUT AND LOCKWASHER.
- TUSONIX STANDARD PART NUMBER: 4201-050  
 TUSONIX RoHS COMPLIANT PART NUMBER: 4201-050 LF.  
 CUSTOMER MUST SPECIFY STANDARD OR RoHS PART NUMBER WHEN ORDERING.
- LEAD FINISH: STANDARD PART #: 60/40 SOLDER PLATED. RoHS PART #: SILVER PLATED.
- PART MARKING: TRADEMARK AND VARIATION NUMBER ON HEX FLATS.  
 STANDARD PART: BLACK INK. RoHS PART: GREEN INK.

MIN. CAP. (pF)	WORKING VOLTAGE (WVdc)		CURRENT (Adc)	I.R. MIN. @ 100 (VDC.)	DWV (VDC)	MINIMUM NO LOAD INSERTION LOSS (dB) AT 25°C PER MIL-STD -220			
	85°C	125°C				10 MHz	100 MHz	1 GHz	10 GHz
5,500	200	100	10	10 G	400	14	55	70	70

X-2015 Rev-0 <b>REVISION RECORD</b> Original Release C.O. <b>970717-2</b> ADDED METRIC, DWV, IR & CIRCUIT. S.M. 01-12-04 <b>20040112-2-01</b> ADDED NOTES. S.M. 07-28-05 <b>20050726-2-27</b>	<b>0</b>	<b>1</b>	<b>2</b>	--TOLERANCES-- Unless Otherwise Specified	Title <b>BUSHING MOUNT PI TYPE EMI FILTER</b>		
	DECIMAL ± //			Drawn S.M. 07-17-97 Scale 4X			
	ANGLES ± //	Approved T.C. 07-17-97		<b>TUSONIX</b> TUCSON, ARIZONA		<b>A</b>	<b>4201-050</b>