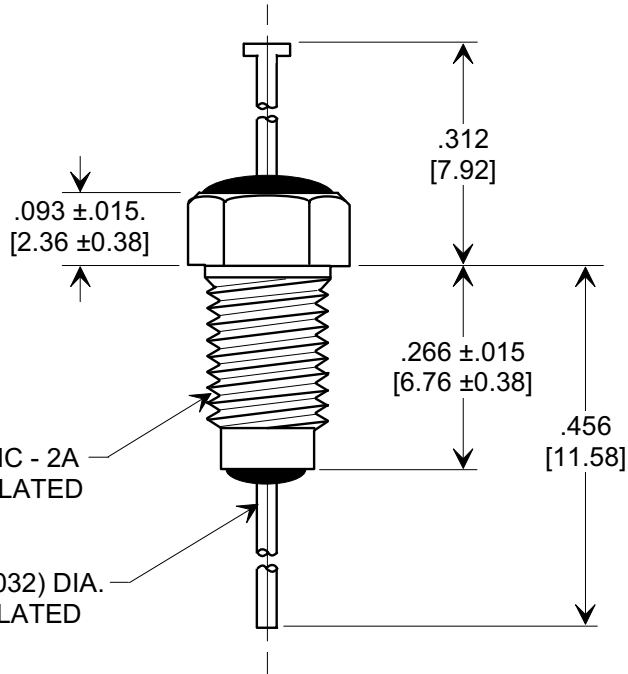
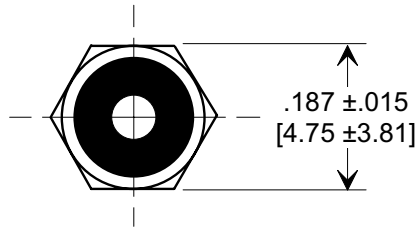
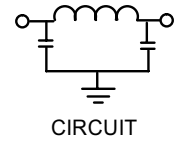
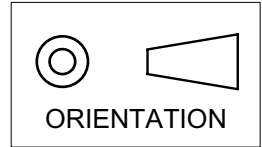
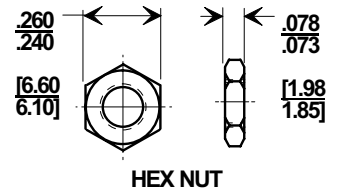
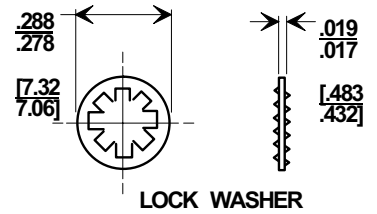


MARKETING SALES DRAWING
DIMENSIONS IN INCHES - DO NOT SCALE THIS DRAWING
DIMENSIONS IN METRIC - []

Electrical Testing
per Tusonix standard
test plans and Mil-Std-202
Test Methods.



MOUNTING HARDWARE



NOTE:

- SUPPLIED WITH SILVER PLATED HEX NUT AND INTERNAL TOOTH LOCK WASHER.
- MOUNTING TORQUE NOT TO EXCEED 3 lb-in.

MIN. CAP (pF)	WORKING VOLTAGE	CURRENT	DWV (VDC)	I.R. MIN. @ 100 (VDC.)	MINIMUM NO LOAD INSERTION LOSS (dB) @ 25°C PER MIL-STD-220		
	125°C				100 MHz	1 GHz	10 GHz
1000	100	10A	250	10 G Ω	65	70	70

X-2015 Rev-0	REVISION RECORD	
	Original Release C.O. 20021003-3-01	0
	100MHz WAS 45, 1GHz WAS 60 & 10GHz WAS 60. S.M. 01-13-04	1
	20040113-1-01	

--TOLERANCES-- Unless Otherwise Specified		Title MIL-15733/61-0008	
DECIMAL ± .031 [0.79]		BUSHING STYLE EMI FILTER	
ANGLES ±	Drawn L.E. 10-03-02	Scale 4 X	
TUSONIX TUCSON, ARIZONA	Approved T.C. 10-03-02		
	A	4201-502	