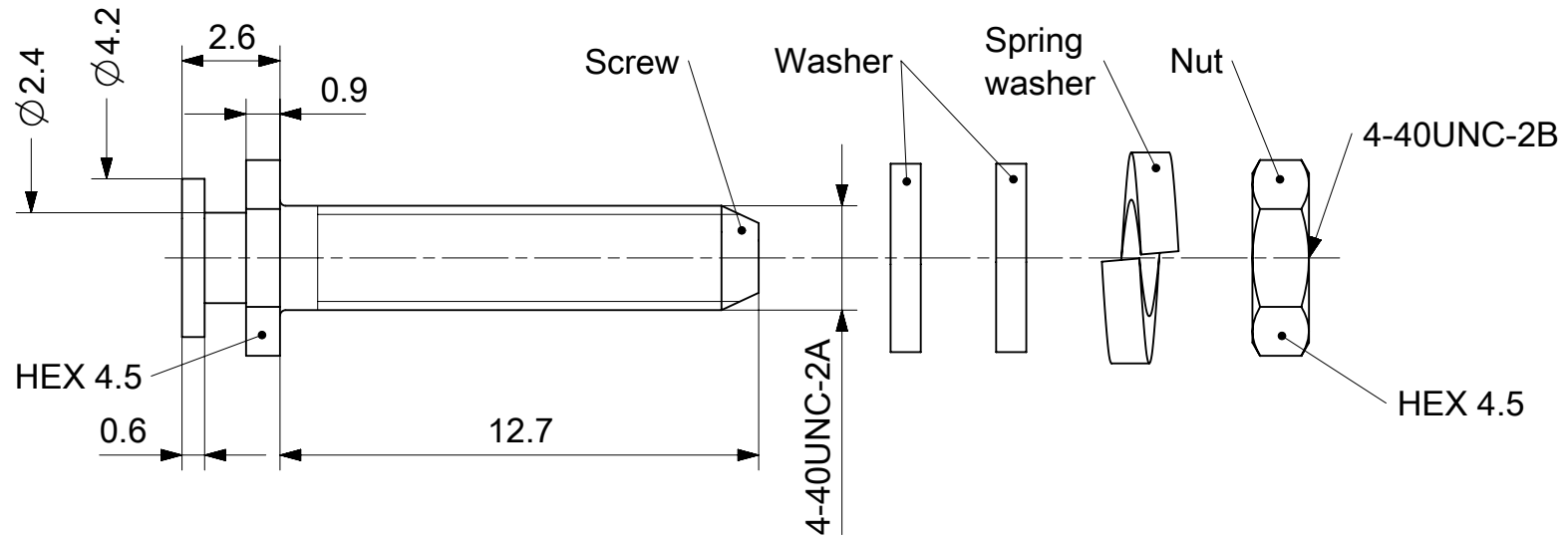


2:1



RoHS compliant
by exemption

1731121102	F-SGV1/5-K142SN	Steel	Tin plated	1	2	1	1
1731120606	F-SGV1/5-K142	Steel	Zinc plated	1	2	1	1
Material Number	FCT Part Number	Material	Surface	Screw (pc.)	Washer (pc.)	Spring washer (pc.)	Nut (pc.)

UNLESS OTHERWISE SPECIFIED DIMENSIONS FOR REFERENCE ONLY
REPLACEMENT FOR DOCUMENT NUMBER: F56M037_D

FUNCTIONAL SYMBOLS	THIS DRAWING CONTAINS INFORMATION THAT IS PROPRIETARY TO MOLEX ELECTRONIC TECHNOLOGIES, LLC AND SHOULD NOT BE USED WITHOUT WRITTEN PERMISSION							
	DIMENSION UNITS	SCALE	CURRENT REV DESC:					
$\frac{F}{A} = 0$	mm	5:1	EC NO: 731476 DRWN: MSTEINBRUECK 2022/02/17 CHK'D: MTEUBEL 2022/12/12 APPR: MTEUBEL 2022/12/12 INITIAL REVISION: DRWN: SKANDB 2021/09/17 APPR: MSTEINBRUECK 2021/12/20					
$\frac{F}{E} = 0$	GENERAL TOLERANCES (UNLESS SPECIFIED)							
$\frac{F}{P} = 0$	ANGULAR TOL	± °						
DIVISIONAL SYMBOLS	4 PLACES	±						
	3 PLACES	±						
	2 PLACES	±						
	1 PLACE	±						
	0 PLACES	±						
DRAFT WHERE APPLICABLE MUST REMAIN WITHIN DIMENSIONS			FIRST ANGLE PROJECTION	DRAWING	SERIES	MATERIAL NUMBER	CUSTOMER	SHEET NUMBER
				A4-SIZE	173112	SEE TABLE	GENERAL MARKET	1 OF 1



FCT F-SGV1/5-K142 4-40
SLIDE LOCK SCREW

PRODUCT CUSTOMER DRAWING

DOCUMENT NUMBER	DOC TYPE	DOC PART	REVISION
1731120606	PSD	000	A1

Generally twice a material number respectively FCT part number is needed per connector.

Packaging specification: 1731120003-PK

DOCUMENT STATUS	P1	RELEASE DATE	2022/12/12	08:36:45
-----------------	----	--------------	------------	----------