

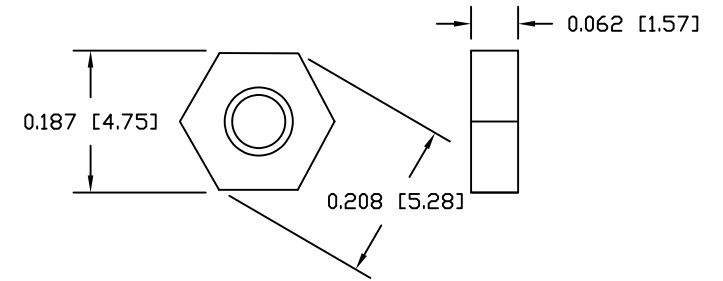
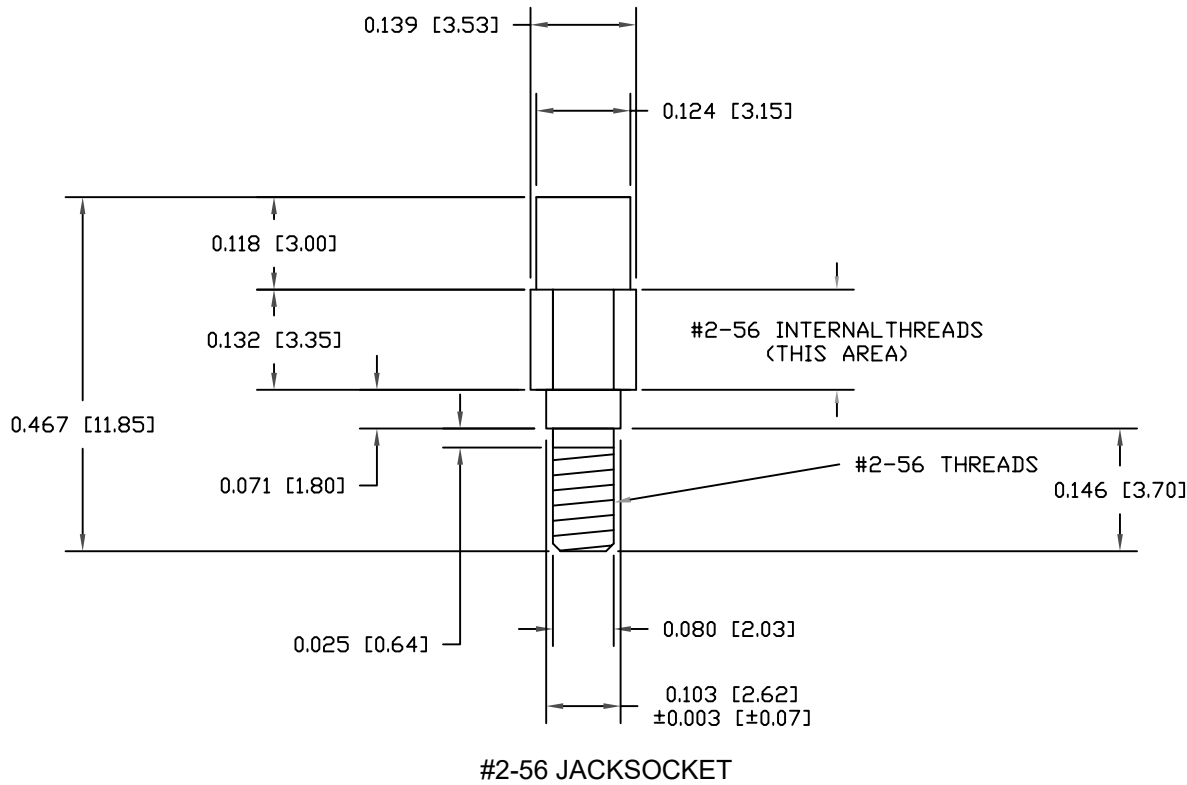
MATERIAL:

JACKSOCKETS: NICKEL PLATED BRASS (3604)
 SPLIT LOCK WASHER: ZINC PLATED STEEL
 #2-56 NUT: ZINC PLATED STEEL

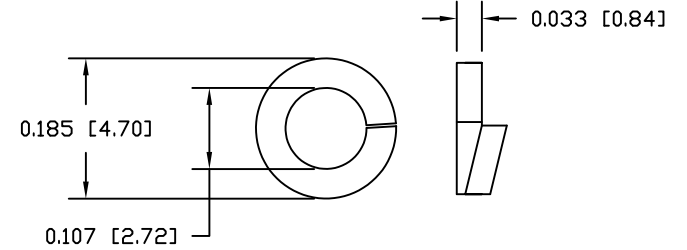
RECOMMENDED MAX. TORQUE = 30 in-oz

KIT INCLUDES:

- (2) #2-56 JACKSOCKETS
- (2) SPLIT LOCK WASHERS
- (2) #2-56 NUTS



#2-56 NUT



SPLIT LOCK WASHER

DO NOT SCALE FROM DRAWING



THESE DRAWINGS AND SPECIFICATIONS ARE THE PROPERTY OF NorComp AND SHALL NOT BE REPRODUCED, COPIED OR USED AS THE BASIS FOR THE MANUFACTURE OF SALE OF APPARATUS WITHOUT WRITTEN PERMISSION.

DRAWN: M. SIGMON

DATE: 08-09-12

NorComp

SCALE: NTS SHEET 1 OF 1 REV 5

DWG NO. 160-380-001R031

RoHS COMPLIANT