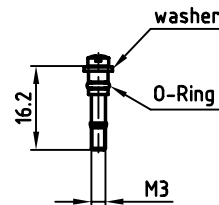
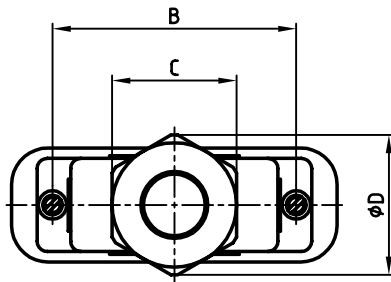
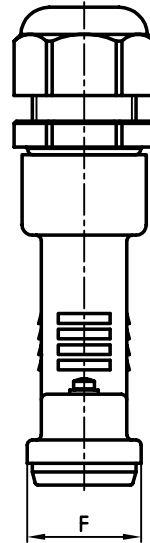
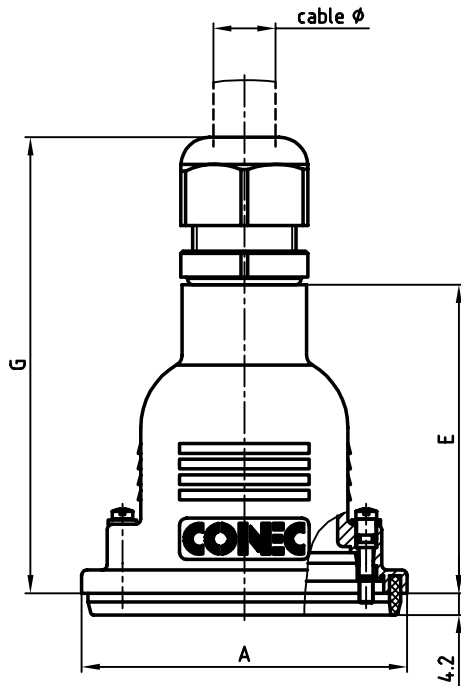


used for: D-SUB



jackscrew incl. washers and O-ring

Shellsize	A	B	C	ϕD	E	F	$G_{-0.3}^{+1}$	cable ϕ	Part NO.
1	40.76	25.0	SW 22	24.6	51.0	22.0	77.0	5 - 10	165X15169X
2	49.06	33.3	SW 24	26.5	51.0	22.0	79.0	6 - 12	165X15179X
3	62.80	47.04	SW 24	26.5	59.5	22.0	87.5	6 - 12	165X15189X
4	78.86	63.5	SW 33	36.2	67.0	22.0	99.0	9 - 16	165X15199X
5	76.46	61.1	SW 42	47.0	67.0	24.8	107.0	13 - 20	165X15209X

NOTES:

- 1. HOOD: PBT GF , BLACK
- 2. SCREWS: STAINLESS STEEL

THIS DRAWING MAY NOT BE COPIED OR REPRODUCED IN ANY WAY, AND MAY NOT BE PASSED ON TO A THIRD PARTY, WITHOUT WRITTEN PERMISSION. OWNERSHIP AND COPYRIGHT OF CONEC GmbH DO NOT ALTER CAD DRAWING BY HAND

tolerance				scale: 1:1	
				material: SEE NOTES	
2002	date	name		title:	
drawn	21.05.	Parei		WATER RESISTANT D-SUB HOOD	
appd.	21.05.	E. Mickenbecker		9-50pos.	
norm				with short screw / M3 thread	
d-old				dwg no: AutoCAD 2000 DIN-A	
				16K1A582	
				3	
				sh: 1/1	
rev.	description	date	name	part no: SEE TABLE	



scale: 1:1	
material: SEE NOTES	
title: WATER RESISTANT D-SUB HOOD	
9-50pos.	
with short screw / M3 thread	
dwg no: AutoCAD 2000	DIN-A
16K1A582	3
	sh: 1/1
part no: SEE TABLE	