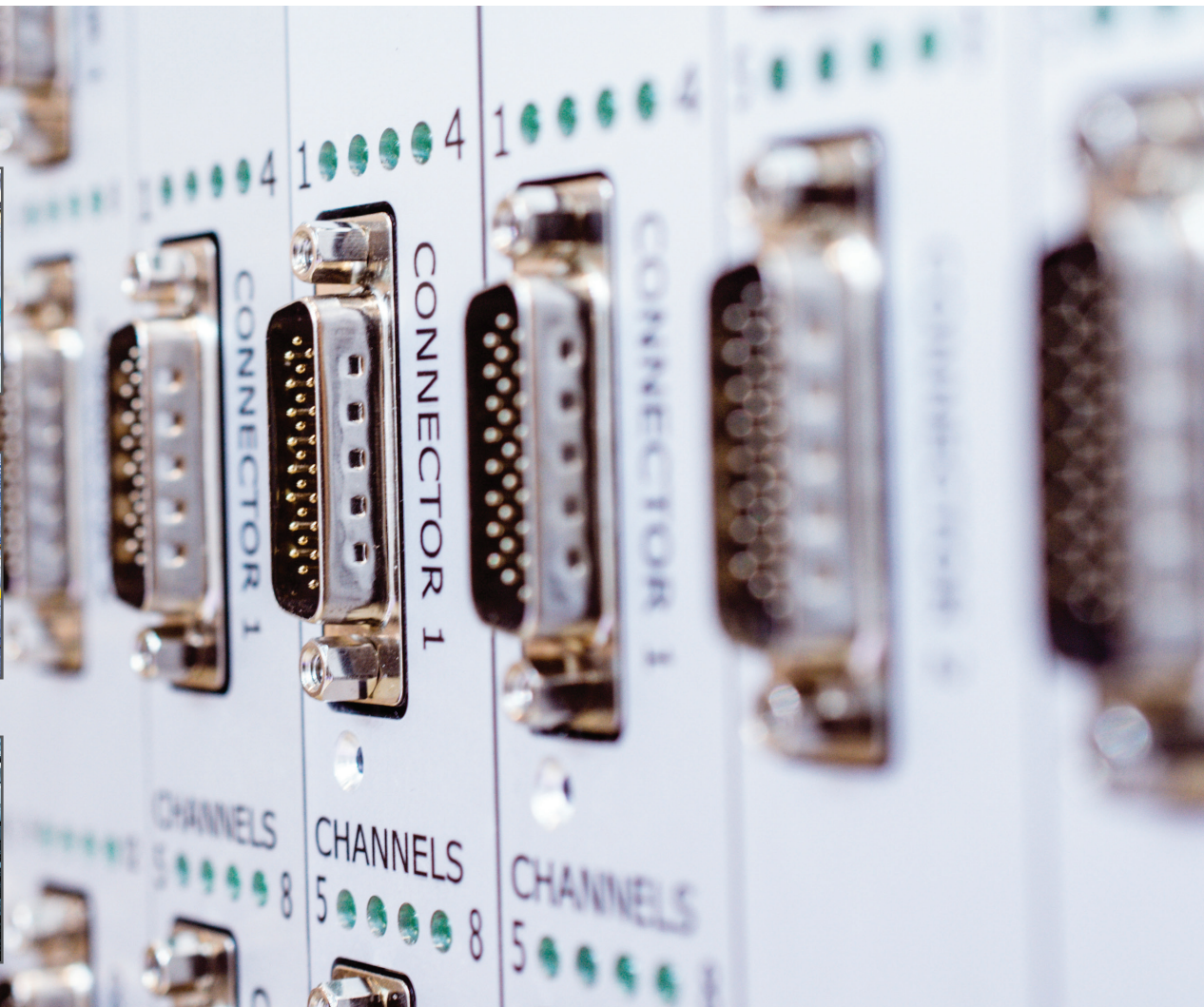


# FCT D-SUB PRODUCTS

*Standard, High-Density and Mixed Layout D-Subs  
D-Sub Hoods and Cable Assemblies*



**molex**

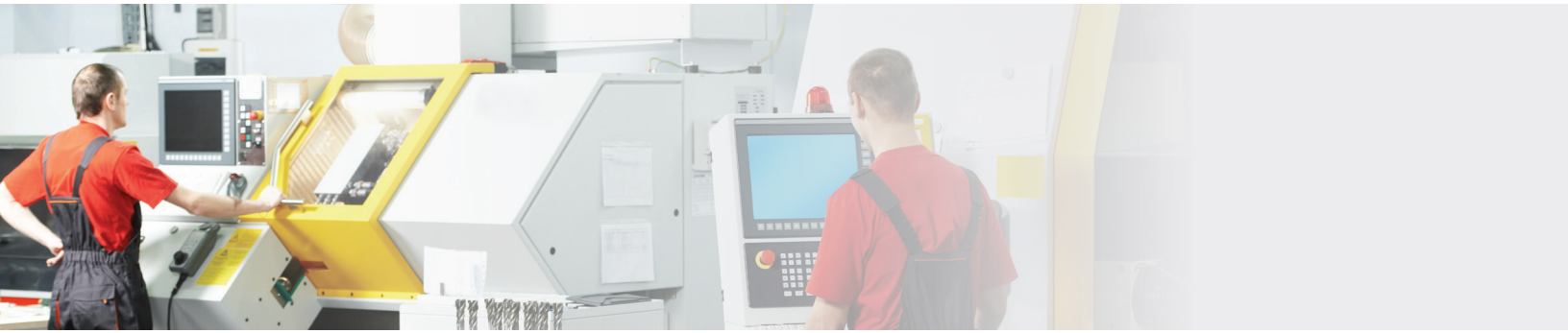


**FCT D-Sub Connectors are a popular solution found in a broad range of applications and various industries. It is a time tested connector commonly used for signal transmission, communications, power distribution, control panels, and test equipment.**

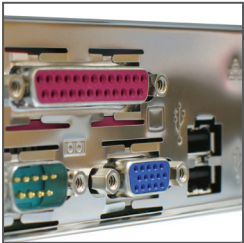
FCT D-Sub products machined contacts providing higher current, lower resistance, and greater durability compared to stamped contacts. They provide a secure and reliable, semi-permanent electrical path between two devices. Each series offers five different shell sizes. Additionally, available mating combinations include wire-to-wire, wire-to-board and board-to-board interconnects.

FCT D-Sub products are readily available in a wide variety of materials and plating combinations. Specialty D-Sub connectors include waterproof IP67, filtered, non-magnetic, and non-outgassing. If a new configuration is required Molex can conveniently provide a tailored solution.

To accompany the connectors there is also a full range of hoods. The hoods provide strain-relief, connector protection, and cable dressing- completing the cable assembly. Full turnkey cable assemblies are also available.



## Applications



Power and Signal



Communications

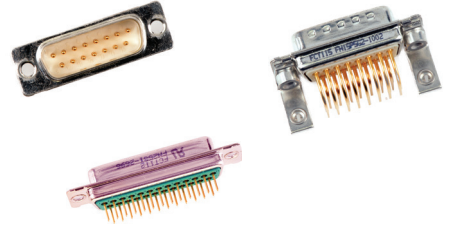


Aircraft Cabins

### Standard D-Sub

Circuit sizes: 9, 15, 25, 37, 50

Machined pin and socket contacts available as solder pot, crimp, straight or right-angled PCB termination



### High-Density D-Sub

Circuit sizes: 15, 26, 44, 62, 78

Machined pin and socket contacts available as solder pot, crimp, straight or right-angled PCB termination

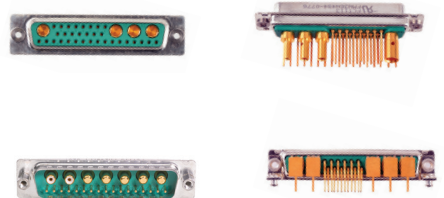


### Mixed Layout D-Sub

Combining signal and special contacts in a single connector

Special contacts: power, coaxial, high-voltage, pneumatic

Many configuration layouts available



### Hoods, Metal and Plastic

Wide range of hoods in five shell sizes

Various designs and materials

Simple assembly, no special tools



## High Power Contacts

Size 8

Current Ratings: 10A, 20A, 30A and 40A

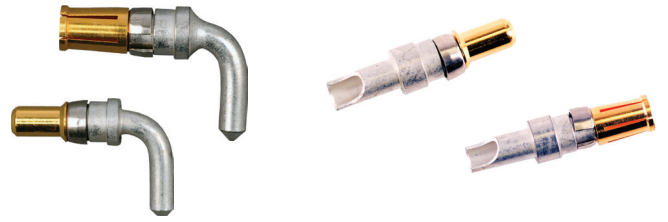
Gold plating options available

Non-magnetic versions available

Cable assembly options: Crimp and solder versions

Board-level options: Straight or right-angle

Press-fit available



## Coaxial Contacts

Size 8

Impedance: 50 Ohm and 75 Ohm available

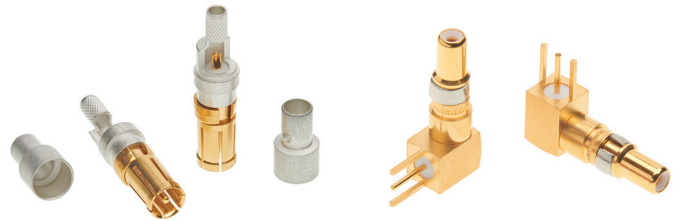
Gold plating options available

Non-magnetic versions available

Cable assembly options: Crimp and solder versions

Board-level options: Straight or right-angle

3 and 5-pin footprint options



## High-Voltage Contacts

Size 8

Voltage: 3000V maximum

Gold plating options available

Cable assembly options: Crimp and solder versions

Board-level options: Straight



## Pneumatic Contacts

Size 8

Suitable for compressed air line tubes

Pressure: 101.5 PSI maximum

Cable assembly options: Straight or right-angle



## Standard Contacts

Size 20

Current Rating: 7.5A

Gold plating options available

Non-magnetic versions available

Cable assembly options: Crimp and solder versions

Board-level options: Straight or right-angle



## High-Density Contacts

Size 22

Current Rating: 5A

Gold plating options available

Non-magnetic versions available

Cable assembly options: Crimp and solder versions available

Board-level options: Straight or right-angle





## Waterproof D-Subs and Hoods

Standard, high-density and mixed layout D-Subs

Waterproof hoods and protective caps

IP67 rated



## Non-Magnetic D-Subs and Hoods

Connectors, contacts, hoods

Permeability  $\mu r \leq 1.0025$

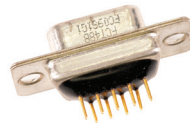
100% permeability tested



## Filtered D-Subs

Standard, high-density and mixed layout D-Subs

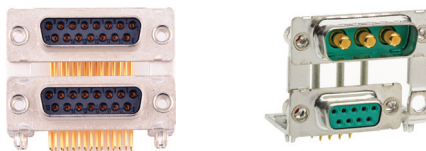
High-pass and low-pass filters



## Dual Port D-Subs

Space saving, compact connector

Standard, high-density and mixed layout D-Subs



## Cable Assemblies

Data and signal cable assemblies

Power cable assemblies

Specialized hybrid cable assemblies

Fully shielded cable assemblies

Overmolded cable assemblies

IP67 rated cable assemblies



## Applications



Test and Measurement



Medical Equipment



Security

Get customized insights at: [molex.com](https://molex.com)