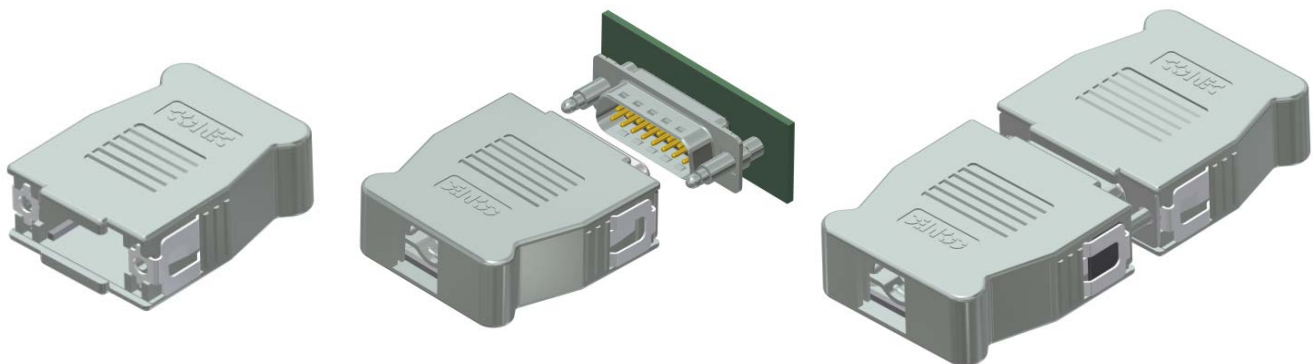


CONEC SnapLock



1 Introduction

The new CONEC SnapLock locking system consists of D-SUB connectors and D-SUB hoods allowing quick and safe locking without any additional screwing. A spring-loaded clip integrated in the hood locks in place with the locking bolt mounted to the mating connector and ensures a quick and safe connection. The locking bolt for the connector is available in two variants:

1. Firmly integrated in the connector, for example with a standard thread insert. The advantage is that the locking bolts cannot get lost and do not have to be installed in a second work step.
2. As kit for subsequent mounting on connectors for rear panel mounting or as upgrade kit for existing systems, to be used with the CONEC SnapLock hood.

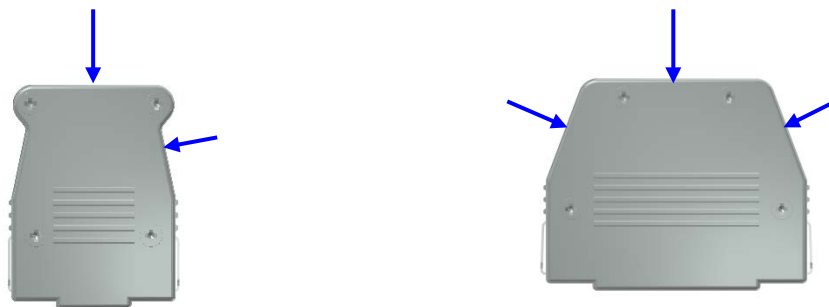
Locking of the locking mechanism is indicated by an audible and tangible click. Due to the high retaining force, safe locking of the connector is provided for many different applications.

The CONEC SnapLock system is especially designed for applications with high requirements to vibration and shock resistance such as applications in the railway and transport industries. The respective tests are currently carried out.

2 Items and models

The plastic hoods are available in sizes 1 – 5, metallised or black. The material is flame-resistant in accordance with UL 94 V0.

Depending on their sizes, the hoods come with 2 or 3 cable entries.



Model ABS black

| Part no. | Name | size | Number of cable entries |
|-----------|------------------------------|------|-------------------------|
| 16-001810 | Shell 09-pos., plastic black | 1 | 2 |
| 16-001820 | Shell 15-pos., plastic black | 2 | 2 |
| 16-001830 | Shell 25-pos., plastic black | 3 | 3 |
| 16-001840 | Shell 37-pos., plastic black | 4 | 3 |
| 16-001850 | Shell 50-pos., plastic black | 5 | 3 |

Model ABS metallised

| Part no. | Name | size | Number of cable entries |
|-----------|-----------------------------------|------|-------------------------|
| 16-001750 | Shell 09-pos., plastic metallised | 1 | 2 |
| 16-001760 | Shell 15-pos., plastic metallised | 2 | 2 |
| 16-001770 | Shell 25-pos., plastic metallised | 3 | 3 |
| 16-001780 | Shell 37pole, plastic metallised | 4 | 3 |
| 16-001790 | Shell 50-pos., plastic metallised | 5 | 3 |

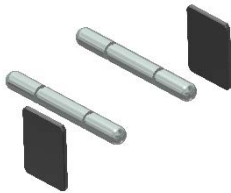
In addition to the hoods we offer appropriate D-SUB connectors (9 – 50 pos.) with integrated locking bolt. The locking bolt is tightly mounted to the connector shell and thus cannot get lost.

| Part no. | Name | Quality class |
|-----------|--|---------------|
| 16-002091 | D-SUB 09-pos., male connector, solder pin straight | C |
| 16-002093 | D-SUB 09-pos., male connector, solder pin straight | A |
| 16-002101 | D-SUB 15-pos., male connector, solder pin straight | C |
| 16-002103 | D-SUB 15-pos., male connector, solder pin straight | A |
| 16-002111 | D-SUB 25-pos., male connector, solder pin straight | C |
| 16-002113 | D-SUB 25-pos., male connector, solder pin straight | A |
| 16-002121 | D-SUB 37-pos., male connector, solder pin straight | C |
| 16-002123 | D-SUB 37-pos., male connector, solder pin straight | A |
| 16-002131 | D-SUB 50-pos., male connector, solder pin straight | C |
| 16-002133 | D-SUB 50-pos., male connector, solder pin straight | A |
| 16-002141 | D-SUB 09-pos., female connector, solder pin straight | C |
| 16-002143 | D-SUB 09-pos., female connector, solder pin straight | A |
| 16-002151 | D-SUB 15-pos., female connector, solder pin straight | C |
| 16-002153 | D-SUB 15-pos., female connector, solder pin straight | A |
| 16-002161 | D-SUB 25-pos., female connector, solder pin straight | C |
| 16-002163 | D-SUB 25-pos., female connector, solder pin straight | A |
| 16-002171 | D-SUB 37-pos., female connector, solder pin straight | C |
| 16-002173 | D-SUB 37-pos., female connector, solder pin straight | A |
| 16-002181 | D-SUB 50-pos., female connector, solder pin straight | C |
| 16-002183 | D-SUB 50-pos., female connector, solder pin straight | A |

Accessories:

Further on there is an option to make a hood-to-hood connection . This is done via a connection bolt kit (*see depiction 1*). With a small plastic plate, the connection can be secured from one side against detaching (with one locking plate per side).

Another supplement is the upgrade kit (*see depiction 2*).for existing D-SUB systems with threaded insert UNC 4-40. The kit includes two locking bolts with washers. These are screwed in the threaded insert and ensure safe use of the CONEC SnapLock hood.



Depiction 1: Locking kit hood-to-hood



Depiction 2: Kit screw bolt

| Part no. | Name | hood size |
|------------------|--|-----------|
| 16-002200 | Locking kit hood-to-hood | 1 - 5 |
| 16-002190 | Upgrade kit screw-in bolt rear panel mounting (4-40 UNC) | 1 - 5 |

3 Technical specifications CONEC SnapLock

| | Quality class A | Quality class C |
|--|---------------------|-----------------|
| Working voltage | 125 V | |
| Current rating - signal | 7.5 A | |
| Degree of protection | IP20 | |
| Type of connection – signal | Solder pin straight | |
| Mating cycles | > 50 | > 500 |
| Ambient temperature - connector | -55°C ... +125°C | |
| Ambient temperature - hoods | -30 °C ... +85 °C | |
| Hardware options mating side | CONEC SnapLock | |
| PCB mounting | PCB clip | |

4 Materials

CONEC SnapLock D-SUB connectors

| | Plastic metallised | Plastic black |
|-------------------------------|--------------------|---------------|
| Insulator | PBT GF UL 94 V-0 | |
| Colour | Nickel | |
| Shell | Steel | |
| Shell surface | Tin | |
| Signal contact | Copper alloy | |
| Signal contact surface | Gold over nickel | |

CONEC SnapLock D-SUB hood

| | Plastic metallised | Plastic black |
|-------------------------------|----------------------|---------------|
| Shell, bottom/top part | ABS UL 94 V-0 | |
| Surface | Nickel | - |
| Strain relief | Steel nickel-plated | |
| SnapLock clip | Stainless steel | |
| Fastening screws | Steel, nickel-plated | |

5 Availability

The products are available as of now.

For the CONEC SnapLock system, a product qualification is carried out at the moment, especially relating to vibration and shock resistance for railway and transport applications.

The tests will be completed by the end of the first quarter of 2015.

6 Benefits

- Quick and easy locking and unlocking
- Secure locking / high retaining force
- Can be mounted faster than a standard screw lock
- Models available in KU black and KU metallised
- Front & side cable entries
- Hood-to-hood connection via locking kit
- Connector with integrated bolt
- Integrated bolt cannot get lost
- Existing systems may be retrofit using a screwable bolt kit

Joerg Kuehle

Manager R&D IO / Embedded