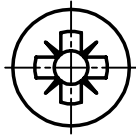
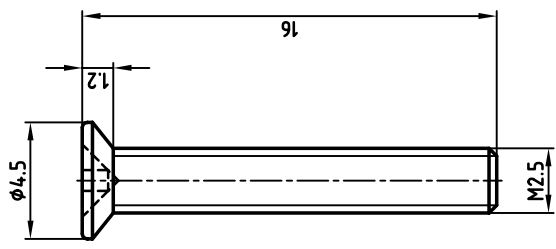
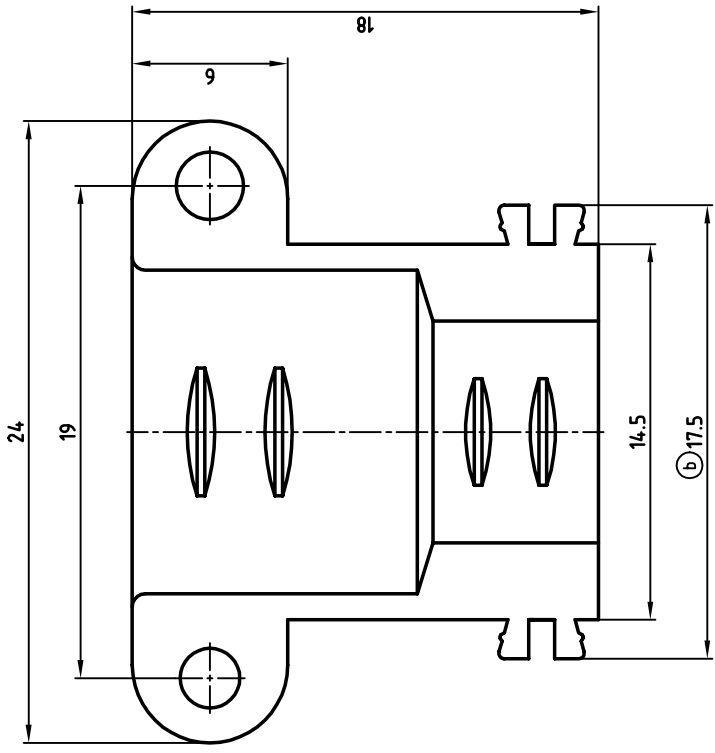


used for: D-SUB HOOD



- 1 SET CONSISTS OF:
- 2 CABLE CLAMPS
- 2 SCREWS

THIS DRAWING MAY NOT BE COPIED OR REPRODUCED IN ANY WAY, AND MAY NOT BE PASSED ON TO A THIRD PARTY WITHOUT WRITTEN PERMISSION.  
OWNERSHIP AND COPYRIGHT OF CONEC GMBH DO NOT ALTER CAD DRAWING BY HAND

rev.	description	date	name
1 x b	Ä 1745	04.03.2003	Parrel

2002	date	name
drawn	19.04.	Parrel
appd.	19.04.	E. Mickenbecker
norm		
e-old		

tolerance

scale: 5:1  
material: CABLE CLAMP: DIE-CAST ZINC

title: CABLE CLAMP SET FOR HOOD 50pos.  
dwg no: 16K1A551  
part no: 160X11199X

AutoCAD 2000 DIN-A 3 sh:1/1

