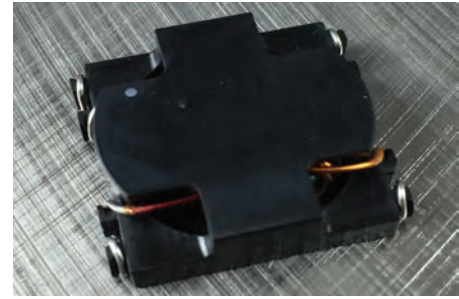




COMMON MODE CHOKES

ACM0412CI

- Common mode choke for power application
- High Impedance to minimize common mode noise
- Excellent EMI performance
- Industrial temperature range: -40°C to +120°C



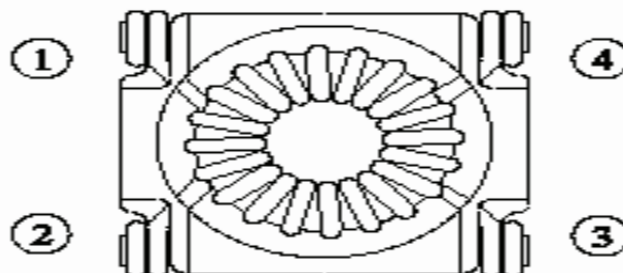
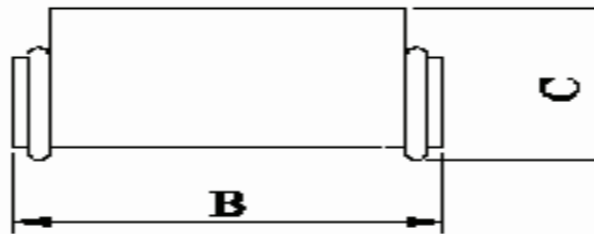
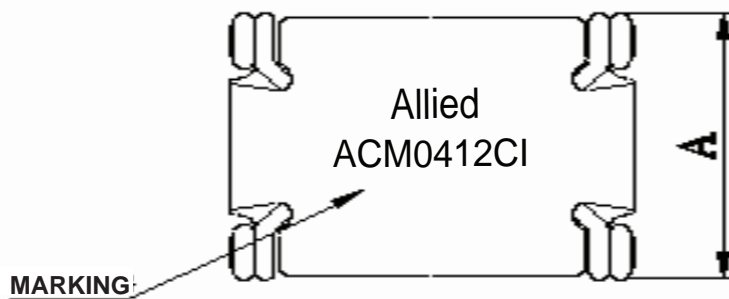
Electrical Specifications @25°C						
Part Number	Inductance @10KHz/0.05V		I Rated	DCR		HI-POT
	L (1-4)	L (2-3)	N1=N2	(1-4)	(2-3)	N1(1-4) to N2(2-3)
ACM0412CI	1.17mH±35%	1.17mH±35%	7.2A	200 mohm	200 mohm	1.0KV 3mA 3Sec

All specifications subject to change without notice.

MECHANICAL

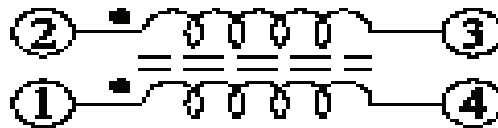
(UNIT: mm)

- A: 12.70 MAX. mm
- B: 12.70 MAX. mm
- C: 5.46 MAX. mm





SCHMATIC



PCB LAYOUT

