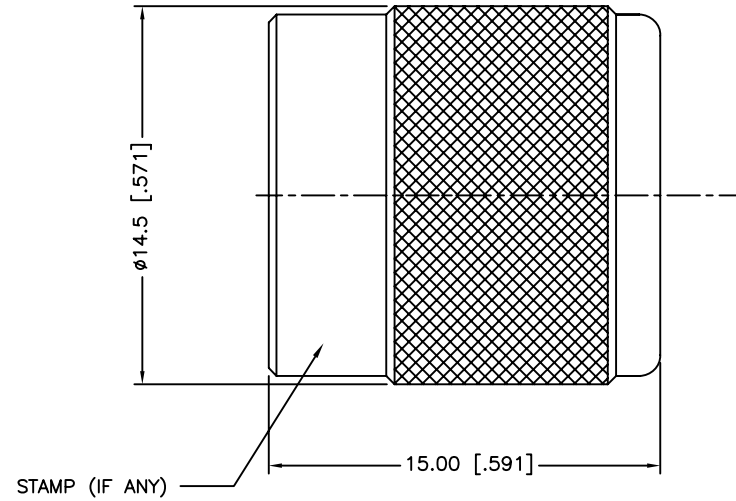


| REV. | DATE | ECR NO. | DESCRIPTION |
|------|----------|---------|-----------------|
| NC | 04/06/10 | XXXXXX | INITIAL RELEASE |



UNLESS OTHERWISE SPECIFIED DIMENSIONS ARE IN MILLIMETERS. DIMENSIONS IN [] ARE IN INCHES AND FOR CUSTOMER REFERENCE ONLY.

UNLESS OTHERWISE SPECIFIED TOLERANCES FOR MILLIMETERS ARE:
0.5 - 8mm ± 0.20mm
8 - 30mm ± 0.40mm
30 - 120mm ± 0.50mm

UNLESS OTHERWISE SPECIFIED TOLERANCES FOR INCHES ARE:
.020 - .315 = ± 0.007"
.315 - 1.180 = ± 0.015"
1.180 - 4.724 = ± 0.020"

DO NOT SCALE DRAWING

| | | |
|-----------|-------------------------|----------|
| APPROVALS | | DATE |
| DRAWN | F.WANG | 04/06/10 |
| CHECKED | | |
| ISSUED | | |
| SHEET | 1 OF 1 | |
| CAD FILE | F:/CONNEX/202101-12.DWG | |

| | | | |
|---|---------------|---------|-----------------|
| Amphenol Connex | | | |
| PART DESCRIPTION TNC MALE CAP IP67 RATED | | | |
| PART NO. 202101-12 | | | |
| DWG. NO. | 202101-12.DWG | REV. NC | SIZE A SCALE NA |

| 2 | GASKET | SILICONE | RED | 1 |
|-------------|----------|----------|--------|---|
| 1 | SHELL | BRASS | NICKEL | 1 |
| DESCRIPTION | MATERIAL | FINISH | QTY | |