



**ANATECH ELECTRONICS INC**  
RF & Microwave Filters & Products

# 1842 MHz Ceramic Bandpass Filter

**Part Number: AM1842B151**



## Electrical specifications

**Center Frequency:** 1842.5 MHz  
**Bandwidth:** +/- 37.5 MHz  
**Input / Output Impedance:** 50 Ohms  
**Passband:** 1805-1880 MHz  
**Passband Insertion Loss:** 1.9 dB (2.5 dB max)  
**Passband Return Loss:** 13 dB (10 dB min)  
**Passband Ripple:** 1.0 dB max  
**Rejection:** 1375-1450 MHz 38dB  
**Rejection 2:** 1590-1665 MHz 38 dB  
**Rejection 3:** 1710-1785 MHz 7.6 dB  
**Rejection 4:** 1980-2055 MHz 19 dB  
**Power Handling:** 1 W

## Mechanical

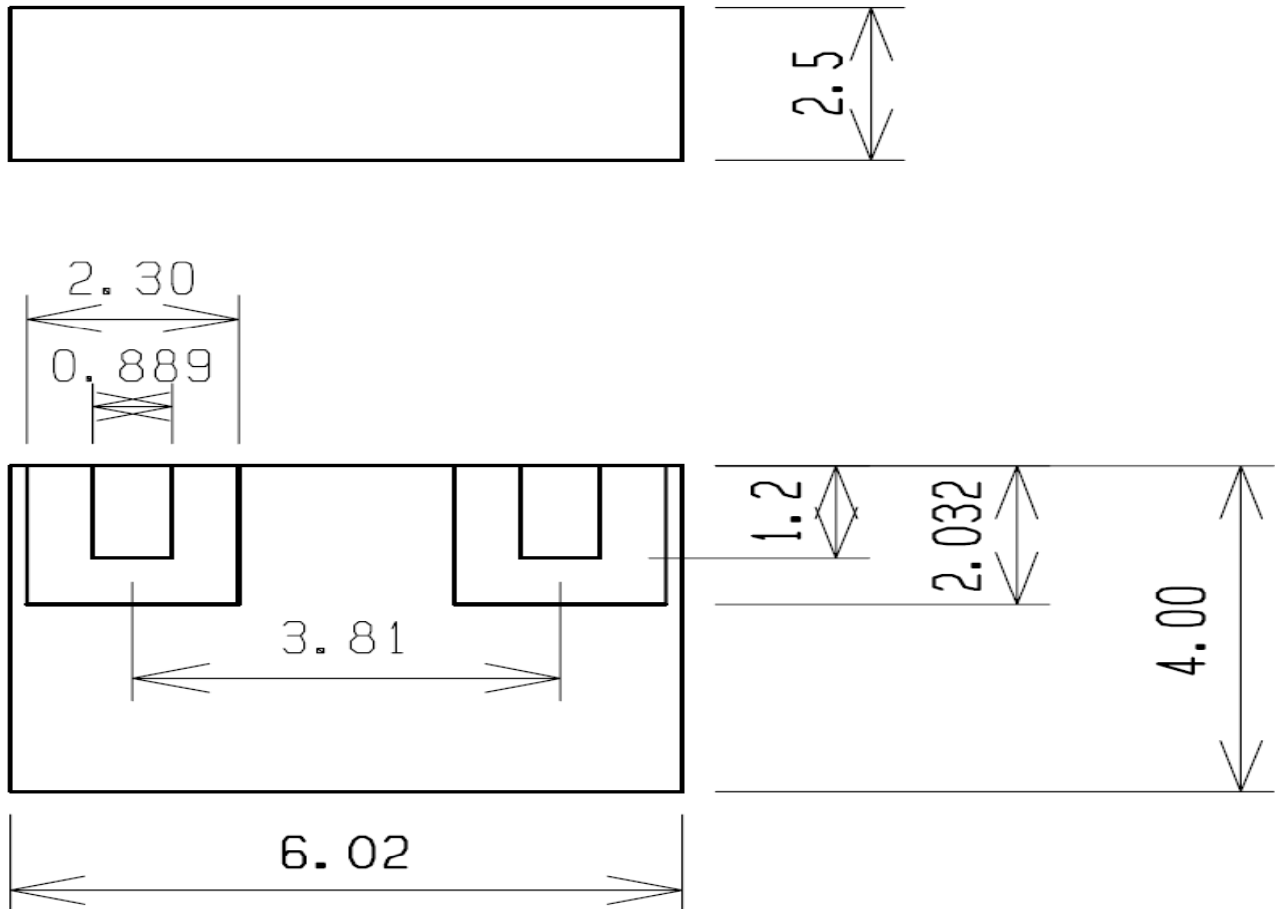
**Mounting Method:** SMT  
**Dimensions:** 6.02 x 4 x 2.5 mm

## Environmental

**Operating Temperature:** -30°C to +70°C  
**Storage Temperature:** -50°C to +90°C

This product is RoHs compliant.

## Outline Drawing:





**ANATECH ELECTRONICS INC**  
RF & Microwave Filters & Products

# 1842 MHz Ceramic Bandpass Filter

**Part Number: AM1842B151**



## Response Plot:

```

CH2 S11          LOG MAG
REF  0.000 dB    10.000 dB/
CH4 S31          LOG MAG
REF  0.000 dB    10.000 dB/

```

