



**ANATECH ELECTRONICS INC**  
RF & Microwave Filters & Products

# 1669 MHz Ceramic Bandpass Filter

**Part Number: AM1669B997**



## Electrical specifications

**Center Frequency:** 1669 MHz  
**Bandwidth:** +/- 30 MHz  
**VSWR:** 2.0 max  
**Input / Output Impedance:** 50 Ohms  
**Passband:** 1654-1684 MHz  
**Passband Insertion Loss:** 1.6 dB max  
**Passband Ripple:** 0.5 dB max  
**Rejection:** 28 dB min at 1469 MHz  
**Rejection 2:** 16 dB min at 1869 MHz  
**Power Handling:** 1 W

## Mechanical

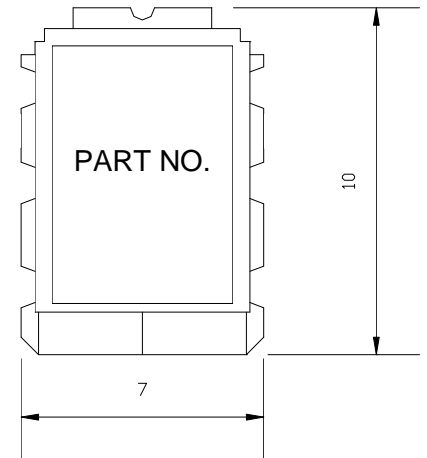
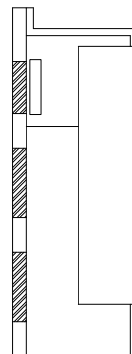
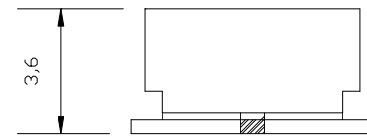
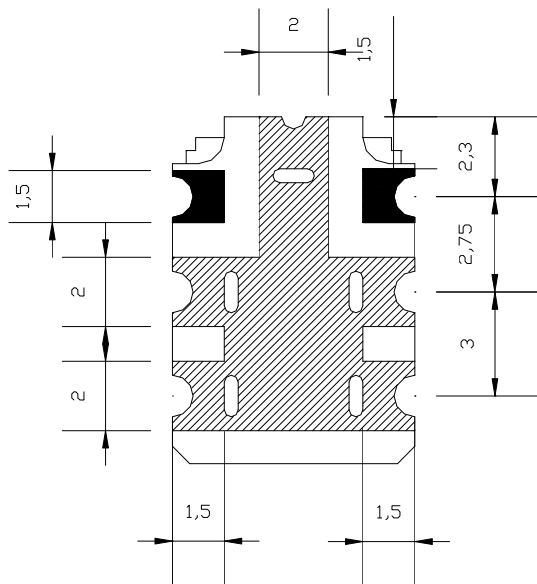
**Mounting Method:** SMT  
**Dimensions:** 10 x 7 x 3.6 mm

## Environmental

**Operating Temperature:** -30°C to +70°C  
**Storage Temperature:** -50°C to +90°C

**This product is RoHs compliant.**

## Outline Drawing:



 I/O PORT  
 GROUND

TOLERANCES : +/- 0.3  
 UNIT : mm



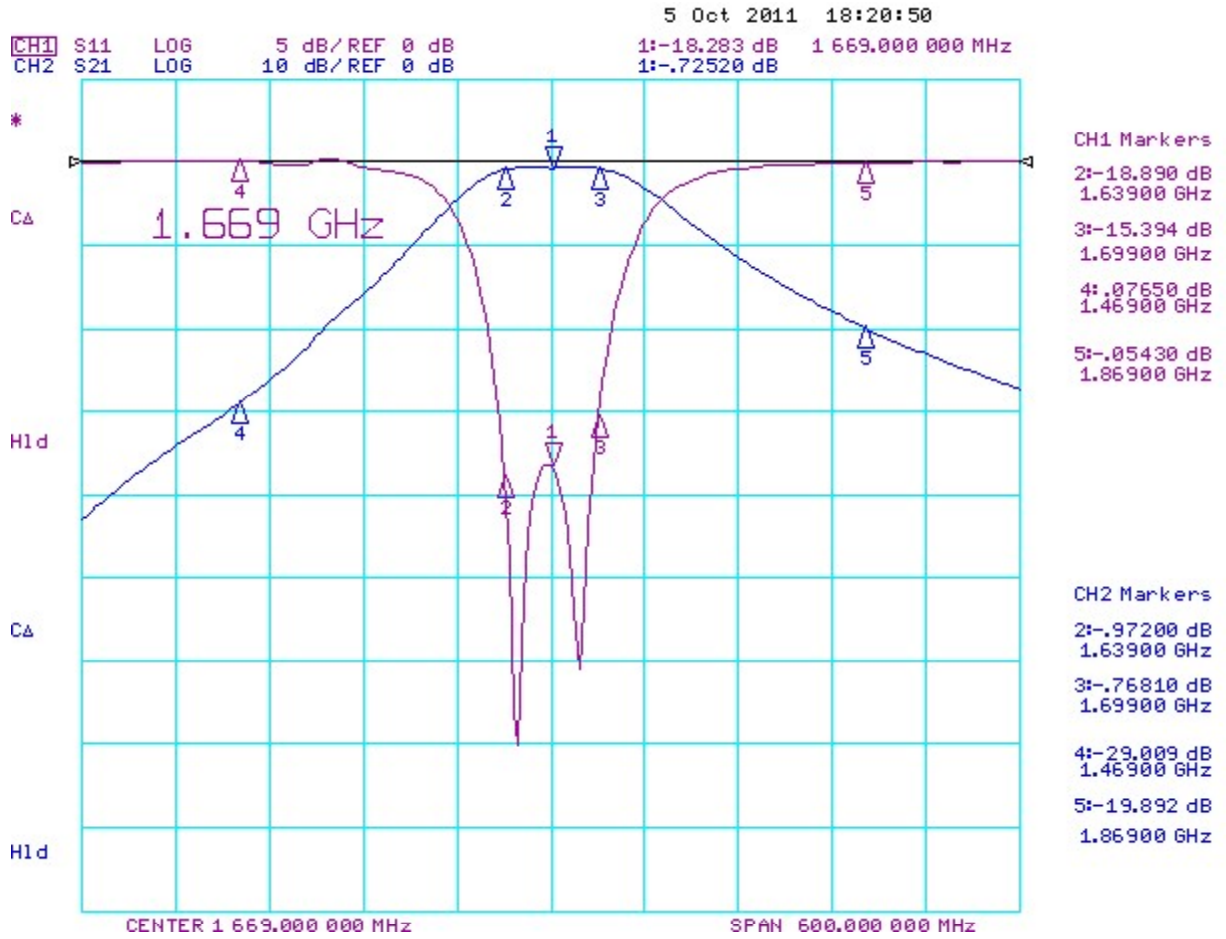
**ANATECH ELECTRONICS INC**  
RF & Microwave Filters & Products

# 1669 MHz Ceramic Bandpass Filter

Part Number: AM1669B997

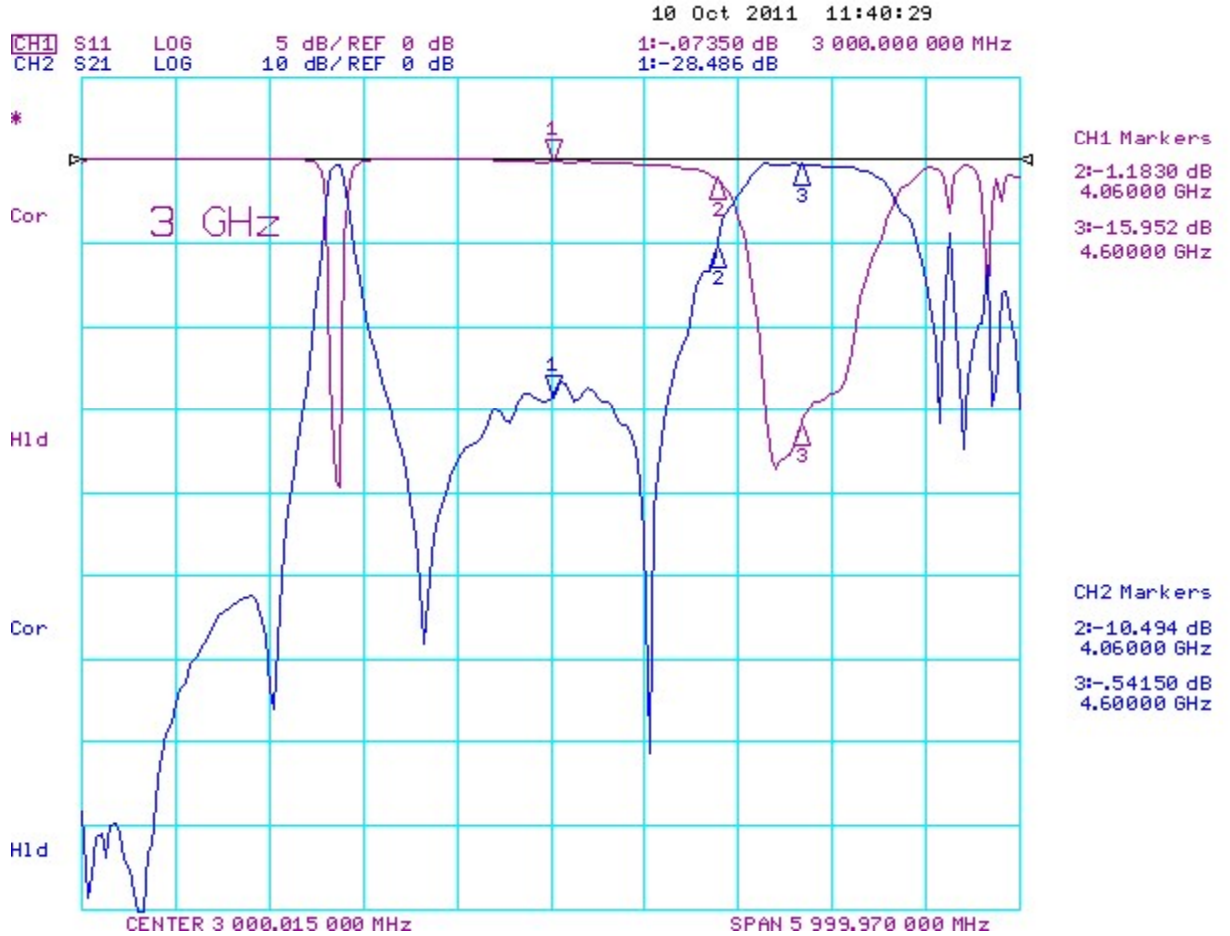


## Response Plots:





### Response Plots:





**ANATECH ELECTRONICS INC**  
RF & Microwave Filters & Products

# 1669 MHz Ceramic Bandpass Filter

Part Number: AM1669B997



## Smith Chart:

