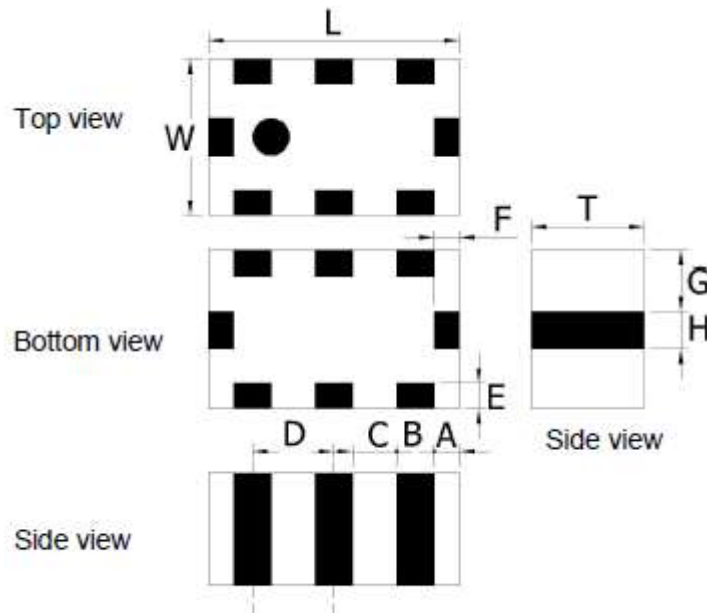


Parameters		Specification	Unit
Frequency Range		858.000 ~ 878.000	MHz
Insertion Loss at 25°C, max		0.5	dB
Return Loss, min		14	dB
Attenuation, min	@ 1716 ~ 1756 MHz	30	dB
	@ 2574 ~ 2634 MHz	40	dB
Impedance		50	Ω
Operating Temperature Range		-40°C to +85°C	°C
Storage Temperature Range		-40°C to +85°C	°C
MSL		1	-

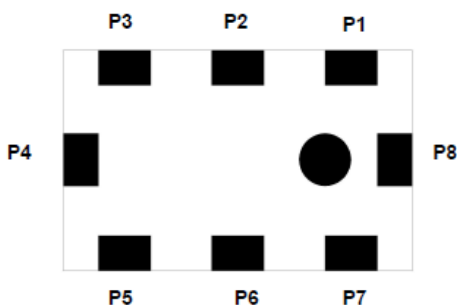
Dimensions



	L	W	T	A	B	C	D	E	F	G	H
Dimension	2.0±0.15	1.25 ± 0.15	0.95± 0.10	0.20 ± 0.15	0.30 ± 0.15	0.35 ± 0.15	0.65 ± 0.15	0.20 ± 0.15	0.20 ± 0.15	0.475± 0.15	0.30 ± 0.15

Unit: mm

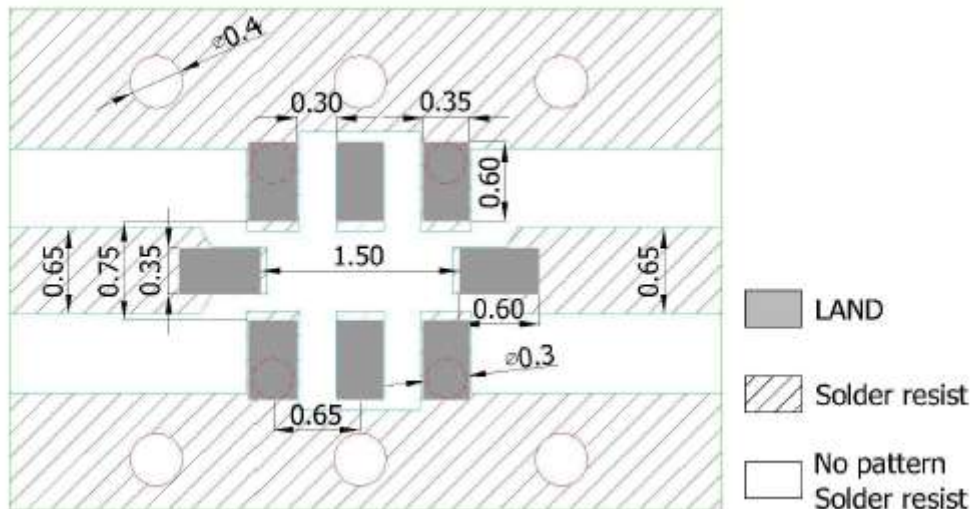
TOP VIEW



PIN CONNECTION

P1, P3, P5, P7	GND
P2, P6	NC
P4	OUTPUT
P8	INPUT

SOLDER PATTERN



Frequency Characteristics



APPROVAL

DRAWN BY	LP, October 16, 2016
APPROVED BY	CP, October 16, 2016
REVISION	A, Initial Release