



### Electrical specifications

**Center Frequency:** 2583 MHz  
**Bandwidth:** 75 MHz  
**Input / Output Impedance:** 50 Ohms  
**Insertion Loss (F0):** 2.2 dB  
**Ripple in BW:** 0.5 dB max  
**VSWR:** 1.5 : 1 dB max  
**Rejection:** 45dB min at 2442MHz  
**Rejection 2:** 45dB min at 2723MHz  
**Power Handling:** 2 watt max

### Mechanical

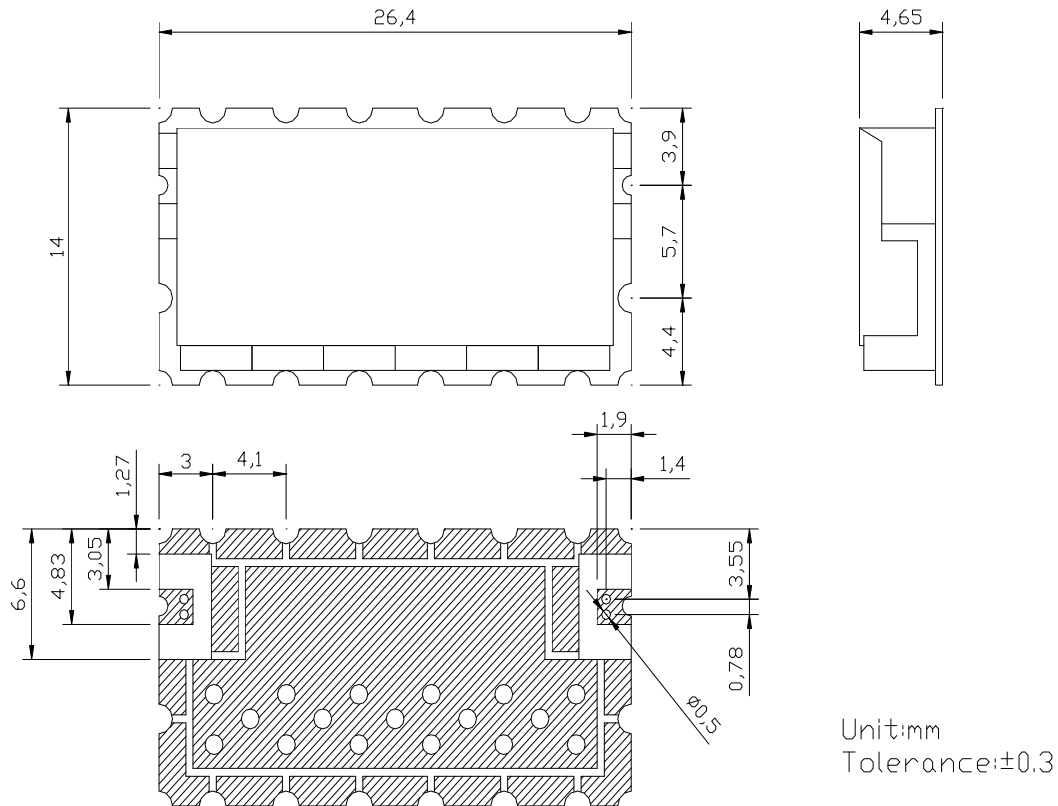
**Mounting Method:** SMT  
**Dimensions:** 26.4 x 14 x 4.65 mm

### Environmental

**Operating Temperature:** -30°C to 85°C  
**Storage Temperature:** -50°C to +90°C

This product is RoHs compliant.

### Outline Drawing:





**ANATECH ELECTRONICS INC**  
RF & Microwave Filters & Products

# 2583 MHz Ceramic Bandpass Filter

Part Number: AM2583B1507



## Response Plot:

