



### Electrical specifications

**Center Frequency:** 1840 MHz  
**Bandwidth:** 70 MHz  
**VSWR:** 1.7 : 1  
**Input / Output Impedance:** 50 Ohms  
**Passband:** 1805-1875 MHz  
**Passband Insertion Loss:** 2 dB max  
**Passband Ripple:** 1.0 dB max  
**Passband Return Loss:** >14 dB  
**Rejection:** 30 dBc min @ 1700 MHz  
**Rejection 2:** 30 dBc min @ 2050 MHz  
**Power Handling:** 1 W  
**Group delay variation:** 2 nsec

### Mechanical

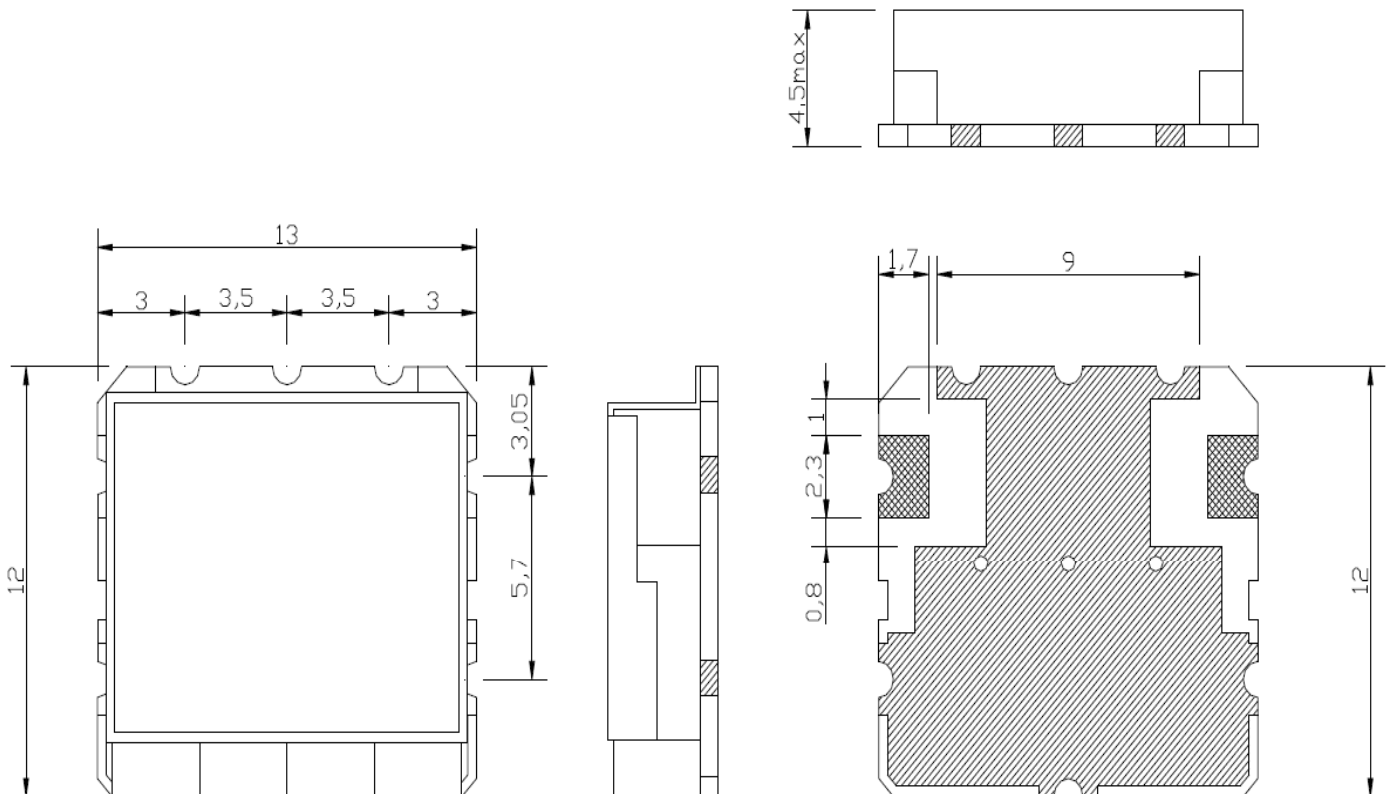
**Mounting Method:** SMT  
**Dimensions:** 13 x 12 x 4.5 mm

### Environmental

**Operating Temperature:** -30°C to +70°C  
**Storage Temperature:** -50°C to +90°C

**This product is RoHs compliant.**

### Outline Drawing:





**ANATECH ELECTRONICS INC**  
RF & Microwave Filters & Products

# 1840 MHz Ceramic Bandpass Filter

Part Number: AM1840B1027



## Response Plot:

