



**ANATECH ELECTRONICS INC**  
RF & Microwave Filters & Products

# 847 MHz Ceramic Bandpass Filter

Part Number: **AM847B1333**



## Electrical specifications

**Center Frequency:** 847 MHz  
**Bandwidth:** 30 MHz  
**VSWR:** 1.7 : 1 max  
**Input / Output Impedance:** 50 Ohms  
**Passband:** 832-862 MHz  
**Passband Insertion Loss:** 4.0 dB max  
**Passband Ripple:** 1.0 dB max  
**Rejection:** 25 dB min 791-821 MHz  
**Rejection 2:** 30 dB min 678-709 MHz  
**Rejection 3:** 50 dB min 524.8-554.8 MHz  
**Power Handling:** 2 W

## Mechanical

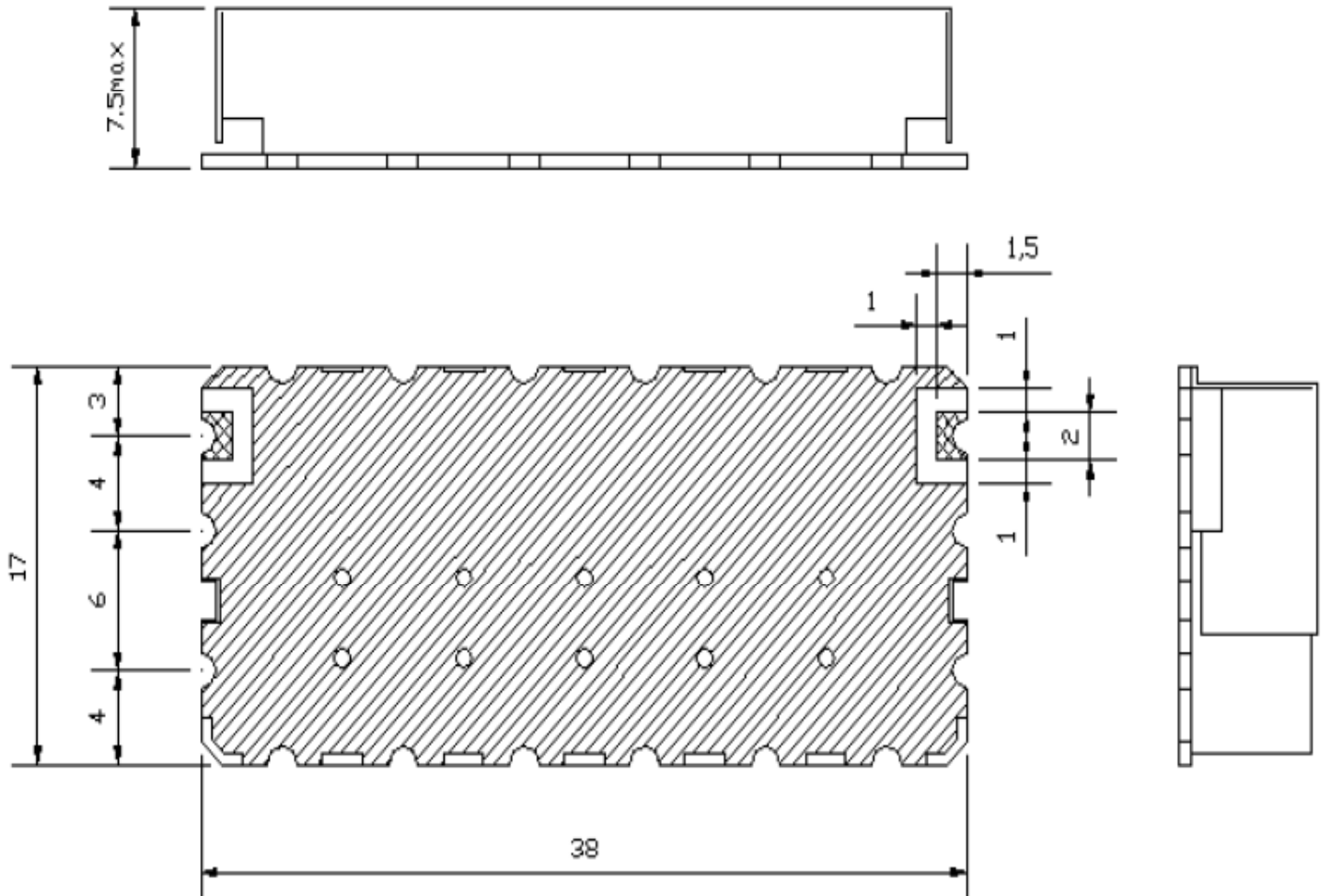
**Mounting Method:** SMT  
**Dimensions:** 38 x 17 x 7.5 mm

## Environmental

**Operating Temperature:** -20°C to 70°C  
**Storage Temperature:** -50°C to +90°C

This product is RoHS compliant.

## Outline Drawing:





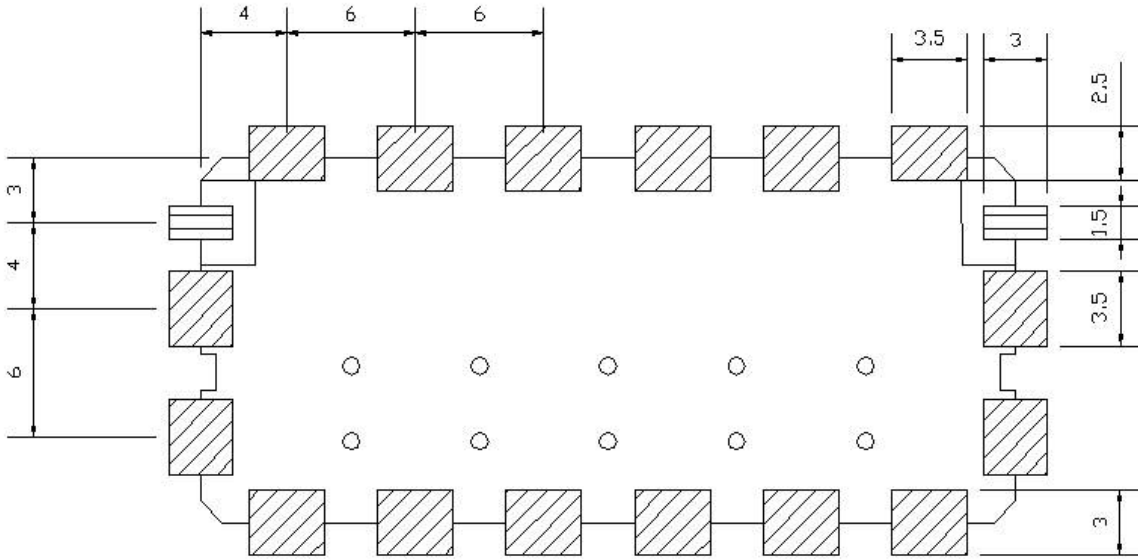
**ANATECH ELECTRONICS INC**  
RF & Microwave Filters & Products

# 847 MHz Ceramic Bandpass Filter

Part Number: **AM847B1333**



## Foot Print:



 IN/OUT PORT

Unit : mm

Tolerance :  $\pm 0.3$



**ANATECH ELECTRONICS INC**  
RF & Microwave Filters & Products

# 847 MHz Ceramic Bandpass Filter

Part Number: AM847B1333



## Response Plots:

