



CERAMIC

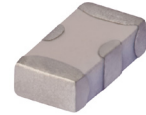
# Low Pass Filter

## LFCN-1500+

50Ω DC<sup>1</sup> to 1500 MHz

### FEATURES

- Excellent power handling, 10W
- Small size
- 7 sections
- Temperature stable
- LTCC construction
- Protected by U.S Patent 6,943,646



Generic photo used for illustration purposes only

CASE STYLE: FV1206

### APPLICATIONS

- Harmonic rejection
- VHF/UHF transmitters/receivers
- Lab use

**+RoHS Compliant**

The +Suffix identifies RoHS Compliance. See our web site for RoHS Compliance methodologies and qualifications

### ELECTRICAL SPECIFICATIONS<sup>1,2</sup> AT 25°C

| Parameter | F#             | Frequency (MHz) | Min.      | Typ. | Max. | Units |    |
|-----------|----------------|-----------------|-----------|------|------|-------|----|
| Passband  | Insertion Loss | DC-F1           | DC-1500   | —    | —    | 1.0   | dB |
|           | Freq. Cut-Off  | F2              | 1825      | —    | 3.0  | —     | dB |
|           | VSWR           | DC-F1           | DC-1500   | —    | 1.2  | —     | :1 |
| Stop Band | Rejection Loss | F3              | 2100      | 20   | —    | —     | dB |
|           |                | F4-F5           | 2150-6600 | —    | 30   | —     |    |
|           | VSWR           | F6              | 6800      | —    | 20   | —     | :1 |
|           |                | F3-F6           | 2100-6800 | —    | 20   | —     |    |

1. In Applications where DC isolation to ground is required, coupling capacitors are recommended to avoid DC leakage. Alternatively, if DC pass IN-OUT is required, Mini-Circuits' "D" suffix version of this model will support DC IN-OUT, and provide >100 MΩ isolation to ground.

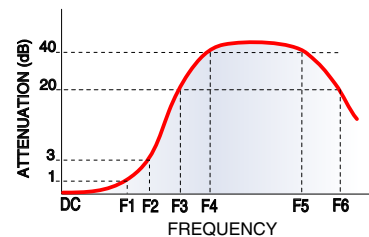
2. Measured on Mini-Circuits Characterization Test Board TB-270.

### MAXIMUM RATINGS

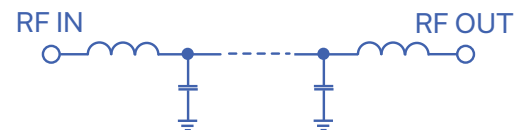
| Parameter                   | Ratings           |
|-----------------------------|-------------------|
| Operating temperature       | -55°C to 100°C    |
| Storage temperature         | -55°C to 100°C    |
| RF Power Input <sup>3</sup> | 10 W max. at 25°C |

3. Passband rating, derate linearly to 3.5W at 100°C ambient. Permanent damage may occur if any of these limits are exceeded.

### TYPICAL FREQUENCY RESPONSE



### FUNCTIONAL SCHEMATIC



REV. K  
ECO-011538  
LFCN-1500+  
AD/CP/AM  
220119





CERAMIC

# Low Pass Filter

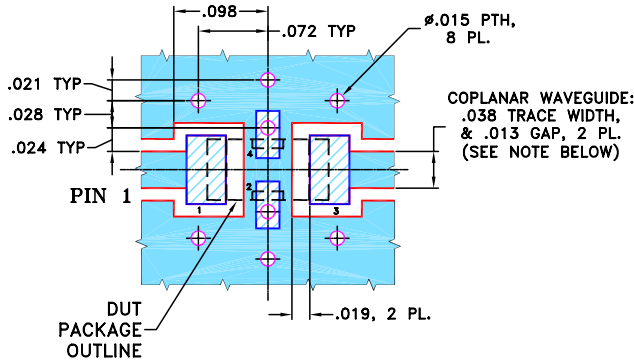
# LFCN-1500+

### PIN CONNECTIONS

|        |     |
|--------|-----|
| RF IN  | 1   |
| RF OUT | 3   |
| GROUND | 2,4 |

PRODUCT MARKING: N/A

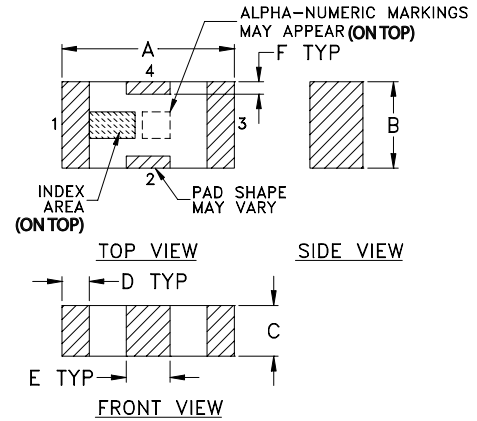
DEMO BOARD MCL P/N: TB-270  
SUGGESTED PCB LAYOUT (PL-137)



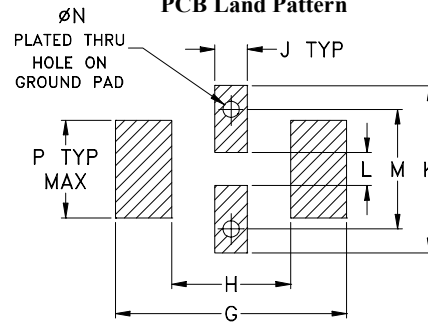
- NOTES:**
1. COPLANAR WAVEGUIDE PARAMETERS ARE SHOWN FOR ROGERS RO4350B WITH THICKNESS .020" ± .0015".  
COPPER: 1/2 OZ. EACH SIDE.  
FOR OTHER MATERIALS TRACE WIDTH & GAP MAY NEED TO BE MODIFIED.
  2. BOTTOM SIDE OF THE PCB IS CONTINUOUS GROUND PLANE.

- DENOTES PCB COPPER LAYOUT WITH SMOBC (SOLDER MASK OVER BARE COPPER)
- DENOTES COPPER LAND PATTERN FREE OF SOLDER MASK

### OUTLINE DRAWING



### PCB Land Pattern



Suggested Layout,  
Tolerance to be within ±.002

### OUTLINE DIMENSIONS (Inches mm)

| A    | B    | C    | D    | E    | F    | G    |
|------|------|------|------|------|------|------|
| .126 | .063 | .037 | .020 | .032 | .009 | .169 |
| 3.20 | 1.60 | 0.94 | 0.51 | 0.81 | 0.23 | 4.29 |

| H    | J    | K    | L    | M    | N    | P    | wt    |
|------|------|------|------|------|------|------|-------|
| .087 | .024 | .122 | .024 | .087 | .012 | .071 | grams |
| 2.21 | 0.61 | 3.10 | 0.61 | 2.21 | 0.30 | 1.80 | .020  |

TAPE & REEL INFORMATION: F71



CERAMIC

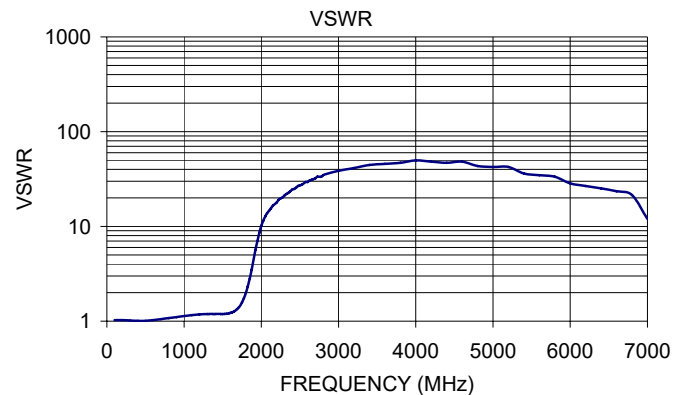
# Low Pass Filter

## LFCN-1500+

Mini-Circuits

### TYPICAL PERFORMANCE DATA AT 25°C

| Frequency (MHz) | Insertion Loss (dB) | VSWR (:1) |
|-----------------|---------------------|-----------|
| 100.00          | 0.09                | 1.03      |
| 1000.00         | 0.41                | 1.13      |
| 1500.00         | 0.77                | 1.19      |
| 1700.00         | 1.31                | 1.38      |
| 1825.00         | 2.99                | 2.33      |
| 2000.00         | 16.47               | 10.13     |
| 2100.00         | 34.49               | 14.62     |
| 2150.00         | 35.94               | 16.56     |
| 2500.00         | 37.94               | 27.16     |
| 3000.00         | 31.80               | 38.61     |
| 4000.00         | 42.25               | 49.64     |
| 5000.00         | 43.54               | 42.38     |
| 6000.00         | 36.93               | 28.49     |
| 6800.00         | 28.71               | 21.46     |
| 7000.00         | 16.97               | 12.01     |



#### NOTES

- A. Performance and quality attributes and conditions not expressly stated in this specification document are intended to be excluded and do not form a part of this specification document.
- B. Electrical specifications and performance data contained in this specification document are based on Mini-Circuit's applicable established test performance criteria and measurement instructions.
- C. The parts covered by this specification document are subject to Mini-Circuits standard limited warranty and terms and conditions (collectively, "Standard Terms"); Purchasers of this part are entitled to the rights and benefits contained therein. For a full statement of the standard. Terms and the exclusive rights and remedies thereunder, please visit Mini-Circuits' website at [www.minicircuits.com/MCLStore/terms.jsp](http://www.minicircuits.com/MCLStore/terms.jsp)

