

# Steward

Advanced Ferrite Materials, EMI Suppression, and Inductive Products

Home • Ferrite Product Lines • New Products • Technical • General • Contact • Steward Sales

## HFB259128-000

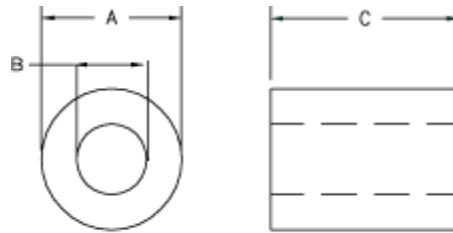


Figure #1

### Drawing Figure #

Figure Number
1

### Electrical Characteristics

NET Z @ 300 MHz	NET Z @ 500 MHz	NET Z @ 800 MHz	NET Z @ 1 GHz
170	224	242	244

### Physical Dimensions

A mm	B mm	C mm
25.91	12.83	20.00

Specifications, which provide more details for the correct use of the described products, are available upon request. All specifications are subject to change without notice. For more information on any of the products listed above, please contact Steward customer service department at (800) 634-2673.

[americas@steward.com](mailto:americas@steward.com)      [mexico@steward.com](mailto:mexico@steward.com)      [europa@steward.com](mailto:europa@steward.com)      [asia@steward.com](mailto:asia@steward.com)

Copyright© 2004 Steward, Inc.

Last Updated: 3/8/2004