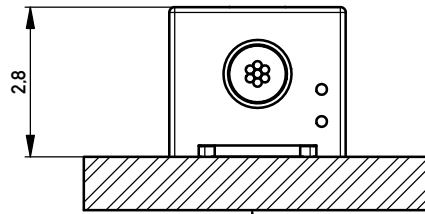
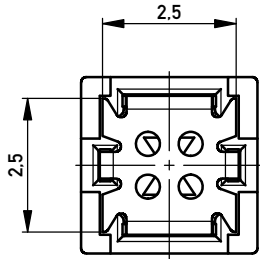
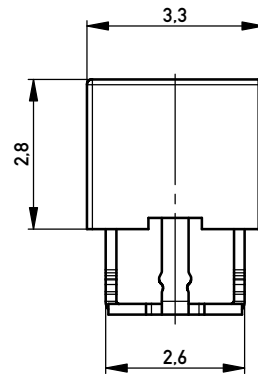
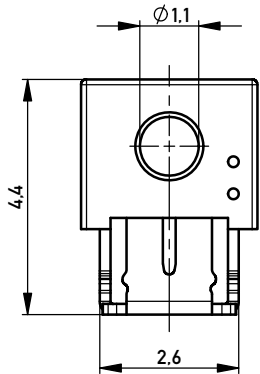
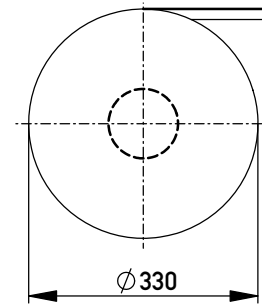


Terminal verpresst
Terminal pressed

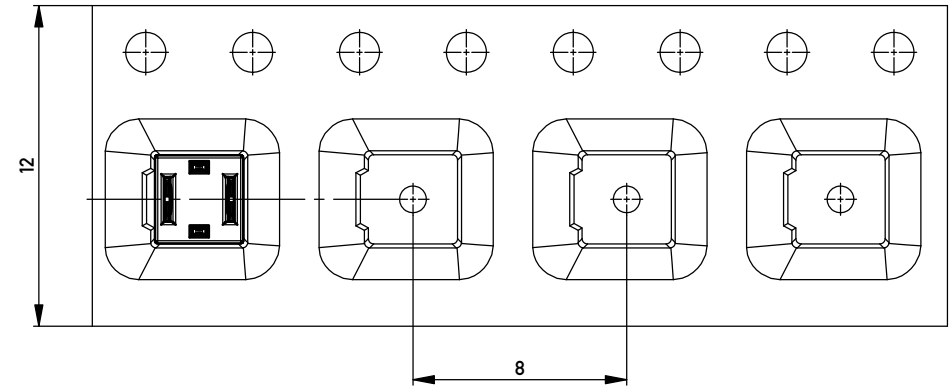
Verpackt im Gurt nach DIN IEC 60286-3
Tape on Reel Packaging according to DIN IEC 60286-3
Verpackungseinheit: 2000 Stück
Packaging unit: 2000 pcs



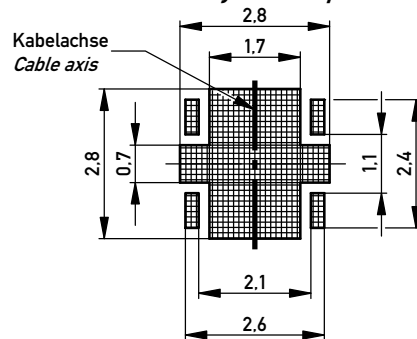
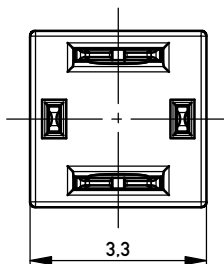
Leiterplatte
PCB



Abspulrichtung - Reel off Direction



Leiterplatten-Layout Vorschlag
PCB-Layout Proposal



*AWG 24/7 - 26/7 D 1,1 ohne Kabelanschlag
*AWG 24/7 - 26/7 D 1,1 without cable stop

Information: Farbe: schwarz color: black	Tolerances	 All Dimensions in mm	Scale	10:1
	All rights reserved. Only for Information. To ensure that this is the latest version of this drawing, please contact one of the ERNI companies before using.		Designation Schneidklemmterminal * <i>IDC-Terminal*</i>	
Subject to modification without prior notice. Drawing will not be updated.		www.ERNI.com	474337	
a	19.03.2015		Class IDC-TERM	
Index	Date	I A3		

Copyright by ERNI GmbH.
 Proprietary notice pursuant to ISO 9006 to be observed.