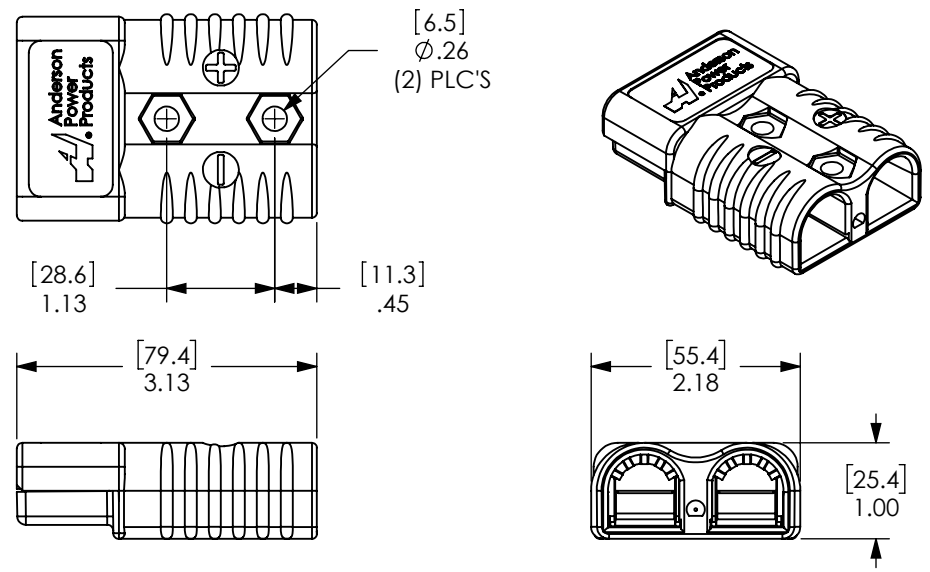


THE INFORMATION CONTAINED IN THIS DRAWING IS THE SOLE PROPERTY OF ANDERSON POWER PRODUCTS. ANY REPRODUCTION IN PART OR WHOLE WITHOUT THE WRITTEN PERMISSION OF ANDERSON POWER PRODUCTS IS PROHIBITED.

Copyright 2016

ANDERSON POWER PRODUCTS RESERVES THE RIGHT TO ALTER PRODUCT TYPES, THEIR TECHNICAL DATA, DIMENSION, STYLE AND ACCESSORIES WITHOUT PRIOR NOTIFICATION.



COLOR	P/N SEE NOTE 6	MATERIAL
GRAY	940	PC
	P940	PC/PBT
BLUE	941	PC
	P941	PC/PBT
ORANGE	942	PC
	P942	PC/PBT
YELLOW	943	PC
	P943	PC/PBT
RED	949	PC
	P949	PC/PBT
**BLACK "KEYLESS"	2-7252G11	PC
	P2-7252G11	PC/PBT
BROWN	950	PC
	P950	PC/PBT

- NOTES:
1. SPRING/HOUSING ASSEMBLIES ARE UL RECOGNIZED PER FILE E26226, CSA CERTIFIED PER LR25154
 2. HOUSINGS ARE KEYPED TO ONLY ALLOW MATING WITH THE SAME COLOR HOUSING.
 3. FOR ASSEMBLY INSTRUCTIONS SEE DOCUMENT 1S1030A
 4. HOUSING ASSEMBLIES ACCOMODATE ANDERSON CONTACTS FOR WIRE RANGE FROM #10 AWG TO 1/0.
 5. **BLACK "KEYLESS" CONNECTOR WILL MATE WITH ALL VOLTAGE KEYS AND COLORS
 6. "P" PREFIX AND LOGO INDICATE CHEMICAL RESISTANT HOUSINGS. "P" LOGO PRESENT ON CHEMICAL RESISTANT HOUSINGS ONLY.
 7. MANUFACTURING AND AGENCY MARKINGS SHOWN ON THIS SURFACE. [7]

MATED PAIR

REV.	DESCRIPTION	APPRV	DATE
7	ECN 2016-0112 - CHANGED NOTE 7, ADDED REF. TO DIM.	CPD	12/9/2016
6	ECN 2016-0085	CPD	10/20/2016
5	ECRN-15512 UPDATE DRAWING	TWE	11/14/2013
4	ECRN 15246 ADDED NOTE 6	NTS	10/1/2012
3	ECRN 14661: "PC/PBT" WAS "PBT"	CMS	7/7/10
2	ECRN 14391- REDRAW UPDATE BORDER ADD TABLE	AMS	3/3/09

DIMENSIONS ARE IN:	INCH [MM]	APPROVALS		 ANDERSON POWER PRODUCTS
UNLESS OTHERWISE STATED		DRAWN	CMS 3/18/1999	
TOLERANCES:		CHECKED	DJD 3/19/1999	
DECIMALS (INCH) DECIMALS (MM) ANGLES		PM APPR	CHB 4/19/1999	
SURFACE FINISH:		QC APPR	DJM 4/20/1999	TITLE 175A DUAL POLE SPRING & HOUSING
MACHINED 128µin [3.2µ] ✓ MOLDED 64µin [1.6µ] ✓		ENG APPR	UFN 4/20/1999	
MATERIAL:SPRINGS - STAINLESS STEEL HOUSINGS - SEE TABLE		FINISH:		SIZE A DWG NO. 114131S1 REV. 7
 3rd ANGLE PROJECTION		-CAD GENERATED DRAWING- DO NOT MANUALLY UPDATE DO NOT SCALE		SCALE NONE CADFILE 01001 SHEET 1 OF 2

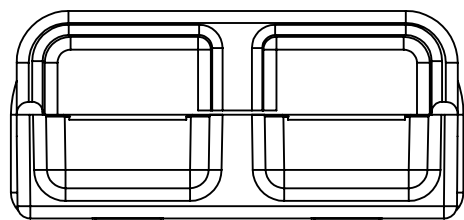
THE INFORMATION CONTAINED IN THIS DRAWING IS THE SOLE PROPERTY OF ANDERSON POWER PRODUCTS. ANY REPRODUCTION IN PART OR WHOLE WITHOUT THE WRITTEN PERMISSION OF ANDERSON POWER PRODUCTS IS PROHIBITED.

Copyright 2016

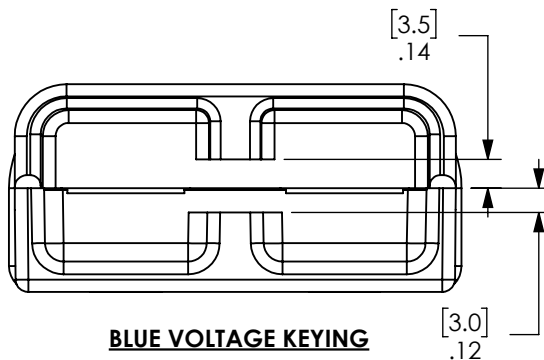
ANDERSON POWER PRODUCTS RESERVES THE RIGHT TO ALTER PRODUCT TYPES, THEIR TECHNICAL DATA, DIMENSION, STYLE AND ACCESSORIES WITHOUT PRIOR NOTIFICATION.

D
C
B
A

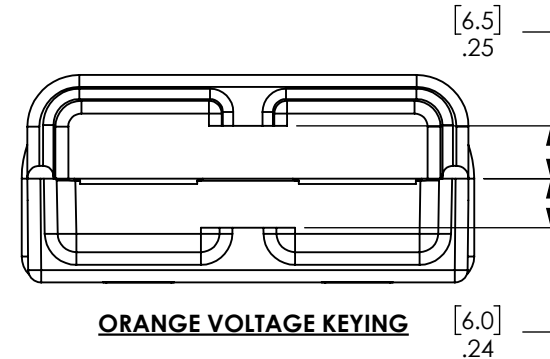
D
C
B
A



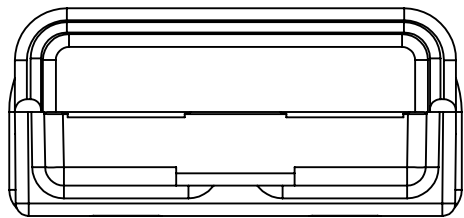
GRAY VOLTAGE KEYING



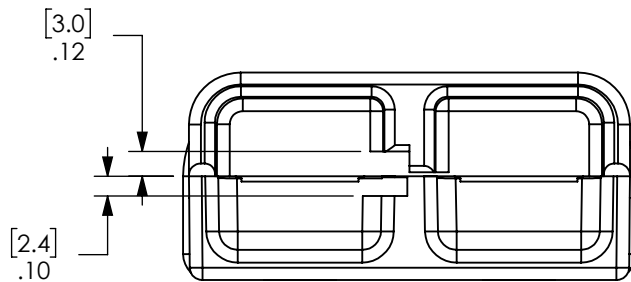
BLUE VOLTAGE KEYING



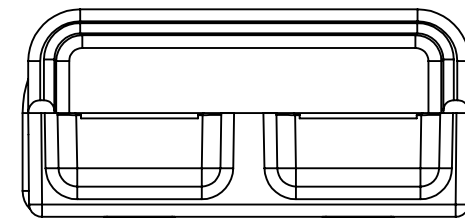
ORANGE VOLTAGE KEYING



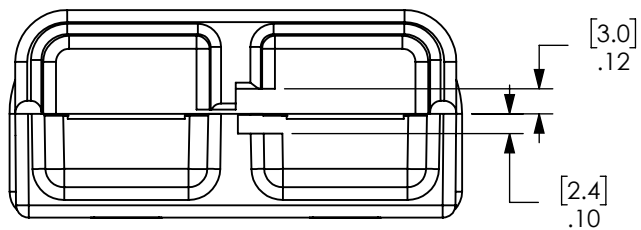
YELLOW VOLTAGE KEYING



RED VOLTAGE KEYING



BLACK "KEYLESS" VOLTAGE KEYING



BROWN VOLTAGE KEYING

DIMENSIONS ARE IN:	INCH [MM]
UNLESS OTHERWISE STATED	
TOLERANCES:	
DECIMALS (INCH)	DECIMALS (MM) ANGLES
.XX ± .02	.X ± .5 ± 2°
SURFACE FINISH:	
MACHINED	128µin [3.2µ]
MOLDED	64µin [1.6µ]
MATERIAL: SPRINGS - STAINLESS STEEL	
HOUSINGS - SEE TABLE	
FINISH:	

APPROVALS	
DRAWN	CMS 3/18/1999
CHECKED	DJD 3/19/1999
PM APPRV	CHB 4/19/1999
QC APPRV	DJM 4/20/1999
ENG APPRV	UFN 4/20/1999

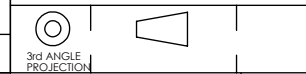
ANDERSON POWER PRODUCTS

TITLE: 175A DUAL POLE SPRING & HOUSING

SIZE: A DWG NO. 114131S1 REV. 7

-	See Sheet1	-	-
REV.	DESCRIPTION	APPRV	DATE

REVISIONS



-CAD GENERATED DRAWING-
DO NOT MANUALLY UPDATE
DO NOT SCALE

SCALE	CADFILE	SHEET
NONE	01001	2 OF 2