

# Ethernet RJ45 Male Plug Terminal Block

Product ID: 2913

## Description

If you need to connect an RJ45 cable (a.k.a Ethernet) to a board that with an Ethernet Jack – this adapter will come in very handy! No soldering required. Just use a slim screwdriver to open up the terminal blocks, slide in your stranded or solid-core wire and re-tighten. Note that these aren't recommended for actual Ethernet traffic, especially long term...but for basic power/data distribution, RJ45's are great!

This is the Ethernet (RJ45) Male Plug Terminal Block. There is a standard RJ45 Ethernet plug on one end, and a screw terminal block on the other.

Please note these are wired using the '468b' connection scheme: RJ45 1-2-3-4-5-6-7-8 connects to Screws 3-4-5-2-1-6-7-8

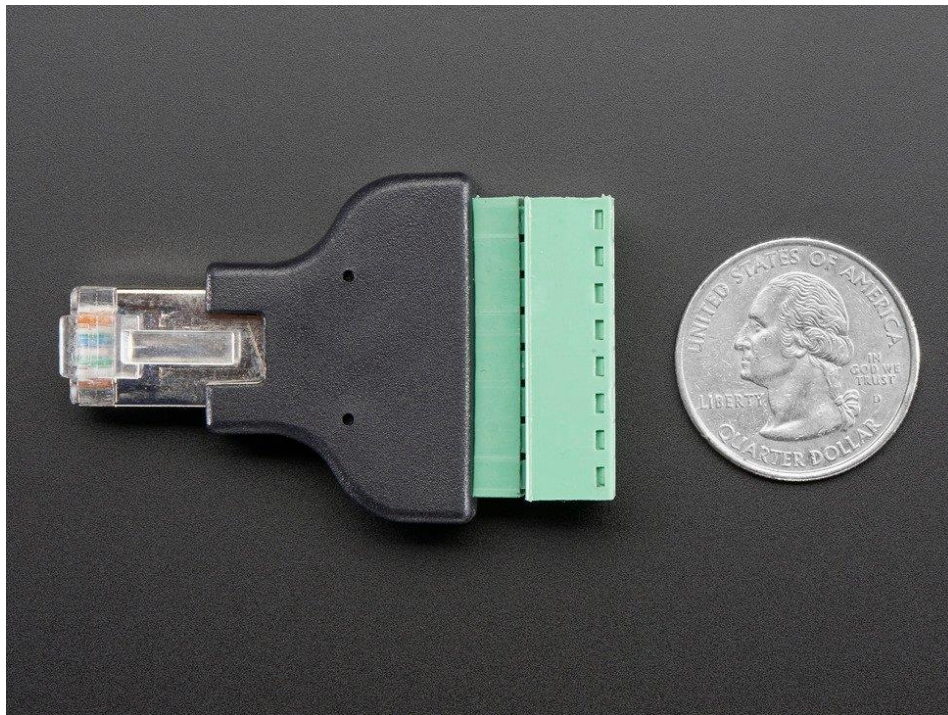
We also have a (matching) Ethernet Female Jack Terminal Block.

New Products video link

<https://youtu.be/3HfHwCfVjLo>

## Technical Details

- Length (end to end): 53.9mm / 2.12"
- Weight: 17.7g
- Terminal pitch: 5mm
- Wire gauge: 26-16AWG



<https://www.adafruit.com/product/2913/11-23-21>