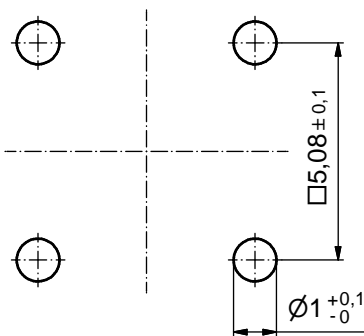


| ⑥                                      |            |
|--|------------|
| PLATING ITEM 1                         | PART-NO.   |
| GOLD FLASH over NICKEL                 | 124A10019X |
| 30µin HARD GOLD over min. 50µin NICKEL | 124C10019X |

⑥ NOTES:

1. MATERIAL: COPPER ALLOY
2. PLATING:
  - ITEM 1: SEE TABLE
  - ITEM 2: GOLD FLASH over NICKEL
  - ITEM 3: GOLD FLASH over NICKEL
  - ITEM 4: NICKEL PLATED

P.C.B. HOLE DRILLINGS ⑥



Directive 2002/95/EC RoHS compliant

|   |  |             |  |                 |  |   |                     |                    |
|---|--|-------------|--|-----------------|--|---|---------------------|--------------------|
| THIS DRAWING MAY NOT BE COPIED OR REPRODUCED IN ANY WAY, AND MAY NOT BE PASSED ON TO A THIRD PARTY WITHOUT WRITTEN PERMISSION. OWNERSHIP AND COPYRIGHT OF CONEC GmbH DO NOT ALTER CAD DRAWING BY HAND |  |             |  | tolerance       |  | dim. in mm  | scale: 10:1         |                    |
|   |  |             |  | date            |  |   | material: SEE NOTES |                    |
| drawn   |  | 08.01.01    |  | E. Mickenbecker |  | title:<br><b>HIGH POWER CONTACT FEMALE</b><br>SOLDER PIN 90°<br>for DIN EN 60603 TYPE "M" |                     |                    |
| appd.   |  | 08.01.01    |  | J.Parei         |  |   |                     |                    |
| norm  |  |             |  |                 |  |   |                     |                    |
| d-old   |  |             |  |                 |  | dwg no:   |                     | DIN-A3             |
| 5 x b   |  | Ä4578       |  | 12.12.2012      |  | Lehm.   |                     | sh: 1              |
| a   |  | Original    |  |                 |  | 12K1A031A   |                     |                    |
| rev.  |  | description |  | date            |  | name  |                     | part no: SEE TABLE |
|   |  |             |  |                 |  |   |                     |                    |
|   |  |             |  |                 |  |   |                     |                    |