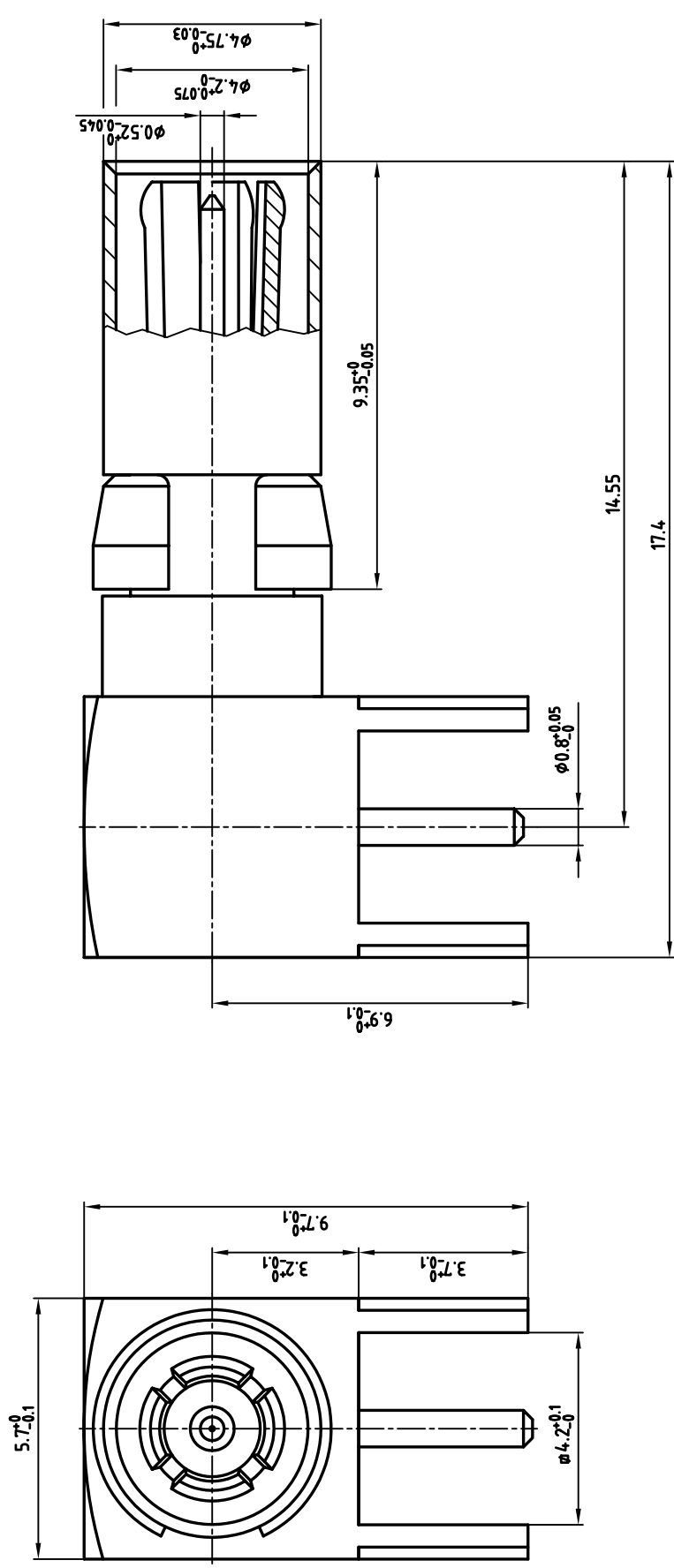


used for: DIN EN 60603 TYPE "M"



Directive 2002/95/EC  
RoHS  
Compliant

scale: 10:1 material:		title: COAXIAL CONTACT PLUG 50 Ohm Solder termination 90° (35) with 5 pins DIN EN 60603 TYPE "M"	
tolerance dim. in mm		dwg no: 12K2A085A AutoCAD 2004 DIN-A 3 sh: 1/1	
name date 2005		name date 2005	
drawn 27.06.		Lehmkuhler 27.06.	
appd. norm		Kühle	
e-old		e-old	
rev. description date name		rev. description date name	
THIS DRAWING MAY NOT BE COPIED OR REPRODUCED IN ANY WAY, AND MAY NOT BE PASSED ON TO A THIRD PARTY WITHOUT WRITTEN PERMISSION. OWNERSHIP AND COPYRIGHT OF CONEC GMBH DO NOT ALTER CAD DRAWING BY HAND			
APPROVAL # FREIGABE # DEBLOCAGE # AUTORIZACION # APPROVAL CUSTOMER APPROVAL DATE:		APPROVAL # FREIGABE # DEBLOCAGE # AUTORIZACION # APPROVAL TITLE:	
NAME:		COMPANY NAME:	
APPROVAL # FREIGABE # DEBLOCAGE # AUTORIZACION # APPROVAL			



part no: 123C25029X