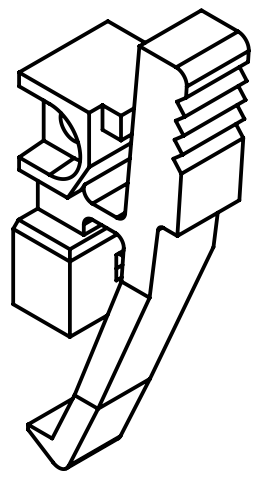
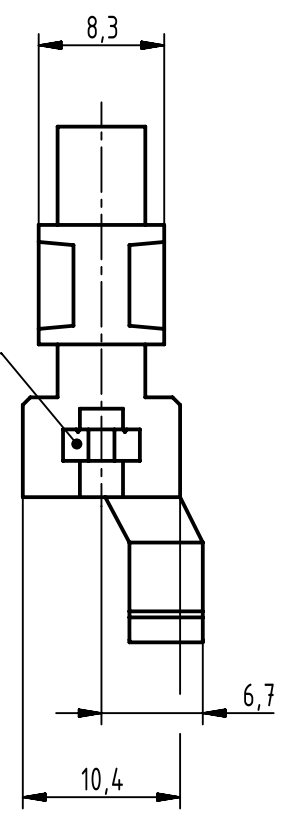



suitable for hexagon nut  
M2,5 DIN EN ISO 4032



	All rights reserved Department EC PD - DE	All Dimensions in mm Original Size DIN A4		Scale 2:1	Free size tol.	Ref. Sub. 09 06 000 9911 / Mod. 34335 / 10.05.2007	
		Created by TADJE	Inspected by ELLERMANN	Standardisation HOFFMANN	Date 2013-12-04	State Final Release	
HARTING Electronics GmbH D-32339 Espelkamp		Title DIN Signal locking lever for type F, H, MH				Doc-Key / ECM-Nr. 100084369/UGD/002/B 500000069253	
		Type TB	Number 09060009911		Rev. B	Page 1/1	